



OCTOBER 2012

EXECUTIVE DIRECTOR'S REPORT

Director's Message

EVERY TIME ALAMEDA CTC AWARDS a contract, it means job opportunities for local residents and businesses. Since 2000, we've awarded \$495 million in contracts to Alameda County businesses to help deliver our transportation projects and programs. Many of these projects are underway this fall in infrastructure improvements totalling over \$2.5 billion. Learn more about the following four featured projects and other new construction in "Project Updates":

- [BART Warm Springs Extension](#)
- [I-80 Integrated Corridor Mobility](#)
- [I-880/Mission Boulevard \(Route 262\) Interchange](#)
- [Route 84 Expressway – North Segment](#)

Extensive outreach on the [2012 Transportation Expenditure Plan](#), known as Measure B1 on the ballot, continues throughout Alameda County, to business, civic, environmental and social justice organizations, ethnic communities, labor and other interested groups. If Measure B1 passes [Director's Message cont'd on page 2](#)

TABLE OF CONTENTS

- 1 **Transportation Planning Updates**
Countywide Bicycle and Pedestrian Plans
Policy Updates
OBAG moves ahead
- 2 **Project Updates**
Creating jobs in Alameda County
- 3 **Finance Updates**
New study shows measurable savings
Programming Updates
Program compliance
Other News
International Walk & Roll to School Day
- 4 **Committee Activities**
Highlights of October advisory committees
Outreach and Events
October activities

Transportation Planning Updates

Countywide Bicycle and Pedestrian Plans considered for adoption

After more than two years of planning and 35 public meetings, the Alameda CTC Commission will consider adopting the first update to the Countywide Pedestrian Plan and the second update to the Countywide Bicycle Plan at its October 2012 meeting. Alameda CTC incorporated the input of over 65 individuals and six public meetings into the draft plans, which it released in June 2012; Alameda CTC released the Final Draft Plans in late September.

Together, the Final Draft Plans lay out the vision and steps for making Alameda County a safe and convenient place for walking and bicycling over the next 28 years. The vision is to make Alameda County a community that inspires people of all ages and abilities to walk and bike for everyday transportation, recreation and health.

The plans describe the existing walking and bicycling conditions in the county, the priorities for countywide bike and pedestrian funding for both capital projects and programs, the total costs to implement the priorities, total expected revenue and next steps for implementing the plans. The combined total cost to implement both plans is \$2.7 billion, and the combined anticipated revenue is \$820 million, of which over half would come from Measure B1.

For more information, see the [Bicycle and Pedestrian Plans web page](#).

Policy Updates

OBAG moves ahead

Alameda County's implementation of the OneBayArea Grant Program is moving forward. The Alameda CTC Commission received policy recommendations for program implementation in September and draft program guidelines and PDA Investment and Growth Strategy criteria for review and approval in October 2012. Alameda CTC recommends programming the approximately \$63 million in federal OBAG funds available for Alameda County in the following categories: Planning/Programming Support, Local Streets and Roads, Priority Development Area Supportive Transportation Investments and [Safe Routes to School](#).

Visit the [OBAG Program web page](#) for more information including the [outreach schedule](#) and [fact sheet](#).

Alameda CTC is also requesting Commission adoption of [Complete Streets](#) policy elements and a Complete Streets sample resolution and staff report for local jurisdictions.

In the coming months, a funding policy to strategically integrate local, state and federal funding sources to support the county's funding needs and a procurement policy that will guide all Alameda CTC contracting efforts will be brought before the Commission for consideration.



Director's Message cont'd

in November, it will secure \$7.8 billion for critical transportation investments throughout Alameda County, including infrastructure improvements and public and specialized transit operations.

After more than two years of planning and 35 public meetings, the Commission will consider adopting the updated [Countywide Pedestrian Plan](#) and [Countywide Bicycle Plan](#) in October 2012. These plans lay out the vision for making Alameda County a safe and convenient place for walking and bicycling (read more in "Transportation Planning Updates"). Alameda CTC has already funded over \$8.8 million in [Measure B Bicycle and Pedestrian Grant Projects](#) (see "Programming Updates"), and over \$34.2 million to cities and the county for local bicycle and pedestrian investments.

Alameda County's implementation of the [OneBayArea Grant \(OBAG\) Program](#) is moving ahead. We have educated our community and technical advisory committees about the program, developed program guidelines and a [fact sheet](#) (available in [Chinese](#) and [Spanish](#)) and widely distributed program information. See "Policy News" and the [outreach schedule](#) for more information.

A recent study shows measurable cost savings from the new benefits program that Alameda CTC implemented early 2012. Accounting staff has been working with auditors to produce several financial statements, and the agency anticipates [releasing five RFPs](#) in the near future (see "Finance Updates" for more information).

I am pleased to welcome two new staff members who have joined the Alameda CTC team: Kara Vuicich, senior transportation planner, and Yoana Navarro, senior accountant.

I look forward to seeing you at upcoming activities and events (see page 4 for details).

Sincerely,

ARTHUR L. DAO
Executive Director, Alameda CTC

Project Updates

Creating jobs in Alameda County

With the majority of capital project costs occurring during construction, each and every construction contract that Alameda CTC and its partners award with Measure B funds means more work opportunities for local residents and businesses. Since 2000, Alameda CTC has funded \$495 million in contracts for Alameda County businesses.

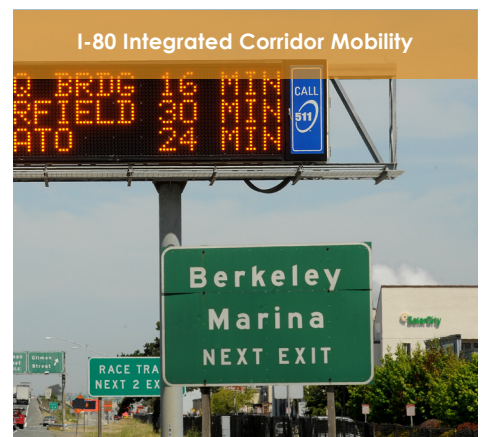
This fall, over \$2.5 billion in construction value is underway as a result of the local sales tax measure, state bond funds and other leveraged sources. This results in significant transportation mobility investment — many through innovative technologies — which will expand traveler choices, reduce congestion and improve mobility. As important, these projects are creating jobs in Alameda County for construction materials, trucking/hauling and all services that support construction projects.

Key projects under construction that are providing jobs throughout the county:

- [Lewelling/East Lewelling Blvd. Widening](#)
(estimated fall 2012 completion)
- [BART Oakland Airport Connector](#)
(estimated spring 2014 completion)
- [I-580 Westbound HOV Lane Project](#)
(estimated fall 2014 completion)
- [Route 84 Expressway – North Segment](#)
(estimated winter 2014 completion)
- [BART Warm Springs Extension](#)
(estimated fall 2015 completion)
- [I-880/Mission Boulevard \(Route 262\) Interchange](#)
(estimated winter 2015 completion)
- [I-80 Integrated Corridor Mobility](#)
(estimated spring 2015 completion)
- [I-880 Southbound HOV Lane Project](#)
(estimated winter 2016 completion)



Reducing congestion and increasing capacity of existing freeway



Forward-thinking solutions to reduce congestion and increase efficiency



Expanding transportation choices and environmental sustainability

Finance Updates

New benefits study shows measurable savings

Last month, finance staff worked to finalize the fiscal year 2011-2012 financial data and engaged in various audit processes for four financial audits. Independent auditors have been finalizing their field work for the ACCMA and ACTIA through the final termination date of February 29, 2012 and for the Sunol Smart Carpool Lane Joint Powers Authority and the Alameda CTC through June 30, 2012. Auditors and staff are currently drafting four sets of financial statements for presentation at the November Finance and Administration Committee meeting and at the December Commission meeting.

Staff also has worked with an actuary to provide detailed data to complete an updated Other Post Employment Benefits study for Alameda CTC as of June 30, 2012. In comparison to the prior year's individual studies completed for ACCMA and ACTIA, the new study shows a measurable savings due to the new benefits program that

Alameda CTC implemented in January and February of 2012.

In August 2012, Alameda CTC awarded contracts for two projects worth approximately \$307,000 — the Overall Evaluation of the I-680 Express Lane Project and the Operations Services for the Guaranteed Ride Home Program.



Alameda CTC also received proposals and held interviews for the top-ranked firms to provide Project Management/Project Controls Services, and anticipates releasing five additional RFPs for various services in fall 2012. For more information, visit www.alamedactc.org/news_items/index/2.

Programming Updates

Annual Compliance Workshop for Measure B recipients

Annual Compliance Workshop

On September 20, 2012, Alameda CTC held its annual Compliance Workshop for jurisdictions that receive Measure B and Vehicle Registration Fee (VRF) pass-through funding. At the workshop, jurisdictions received the latest reporting requirements and guidance for disclosing the past fiscal year's revenues and expenditure activities. The cities of Albany, Berkeley, Emeryville, Fremont, Hayward, Livermore, Newark, Oakland, Pleasanton and San Leandro were in attendance. AC Transit, Alameda County Public Works Authority, BART, Livermore Amador Valley Transportation Authority and San Joaquin Regional Rail Commission were also in attendance.

All Measure B and VRF fund recipients, including transit agencies and local jurisdictions were required to attend the workshop. The [new audit instructions and compliance report forms](#) for reporting on Measure B and Vehicle Registration Fee (VRF) fund revenues and expenditures are available on Alameda CTC's website. The audit and compliance reports are due to Alameda CTC at the end of December 2012.

Over \$8.8 million in Measure B grant program funds to date

To date, Alameda CTC's grant program has funded 41 capital projects, programs and

Programming Updates cont'd on page 4

Other News

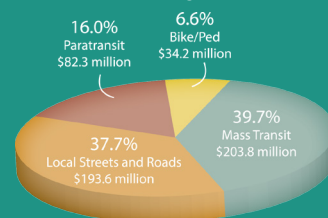
International Walk and Roll to School Day: Close to 60,000 students from 99 elementary, middle and high schools in Alameda County walked, biked, scooted, carpoled and rode transit to school along with parents, teachers and community leaders on [International Walk and Roll to School Day](#) sponsored by Alameda CTC on Wednesday, October 3, 2012. See the [list of participating schools](#) and [Safe Routes to Schools website](#).



Transportation Investments

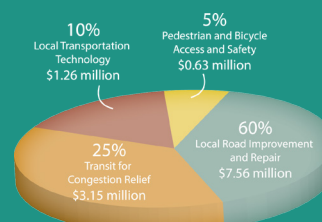
Measure B Program Distributions Since 2000

Alameda CTC distributed \$60.6 million in fiscal year 2011-2012 and has distributed over \$574.5 million in Measure B pass-through funds since 2000.



Vehicle Registration Fee Distributions Since 2012

Alameda CTC has distributed over \$12.6 million in VRF pass-through funds through July 31, 2012.



Total Measure B-funded Contracts

Alameda CTC has funded \$495 million in contracts for Alameda County businesses since 2000.

Outreach and Events

Alameda CTC is hosting or participating in the following events during October:

- October 2 – Montclair Lions Club in Oakland
- October 3 – International Walk & Roll to School Day at 99 Schools in Alameda County; 2012 Bay Area Black Expo in Oakland
- October 4 – St. Regis Retirement Center Annual Senior Health Fair in Hayward; Sons in Retirement Monthly Luncheon in San Ramon
- October 5 – First Fridays in Oakland; KONO CulturalFest in Oakland's Koreatown
- October 6 – Oktoberfest in the Oakland Diamond District; Dublin Senior Informational Fair
- October 10 – Pleasanton 2015 Forum; Youth Uprising in Oakland; and 4th Annual Hayward Chamber of Commerce Business Expo
- October 11 – Rotary Club of Pleasanton North
- October 14 – Sunday Streets in Berkeley
- October 17 – Bay Area Health in Transportation Webinar; Association of Pedestrian and Bicycle Professionals Webinar at Alameda CTC; FHWA Experimentation for Advancing Best Practices
- October 19 – I-80 Integrated Corridor Mobility groundbreaking in Emeryville
- October 20 – Alameda County Wheels for Meals Ride
- October 23 – Newark Senior Center Senior Health Fair
- October 25 – North County Transportation Forum at Alameda CTC offices
- October 26 – BART Warm Springs Extension ribbon-cutting in Fremont
- October 27 – Alamo Canal Trail Undercrossing ribbon-cutting in Dublin
- October 28 – Dia de los Muertos in Oakland
- October 31 – Lewelling Avenue Widening Project ribbon-cutting in San Lorenzo

Also, every Wednesday during the month of October, Alameda CTC participates in the City Center Fall Concert series by providing information about transportation programs and projects.

Committee Activities

Highlights of September advisory committees

In October, several advisory committees met. Highlights include:

- October 2 – The Alameda County Technical Advisory Committee unanimously approved the final Complete Streets elements for local jurisdictions to include in their local Complete Streets policies and provided feedback on OneBayArea Grant Program Priority Development Area selection and funding criteria. The committee also approved its fiscal year 2012-2013 (FY 12-13) bylaws.



- October 4 – The Bicycle and Pedestrian Advisory Committee approved the final Countywide Pedestrian and Bicycle Plans and provided input on the Complete Streets elements.
- October 9 – The Paratransit Technical Advisory Committee discussed use of existing and potential new funding, and exchanged technical information.
- October 22 – The Paratransit Advisory and Planning Committee (PAPCO) recommended the Commission approve the PAPCO Bylaws, and evaluated the performance of the Paratransit Coordination Team. At the Joint PAPCO/TAC meeting, members discussed coordination and mobility management and funding policies.
- October 25 – The Citizens Advisory Committee discussed its FY 12-13 outreach goals and objectives, reviewed Alameda CTC's FY 12-13 Strategic Communications Plan and hosted the North County Transportation Forum.

Programming Updates cont'd from page 3

master plans, totaling over \$8.8 million, over four grant cycles. This past month, the City of Berkeley completed one such project, the Aquatic Park Connection Streetscape Improvement Project. This \$1.2 million project relied on \$65,000 in Measure B funds to install electronic bicycle lockers at the Berkeley Amtrak station, as well as design, fabricate and install 12 wayfinding signs, banners and maps to direct pedestrians and bicyclists between the Fourth Street retail area, Amtrak, the Aquatic Park and the bicycle/pedestrian overcrossing over Interstate 80.

Aquatic Park Connection Streetscape Improvement Project

