



A STUDENT'S GUIDE TO RIDING THE BUS

Hi, I'm **Monarch the Bear** —

Follow me as I share some helpful tips on how to ride the bus in Union City!

Your student transit pass gives you access to many bus routes — just think of all the places you can visit!



Your transit pass gives you unlimited trips any day of the week on **over 100 AC Transit and Union City Transit Routes.**



Before we hop on — whether you are new or used to riding the bus — let's review the essentials of riding public transportation.

Where transit goes, you can go, too!

For a complete map of the AC Transit system, visit www.actransit.org.

For a complete map of the Union City system, visit www.unioncity.org.

Bus basics:

how to ride the bus

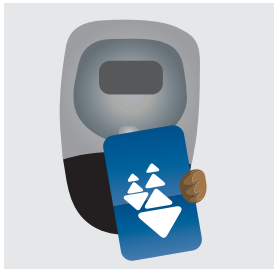
If you have never taken the bus, review these five easy steps before you take your first trip.



1. **PLAN AHEAD.** Decide which bus route will take you to your destination. *See back cover for more information.*



2. **ARRIVE EARLY.** Get to your bus stop 5 minutes before the bus is scheduled to arrive. Make sure that you are at the right bus stop, that you are traveling in the right direction, and that your bus route's number is also on the bus stop sign.



- 3. BOARD AND PAY.** Wait for the bus to stop, board at the front door and either tag your Clipper Card on the card reader or show the bus driver the sticker on the front of your student ID card. Take a seat or find a place to stand—and hold on!



- 4. REQUEST STOP.** Ready to get off? About a block before the bus arrives at your stop, signal the bus driver that you want to get off. Either press the stop button or pull the cord that runs along the window.

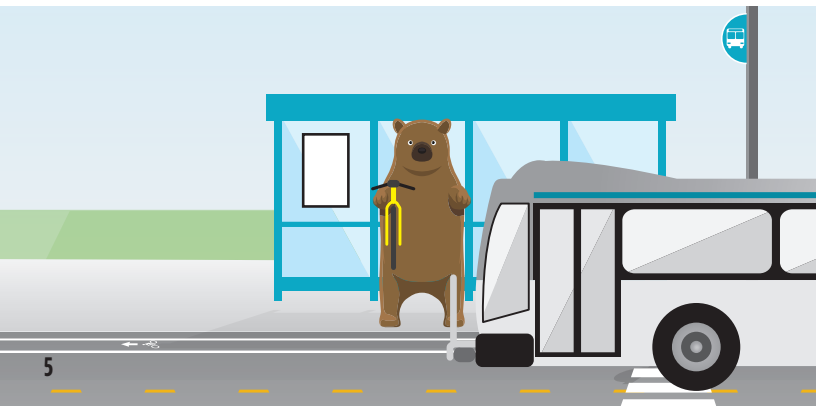


- 5. EXIT.** If you can, exit through the rear door. Don't cross the street until the bus pulls away.

How do I...?

Load my bike onto the front of the bus?

- » Notify the bus driver.
- » Squeeze the bike rack handle and pull down the rack to load your bike.
- » Make sure your bike is secure: extend the hook over your tire.
- » Ride near the front of the bus so you can keep an eye on your bike (*but please always remember to give up your seat to someone in need of priority seating*).
- » At the end of your bus ride, exit through the **front** door and let the bus driver know that you need to unload your bicycle.



Transfer to another bus?

Sometimes it takes more than one bus to reach your destination. With your transit pass, as long as you are traveling within the same system (AC Transit, Union City Transit, etc.), your transfers are free. Plan ahead to know your transfer bus stop — your second bus will likely arrive soon, but be prepared to wait a few minutes.



Remember: **safety tips**

Do not run after or next to a moving bus.



When waiting for your bus to arrive, be visible and stand back from the curb.



What if I...?

- 1. CAN'T FIND MY STOP OR GET LOST?** If you can't find your stop, review your transit app (Google Maps, NextBus, etc.). You can also always call your transit agencies: **AC Transit: 510-891-4777** **Union City: 510-471-1411** or **511** (*general travel information*).
- 2. MISS THE BUS?** Sometimes, even when you plan ahead, your bus ride might not go as planned. If you miss the bus, it is best to be patient and wait for the next bus to arrive. Most AC Transit and Union City buses come every 10 to 15 minutes.
- 3. MISS MY STOP?** If you miss your stop, ask the driver where the nearest bus stop to take you back in the other direction is, and get off there. Often, the bus stop to take you back is right across the street. If you have a transit app or a schedule, reconfirm your route.
- 4. WHAT IF THE BIKE RACKS ARE FULL?** Unfortunately, if the bike racks are taken, you will have to wait for the next scheduled bus to arrive for you to load your bike.
- 5. BOARD THE WRONG BUS?** If you board the wrong bus, consult with the bus driver, bus map, your transit app, or printed schedule. The bus driver can always help if you have questions about where bus stops are, how to transfer, or finding your destination.

Where's my bus?

Call or **Text 511** (you can indicate your location by using the bus stop ID on the bus stop sign)

Check the AC Transit or Union website:
<http://www.actransit.org/rider-info/realtime/>
<http://www.uctransit.org/>

Check bus route's online or printed schedule

Check bus stop's real-time information display

Check any number of smartphone apps: NextBus, Transit, and Moovit



Be respectful on the bus

- » **Respect** other riders.
- » **Keep your feet off the seats** to keep the bus clean.
- » **Priority seating** is for people with disabilities and seniors. When sitting there, you must give up your seat to those needing it; when seated elsewhere, always consider offering your seat to older adults and parents with young children.
- » **Take off your backpack** to make room for other people.
- » **Listen to your music with headphones** so you don't disturb other riders.
- » **Eating or drinking is not allowed.**
- » **Keep aisles and doorways clear.**



Trip planning

COST OF FARE: An AC Transit local bus fare is **\$1.05** for a student ride or **\$2.50** for a day pass. Union City Transit costs **\$1.25 per ride**. When you travel with your transit pass, you will not have to pay a fare. Just tag your Clipper Card on the Clipper Card reader (AC Transit) or show your student ID with the transit pass sticker to the driver (Union City Transit) when you enter the bus.

SCHEDULES AND MAPS:

- » Posted at many transit bus shelters
- » Find route maps online:
<http://www.actransit.org/maps/> and <http://www.uctransit.org>
- » Printed schedules are located in the collection of maps behind the driver's seat on each AC Transit bus

ONLINE TOOLS AND WEBSITES:

- <http://www.actransit.org/rider-info/realtime/>

APPS: There are several smartphone apps that can help you plan your trip and figure out when your bus is coming. Below is a list of some of the most popular smartphone transit apps.



Google Maps



Transit



Moovit



AC Transit
TipNow



Next Bus



Citymapper

Download from the Apple or Android App Stores

