



**Measure B/ Measure BB / Vehicle Registration Fee
Timely Use of Funds Policies**

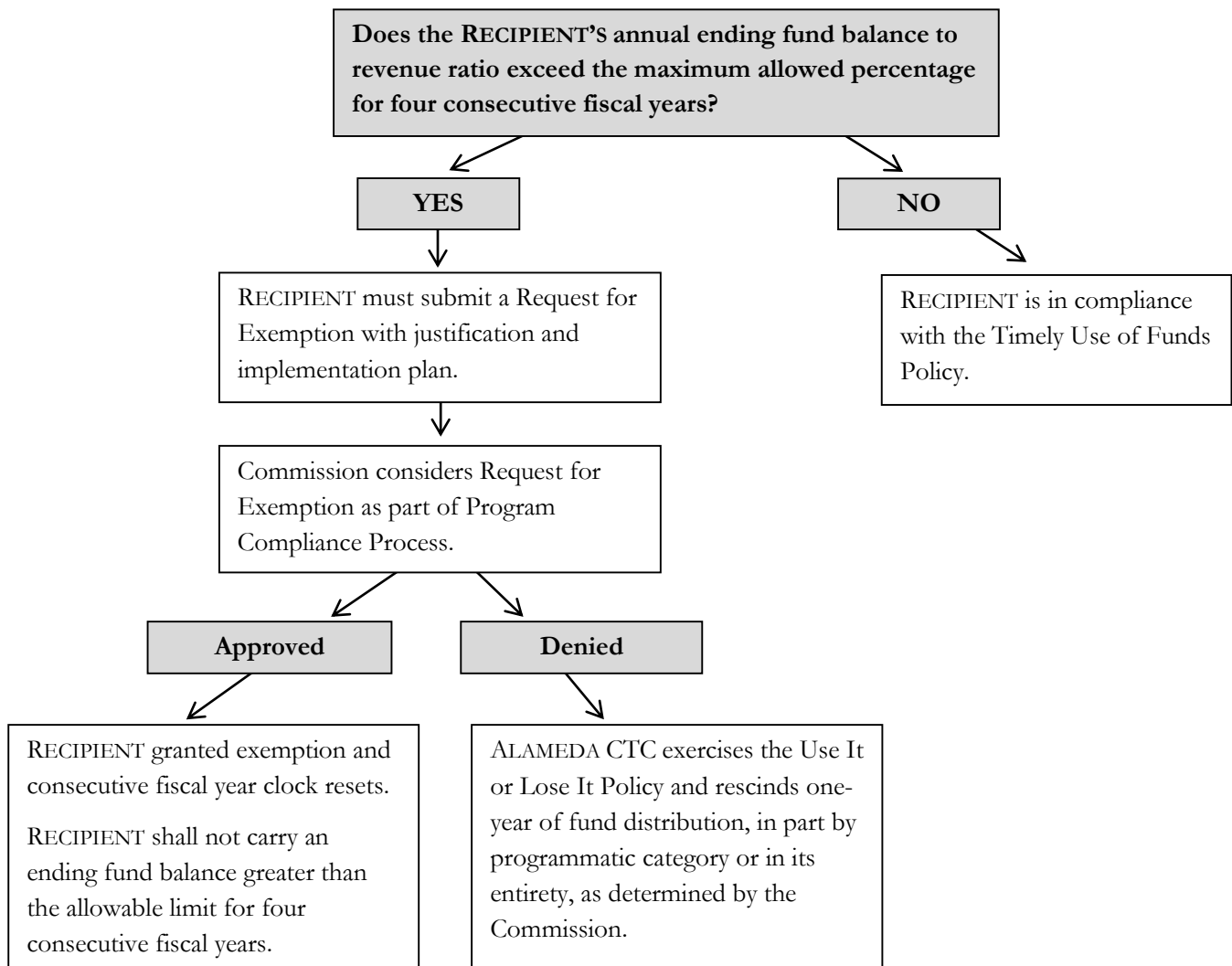
TIMELY USE OF FUNDS POLICY

INTENT: The intent of the Timely Use of Funds Policy is to encourage Measure B/Measure BB/Vehicle Registration Fee recipients to expend voter-approved transportation dollars expeditiously on transportation improvements and operations that the public can use and benefit from immediately.

POLICY: RECIPIENT shall not carry a fiscal year ending fund balance greater than 40 percent of the Direct Local Distribution revenue received for that same fiscal year for four consecutive fiscal years, by funding program. Non-compliance with this policy may invoke rescission penalties per the Use it or Lose It Policy.

RECIPIENT may seek an exemption from the Timely Use of Funds Policy through the Annual Program Compliance reporting process. RECIPIENT must demonstrate that extraordinary circumstances have occurred and provide a timely expenditure plan that would justify the exemption. Exemption requests must be submitted to ALAMEDA CTC and approved by the Commission.

IMPLEMENTATION: Through the Annual Program Compliance reporting process, ALAMEDA CTC will monitor the RECIPIENT’s annual ending fund balance to revenue received ratio, cumulatively across the RECIPIENT’s programmatic categories by fund program, to verify policy compliance.





Measure B/ Measure BB / Vehicle Registration Fee

Timely Use of Funds Policies

USE IT OR LOSE IT POLICY

INTENT: The Use It or Lose It Policy serves as the penalty action for non-compliance with the Timely Use of Funds Policy for Measure B/Measure BB/Vehicle Registration Fee Direct Local Distribution program funds. The Use It or Lose It Policy enforces the timely use of funds requirements to encourage the RECIPIENT to expend voter-approved transportation dollars expeditiously on transportation improvements and operations that the public can use and benefit from immediately.

POLICY: If RECIPIENT does not meet the requirements of the Timely Use of Funds Policy, ALAMEDA CTC may determine that the RECIPIENT does not need Measure B/Measure BB/Vehicle Registration Fee funding. In such a case, ALAMEDA CTC may exercise the Use It or Lose It Policy to rescind the RECIPIENT’s subsequent fiscal year’s Measure B/Measure BB/Vehicle Registration Fee Direct Local Distribution, in part by programmatic category or in its entirety. All such funds rescinded by ALAMEDA CTC shall be placed into an account for redistribution to the same programmatic type.

IMPLEMENTATION: If a RECIPIENT does not meet the provisions of the Timely Use of Funds Policy, ALAMEDA CTC may exercise the Use it or Lose It Policy and rescind the RECIPIENT’s subsequent year’s Measure B/Measure BB/Vehicle Registration Fee Direct Local Distribution. ALAMEDA CTC will redistribute rescinded funds to other eligible recipients within the same programmatic type. Redistribution will be determined by the existing formula distribution for the respective fund program and programmatic type.

