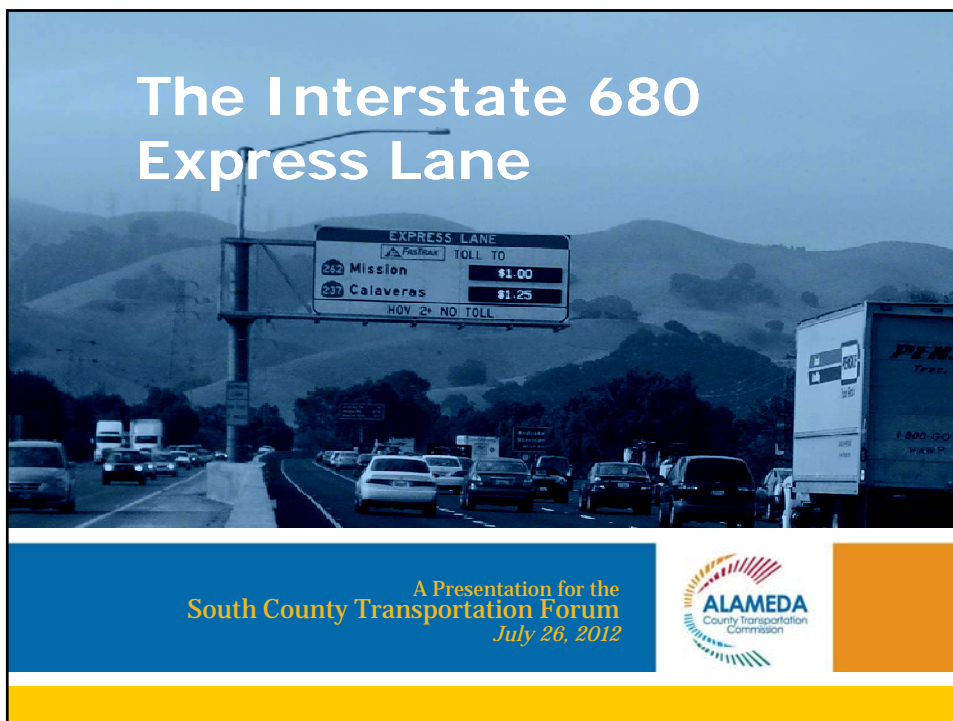


The Interstate 680 Express Lane



A Presentation for the
South County Transportation Forum
July 26, 2012



I-680 Express Lane Project

- Part of 550-mile bay regional toll lane network
- First operating toll lane in N Cal
- 14-mile stretch over the Sunol Grade
- Three entry points, three exit points
- 'Dynamic pricing'



South County Transportation Forum

July 26, 2012



2

Project Benefits

- Improves congestion/safety by efficient management of existing roadway
- Provides new mobility option & travel reliability
- Provides revenue for operations & future corridor improvements

South County Transportation Forum

July 26, 2012



3

Express Lane At a Glance

- Solo drivers can pay a toll to use the HOV lane
- Toll rises with traffic congestion
- Operating hours:
 - *Monday-Friday, 5 a.m. to 8 p.m.*
- Free for regular HOV lane users

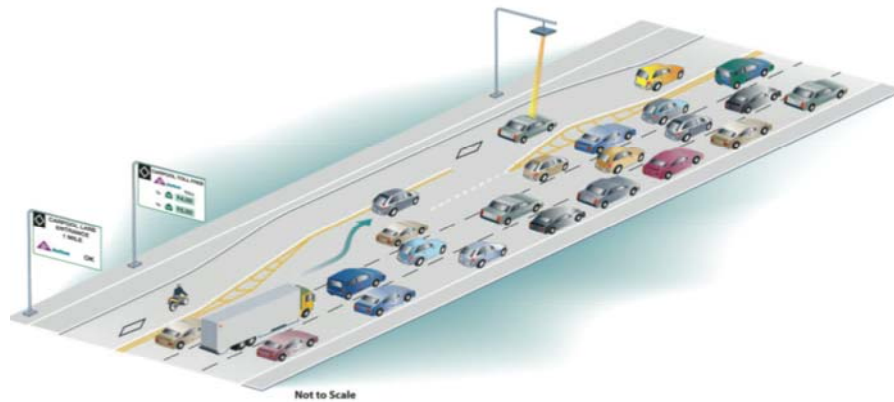
South County Transportation Forum

July 26, 2012



4

How the Lane Works

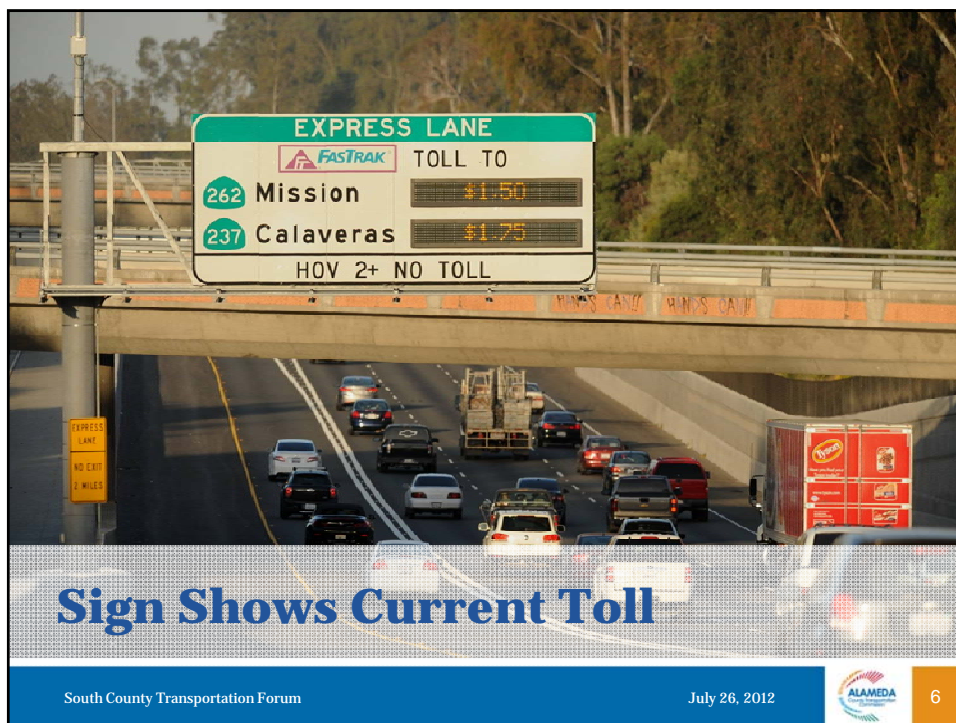


South County Transportation Forum

July 26, 2012



5

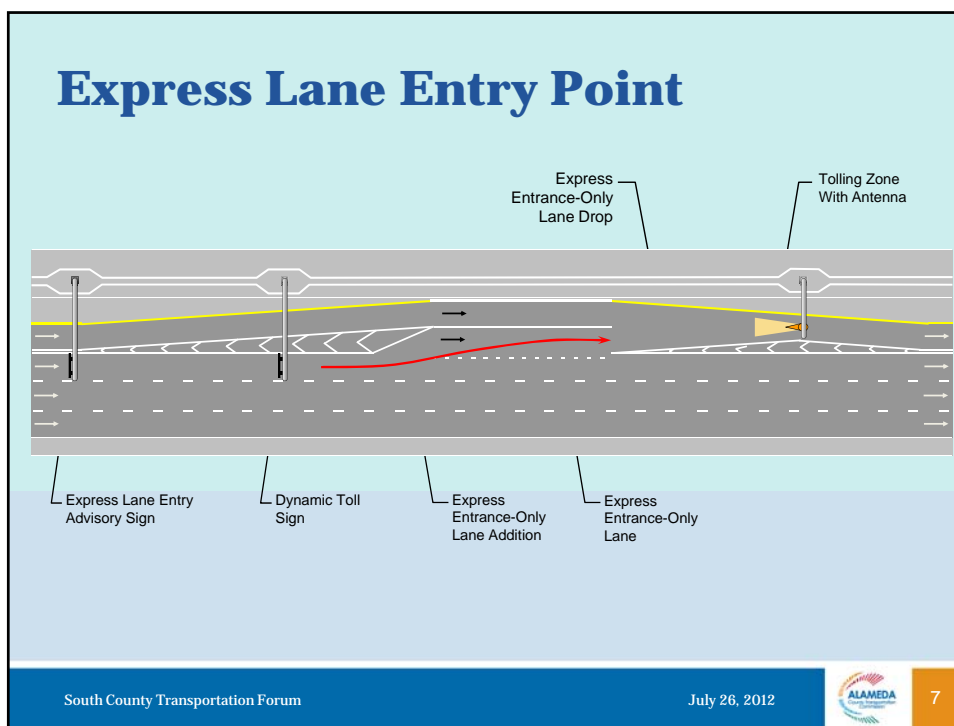


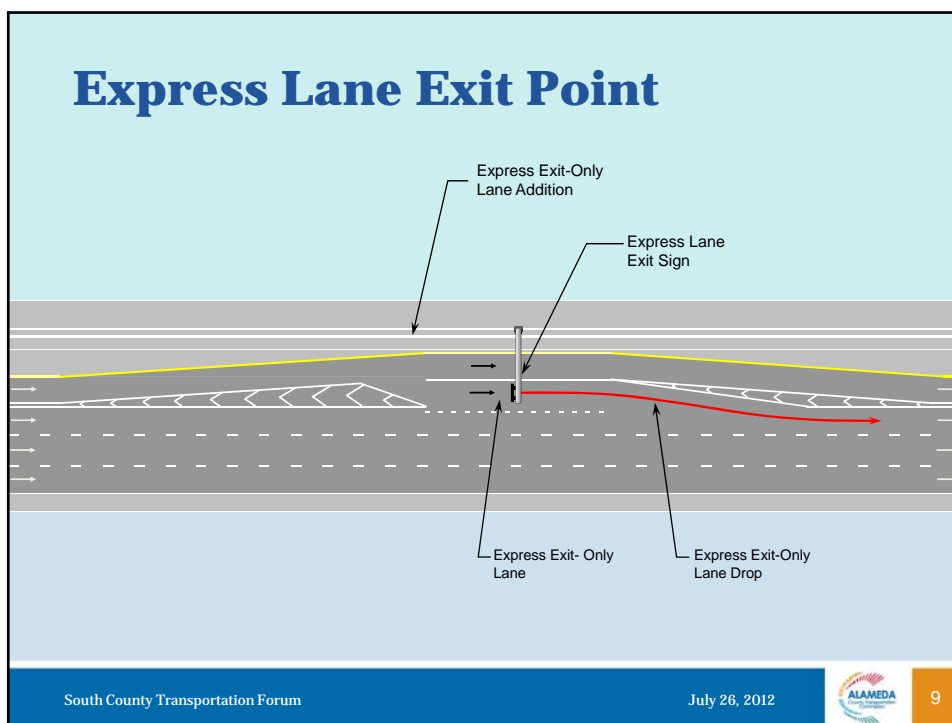
South County Transportation Forum

July 26, 2012



6





How It's Working So Far

- Approximately 1,900 daily toll paying users
- EL trips & revenue continue to raise
- Congestion improved in EL & GP Lanes
- EL provides reliable travel time
- Toll pays for majority of operating costs

EL- Express Lane
GP – General Purposes Lane

South County Transportation Forum


July 26, 2012

ALAMEDA

10


Comparison of FY11 and FY12 Metrics

	FY 2010/11 (Sept 2010 – June 2011)	FY 2011/12 (Sept 2011 – June 2012)
Actual Gross Revenue	\$641,700	\$945,200
<i>... during the commute hours the ...</i>		
Average Daily Toll Users	1,340	1,800
Average Daily Throughput	143,600	143,200
Average Speed(EL)	72 mph	74 mph
Average Speed(GP)	65 mph	71 mph

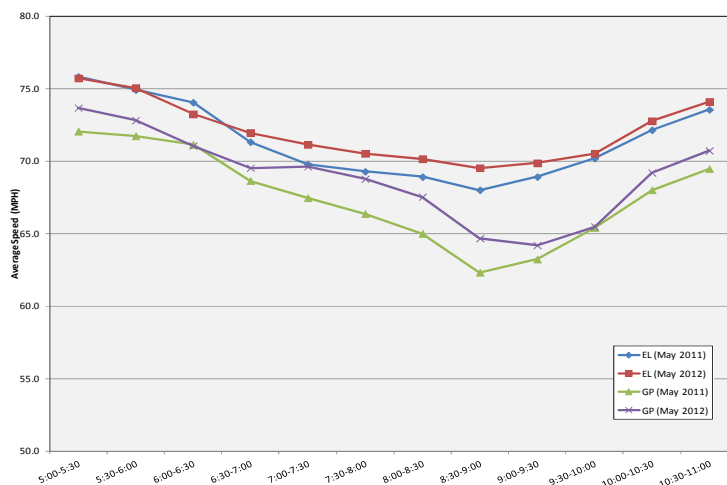
South County Transportation Forum July 26, 2012  11

Year Over Year Comparison by Month

	June 2011	June 2012
Average Daily Revenue	\$3,630	\$4,470
Average Daily Trips (EL)	1,570	2,050
Average Peak Hour Toll Rate	\$2.78	\$2.61

South County Transportation Forum July 26, 2012  12

Average Travel Speed During Morning Commute Hours (Within 14-mile Express Lane Facility)



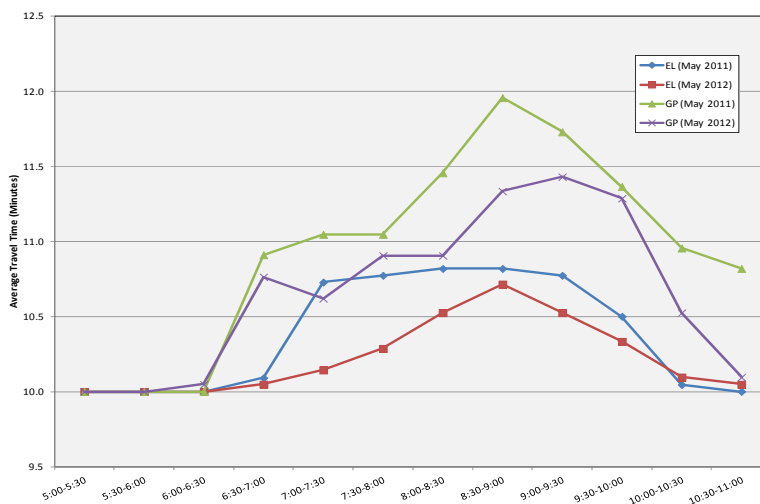
South County Transportation Forum

July 26, 2012



13

Average Travel Time During Morning Commute Hours (Within 14-mile Express Lane Facility)



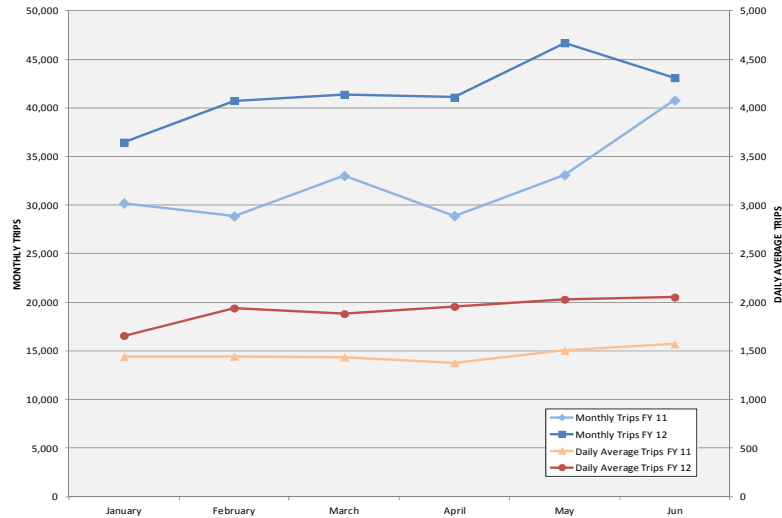
South County Transportation Forum

July 26, 2012



14

Average Monthly/Daily Express Lane Trips Comparison



South County Transportation Forum

July 26, 2012



15

Lessons Learned

- New facilities have a “learning curve”
- Limited opposition, mostly related to controlled access points
- Congestion declined in a down economy

South County Transportation Forum

July 26, 2012



16

Project Website

- Information about the lane
- Link to sign up for FasTrak
- Manage your FasTrak account



<http://www.680expresslane.org>

