

South County Transportation Forum – July 21, 2011

Alameda County I-680 Express Lane



Area Location Map



Traffic Congestion Polls As a Top Bay Area Concern

Express Lanes:

- Proven tool for managing congestion
- Support for Express Lane among all income levels
- #1 users are parents picking up / dropping off children
- Students and workers that can't be late
- Occasional users who want a **choice**



I-680 Express Lane

- Bay Area's First HOT Lane Project
- Converts Existing HOV Lane To A Combined HOV / HOT Lane
- 14-Mile Stretch Of Southbound I-680 Over The Sunol Grade
- Starts at Highway 84 in The North and Ends At Highway 237 In The South



Benefits of Express Lanes

- **Increases efficiency of existing roadway**
- **Provides solo drivers with another commute option that is fast and reliable**
- **Revenue used to operate the lanes**
- **Revenue reinvested in transportation improvements**



Multiple Fund Sources

- **Measure B ½ Cent Sales Tax (Alameda Co.) over \$26 Million**
- **Federal Value Pricing Funds**
- **State Transportation Improvement Funds**
- **State Highway Operation and Protection Program (SHOPP)**
- **Local Santa Clara County Funds**



Agreements with Partners

Partnering Agencies:

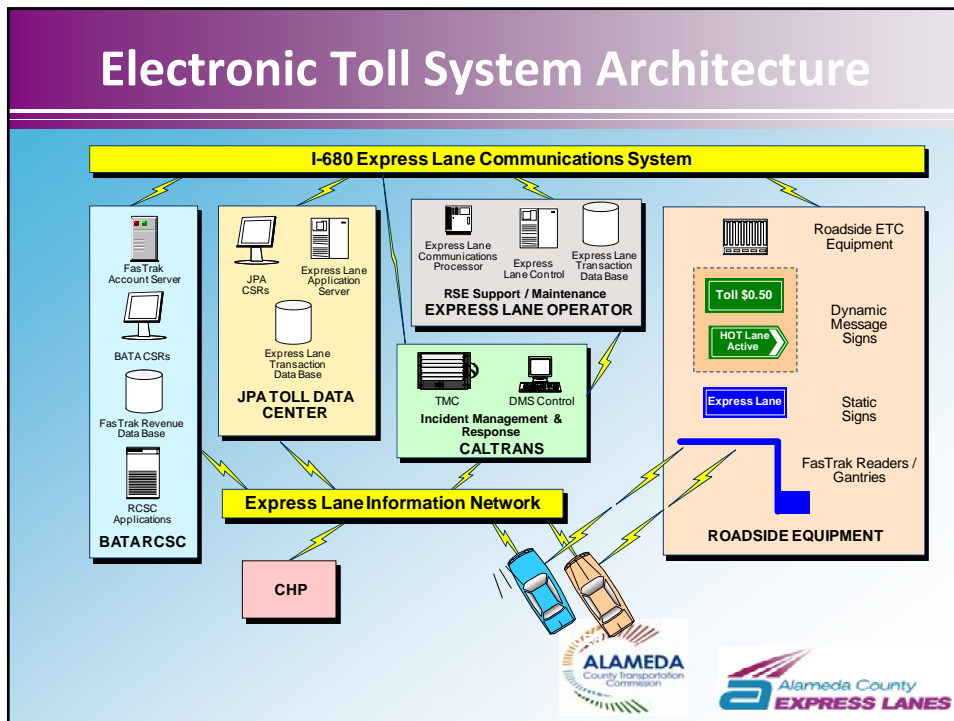
- BATA Provides
 - Customer Service
 - Revenue Collection

- Caltrans Provides
 - Maintenance of Facility

- CHP Provides
 - Enforcement



Electronic Toll System Architecture



Electronic Tolling System

- All Electronic Toll Collection System (ETS)
- Full Interoperability With FasTrak ETC System (Title-21)
- Integration With BATA Regional Customer Service And Account Management Systems
- Visual System Enforcement By The CHP Assisted By Electronic Equipment



Unique Toll System Features

- Full Traffic Monitoring in Express and Mixed Use Lanes
- Enforcement Using Hand-Held Portable Devices
- Dynamic/Congestion Pricing



Enforcement Strategy

- Enforcement Agency
 - California Highway Patrol
- Visual Enforcement From CHP
- System Enforcement Technologies:
 - FasTrak Transponder detection beacons
 - Mobile enforcement readers
 - Hand-Held enforcement devices

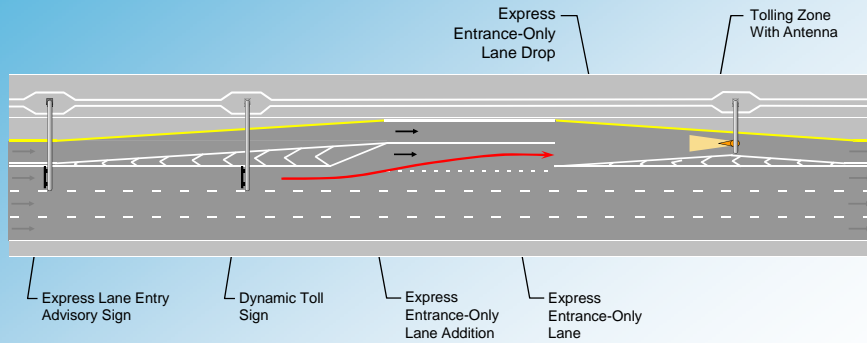


Tolling Policy

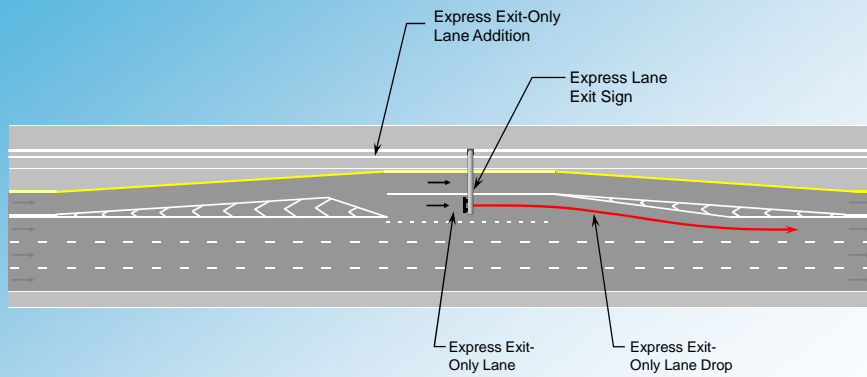
- Express Lane has Limited ingress/egress
- Express Lane is separated by 2' buffer
- Express Lane Hours of Operations
 - **5 am to 8 pm**
 - **Longer than most HOV Lane hours**
- Balancing Corridor throughput while providing a time advantage to those in Express Lane

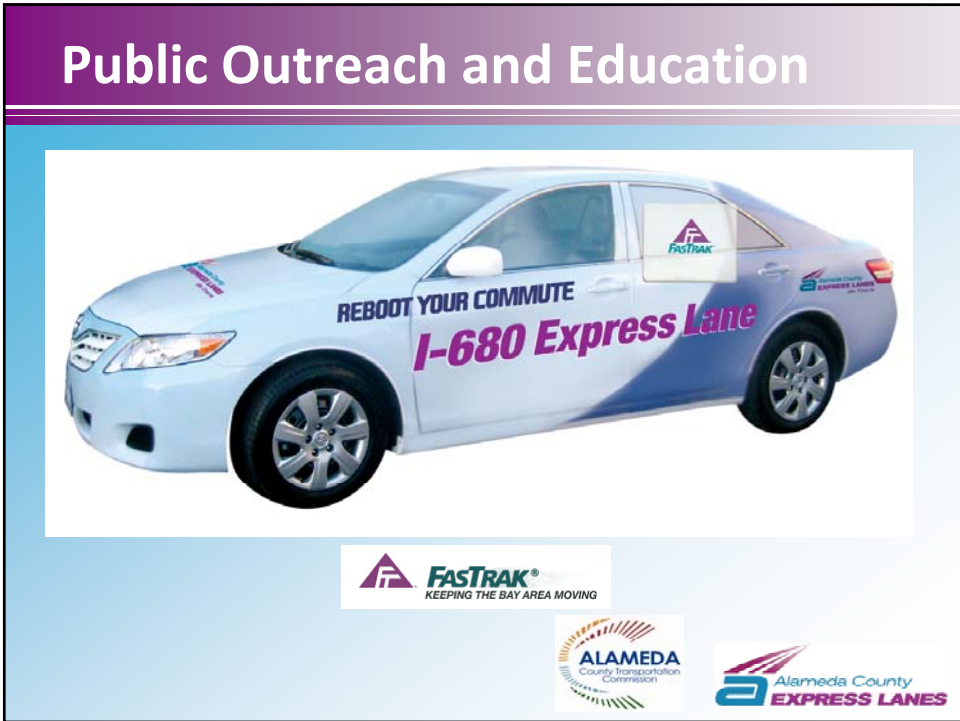


I-680 Express Lane Intermediate Entrance / Tolling Zone Concept



I-680 Express Lane Intermediate Exit Concept





Marketing Campaign

YouTube | I 680 Express Lane | Search | Browse | Upload

680 Express Lane Opening September 20 2010
 kad9737 | 14 videos | Subscribe

Just watched | Up next

Replay | Like



680 and 580 Express Lanes Information

REBOOT YOUR COMMUTE

I-680 Express Lane opens September 20th!
 Get FasTrak® and get \$10 in FREE toll credits!

www.680expresslane.org

*See website for details.

Additional Outreach & Media



\$10 in FREE toll credits for a new account!




www.680expresslane.org



REBOOT YOUR COMMUTE and escape from traffic



Get FasTrak®!

*To set up your FasTrak account or for more info, call 511 and say "FasTrak" or visit www.680expresslane.org.




Next Steps in Alameda County

- I-680 Northbound Express Lane
- I-580 Eastbound and Westbound HOT Express Lanes



QUESTIONS?

