




I-80 Integrated Corridor Mobility (I-80 ICM) Project North County Transportation Forum

A Presentation by
Raj Murthy
October 20, 2011



Project Location - I-80 and San Pablo Ave. (SR 123)



Purpose and Need

Purpose

- Provides tools to actively manage the traffic and incidents
- Provides information to drivers
- Improve travel time and safety



Purpose and Need

Need

- I-80 is one of the most congested freeways in the Bay Area
- Projected a 50% freeway demand increase by 2035
- High accident rates along the freeway
- No coordination between I-80, San Pablo Avenue or transit operators

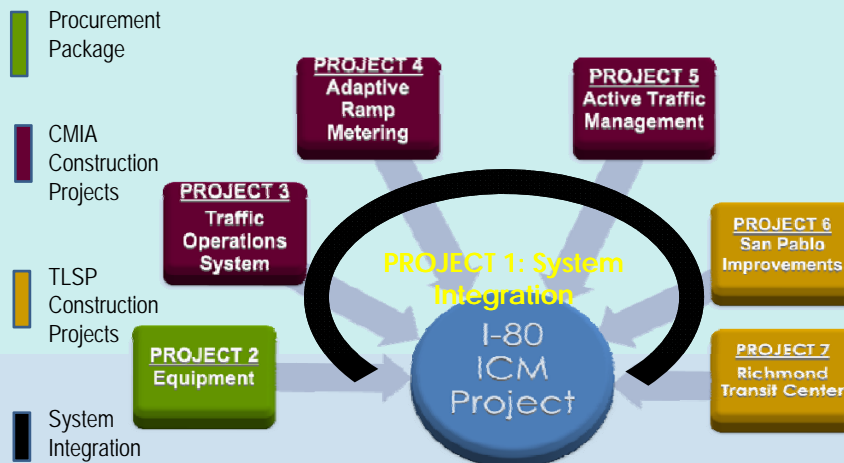


Project Scope

- Mainline Adaptive Ramp Metering
- Mainline Incident Management
- Traffic and Transit Information
- Arterial Improvements (San Pablo Ave.):
 - *Signal Improvements*
 - *Transit Signal Priority (TSP)*
- Integration of Freeway and Local Arterial Operations



Delivery Strategy

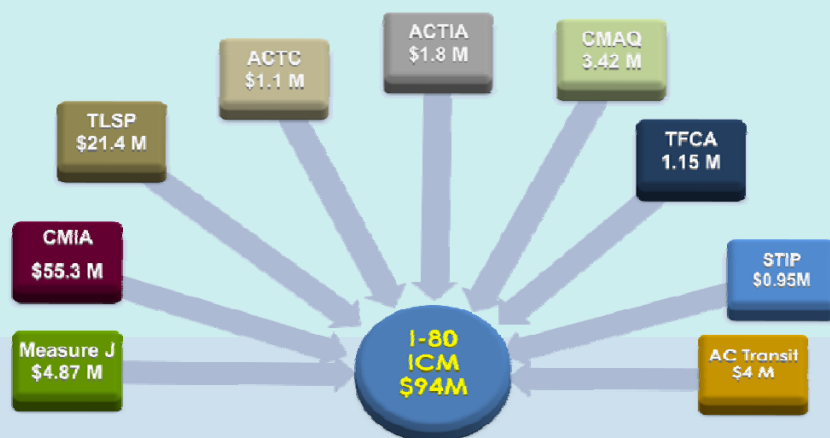


Project Team

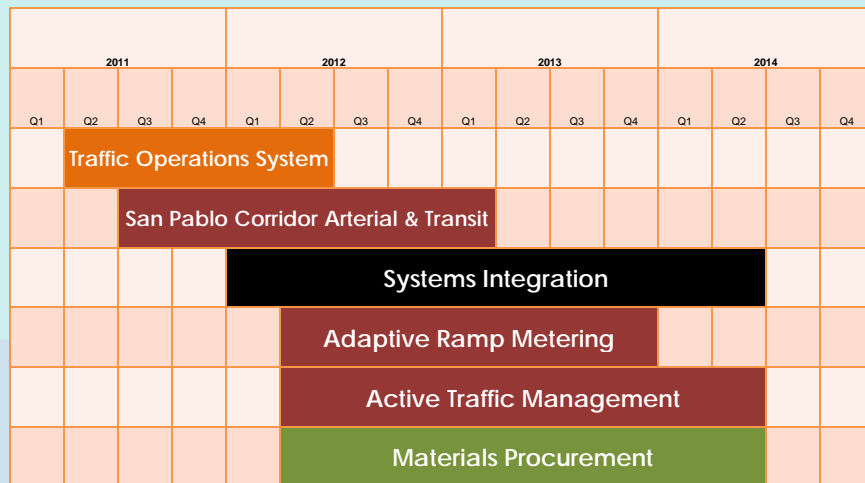
- Executive Steering Committee:
 - *Caltrans District Director, Executive Directors for Metropolitan Transportation Commission (MTC), Alameda County Transportation Commission (Alameda CTC), Contra Costa Transportation Authority (CCTA)*
- Project Leadership Team:
 - *Deputy Directors for Caltrans, MTC, Alameda CTC, CCTA*
- Technical Team:
 - *Technical Advisory Staff (Locals)*
 - *Project Development Team*



Project Funding



Construction Schedule



Recent Milestones

- Approval of Environmental Document
✓ July 29, 2011
- System Integrator RFP released
✓ September 30, 2011



Next Steps

Begin Construction on:

- Adaptive Ramp Metering Project May 2012
- Active Traffic Management Project May 2012
- Material Procurement Spring 2012



Questions

