

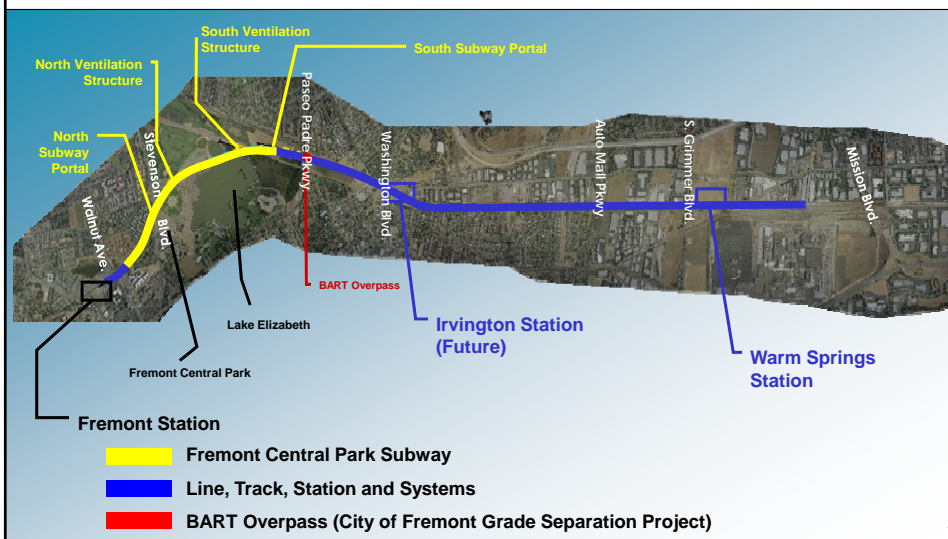
Alameda County Transportation Commission
South County Transportation Forum
July 21, 2011



Warm Springs Extension Project



Warm Springs Extension Alignment





WSX Project Benefits



- ▼ Maximize opportunities to foster "smart growth".
- ▼ Enhance transit opportunities.
- ▼ Relieve overall traffic congestion.
- ▼ Increase new transit trips in Alameda County.
- ▼ Reduce the emission of greenhouse gases, toxic air contaminants, reactive organic gases, oxides of nitrogen, and particulate matter.
- ▼ Facilitate decrease in transportation energy consumption & increase energy efficiency.
- ▼ Decrease in annual automobile and bus vehicle miles travelled.
- ▼ Create jobs.
- ▼ Serve as a gateway for BART service into Santa Clara County.


3



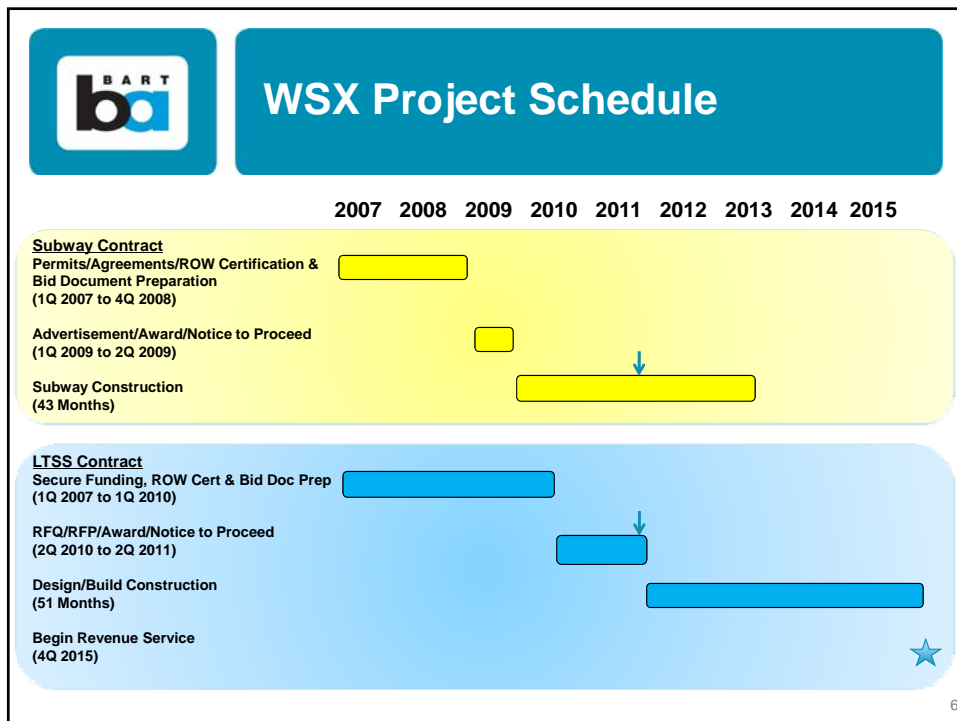
WSX Project Funding

Current Funding	Amount (Millions)
Alameda County 2000 Measure B Tier 1	\$220.2
State Traffic Congestion Relief Program (TCRP)	\$100.6
Regional Measure 1 Bridge Tolls	\$118.0
Alameda County Congestion Management Agency (CMA)	\$2.2
Proposition 1B 50% Revenue-Based (BART), 50% Population-Based (MTC)	\$40.0
Regional Measure 2 Bridge Tolls (Includes \$91M Dumbarton Swap)	\$176.0
Proposition 1B State Local Partnership Program (SLPP) (MTC \$40M, ACTIA \$30M, SCVTA \$16M)	\$86.0
BART Agency Contribution	\$24.0
Total Current Funding	\$767.0
Unfunded Program Reserve/Future Programming	
State Transportation Improvement Program (STIP)	\$69.0
San Francisco Airport Extension Surplus Revenues (\$27M MTC Advance, \$27M ACTIA/BART Advance)	\$54.0
Total Unfunded Program Reserve/Future Programming	\$123.0
Total Warm Springs Funding	\$890.0

4

	<h2>WSX Estimated Project Costs</h2>
	Amount (Millions)
Conceptual Engineering/Environmental Studies	\$10
Design Engineering (Bid Document Preparation)	\$40
Construction (Including Contingency and Related Soft Costs)	\$630
Right of Way Acquisition and Agreements	\$90
Reserve/Transit Vehicles	\$120
	Total \$890 Million

5



6





WSX Subway Work Progress



9



WSX Subway Work Progress



10



WSX Subway Work Progress



WSX Subway Work Progress





WSX Subway Work Progress



WSX Subway Work Progress





WSX Subway Work Progress



WSX Subway Work Progress





WSX Subway Work Progress



WSX Subway Work Progress





WSX Subway Work Progress



19



WSX Subway Work Progress



20



WSX Warm Springs Station Simulation



WSX Warm Springs Station Simulation

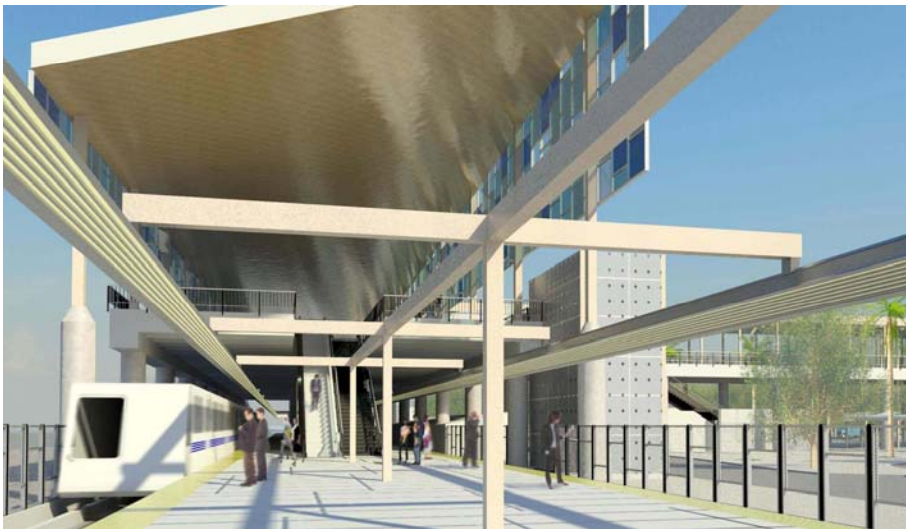




WSX Warm Springs Station Simulation



WSX Warm Springs Station Simulation





Q & A



▼ For More Information

- BART Website www.bart.gov/wsx
- Information Line 510.476.3900
- Fax 510.287.4747
- Email Address bartwarmspringsextension@bart.gov