


Project Delivery Strategy  
and Status Update

A Presentation for the I-580 Express Lane  
Policy Advisory Committee  
January 9, 2012




ALA580 HOV/HOT LANE CORRIDOR PROJECTS

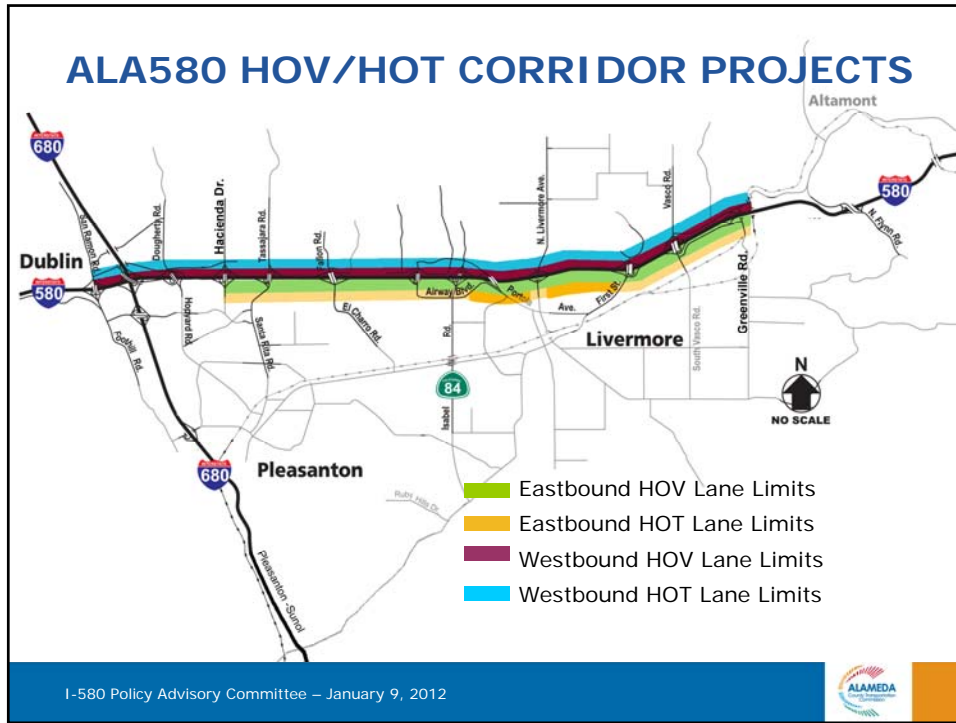
**PURPOSE OF PRESENTATION**

**Update ALA580 HOV/HOT Corridor**

- Scope
- Schedule
- Cost
- Risks

I-580 Policy Advisory Committee – January 9, 2012



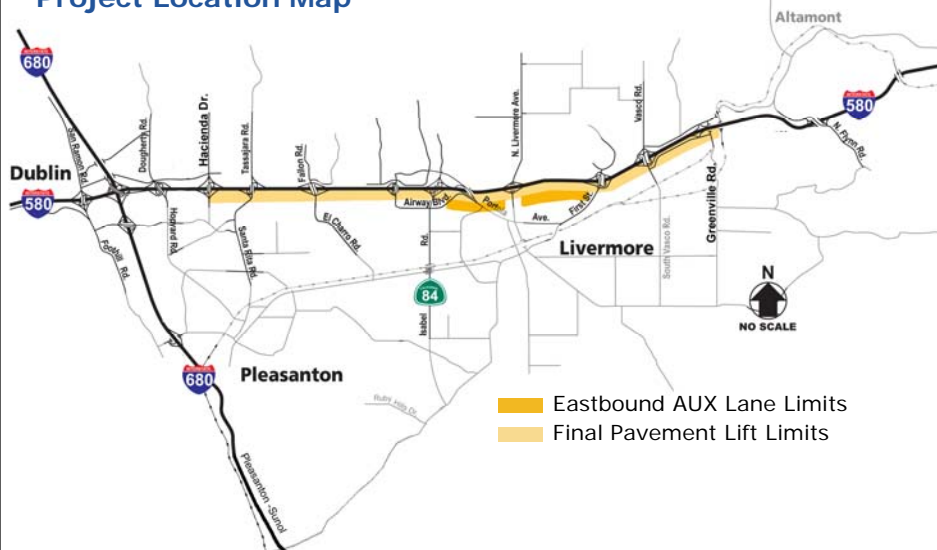


## ALA580 EASTBOUND HOV LANE Project Scope

Split into three construction contracts

- **Segment 1 – Portola to Greenville**
  - HOV Lane opened October 2009
- **Segment 2 – Hacienda to Portola**
  - HOV Lane opened November 2010
- **Segment 3 – Auxiliary (AUX) Lane from Hacienda to Portola**
  - Aux Lane begin construction September 2012

## ALA580 EASTBOUND Segment 3, Aux Lane Project Location Map



### ALA580 EASTBOUND SEGMENT 3 Project Scope – Aux Lane

- Aux Lanes – Isabel Avenue to First Street
- Includes the pavement width necessary for a double HOT Lane facility
- Includes final lift of AC Pavement for entire EB limits
- Includes sound wall deleted from the I-580/Isabel Avenue Interchange Project
- Includes two EB bridges widening



### ALA580 EASTBOUND SEGMENT 3 Project Schedule – Aux Lane

Project Approval	December 2011 (A)
RTL	April 2012
CTC Vote	May 2012
Begin Construction	September 2012
End Construction	November 2014



### ALA580 EASTBOUND SEGMENT 3 Project Cost – Aux Lane

	CMIA	RM2	TVTC	FED	HOV Paving (SHOPP)	Meas B	Total
<b>PA&amp;ED</b>							
<b>PS&amp;E</b>		2.20	1.43	0.23			<b>3.86</b>
<b>ROW</b>		0.20	0.20				<b>0.40</b>
<b>Construct Cap</b>	19.03	1.70			5.00	6.62	<b>32.35</b>
<b>Construct Sup</b>	2.53	0.38				0.43	<b>3.34</b>
<b>TOTAL</b>	<b>21.56</b>	<b>4.48</b>	<b>1.63</b>	<b>0.23</b>	<b>5.00</b>	<b>7.05</b>	<b>39.95</b>

**Total Project Cost: \$39.95 M**



### ALA580 EASTBOUND SEGMENT 3 Project Risks – Aux Lane

- CTC labeled medium risk
- PSE-HQ                      February 2012
- Permits
- RWC 3W





### ALA580 WESTBOUND HOV LANE Project Scope

Split into three construction contracts

- **Segment 1 – East HOV Segment, Greenville to Isabel**
  - HOV Lanes begin construction August 2012
- **Segment 2 – West HOV Segment, Isabel to San Ramon Road**
  - HOV Lane begin construction July 2012
- **Segment 3 – Widen EB Bridges @ Arroyo Las Positas Creek**
  - Combined with EB HOV Segment 3, begin construction September 2012

I-580 Policy Advisory Committee – January 9, 2012

**ALA580 WESTBOUND HOV LANE, SEGMENT 1**  
**Project Schedule – East Segment**

Project Approval	January 2010 (A)
RTL	March 2012
CTC Vote	April 2012
Begin Construction	August 2012
End Construction	November 2014



**ALA580 WESTBOUND HOV LANE, SEGMENT 2**  
**Project Schedule – West Segment**

Project Approval	January 2010 (A)
RTL	February 2012
CTC Vote	March 2012
Begin Construction	July 2012
End Construction	November 2014



**ALA580 WESTBOUND HOV LANE, SEGMENT 1  
Project Cost – East Segment**

	CMIA	RM2	TCRP	FED	Pavement Rehab (SHOPP)	Meas B	TVTC	Total
<b>PA&amp;ED</b>		4.90				0.20		<b>5.10</b>
<b>PS&amp;E</b>		1.11		0.13		0.20	0.50	<b>1.94</b>
<b>ROW</b>		1.07						<b>1.07</b>
<b>Construct Capital</b>	42.82		5.92	8.67	16.40			<b>73.81</b>
<b>Construct Sup</b>	6.52		1.59					<b>8.11</b>
<b>Total</b>	<b>49.34</b>	<b>7.08</b>	<b>7.51</b>	<b>8.80</b>	<b>16.40</b>	<b>0.40</b>	<b>0.50</b>	<b>90.03</b>

**Total Project Cost: \$90.03 M**



**ALA580 WESTBOUND HOV LANE, SEGMENT 2  
Project Cost – West Segment**

	CMIA	RM2	TCRP	FED	HOV Paving (SHOPP)	TVTC	Total
<b>PA&amp;ED</b>		4.85					<b>4.85</b>
<b>PS&amp;E</b>		0.64		0.12		0.50	<b>1.26</b>
<b>ROW</b>		1.76					<b>1.76</b>
<b>Construct Capital</b>	45.61		2.49		13.00		<b>61.10</b>
<b>Construct Sup</b>	6.75						<b>6.75</b>
<b>TOTAL</b>	<b>52.36</b>	<b>7.25</b>	<b>2.49</b>	<b>0.12</b>	<b>13.00</b>	<b>0.50</b>	<b>75.72</b>

**Total Project Cost: \$75.72 M**

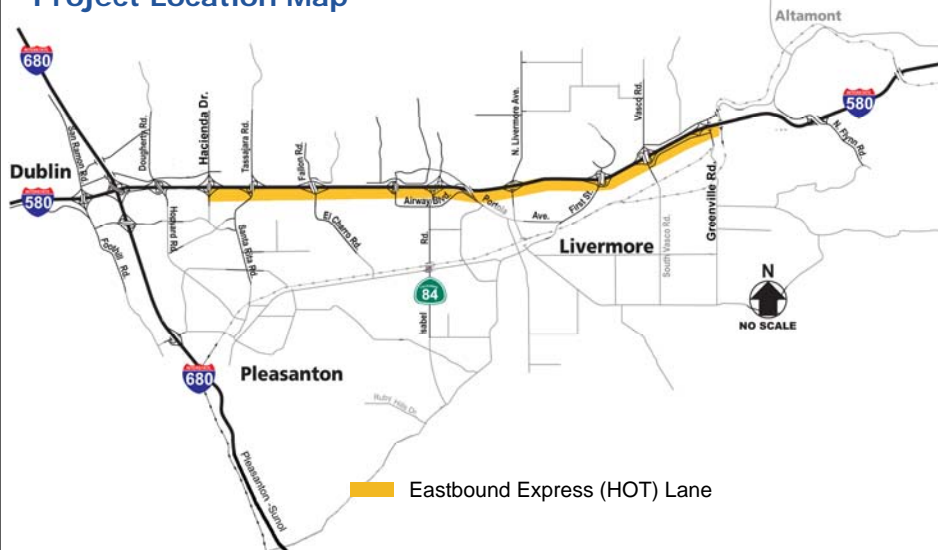




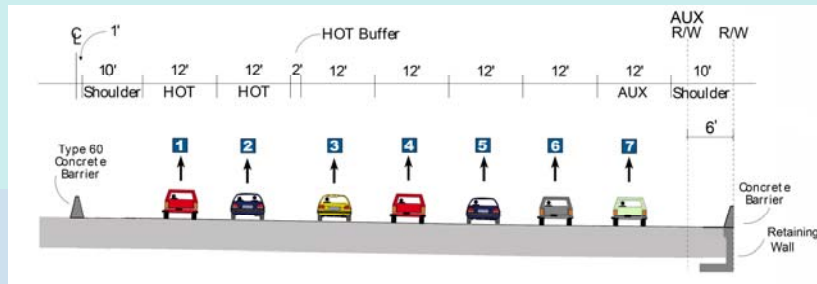
## ALA580 WESTBOUND HOV LANE Project Risks – East & West Segments

- CTC rated as low risks
- Accelerated reviews w/CT HQ-OE
- Right of Way Acquisition
- RWC 3W

## ALA580 EASTBOUND EXPRESS (HOT) LANE Project Location Map



## ALA580 EASTBOUND EXPRESS (HOT) LANE Project Scope



A double HOT lane facility with standard shoulder and lane widths where feasible.

## ALA580 EASTBOUND EXPRESS (HOT) LANE Project Schedule

Project Approval	May 2012
RTL	October 2012
Begin Construction	2014
End Construction	2015

## ALA580 EASTBOUND EXPRESS (HOT) LANE Project Cost

	ARRA	RM2	TVTC	Local (LONP)	Local (Meas. B)	Total
PA&ED		1.35	0.60			<b>1.95</b>
PS&E		0.17	0.35			<b>0.52</b>
Sys. Int.	7.50		0.25			<b>7.75</b>
ROW		0.20				<b>0.20</b>
Const. Support		0.58	0.18			<b>0.76</b>
Construct Cap		2.74		3.63	1.45	<b>7.82</b>
<b>TOTAL</b>	<b>7.50</b>	<b>5.04</b>	<b>1.38</b>	<b>3.63</b>	<b>1.45</b>	<b>19.0</b>

**Total Project Cost: \$19.0M**

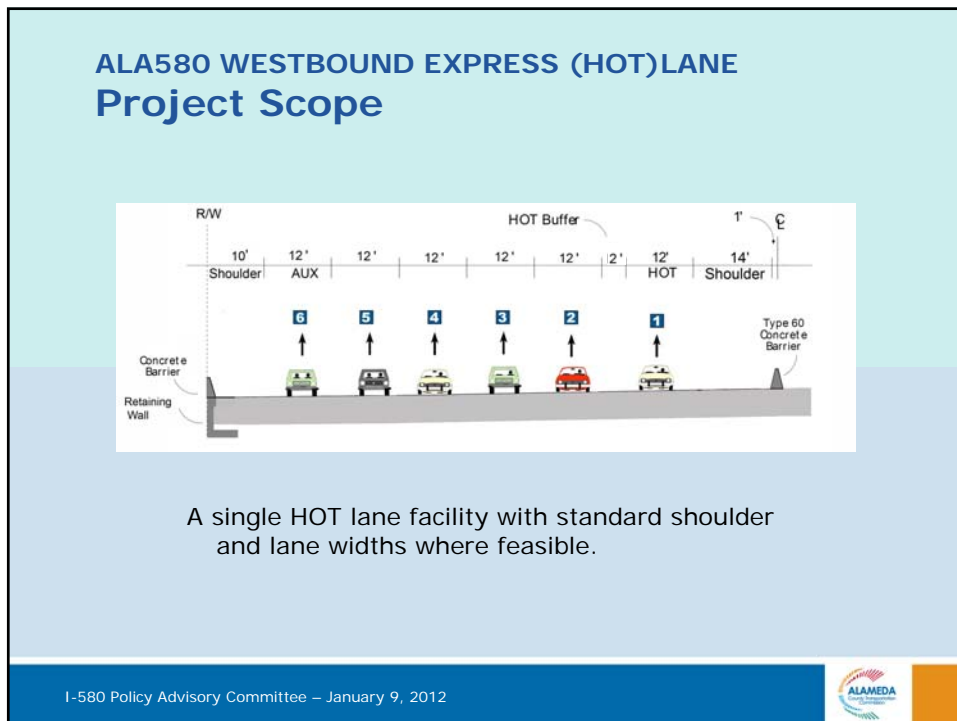
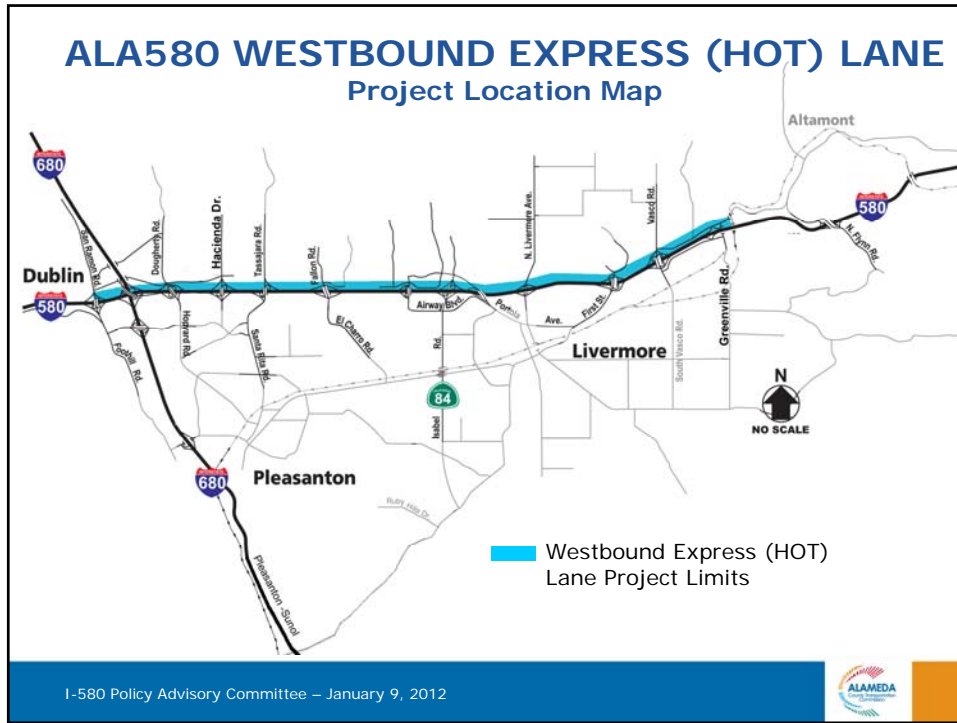
Construction total includes \$1.45 for first year O&M



## ALA580 EASTBOUND EXPRESS (HOT) LANE Project Risks

- Environmental Document
- Separate system integrator





## ALA580 WESTBOUND EXPRESS (HOT)LANE Project Schedule

Project Approval	July 2012
RTL	June 2013
Begin Construction	October 2014
End Construction	November 2015



## ALA580 WESTBOUND EXPRESS (HOT) LANE Project Cost

	Fed	TVTC	TBD*	Total
PA&ED	0.96	0.75		1.71
PS&E	0.04	0.25		0.29
Sys. Int.			6.00	6.00
ROW		0.20		0.20
Const. Support		0.90		0.90
Construct Cap		1.30	6.10	7.40
<b>TOTAL</b>	<b>1.00</b>	<b>3.40</b>	<b>12.10</b>	<b>16.50</b>

**Total Project Cost: \$16.50M**

\*TBD= Funding Shortfall



## ALA580 WESTBOUND EXPRESS (HOT)LANE Project Risks

- Environmental Document
- Separate system integrator
- Funding shortfall

## Questions / Answers

