



Meeting Notice

1111 Broadway, Suite 800, Oakland, CA 94607

• 510.208.7400

• www.AlamedaCTC.org

Commission Chair
Vice Mayor Rebecca Kaplan,
City of Oakland

Commission Vice Chair
Mayor Bill Harrison,
City of Fremont

AC Transit
Director Elsa Ortiz

Alameda County
Supervisor Scott Haggerty, District 1
Supervisor Richard Valle, District 2
Supervisor Wilma Chan, District 3
Supervisor Nate Miley, District 4
Supervisor Keith Carson, District 5

BART
Director Rebecca Saltzman

City of Alameda
Mayor Trish Spencer

City of Albany
Mayor Peter Maass

City of Berkeley
Councilmember Laurie Capitelli

City of Dublin
Mayor David Haubert

City of Emeryville
Councilmember Ruth Atkin

City of Hayward
Mayor Barbara Halliday

City of Livermore
Mayor John Marchand

City of Newark
Councilmember Luis Freitas

City of Oakland
Councilmember Dan Kalb

City of Piedmont
Mayor Margaret Fujioka

City of Pleasanton
Mayor Jerry Thorne

City of San Leandro
Mayor Pauline Cutter

City of Union City
Mayor Carol Dutra-Vernaci

Executive Director
Arthur L. Dao

I-680 Sunol Smart Carpool Lane Joint Powers Authority

Monday, April 11, 2016, 9:30 a.m.

Location:

1111 Broadway, Suite 800
Oakland, CA 94607

Teleconference Location:

Campbell City Hall
Doetsch Conf. Room, 70 N 1st St.
Campbell, CA 95008

Mission Statement

The mission of the Alameda County Transportation Commission (Alameda CTC) is to plan, fund, and deliver transportation programs and projects that expand access and improve mobility to foster a vibrant and livable Alameda County.

Public Comments

Public comments are limited to 3 minutes. Items not on the agenda are covered during the Public Comment section of the meeting, and items specific to an agenda item are covered during that agenda item discussion. If you wish to make a comment, fill out a speaker card, hand it to the clerk of the Commission, and wait until the chair calls your name. When you are summoned, come to the microphone and give your name and comment.

Recording of Public Meetings

The executive director or designee may designate one or more locations from which members of the public may broadcast, photograph, video record, or tape record open and public meetings without causing a distraction. If the Commission or any committee reasonably finds that noise, illumination, or obstruction of view related to these activities would persistently disrupt the proceedings, these activities must be discontinued or restricted as determined by the Commission or such committee (CA Government Code Sections 54953.5-54953.6).

Reminder

Please turn off your cell phones during the meeting. Please do not wear scented products so individuals with environmental sensitivities may attend the meeting.

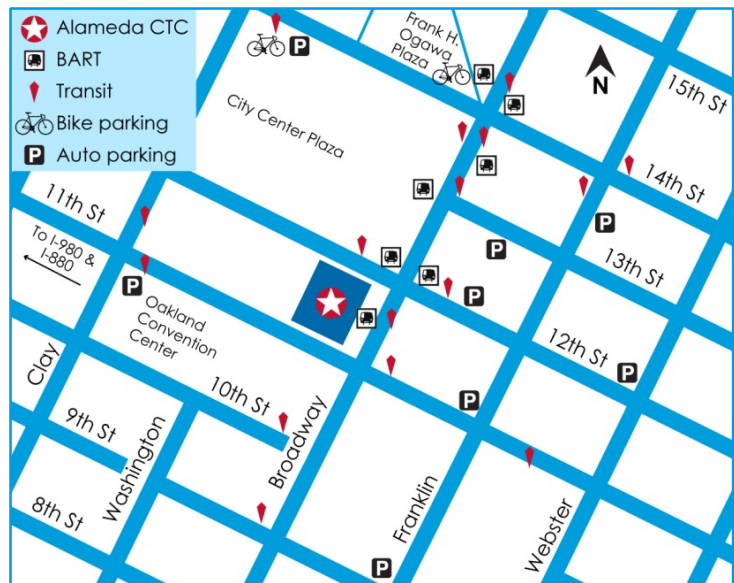
Glossary of Acronyms

A glossary that includes frequently used acronyms is available on the Alameda CTC website at www.AlamedaCTC.org/app_pages/view/8081.

Location Map

★ Alameda CTC
1111 Broadway, Suite 800
Oakland, CA 94607

Alameda CTC is accessible by multiple transportation modes. The office is conveniently located near the 12th Street/City Center BART station and many AC Transit bus lines. Bicycle parking is available on the street and in the BART station as well as in electronic lockers at 14th Street and Broadway near Frank Ogawa Plaza (requires purchase of key card from bikelink.org).



Garage parking is located beneath City Center, accessible via entrances on 14th Street between 1300 Clay Street and 505 14th Street buildings, or via 11th Street just past Clay Street. To plan your trip to Alameda CTC visit www.511.org.

Accessibility

Public meetings at Alameda CTC are wheelchair accessible under the Americans with Disabilities Act. Guide and assistance dogs are welcome. Call 510-893-3347 (Voice) or 510-834-6754 (TTD) five days in advance to request a sign-language interpreter.



Meeting Schedule

The Alameda CTC meeting calendar lists all public meetings and is available at www.AlamedaCTC.org/events/upcoming/now.

Paperless Policy

On March 28, 2013, the Alameda CTC Commission approved the implementation of paperless meeting packet distribution. Hard copies are available by request only. Agendas and all accompanying staff reports are available electronically on the Alameda CTC website at www.AlamedaCTC.org/events/month/now.

Connect with Alameda CTC

www.AlamedaCTC.org



facebook.com/AlamedaCTC

[@AlamedaCTC](https://twitter.com/AlamedaCTC)

youtube.com/user/AlamedaCTC



I-680 Sunol Smart Carpool Lane Joint Powers Authority Meeting Agenda Monday, April 11, 2016, 9:30 a.m.

1111 Broadway, Suite 800, Oakland, CA 94607 • 510.208.7400 • www.AlamedaCTC.org
Teleconference location: Campbell City Hall, Doetsch Conference Room, 70 N. 1st St., Campbell, CA 95008

1. Pledge of Allegiance

Chair: Mayor Jerry Thorne, City of Pleasanton

Vice Chair: Bill Harrison, City of Fremont

Commissioners/Members: Scott Haggerty, David Haubert, Jason Baker (Santa Clara Valley Transportation Authority)

Staff Liaison: Kanda Raj

Executive Director: Arthur L. Dao

Clerk: Vanessa Lee

2. Roll Call

3. Public Comment

4. Consent Calendar

Page A/I

- 4.1. [Approval of the I-680 Sunol Smart Carpool Lane Joint Powers Authority March 14, 2016 Meeting Minutes](#)

1 A

5. Regular Matters

- 5.1. [I-680 Southbound Express Lane \(PN 1408.000\): Monthly Operations Update](#)

5 I

- 5.2. [I-680 Northbound Express Lane \(PN 1369.000\): Monthly Status Update](#)

15 I

6. Committee Member Reports (Verbal)

7. Staff Reports (Verbal)

8. Adjournment

Next Meeting: May 9, 2016

All items on the agenda are subject to action and/or change by the Commission.

This page intentionally left blank



I-680 Sunol Smart Carpool Lane Joint Powers Authority Meeting Minutes Monday, March 14, 2016, 9:30 a.m.

4.1

1111 Broadway, Suite 800, Oakland, CA 94607 • PH: (510) 208-7400 • www.AlamedaCTC.org

1. Pledge of Allegiance

2. Roll Call

A roll call was conducted. All members were present except Commissioner Haggerty and Commissioner Baker.

Subsequent to the roll call:
Commissioner Haggerty arrived during Item 5.2

3. Public Comment

There were no public comments.

4. Consent Calendar

4.1. Approval of the I-680 Sunol Smart Carpool Lane Joint Powers Authority February 8 2016 Meeting Minutes

Commissioner Harrison moved to approve the Consent Calendar. Commissioner Haubert seconded the motion. The motion passed with the following vote:

Yes:	Thorne, Haubert, Harrison
No:	None
Abstain:	None
Absent:	Baker, Haggerty

5. Regular Matters

5.1. I-680 Southbound Express Lane (PN 1408): Amend Existing Service Agreement with CHP: Approve Amendment No. 4 to Service Agreement 10R390000 with the California Highway Patrol to extend the term of the agreement for two additional years and an additional budget of \$425,000 for a total not-to exceed amount of \$1,650,000.

Kanda Raj recommended that the Commission approve Amendment No. 4 to Service Agreement 10R390000 with the California Highway Patrol to extend the term of the agreement for two additional years with an additional budget of \$425,000 for a total not-to exceed amount of \$1,650,000. Kanda stated that the current agreement expires on June 30, 2016, and an extension of this service agreement will ensure the continued coverage by the CHP necessary for the I-680 Southbound Express Lane operation. Approval of the requested action will encumber \$425,000 of toll funds over a two-year period, subject to the JPA's approval of the annual operating budgets. The necessary funds will be incorporated into the Alameda CTC FY 2016-17 and FY 2017-18 Annual Operating budget.

Commissioner Harrison asked if the northbound portion of the express lane was included in the contract amendment. Kanda stated that the contract amendment is only for the southbound portion of the lane.

Commissioner Harrison moved to approve this item. Commissioner Haubert seconded the motion. The motion passed with the following vote:

Yes:	Thorne, Haubert, Harrison
No:	None
Abstain:	None
Absent:	Baker, Haggerty

5.2. I-680 Southbound Express Lane (PN 1364.005): Monthly Operations Update

Elizabeth Rutman presented the I-680 Southbound Express Lane monthly operations update. She covered average daily volumes and average travel speeds in general purposes and express lanes, toll rates by segments as well as information on estimated versus forecasted revenue.

Commissioner Harrison asked if there was an increase in usage of the lane during the days that ACE Rail service was interrupted. Elizabeth stated that there was an increase in usage and staff could compile that data to present at the next meeting.

This item was for information only.

5.3. I-680 Northbound Express Lane (PN 1369.000): Monthly Status Update

Kanda Raj presented the I-680 Northbound Express Lane monthly status update. He stated that the final design is progressing in an expedited schedule with commencement of construction expected in mid-2017. Conversion of southbound express lane will be implemented simultaneously with the northbound project improvements. Staff has been coordinating the conversion with the City of Fremont and VTA staff.

Toll system integrator selection process is currently underway and the staff is expected to bring a draft contract for Commission's consideration in June 2016. Construction activities are expected to last two construction seasons and the express lanes will be opened to traffic in late 2018/early 2019.

This item was for information only.

6. Committee Member Reports

There were no committee member reports.

7. Staff Reports

Art Dao informed the Authority that the FAST ACT grant opportunity is being discussed at the State and Federal level. Caltrans is pursuing the grant to fund the last segment of the 14-mile I-680 corridor.

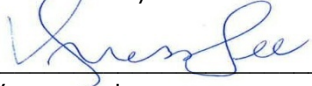
8. Adjournment/ Next Meeting

The next meeting is:

Date/Time: Monday, April 11, 2016 @ 9:30 a.m.

Location: Alameda CTC Offices, 1111 Broadway, Suite 800, Oakland, CA 94607

Attested by:



Vanessa Lee,
Clerk of the Commission

This page intentionally left blank



Memorandum

5.1

1111 Broadway, Suite 800, Oakland, CA 94607

• PH: (510) 208-7400

• www.AlamedaCTC.org

DATE: April 4, 2016

SUBJECT: I-680 Southbound Express Lane (PN 1408): Monthly Operations Update

RECOMMENDATION: Receive a status update on the operation of the I-680 Southbound Express Lane.

Summary

The purpose of this item is to provide the I-680 Sunol Smart Carpool Lane Joint Powers Authority ("Sunol JPA") with a Monthly Operation Update of the express lane facility for the month of February 2016. The update is included as Attachment A to this staff report.

The February 2016 operations reports indicate that the express lane facility continues to provide travel reliability during the peak period with average hourly speeds in the express lane estimated at 7 to 18 mph higher than the average hourly speeds in the general purposes lanes during the morning peak hours in the most congested segment of the corridor.

Background

The I-680 Southbound Express Lane facility spans over 14 miles from SR 84 near Pleasanton to SR 237 in the City of Milpitas. In addition to carpoolers who use the lane at no cost, it allows toll-paying solo drivers to benefit from optimized capacity, reduced congestion and increased travel time reliability. The Alameda CTC, acting as the managing agency for the Sunol JPA, has been operating the express lane facility since it opened to traffic in fall 2010.

An All Electronic Toll (AET) collection method has been employed to collect tolls. Toll rates are calculated based on real-time traffic conditions (speed and volume) in HOV/express and general purposes lanes. California Highway Patrol officers continued to provide enforcement services while Caltrans provides roadway maintenance services, through reimbursable service agreements.

February 2016 Operation Update: The February update is included as Attachment A to this report. During the peak commute hour, the motorists in the express lane traveled with speeds approximately 7 to 18 mph faster than the motorists traveling in the general purpose lanes in the most congested segment of the corridor. Motorists in the express lane

also experienced much less congestion than the general purpose lanes during commute hours. This is measured by the vehicle density, the number of vehicles per mile per lane. During the morning commute, the express lane average density was less than half that of the general purpose lanes in the most congested segment in the corridor.

The February 2016 average toll rate to travel the length of the corridor from Andrade Road to Calaveras Boulevard was \$1.82 during all hours of operation (5:00 a.m. – 8:00 p.m.) and \$4.24 within the peak morning commute hours, which are now realized as having extended to 7:00 am – 11:00 am.

Fiscal Impact: There is no fiscal impact.

Attachments

A. I-680 Southbound Express Lane February 2016 Operations Update

Staff Contact

[Kanda Raj](#), Express Lanes Program Manager

[Liz Rutman](#), Express Lanes Operation and Maintenance Manager



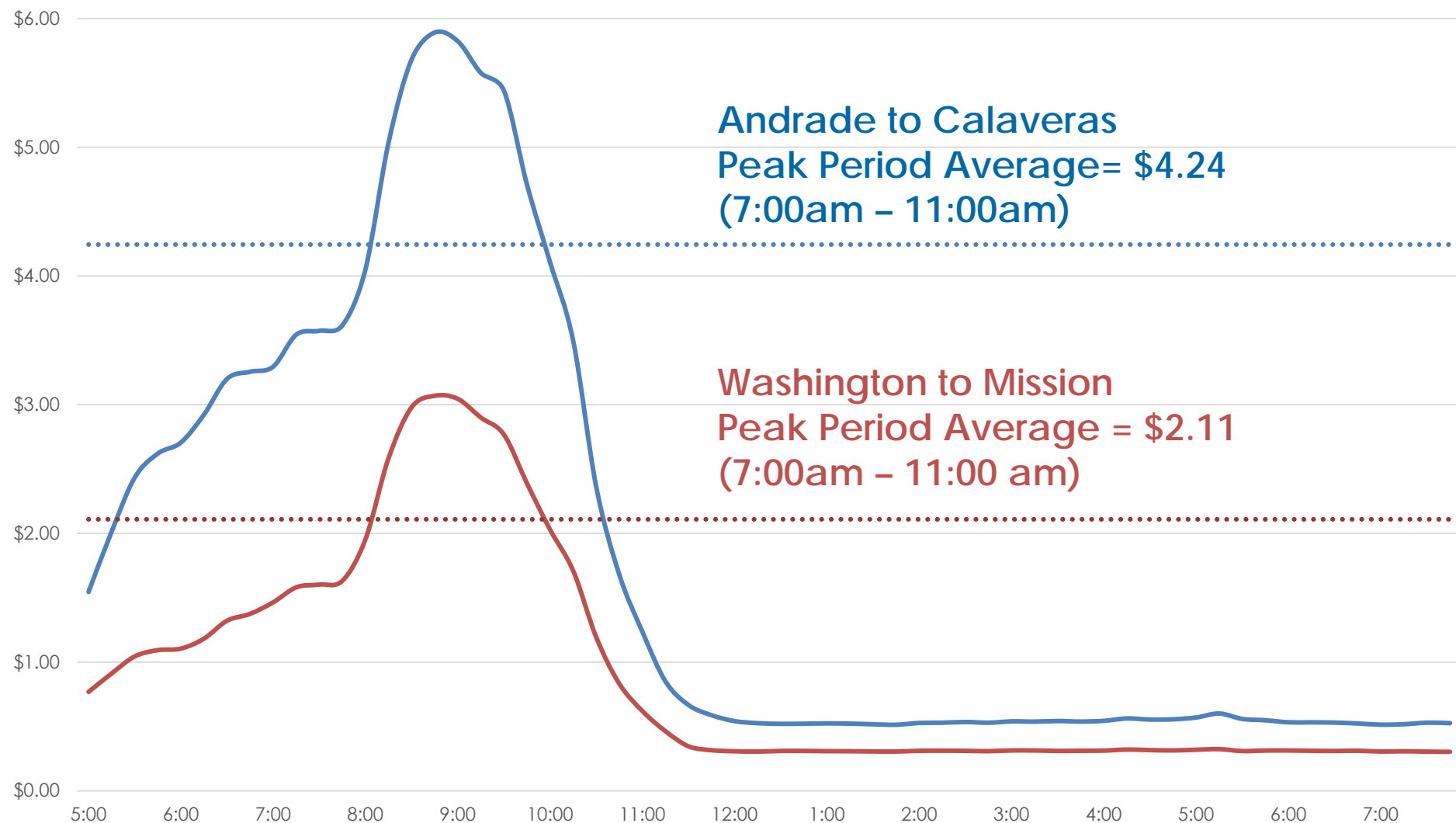
I-680 SB Express Lane Monthly Operations February 2016 Update

A Presentation for the
I-680 Sunol Smart Carpool Lane Joint Powers Authority (SSCLJPA)
April 11, 2016



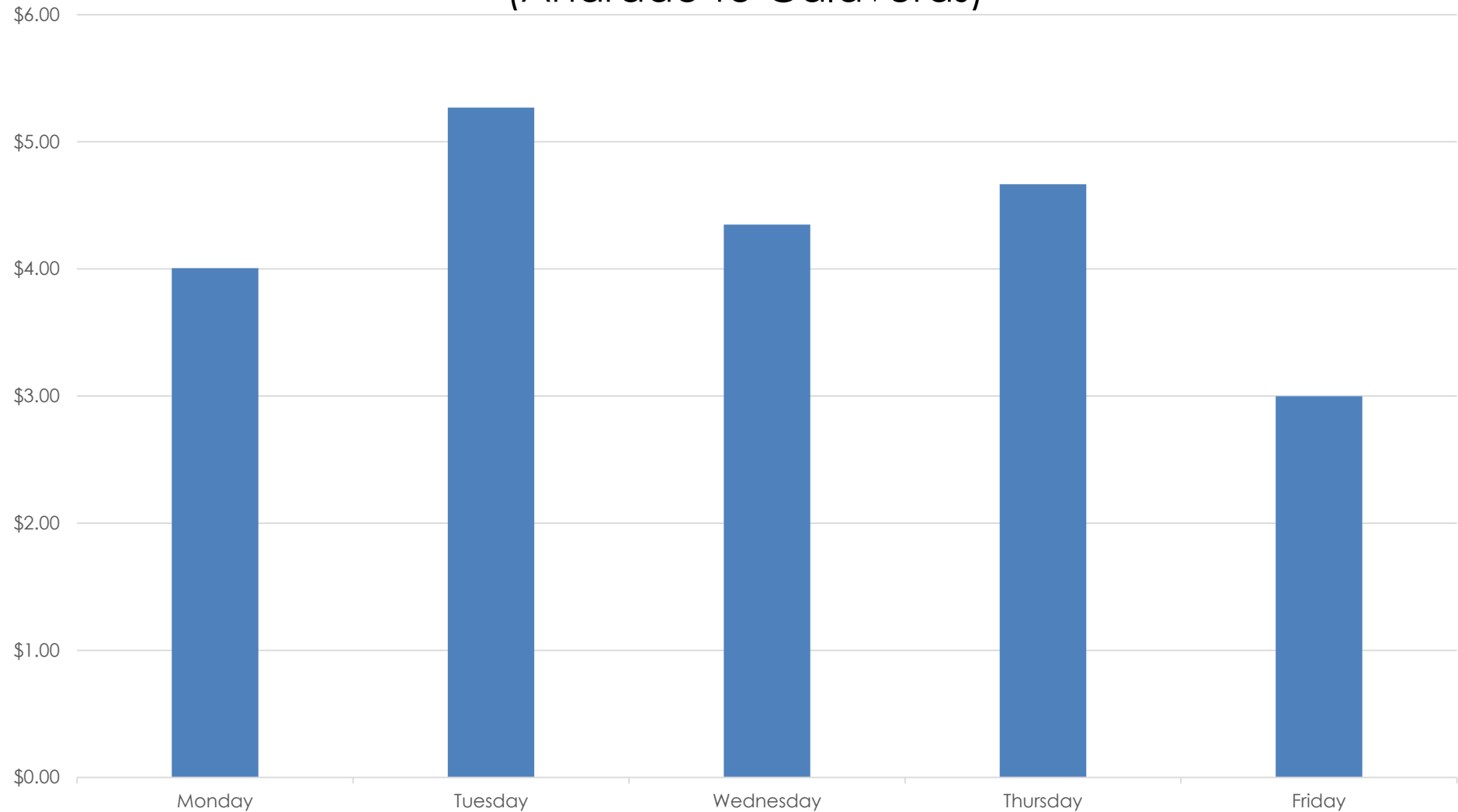
Average Toll Rates

By Segment – February 2016



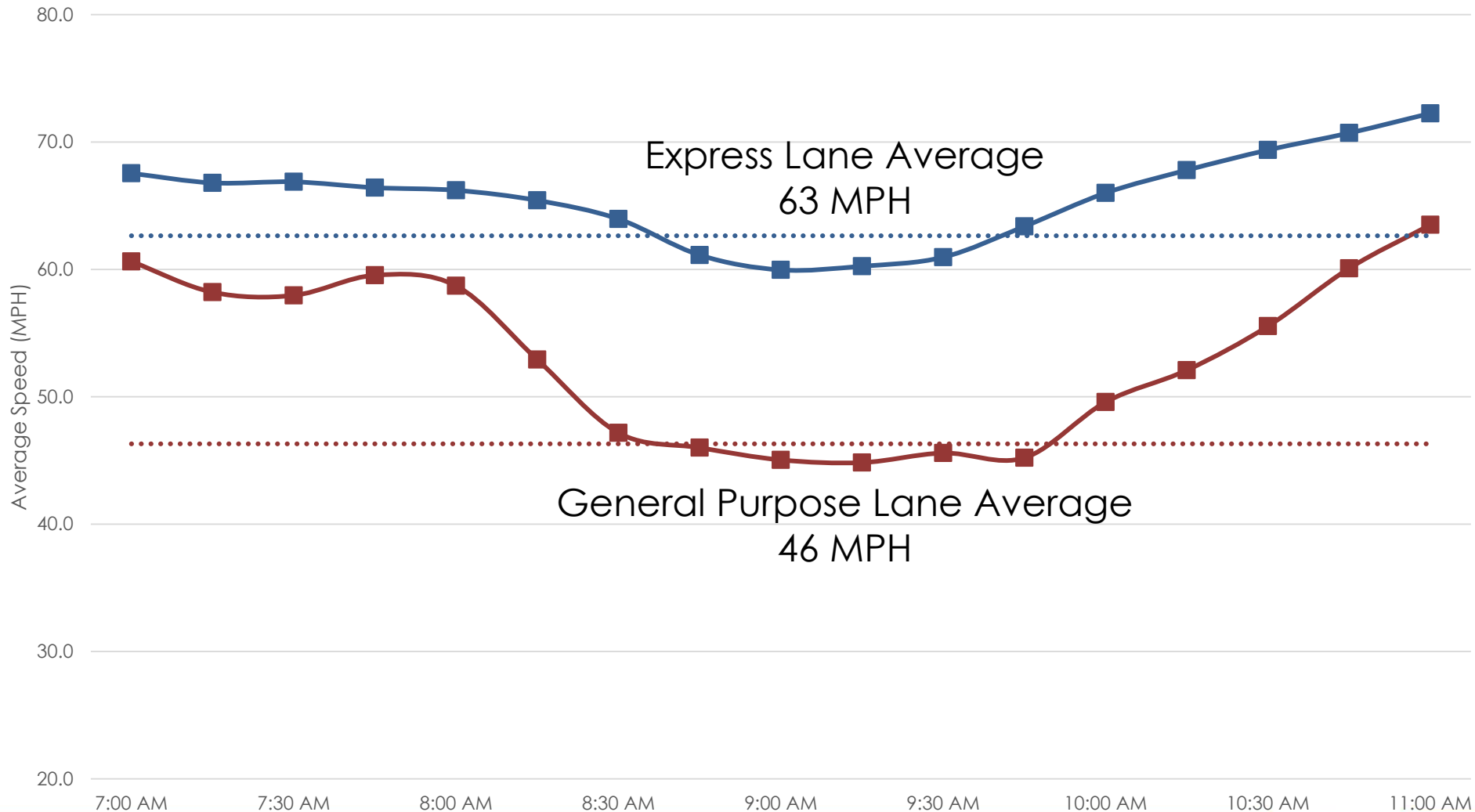
Average Toll Rates

By Day of Week – February 2016
(Andrade to Calaveras)



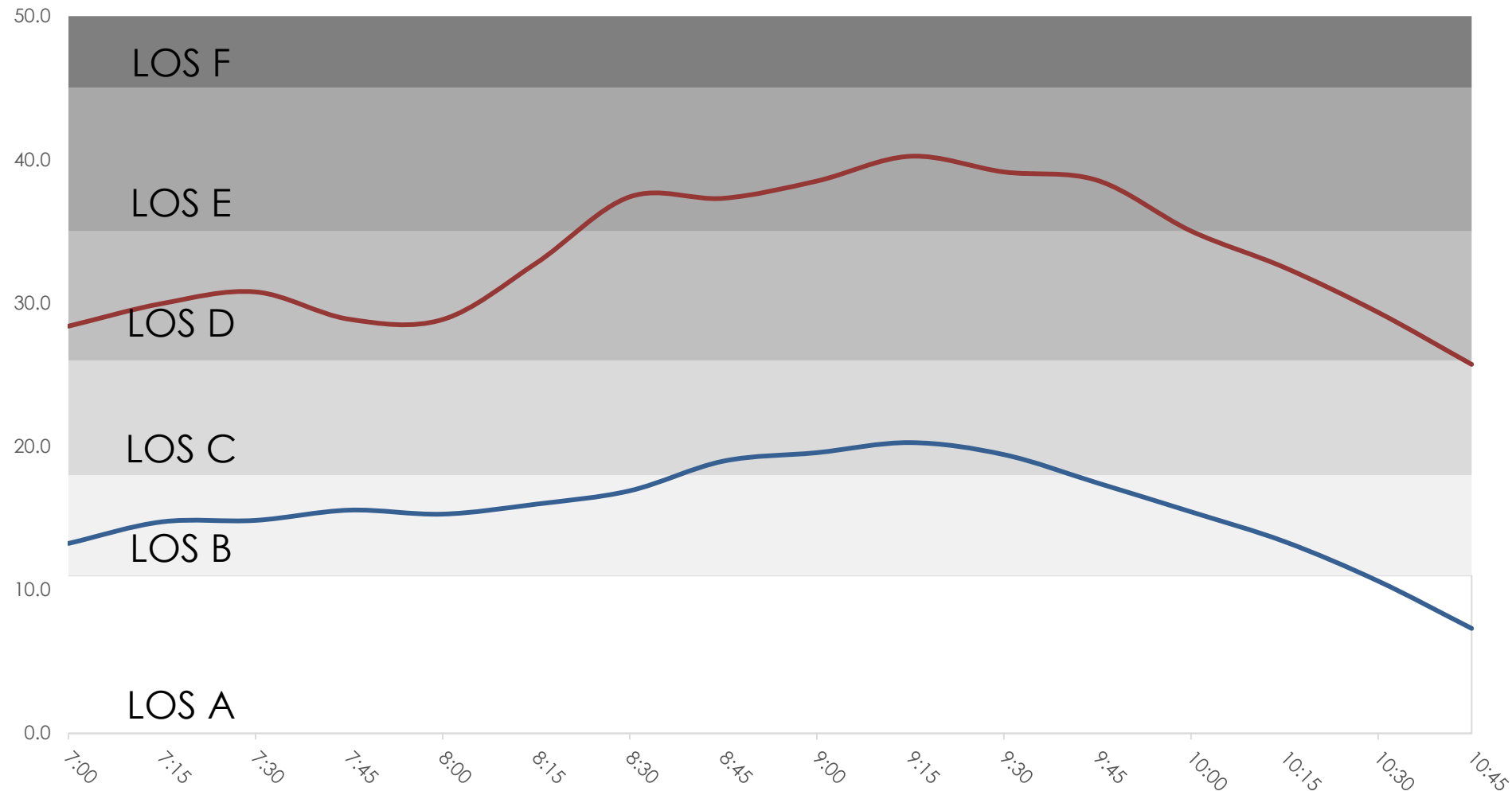
Average Travel Speed – Morning Commute

Central Segment (7:00am – 11:00am, Tues - Thurs)



Average Lane Density– Morning Commute

Central Segment (7:00am – 11:00am, Tues - Thurs)



Revenue - Estimated Gross vs. Forecasted

Cumulative Revenue in FY 2015/16
(July 2015 - February 2016)

Estimated Gross Revenue

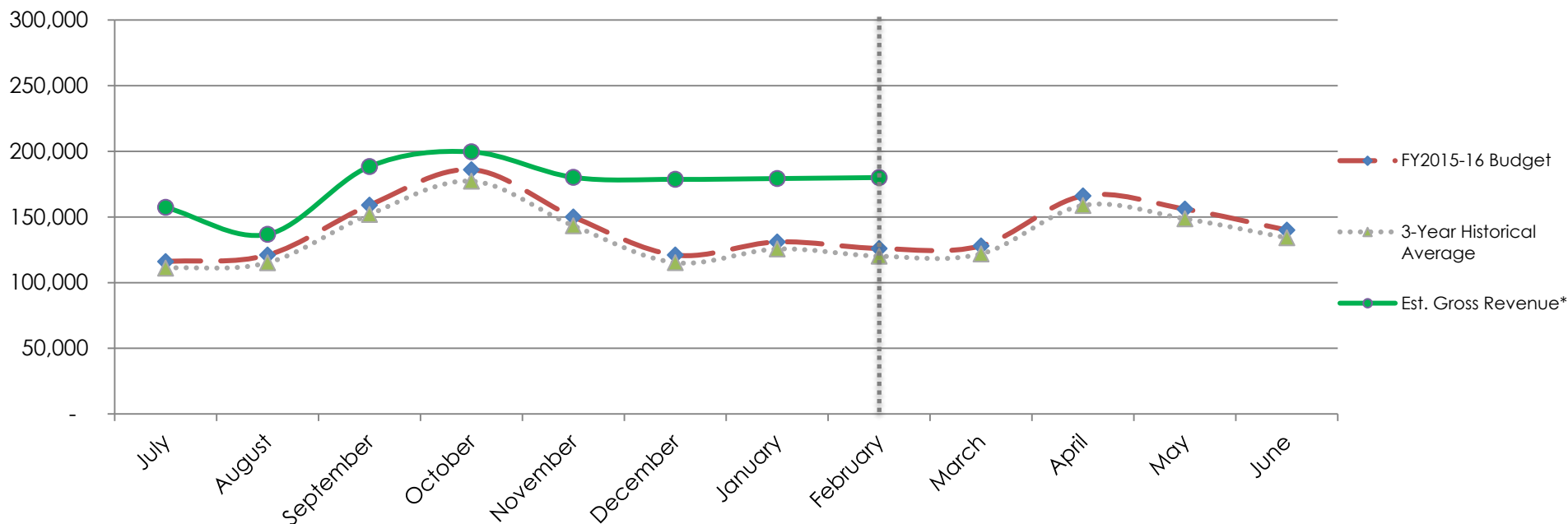
\$1,400,000

↑ 26%

Forecasted*

\$1,110,000

* Forecasted revenue for the full FY 15/16 is \$1,700,000





Questions ?

This page intentionally left blank



Memorandum

5.2

1111 Broadway, Suite 800, Oakland, CA 94607

PH: (510) 208-7400

www.AlamedaCTC.org

DATE: April 4, 2016

SUBJECT: I-680 Northbound Express Lane (PN 1369.000): Monthly Status Update

RECOMMENDATION: Receive a monthly status update of the I-680 Northbound Express Lane Project.

Summary

The I-680 Northbound Express Lane Project will widen I-680 from SR 237 in Santa Clara County to SR 84 in Alameda County and construct a northbound High Occupancy Vehicle (HOV)/Express Lane in the corridor. This overall project will be implemented with a phased approach. The initial phase, Phase 1 Modified, of the project will complete design and construction of a 9-mile segment between south of Auto Mall Parkway and SR84. The purpose of this item is to provide the Commission with a monthly status update of project development activities which are either completed or planned for the project.

Background

The I-680 Northbound Express Lane Project will widen I-680 from SR 237 in Santa Clara County to SR 84 in Alameda County to construct a 14 mile long northbound HOV/Express Lane in the corridor. The project is intended to provide a number of benefits including: 1) enhanced mobility by reducing traffic congestion; 2) reduced travel time and improved travel reliability; and 3) reduced congestion related accidents, thereby enhancing safety. The Express Lane facility will maximize available HOV lane capacity by offering solo drivers the choice to pay an electronic toll to access the lane, while regular carpool/carpool eligible users continue to use the lane at no cost.

Currently, there is heavy afternoon congestion on I-680 Northbound from Scotts Creek Boulevard to Andrade Road. Traffic studies have confirmed that this heavy congestion is caused by two bottleneck locations affecting northbound I-680 between SR 237 and SR 84 on weekday evening commutes between 2pm and 7pm. These bottleneck locations are: near Washington Boulevard and at the lane drop at the truck scales which is located between Sheridan Road and Andrade Road. The initial phase of construction, Phase 1 Modified, proposes to add a new HOV/Express Lane from south of Auto Mall Parkway to SR 84 to eliminate these bottleneck locations and alleviate much of the daily traffic congestion.

The Environmental Document and Project Approval (PA&ED) for the overall project was completed in July 2015. The civil detailed design work is underway. The interviews to

select a consultant/contractor to provide Toll System Integration services were conducted on January 20, 2016. Best and Final Offer negotiations have begun. Upon completing negotiations, staff will present a contract with a toll system integrator for approval in June 2016 Commission meeting. The following is a detailed discussion of work in progress and/or upcoming major tasks.

Environmental Document & Project Approval

The PA&ED was completed and approved in July 2015 for the overall project between SR237 and SR84.

Project Implementation Approach

The approved Environmental Document and Project Report include studies and analysis for construction of both the full project limits (SR 237 to SR 84) and an initial Phase 1 Modified project (south of Auto Mall Parkway to SR 84). Staff has developed a project delivery strategy to design and construct the Phase 1 Modified project based on immediate operational benefits and projected funding availability. In the interest of expediting important improvements for the public, Alameda CTC and Caltrans have agreed to incorporate a pavement rehabilitation project into the I-680 Northbound Express Lane Project - Phase 1 Modified Project.

Project activities anticipated over the next three months:

- Select the Toll System Integrator and execute contract
- Continue to finalize configuration of tolling zones and related sign locations
- Begin preliminary toll system design and coordinate with civil design
- Complete right of way engineering work to initiate right of way appraisal activities
- Complete structure type selection
- Complete field work to prepare foundation reports for bridge structures and retaining walls; development of pavement structural section recommendations; and soils investigation for potential presence of hazardous materials
- Initiate environmental revalidation process to reflect Phase 1A implementation
- Prepare and submit 65% Plans, Specification & Estimate package to Caltrans (June 2016)
- Execute a cooperative agreement for the I-680 SB Express Lane Access Configuration Conversion

The Phase 1A schedule is as follows:

- Complete Final Design (PS&E): December 2016
- Construction advertisement: March 2017
- Construction: mid 2017 - late 2018
- System Integration: mid 2018 - late 2018
- Lane opening: late 2018/early 2019

Alameda CTC, in partnership with Caltrans, is the implementing agency for preliminary engineering, environmental studies, design, right-of-way acquisition, and utility relocation.

Fiscal Impact: There is no significant fiscal impact. This is for information only.

Staff Contact

[Kanda Raj](#), Express Lanes Program Manager

[Gary Sidhu](#), Highway Program Manager

This page intentionally left blank