



Meeting Notice

1111 Broadway, Suite 800, Oakland, CA 94607

• 510.208.7400

• www.AlamedaCTC.org

Commission Chair
Vice Mayor Rebecca Kaplan,
City of Oakland

Commission Vice Chair
Mayor Bill Harrison,
City of Fremont

AC Transit
Director Elsa Ortiz

Alameda County
Supervisor Scott Haggerty, District 1
Supervisor Richard Valle, District 2
Supervisor Wilma Chan, District 3
Supervisor Nate Miley, District 4
Supervisor Keith Carson, District 5

BART
Director Rebecca Saltzman

City of Alameda
Mayor Trish Spencer

City of Albany
Mayor Peter Maass

City of Berkeley
Councilmember Laurie Capitelli

City of Dublin
Mayor David Haubert

City of Emeryville
Councilmember Ruth Atkin

City of Hayward
Mayor Barbara Halliday

City of Livermore
Mayor John Marchand

City of Newark
Councilmember Luis Freitas

City of Oakland
Councilmember Dan Kalb

City of Piedmont
Mayor Margaret Fujioka

City of Pleasanton
Mayor Jerry Thorne

City of San Leandro
Mayor Pauline Cutter

City of Union City
Mayor Carol Dutra-Vernaci

Executive Director
Arthur L. Dao

I-680 Sunol Smart Carpool Lane Joint Powers Authority

Monday, March 14, 2016, 9:30 a.m.

**1111 Broadway, Suite 800
Oakland, CA 94607**

Mission Statement

The mission of the Alameda County Transportation Commission (Alameda CTC) is to plan, fund, and deliver transportation programs and projects that expand access and improve mobility to foster a vibrant and livable Alameda County.

Public Comments

Public comments are limited to 3 minutes. Items not on the agenda are covered during the Public Comment section of the meeting, and items specific to an agenda item are covered during that agenda item discussion. If you wish to make a comment, fill out a speaker card, hand it to the clerk of the Commission, and wait until the chair calls your name. When you are summoned, come to the microphone and give your name and comment.

Recording of Public Meetings

The executive director or designee may designate one or more locations from which members of the public may broadcast, photograph, video record, or tape record open and public meetings without causing a distraction. If the Commission or any committee reasonably finds that noise, illumination, or obstruction of view related to these activities would persistently disrupt the proceedings, these activities must be discontinued or restricted as determined by the Commission or such committee (CA Government Code Sections 54953.5-54953.6).

Reminder

Please turn off your cell phones during the meeting. Please do not wear scented products so individuals with environmental sensitivities may attend the meeting.

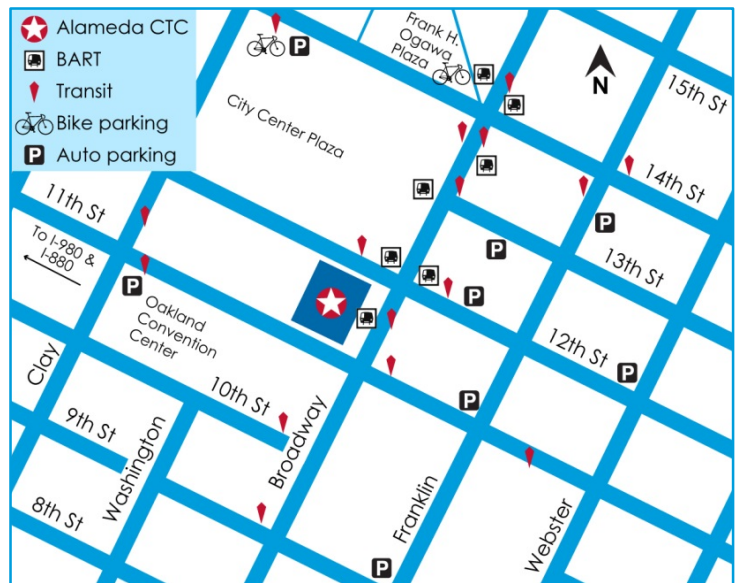
Glossary of Acronyms

A glossary that includes frequently used acronyms is available on the Alameda CTC website at www.AlamedaCTC.org/app_pages/view/8081.

Location Map

★ Alameda CTC
1111 Broadway, Suite 800
Oakland, CA 94607

Alameda CTC is accessible by multiple transportation modes. The office is conveniently located near the 12th Street/City Center BART station and many AC Transit bus lines. Bicycle parking is available on the street and in the BART station as well as in electronic lockers at 14th Street and Broadway near Frank Ogawa Plaza (requires purchase of key card from bikelink.org).



Garage parking is located beneath City Center, accessible via entrances on 14th Street between 1300 Clay Street and 505 14th Street buildings, or via 11th Street just past Clay Street. To plan your trip to Alameda CTC visit www.511.org.

Accessibility

Public meetings at Alameda CTC are wheelchair accessible under the Americans with Disabilities Act. Guide and assistance dogs are welcome. Call 510-893-3347 (Voice) or 510-834-6754 (TTD) five days in advance to request a sign-language interpreter.



Meeting Schedule

The Alameda CTC meeting calendar lists all public meetings and is available at www.AlamedaCTC.org/events/upcoming/now.

Paperless Policy

On March 28, 2013, the Alameda CTC Commission approved the implementation of paperless meeting packet distribution. Hard copies are available by request only. Agendas and all accompanying staff reports are available electronically on the Alameda CTC website at www.AlamedaCTC.org/events/month/now.

Connect with Alameda CTC

www.AlamedaCTC.org



facebook.com/AlamedaCTC

[@AlamedaCTC](https://twitter.com/AlamedaCTC)

youtube.com/user/AlamedaCTC



I-680 Sunol Smart Carpool Lane Joint Powers Authority Meeting Agenda Monday, March 14, 2016, 9:30 a.m.

1111 Broadway, Suite 800, Oakland, CA 94607

PH: (510) 208-7400

www.AlamedaCTC.org

1. Pledge of Allegiance

2. Roll Call

3. Public Comment

Chair: Mayor Jerry Thorne, City of Pleasanton

Vice Chair: Bill Harrison, City of Fremont

Commissioners/Members: Scott Haggerty, David Haubert, Jason Baker (Santa Clara Valley Transportation Authority),

Staff Liaison: Kanda Raj

Executive Director: Arthur L. Dao

Clerk: Vanessa Lee

4. Consent Calendar

Page A/I

4.1. [Approval of the I-680 Sunol Smart Carpool Lane Joint Powers Authority February 8, 2016 Meeting Minutes](#)

1 A

5. Regular Matters

5.1. [I-680 Southbound Express Lane \(PN 1408\): Amend Existing Service Agreement with CHP: Approve Amendment No. 4 to Service Agreement 10R390000 with the California Highway Patrol to extend the term of the agreement for two additional years and an additional budget of \\$425,000 for a total not-to exceed amount of \\$1,650,000.](#)

3 A

5.2. [I-680 Southbound Express Lane \(PN 1408\): Monthly Operations Update](#)

7 I

5.3. [I-680 Northbound Express Lane \(PN 1369.000\): Monthly Status Update](#)

15 I

6. Committee Member Reports (Verbal)

7. Staff Reports (Verbal)

8. Adjournment

Next Meeting: April 11, 2016

All items on the agenda are subject to action and/or change by the Commission.

This page intentionally left blank



I-680 Sunol Smart Carpool Lane
Joint Powers Authority Meeting Minutes
Monday, February 8, 2016, 9:30 a.m.

4.1

1111 Broadway, Suite 800, Oakland, CA 94607 • PH: (510) 208-7400 • www.AlamedaCTC.org

1. Pledge of Allegiance

2. Roll Call

A roll call was conducted. All members were present except Commissioner Baker.

3. Public Comment

There were no public comments.

4. Consent Calendar

4.1. Approval of the I-680 Sunol Smart Carpool Lane Joint Powers Authority January 11, 2016 Meeting Minutes

Commissioner Harrison moved to approve the Consent Calendar. Commissioner Haubert seconded the motion. The motion passed with the following vote:

Yes:	Thorne, Haubert, Haggerty, Harrison
No:	None
Abstain:	None
Absent:	Baker

5. Regular Matters

5.1. Sunol Smart Carpool Lane Statement of Revenues and Expenses Approval of Statement of Revenues and Expenses as of December 31, 2015

Patricia Reavey recommended that the Authority approve the statement of Revenues and Expenses as of December 31, 2015. She stated that the Authority is in a strong position compared to budget after the second quarter of the fiscal year and remains sustainable. Patricia stated that net toll revenue was \$1,014,069 or 19.3 percent higher than projected toll revenue through the second quarter of FY2015-16. Expenses through the second quarter totaled \$933,534, or 27.1 percent less than budget, which results in an increase to net position of \$81,922.

Commissioner Haubert moved to approve this item. Commissioner Harrison seconded the motion. The motion passed with the following vote:

Yes:	Thorne, Haubert, Haggerty, Harrison
No:	None
Abstain:	None
Absent:	Baker

5.2. I-680 Southbound Express Lane (PN 1364.005): Monthly Operations Update

Elizabeth Rutman presented the I-680 Southbound Express Lane monthly operations update. She covered average daily volumes and average travel speeds in general

purposes and express lanes, toll rates by segments as well as information on estimated versus forecasted revenue. Elizabeth concluded her report by providing a comparison of traffic volumes on Christmas Eve, Christmas Day, and average daily volumes during the month of December 2015, and highlighting changes in toll rates across three fiscal years.

Commissioner Haubert asked if staff is monitoring and collecting data for segments of the freeway that are in the corridor but are outside of the express lane. Art stated that data outside the express lane is not being captured or monitored.

This item was for information only.

5.3. I-680 Northbound Express Lane (PN 1369.000): Monthly Status Update

Kanda Raj presented the I-680 Northbound Express Lane monthly status update. He stated that the final design is progressing in an expedited schedule with commencement of construction expected in mid-2017. Conversion of southbound express lane will be implemented simultaneously with the northbound project improvements. Staff has been coordinating the conversion with the City of Fremont and VTA staff.

Toll system integrator selection process is currently underway and the staff is expected to bring a draft construct for Commission's consideration in May 2016. Construction activities are expected to last two construction seasons and the express lanes will be opened to traffic in late 2018/early 2019.

This item was for information only.

6. Committee Member Reports

There were no committee member reports.

7. Staff Reports

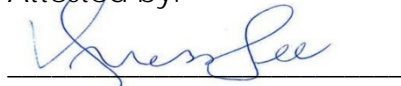
8. Adjournment/ Next Meeting

The next meeting is:

Date/Time: Monday, March 14, 2016 @ 9:30 a.m.

Location: Alameda CTC Offices, 1111 Broadway, Suite 800, Oakland, CA 94607

Attested by:



Vanessa Lee,
Clerk of the Commission



Memorandum

5.1

1111 Broadway, Suite 800, Oakland, CA 94607

• PH: (510) 208-7400

• www.AlamedaCTC.org

DATE: March 7, 2016

SUBJECT: I-680 Southbound Express Lane (PN 1408): Amend Existing Service Agreement with CHP

RECOMMENDATION: Approve Amendment No. 4 to Service Agreement 10R390000 with the California Highway Patrol to extend the term of the agreement for two additional years and an additional budget of \$425,000 for a total not-to exceed amount of \$1,650,000.

Summary

The Alameda CTC, acting as the managing agency of the JPA, operates and maintains the I-680 Southbound Express Lane to provide travel time savings and travel reliability for the traveling public. The JPA maintains an agreement with the California Highway Patrol (CHP) to provide the necessary patrol and enforcement services that are an essential element of maintaining optimal operations on the Express Lane. The current agreement expires on June 30, 2016, and an extension of this service agreement will ensure continued coverage by the CHP necessary for the I-680 Southbound Express Lane operation.

Background

Pursuant the California Streets and Highway Code Section 149.5, which authorizes agreements between the Commission and the Department of the California Highway Patrol (CHP) to identify procedures for enforcement by the CHP to prohibit unauthorized use of the express lanes, and to reimburse this state agency for the enforcement activities.. On a regular basis, the CHP officers are present in the corridor to pullover suspected toll violators in addition to enforcing overall traffic safety. It is necessary to continue CHP-provided enforcement services at the current levels until alternative violation enforcement strategies are implemented. Various enforcement techniques and strategies are continuously being evaluated, including evaluation of the enhanced enforcement currently implemented on the I-580 express lanes.

The original agreement between the JPA and the CHP was signed in August 2010 for traffic control services for patrol and enforcement of the facility, in the amount of \$368,653. Subsequently, the Agreement was amended as outlined in Attachment A, Summary of Agreement No. 10R390000. The current agreement expires on June 30, 2016, and an extension of this service agreement will ensure continued coverage by the CHP necessary for the I-680 Southbound Express Lane operation.

Staff recommends that the JPA Members authorize the Executive Director to execute Amendment No. 4 to the Agreement No. 10R390000 with the CHP to extend the term of the Agreement to June 30, 2018 and include additional compensation of \$425,000, for a revised not-to exceed amount of \$1,650,000.

Fiscal Impact: Approval of the requested action will encumber \$425,000 of toll funds over a two-year period, subject to the JPA's approval of the annual operating budgets. The necessary funds will be incorporated into the Alameda CTC FY 2016-17 and FY 2017-18 Annual Operating Budgets.

Attachments

A. Summary of Agreement No. 10R390000

Staff Contact

[Kanda Raj](#), Express Lanes Program Manager

[Liz Rutman](#), Express Lanes Operation and Maintenance Manager

Summary of Agreement No. 10R390000			
Agreement Status	Work Description	Value	Total Not-to-Exceed Value
Original Agreement August 2010	traffic control services for patrol and enforcement of the facility	\$368,653	\$368,653
Amendment No. 1 June 2011	traffic control services for patrol and enforcement of the facility (1 year extension)	\$106,347	\$475,000
Amendment No. 2 June 2012	traffic control services for patrol and enforcement of the facility (2 year extension)	\$350,000	\$825,000
Amendment No. 3 June 2014	traffic control services for patrol and enforcement of the facility (2 year extension)	\$400,000	\$1,225,000
<i>Proposed Amendment No. 4 June 2016</i>	<i>traffic control services for patrol and enforcement of the facility (2 year extension)</i>	<i>\$425,000</i>	<i>\$1,650,000</i>
Total Amended Agreement Not-to-Exceed Amount			\$1,650,000

This page intentionally left blank



Memorandum

5.2

1111 Broadway, Suite 800, Oakland, CA 94607

• PH: (510) 208-7400

• www.AlamedaCTC.org

DATE: March 7, 2016

SUBJECT: I-680 Southbound Express Lane (PN 1408): Monthly Operations Update

RECOMMENDATION: Receive a status update on the operation of the I-680 Southbound Express Lane.

Summary

The purpose of this item is to provide the I-680 Sunol Smart Carpool Lane Joint Powers Authority ("Sunol JPA") with a Monthly Operation Update of the express lane facility for the month of January 2016. The update is included as Attachment A to this staff report.

The January 2016 operation reports indicate that the express lane facility continues to provide travel reliability during the peak period, as average hourly speeds in the express lane are estimated at 9 to 15 mph higher than the average hourly speeds in the general purposes lanes during the morning peak hours.

Comparison of performance metrics demonstrates that the average daily HOV/express lane usage continues to increase, including usage by toll paying motorists. This is an indication that more and more patrons continue to choose to utilize the express lane to experience travel reliability and time savings.

Background

The I-680 Southbound Express Lane facility spans over 14 miles from SR 84 near Pleasanton to SR 237 in the City of Milpitas. The facility was opened in September 2010 and is the first operational express lane in Northern California. In addition to carpoolers who use the lane at no cost, it allows toll-paying solo drivers to benefit from optimized capacity, reduced congestion and increased travel time reliability. Constructed within the restricted right-of-way, the facility has no physical barrier between the general purpose lanes and the express lane, but is separated by a double white stripe. The Alameda CTC, acting as the managing agency for the Sunol JPA, has been operating the express lane facility since it opened to traffic in fall 2010.

An All Electronic Toll (AET) collection method has been employed to collect tolls. Toll are collected via FasTrak® transponders (also known as FasTrak® toll tags), issued by Bay Area Toll Authority and are automatically read by readers mounted on overhead gantries. Toll

rates are calculated based on real-time traffic conditions (speed and volume) in HOV/express and general purposes lanes. The accounts of vehicles passing through with valid FasTrak® transponders are charged the appropriate toll for the length of their trip, based on the toll rates published via dynamic message signs. California Highway Patrol officers continued to provide enforcement services while Caltrans provides roadway maintenance services, through reimbursable service agreements.

The facility is equipped to read the newly introduced FasTrak® flex toll tags. When the toll tag is set at 2 or 3, the toll readers located on I-680 Southbound will read them and allow the carpool users to continue to use the lane at no cost. Solo drivers can set their FasTrak® Flex to 1 to pay a toll to use the lane. FasTrak® flex toll tags are not yet required for carpoolers on I-680 Southbound Express Lane, but will be required on the forthcoming I-580 Express Lanes in the Tri-Valley, and on the new I-680 Express Lanes between Walnut Creek and San Ramon in Contra Cost County.

January 2016 Operation Update: The January update is included as Attachment A to this report. During the peak commute hour, the motorists in the express lane, including the carpool users, traveled with speeds approximately 9 to 15 mph faster than the motorists traveling in the general purpose lanes. In addition, vehicle speeds observed in the HOV/express Lane during the commute hours indicate that the use of the lane by solo toll paying and clean air vehicle drivers did not degrade the level of service in the lane and/or impede the benefits of carpooling.

The year over year comparison indicates a 10 percent increase in HOV/express Lane usage for the month of January. The January 2016 average toll rate to travel the length of the corridor from Andrade Road to Calaveras Boulevard was \$1.81 during all hours of operation (5:00 a.m. – 8:00 p.m.) and \$4.60 within the peak morning commute hours (7:00 am – 10:00 am).

Fiscal Impact: There is no fiscal impact.

Attachments

A. I-680 Southbound Express Lane January 2016 Operation Update

Staff Contact

[Kanda Raj](#), Express Lanes Program Manager

[Liz Rutman](#), Express Lanes Operation and Maintenance Manager



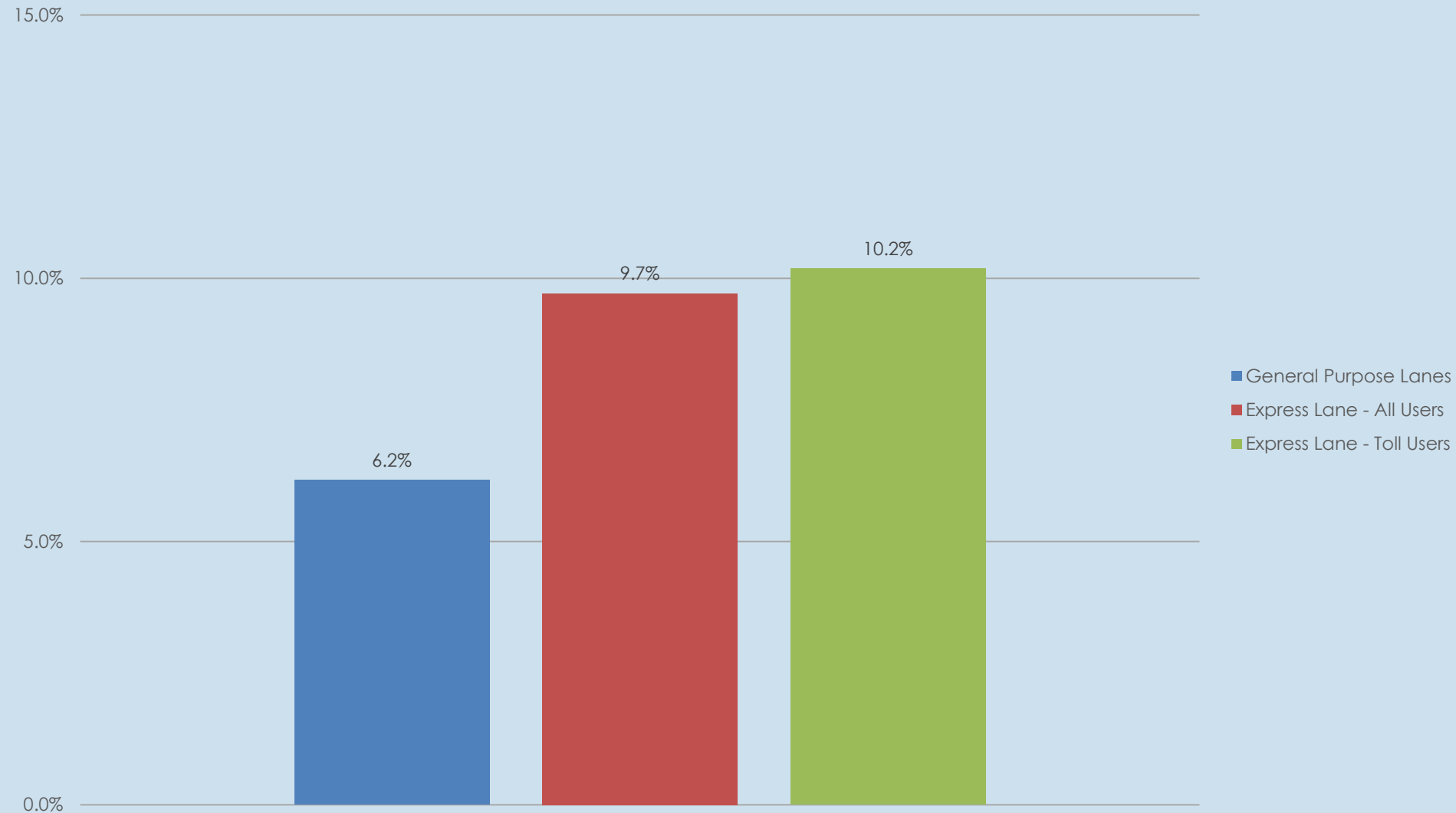
I-680 SB Express Lane Monthly Operations January 2016 Update

A Presentation for the
I-680 Sunol Smart Carpool Lane Joint Powers Authority (SSCLJPA)
March 14, 2016



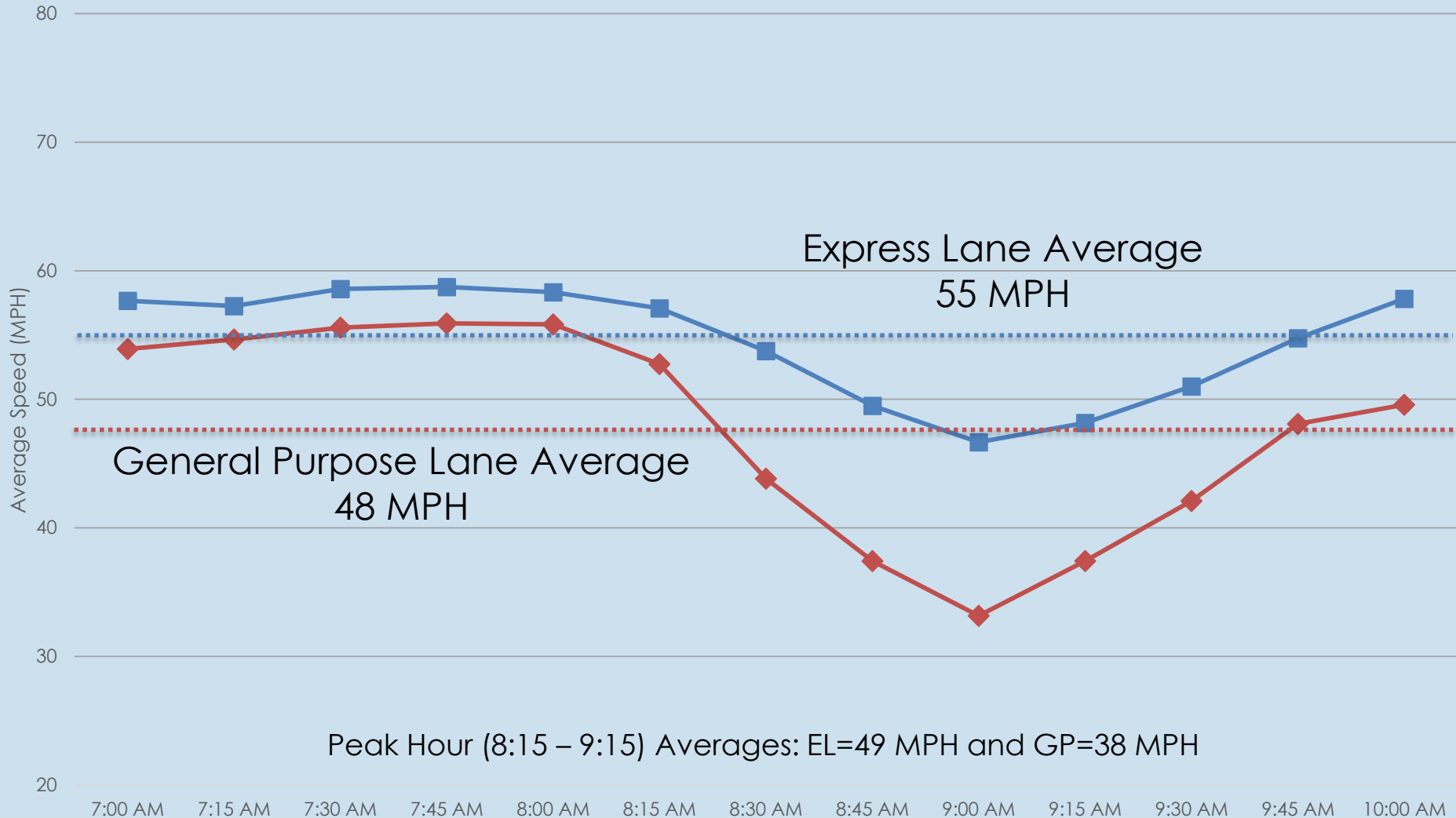
Average Daily Volumes

Percent Change – January 2015 vs. 2016



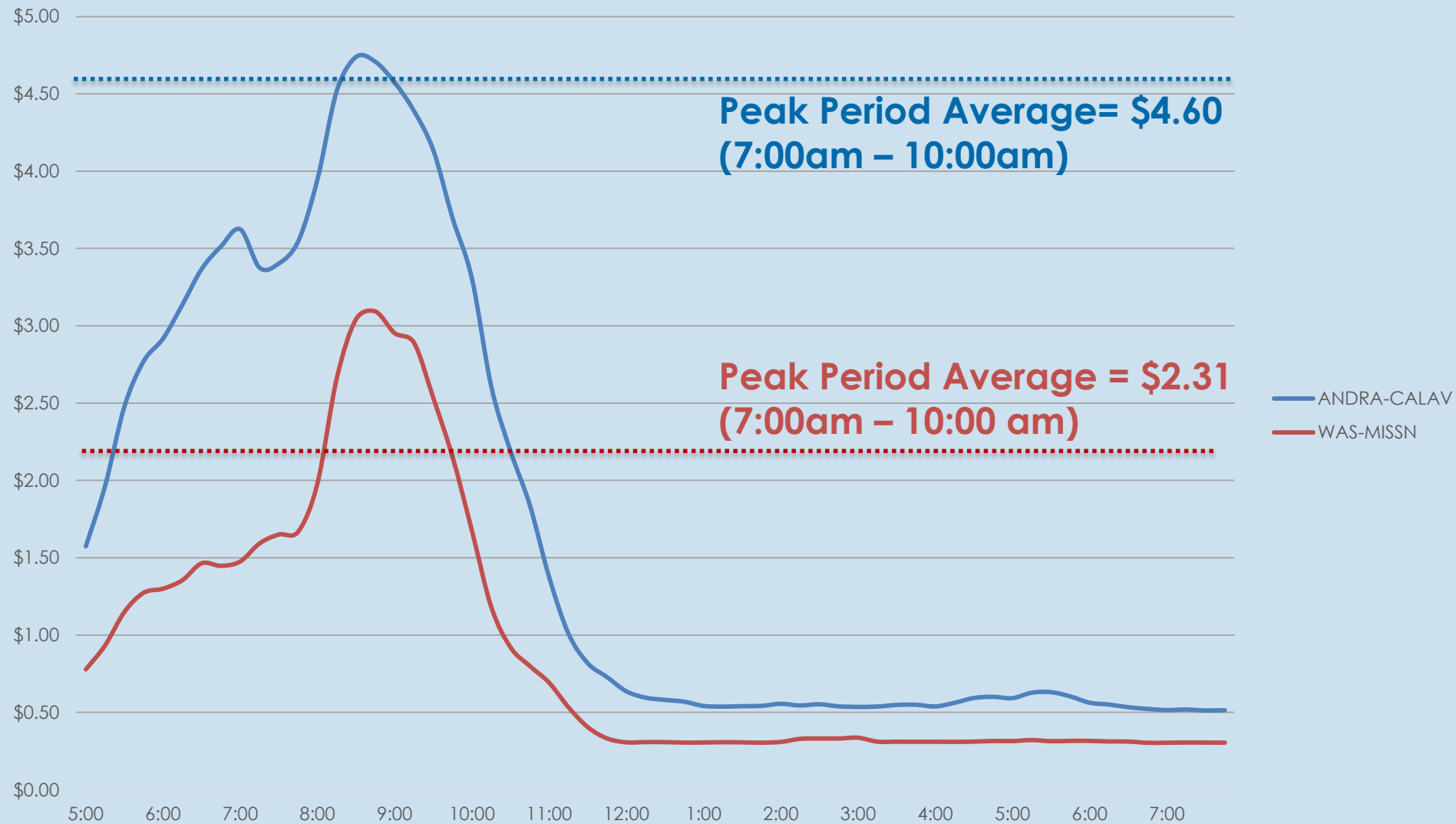
Average Travel Speed - During Peak Period

Central Segment (7:00am – 10:00am, Tues - Thurs)



Average Toll Rates

By Segment – January 2016



Revenue - Estimated Gross vs. Forecasted

Cumulative Revenue in FY 2015/16
(July 2015 - January 2016)

Estimated Gross Revenue

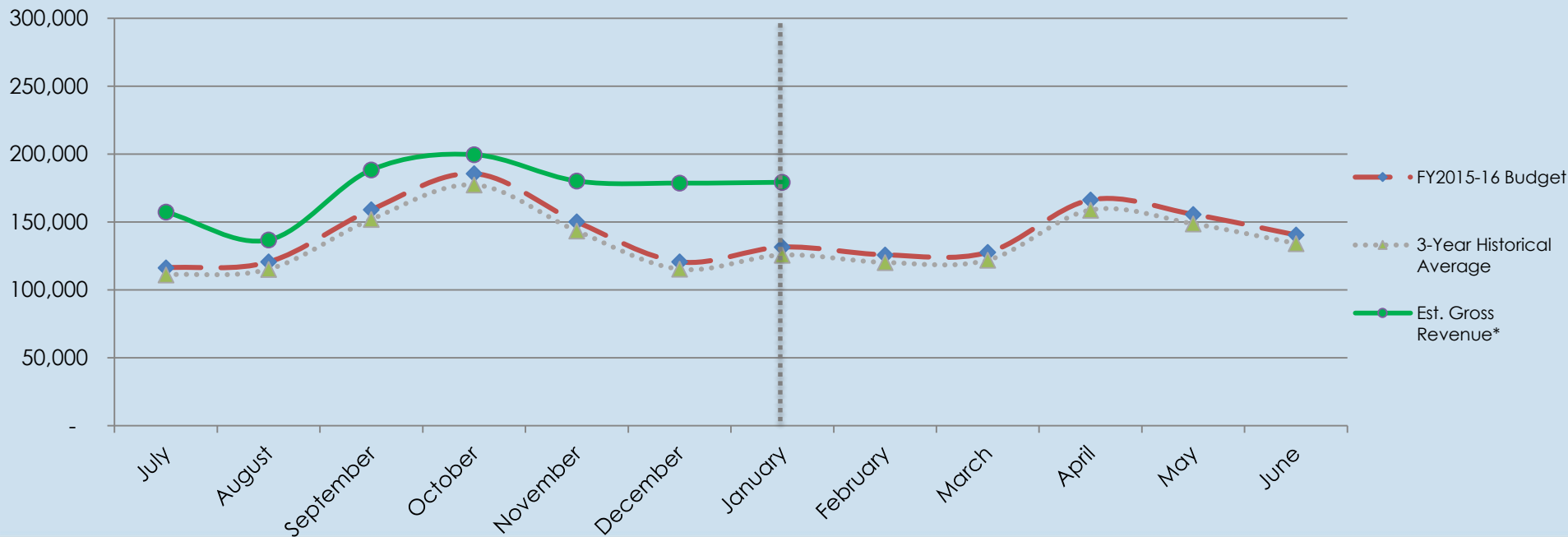
\$1,220,202

 **24%**

Forecasted*

\$984,079

* Forecasted revenue for the full FY 15/16 is \$1,700,000





Questions ?



Memorandum

5.3

1111 Broadway, Suite 800, Oakland, CA 94607

PH: (510) 208-7400

www.AlamedaCTC.org

DATE: March 7, 2016

SUBJECT: I-680 Northbound Express Lane (PN 1369.000): Monthly Status Update

RECOMMENDATION: Receive a monthly status update of the I-680 Northbound Express Lane Project.

Summary

The I-680 Northbound Express Lane Project will widen I-680 from SR 237 in Santa Clara County to SR 84 in Alameda County and construct a northbound High Occupancy Vehicle (HOV)/Express Lane in the corridor. This overall project will be implemented with a phased approach. The initial phase, Phase 1 Modified, of the project will complete design and construction of a 9-mile segment between south of Auto Mall Parkway and SR84. The purpose of this item is to provide the Commission with a monthly status update of project development activities which are either completed or planned for the project.

Background

The I-680 Northbound Express Lane Project will widen I-680 from SR 237 in Santa Clara County to SR 84 in Alameda County to construct a 14 mile long northbound HOV/Express Lane in the corridor. The project is intended to provide a number of benefits including: 1) enhanced mobility by reducing traffic congestion; 2) reduced travel time and improved travel reliability; and 3) reduced congestion related accidents, thereby enhancing safety. The Express Lane facility will maximize available HOV lane capacity by offering solo drivers the choice to pay an electronic toll to access the lane, while regular carpool/carpool eligible users continue to use the lane at no cost.

Currently, there is heavy afternoon congestion on I-680 Northbound from Scotts Creek Boulevard to Andrade Road. Traffic studies have confirmed that this heavy congestion is caused by two bottleneck locations affecting northbound I-680 between SR 237 and SR 84 on weekday evening commutes between 2pm and 7pm. These bottleneck locations are: near Washington Boulevard and at the lane drop at the truck scales which is located between Sheridan Road and Andrade Road. The initial phase of construction, Phase 1 Modified, proposes to add a new HOV/Express Lane from south of Auto Mall Parkway to SR 84 to eliminate these bottleneck locations and alleviate much of the daily traffic congestion.

The Environmental Document and Project Approval (PA&ED) for the overall project was completed in July 2015. The civil detailed design work is underway. The interviews to

select a consultant/contractor to provide Toll System Integration services were conducted on January 20, 2016. Best and Final Offer negotiations have begun. Upon completing negotiations, staff will present a contract with a toll system integrator for approval in May 2016 Commission meeting. The following is a detailed discussion of work in progress and/or upcoming major tasks.

Environmental Document & Project Approval

The PA&ED was completed and approved in July 2015 for the overall project between SR237 and SR84.

Project Implementation Approach

The approved Environmental Document and Project Report include studies and analysis for construction of both the full project limits (SR 237 to SR 84) and an initial Phase 1 Modified project (south of Auto Mall Parkway to SR 84). Staff has developed a project delivery strategy to design and construct the Phase 1 Modified project based on immediate operational benefits and projected funding availability. In the interest of expediting important improvements for the public, Alameda CTC and Caltrans have agreed to incorporate a pavement rehabilitation project into the I-680 Northbound Express Lane Project - Phase 1 Modified Project.

Project activities anticipated over the next three months:

- Select the Toll System Integrator and execute contract
- Coordinate draft configuration of tolling zones and related sign locations
- Begin preliminary toll system design and coordinate with civil design
- Complete right of way engineering work to initiate right of way appraisal activities
- Final approval of geometric design features and associated design exceptions
- Complete structure type selection
- Complete field work to prepare foundation reports for bridge structures and retaining walls; development of pavement structural section recommendations; and soils investigation for potential presence of hazardous materials
- Initiate environmental revalidation process to reflect Phase 1A implementation
- Prepare and submit 65% Plans, Specification & Estimate package to Caltrans (June 2016)
- Execute a cooperative agreement for the I-680 SB Express Lane Access Configuration Conversion

The Phase 1A schedule is as follows:

- Complete Final Design (PS&E): December 2016
- Construction advertisement: March 2017
- Construction: mid 2017 - late 2018
- System Integration: mid 2018 - late 2018
- Lane opening: late 2018/early 2019

Alameda CTC, in partnership with Caltrans, is the implementing agency for preliminary engineering, environmental studies, design, right-of-way acquisition, and utility relocation.

Fiscal Impact: There is no significant fiscal impact. This is for information only.

Staff Contact

[Kanda Raj](#), Express Lanes Program Manager

[Gary Sidhu](#), Highway Program Manager

This page intentionally left blank