



**I-680 SUNOL SMART CARPOOL LANE
JOINT POWERS AUTHORITY**

MEETING NOTICE

Monday, January 9, 2012, 9:30 am
1333 Broadway, Suite 300, Oakland, California 94612
(see map on last page of agenda)

Commission Chair

Mark Green, Mayor – Union City

Commission Vice Chair

Scott Haggerty, Supervisor – District 1

AC Transit

Greg Harper, Director

Alameda County

Supervisors

Nadia Lockyer – District 2

Wilma Chan – District 3

Nate Miley – District 4

Keith Carson – District 5

BART

Thomas Blalock, Director

City of Alameda

Rob Bonta, Vice Mayor

City of Albany

Farid Javandel, Mayor

City of Berkeley

Laurie Capitelli, Councilmember

City of Dublin

Tim Sbranti, Mayor

City of Emeryville

Ruth Atkin, Councilmember

City of Fremont

Suzanne Chan, Vice Mayor

City of Hayward

Olden Henson, Councilmember

City of Livermore

John Marchand, Mayor

City of Newark

Luis Freitas, Vice Mayor

City of Oakland

Councilmembers

Larry Reid

Rebecca Kaplan

City of Piedmont

John Chiang, Vice Mayor

City of Pleasanton

Jennifer Hosterman, Mayor

City of San Leandro

Joyce R. Starosciak, Councilmember

Executive Director

Arthur L. Dao

Chair:

Scott Haggerty -- Alameda CTC

Vice Chair:

Bill Harrison -- Alameda CTC

Members:

Mark Green -- Alameda CTC

Jennifer Hosterman -- Alameda CTC

Pete McHugh -- Santa Clara VTA

Staff Liaison:

Stewart D. Ng

Executive Director:

Arthur L. Dao

Secretary:

Christina Ramos

AGENDA

*Copies of Individual Agenda Items are Available on the:
Alameda CTC Website -- www.AlamedaCTC.org*

1 PLEDGE OF ALLEGIANCE

2 ROLL CALL

3 PUBLIC COMMENT

Members of the public may address the Board during “Public Comment” on any item not on the agenda. Public comment on an agenda item will be heard when that item is before the Board. Only matters within the Board’s jurisdictions may be addressed. Anyone wishing to comment should make their desire known by filling out a speaker card and handing it to the Secretary. Please wait until the Chair calls your name. Walk to the microphone when called; give your name, and your comments. Please be brief and limit comments to the specific subject under discussion. Please limit your comment to three minutes.

4 CONSENT CALENDAR

4A. Approval of the Minutes of November 7, 2011* – **Page 1** **A**

5 ADMINISTRATIVE MATTERS

5A. Review of the Sunol Smart Carpool Lane “Annual Report” for Fiscal Year 2010/11** **A**

5B. Acceptance of First Quarter Financial Statements* - **Page 7** **A**

6 UPDATES

6A. Review of the I-680 SB Express Lane Operations Update* – **Page 11** **I**

6B. Review of I-680 SB HOV Widening Monthly Update* – **Page 21** **I**

7 COMMITTEE MEMBER REPORTS (Verbal) I

8 STAFF REPORTS (Verbal) I

9 ADJOURNMENT/NEXT MEETING: FEBRUARY 13, 2012 I

Key: A- Action Item; I – Information Item

- (*) Materials Enclosed
- (**) Verbal presentation will be made or materials will be available at the meeting.
- (#) All items on the agenda are subject to action and/or change by the Board.

*PLEASE DO NOT WEAR SCENTED PRODUCTS SO INDIVIDUALS WITH
ENVIRONMENTAL SENSITIVITIES MAY ATTEND*

*Alameda County Transportation Commission
1333 Broadway, Suites 220 & 300, Oakland, CA 94612
(510) 208-7400 (New Phone Number)
(510) 836-2185 Fax (Suite 220)
(510) 893-6489 Fax (Suite 300)
www.alamedactc.org*

Glossary of Acronyms

ABAG	Association of Bay Area Governments	MTC	Metropolitan Transportation Commission
ACCMA	Alameda County Congestion Management Agency	MTS	Metropolitan Transportation System
ACE	Altamont Commuter Express	NEPA	National Environmental Policy Act
ACTA	Alameda County Transportation Authority (1986 Measure B authority)	NOP	Notice of Preparation
ACTAC	Alameda County Technical Advisory Committee	PCI	Pavement Condition Index
ACTC	Alameda County Transportation Commission	PSR	Project Study Report
ACTIA	Alameda County Transportation Improvement Authority (2000 Measure B authority)	RM 2	Regional Measure 2 (Bridge toll)
ADA	Americans with Disabilities Act	RTIP	Regional Transportation Improvement Program
BAAQMD	Bay Area Air Quality Management District	RTP	Regional Transportation Plan (MTC's Transportation 2035)
BART	Bay Area Rapid Transit District	SAFETEA-LU	Safe, Accountable, Flexible, Efficient Transportation Equity Act
BRT	Bus Rapid Transit	SCS	Sustainable Community Strategy
Caltrans	California Department of Transportation	SR	State Route
CEQA	California Environmental Quality Act	SRS	Safe Routes to Schools
CIP	Capital Investment Program	STA	State Transit Assistance
CMAQ	Federal Congestion Mitigation and Air Quality	STIP	State Transportation Improvement Program
CMP	Congestion Management Program	STP	Federal Surface Transportation Program
CTC	California Transportation Commission	TCM	Transportation Control Measures
CWTP	Countywide Transportation Plan	TCRP	Transportation Congestion Relief Program
EIR	Environmental Impact Report	TDA	Transportation Development Act
FHWA	Federal Highway Administration	TDM	Travel-Demand Management
FTA	Federal Transit Administration	TEP	Transportation Expenditure Plan
GHG	Greenhouse Gas	TFCA	Transportation Fund for Clean Air
HOT	High occupancy toll	TIP	Federal Transportation Improvement Program
HOV	High occupancy vehicle	TLC	Transportation for Livable Communities
ITIP	State Interregional Transportation Improvement Program	TMP	Traffic Management Plan
LATIP	Local Area Transportation Improvement Program	TMS	Transportation Management System
LAVTA	Livermore-Amador Valley Transportation Authority	TOD	Transit-Oriented Development
LOS	Level of service	TOS	Transportation Operations Systems
		TVTC	Tri Valley Transportation Committee
		VHD	Vehicle Hours of Delay
		VMT	Vehicle miles traveled



1333 Broadway, Suites 220 & 300

Oakland, CA 94612

PH: (510) 208-7400

www.AlamedaCTC.org



Directions to the Offices of the Alameda County Transportation Commission:

**1333 Broadway, Suite 220
Oakland, CA 94612**

Public Transportation Access:

BART: City Center / 12th Street Station

AC Transit:

Lines 1,1R, 11, 12, 13, 14, 15, 18, 40, 51, 63, 72, 72M, 72R, 314, 800, 801, 802, 805, 840

Auto Access:

- Traveling South: Take 11th Street exit from I-980 to 11th Street
- Traveling North: Take 11th Street/Convention Center Exit from I-980 to 11th Street
- Parking: City Center Garage – Underground Parking, (Parking entrances located on 11th or 14th Street)



**Alameda County
Transportation Commission
1333 Broadway, Suite 220
Oakland, CA 94612**



I-680 Sunol Smart Carpool Lane JPA Meeting
MINUTES OF NOVEMBER 7, 2011
OAKLAND, CALIFORNIA

The meeting was convened by the Vice Chair, Councilmember Harrison, at 9:30am

1 PLEDGE OF ALLEGIANCE

2 ROLL CALL

Harrison, Green initially present moved to agenda item 6 (informational item only). Supervisor Haggerty arrived at 9:30 a.m. a quorum was confirmed at that time.

3 PUBLIC COMMENT

There were no public comments

4 CONSENT CALENDAR

4A. Approval of the Minutes of October 10, 2011*

The motion was made by Green and moved by Harrison, the minutes were approved unanimously.

5 ADMINISTRATIVE MATTERS

5A. Approval of Amendment No. 1 to the Agreement with the Executive Director of the SSCLJPA*

Dao presented the Amendment to the Board that recommended modifying and converting the current executive director scope of services to the role of a consultant to the Executive Director of the Alameda CTC, who will simultaneously serve as the Executive Director of the JPA, and shortening the JPA Executive Director contract from original expiration date of September 17, 2012 to new contract expiration date of February 29, 2012. The motion was moved by Green, seconded by Harrison; passed unanimously.

5B. Acceptance of the SSCLJPA Draft Audited Basic Financial Statements for the Period September 20, 2010 through June 30, 2011*

Auditor presented Draft Audit of Basic Financial Statements for the period of September 20, 2010 through June 30, 2011 and stated the report presents fairly in all material respects. Staff recommended that the Authority accept the JPA's Draft Basic Financial Statements for fiscal year 2010-2011 as presented by the certified public accounting firm of Kevin W. Harper CPA & Associates.

Green asked what rates of depreciation were used? Depreciation varies depending on exact assets (approx. 5 years -20 years); assets were grouped into categories / by useful life (i.e. Software had 5 years, Hardware 20 years, RTMS – 15 years).

Councilmember Harrison asked about investment policies of the JPA and whether

they have adopted the investment policy of the parent agencies? Dao responded that in the future Alameda CTC will bring back an investment policy once they begin to generate revenue, until now cash on hand has been used to set various JPA policies in place. Reavey stated that the Agency has generally been operating under the managing agency's investment policy and it is stated in the attached financial report.

Harrison asked about timing on payables, monthly / weekly flow? BATA generally has a week hold on revenue generated from the EL.

Green asked about "staff time" charges and if they will continue. Reavey explained that there were many staff time charges for tasks performed in this time period that may never have to be done again, i.e. establishing the accounting system, accounts within system, establishing financial statements. Green asked if it is safe to say that the charges will diminish, Reavey responded that the number will not go away and may be different due to the time frame which will cover a 1 year period; this report focused on 10 month period. Dao added that there will continue to be staff time charged for Operations and Management cost; currently the statute calls for a 3% cap on administrative cost, the number may be audited in future and brought back to the Board for discussion.

The motion was moved by Harrison, seconded by Green; passed unanimously.

6 UPDATES

6A. Review of the I-680 SB Express Lane Operations Update**

Furger gave an update of Summary of Operations through October 31, 2011. Power point was presented at the meeting; year over year comparisons were added to the presentation:

- Trips per day have increased.
- Overall Daily Revenue Trend is up.
- October 2011 was first month with substantial drop in number of first time users; if it continues to drop, staff may recommend additional marketing.
- CHP Violation results - Increase in number of citations issued.

Green: Will first time users continue to expand or at some point will the EL reach a saturation point? Furger stated that this was the first time the "new users" data showed a substantial drop, if it continues to drop Board can discuss options.

The EL is on course to beat revenue projections; Furger presented a chart which illustrated the results. Current trend will exceed a million dollars in revenue by end of fiscal year. Furger suggested the Agency acknowledge a revenue adjustment in the current budget; the Board discussed the merits of updating the budget projections. Staff will continue to monitor the revenue and bring an update back to the Board.

Furger review additional Express Lane statistics including vehicle trip frequency and

CHP enforcement.

7 COMMITTEE MEMBER REPORTS (Verbal)

No items this month.

8 STAFF REPORTS (Verbal)

Dao informed the Board that the CTC approved MTC's Regional HOT Lane Network Application, Commissioner Ghielmetti voted against the application.

Dao informed the Board that Ray Akkawi resigned October 31, 2011.

9 ADJOURNMENT/NEXT MEETING: JANUARY 9, 2012

Attest by:

A handwritten signature in black ink that reads "Christina Ramos". The signature is written in a cursive, flowing style.

**Christina Ramos
JPA Secretary**



**SUNOL SMART CARPOOL LANE
JOINT POWERS AUTHORITY
GOVERNING BOARD**

November 7, 2011

Alameda County Transportation Commission
Conference Room A & B, Third Floor
1333 Broadway, Suite 300, Oakland, CA

BOARD MEMBERS	JURISDICTION/AGENCY	SIGNATURE
Supervisor Scott Haggerty, CHAIR	County of Alameda	
Mayor Jennifer Hosterman, VICE CHAIR	City of Pleasanton	
Mayor Mark Green	City of Union City	
Mayor Marshall Kamena	City of Livermore	
Mayor Tim Sbranti	City of Dublin	
Vice Mayor Pete McHugh	VTA	
Councilmember Bill Harrison VICE CHAIR	City of Fremont	
STAFF	AGENCY	SIGNATURE
Arthur L. Dao	ACTC, Executive Director	
Frank Furger	JPA, Executive Director	
Stewart Ng	ACTC, Deputy Director Proj/Prog	
Ray Akkawi	ACTC, Mgr. of Project Delivery	
Patricia M. Reavey	ACTC, Director of Finance	
Christina Ramos	JPA, Secretary	
Claudia Leyva	ACTC, Admin. Assistant	
LEGAL COUNSEL/OTHERS	AGENCY	SIGNATURE
Zack Wasserman	WRBD	
Pamela Schock Mintzer	WRBD	
Neal Parish	WRBD	
Emily Landin-Lowe	Caltrans	
Mark Zabaneh	Caltrans	

	NAME	JURISDICTION/AGENCY	PHONE #	E-MAIL
1.	Josani Heming	ALA CTC	510-208-7414	jheming@alamadactc.org
2.	Kanda Raj	ALA CTC	925-318-4826	kanda.raj@kinder-hong.com
3.	Stephen Hays	ALA CTC	510-208-7427	SHAYS@Alamadactc.org
4.				
5.				
6.				
7.				
8.				
9.				
10.				
11.				
12.				
13.				
14.				
15.				
16.				
17.				
18.				
19.				
20.				
21.				
22.				
23.				
24.				
25.				
26.				
27.				
28.				

This page intentionally left blank.



Memorandum

DATE : November 1, 2011

TO : Sunol SMART Carpool Lane Joint Powers Authority Governing Board

FROM : Patricia Reavey, Director of Finance

SUBJECT : Acceptance of the Sunol Smart Carpool Lane Year-to-Date Operating Statement of Revenues and Expenditures for the period ended September 30, 2011

Recommendation:

It is recommended that the Authority accept the attached Year-to-Date (YTD) Operating Statement of Revenues and Expenditures of the Sunol Smart Carpool Lane for the period ended September 30, 2011 (Attachment A).

Summary:

The YTD financial report summarizes expenditures related to Express Lane operations from the beginning of the fiscal year. Net toll revenue is \$36,236 or 17.1% higher than budget. Operating expenditures continue to be paid with grant funding through the ACCMA's I-680 Southbound HOT Lane Project which has eliminated operating expenditures in this YTD Statement of Revenues and Expenditures report. This practice will continue through June 30, 2012.

To assist in understanding the true operating costs for the Express Lane for the quarter ended September 30, 2011, staff has included an additional statement which summarizes total costs incurred to operate the Sunol Smart Carpool Lane which were funded through the ACCMA's project (Attachment B).

Background:

The I-680 Express Lane opened for operations on September 20, 2010. The annual budget approved by the JPA Board for FY2011-12 projected toll revenue of \$850,000 and identified \$150,000 in operating related expenditures to be funded from revenue.

Fiscal Impact:

There is no fiscal impact to the approval of this item.

Attachments:

Attachment A - Statement of Operating Revenues and Expenditures for the Quarter Ended September 30, 2011

Attachment B - Sunol Smart Carpool Lane Operating Expenditures for the Quarter Ended September 30, 2011

SUNOL SMART CARPOOL LANE
Statement of Operating Revenues and Expenditures
For the Quarter Ended September 30, 2011

<u>OPERATING REVENUES</u>	<u>Period To Date</u>	<u>YTD Budget</u>	<u>% Used</u>	<u>Variance</u>
Toll Revenue	\$ 249,059	\$ 212,500	117.2%	\$ 36,559
Adjustments	(323)	-	0.0%	(323)
Grant reimbursed	-	-	0.0%	-
Interest	-	750	0.0%	(750)
Total Operating Revenues:	<u>248,736</u>	<u>213,250</u>		<u>\$ 35,486</u>
 <u>OPERATING EXPENSES</u>				
Express Lane Maintenance (Caltrans)	-	25,000	0.0%	25,000
Other Consultant Costs	-	12,500	0.0%	12,500
Total Operating Expenses:	<u>-</u>	<u>37,500</u>		<u>37,500</u>
 Operating Surplus (Deficit)	 <u>\$ 248,736</u>	 <u>\$ 175,750</u>		

Notes:

- No Caltrans maintenance costs were incurred in this period.
- All other operating expenditures through June 2012 are being paid with grant funding through the ACCMA's I-680 Southbound HOT Lane Project.

**SUNOL SMART CARPOOL LANE
OPERATING EXPENDITURES
For the Quarter Ended September 30, 2011**

	Operating Expenditures	--- Revenues Sources --- ACCMA Capital Grants	Operating Revenues
Executive Director Compensation	\$ 28,835	\$ 28,835	\$ -
BATA Transaction Fees	14,063	14,063	-
Legal Fees	3,908	3,908	-
ACTC Staff Time Charges	15,372	15,372	-
Utilities	2,118	2,118	-
Miscellaneous	1,150	1,150	-
Total Operating Expenditures	\$ 65,446	\$ 65,446	\$ -

This page intentionally left blank.



Memorandum

DATE : January 9, 2012

TO : Sunol SMART Carpool Lane Joint Powers Authority Governing Board

FROM : Frank Furger, Operations Manager for the SSCLJPA

SUBJECT : Express Lane Operations Summary

The following summarizes the operations of the I-680 Express Lane through the end of December 2011, totaling 66 weeks of operations.

Sept 20, 2010 - Week 66

Total Revenue	\$1,167,908.20
Average Daily Revenue	\$3,539.12
Highest Daily Revenue - February 8th	\$11,372.65
Total Trips	492,559
Average Number of Trips Per Day	1,493
Highest Number of Trips Per Day - February 8th	2,324
Average Toll	\$2.37
Min Toll	\$0.30
Max Toll	\$7.50
Average Peak Period Toll	\$2.98
Average Off-Peak Period Toll	\$0.47

Attachments 1-8:

1. Total Trips by Week
2. Total Revenue by Week
3. Cumulative Revenue by Week
4. Daily Averages per Month (Revenue & Trips)
5. Year-Over-Year Comparison by Month
6. Typical Daily Revenue By Hour
7. Typical Daily Trips by Hour
8. Typical Average Toll Rate per Hour

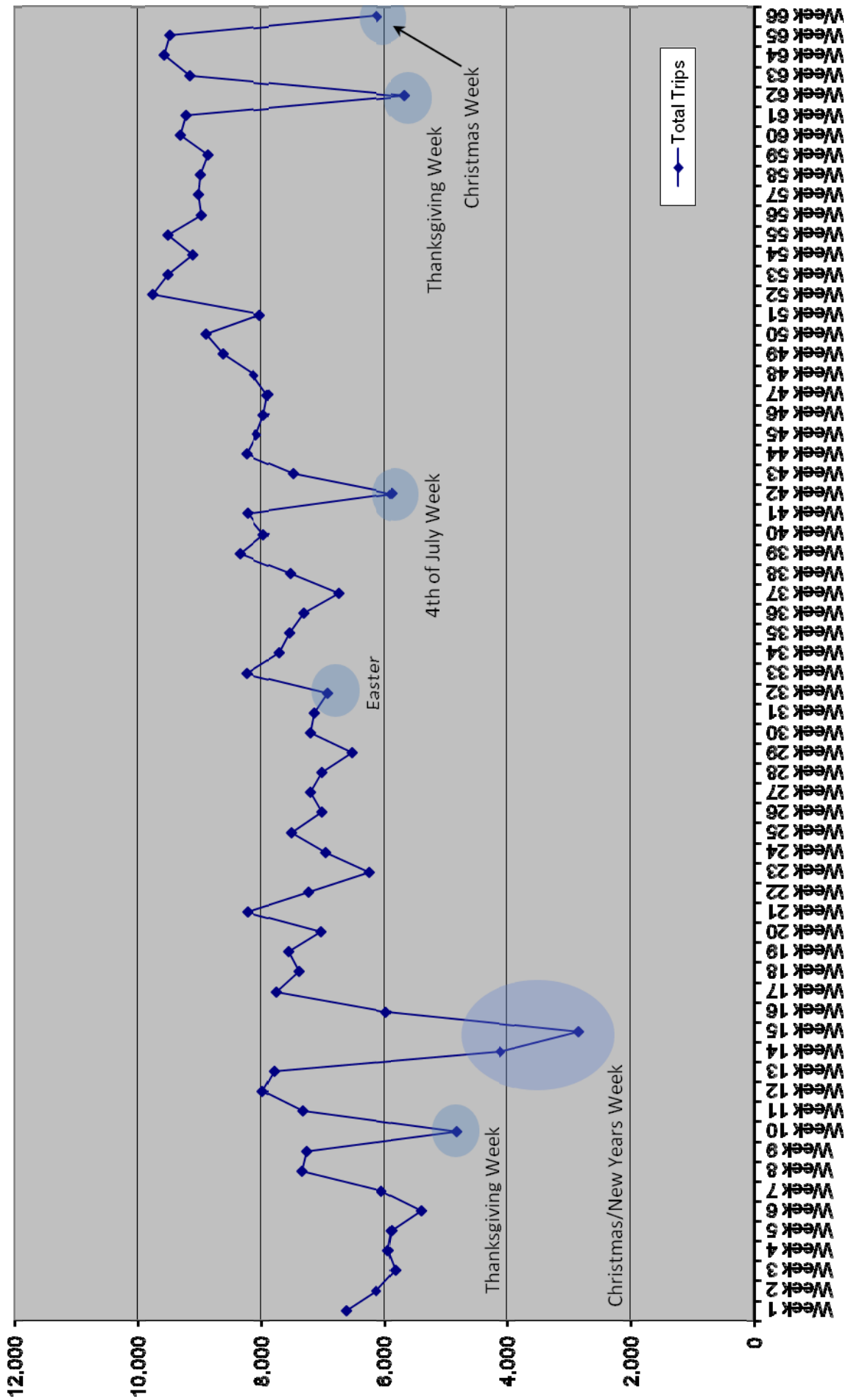
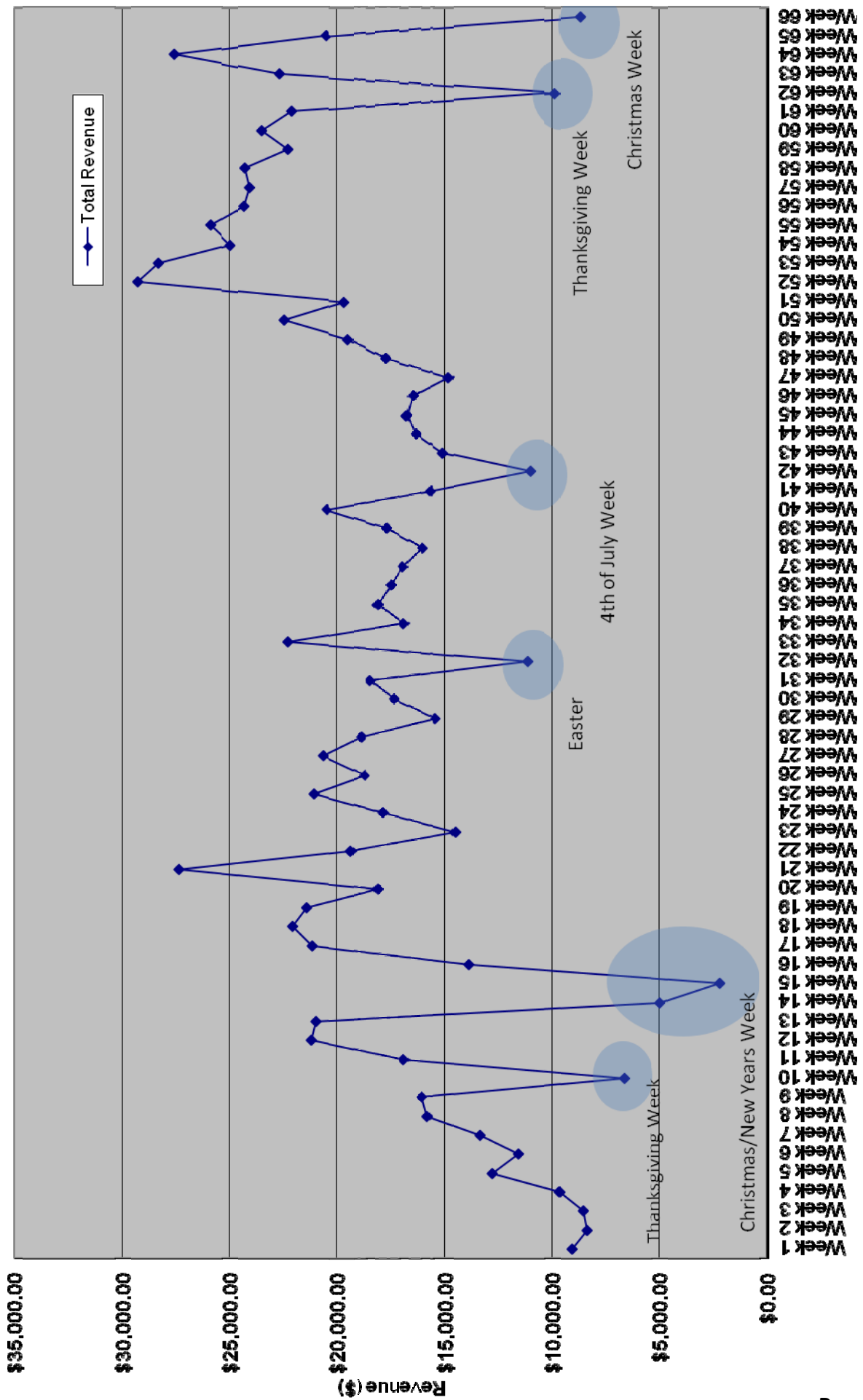


Figure 1 – Total Trips by Week



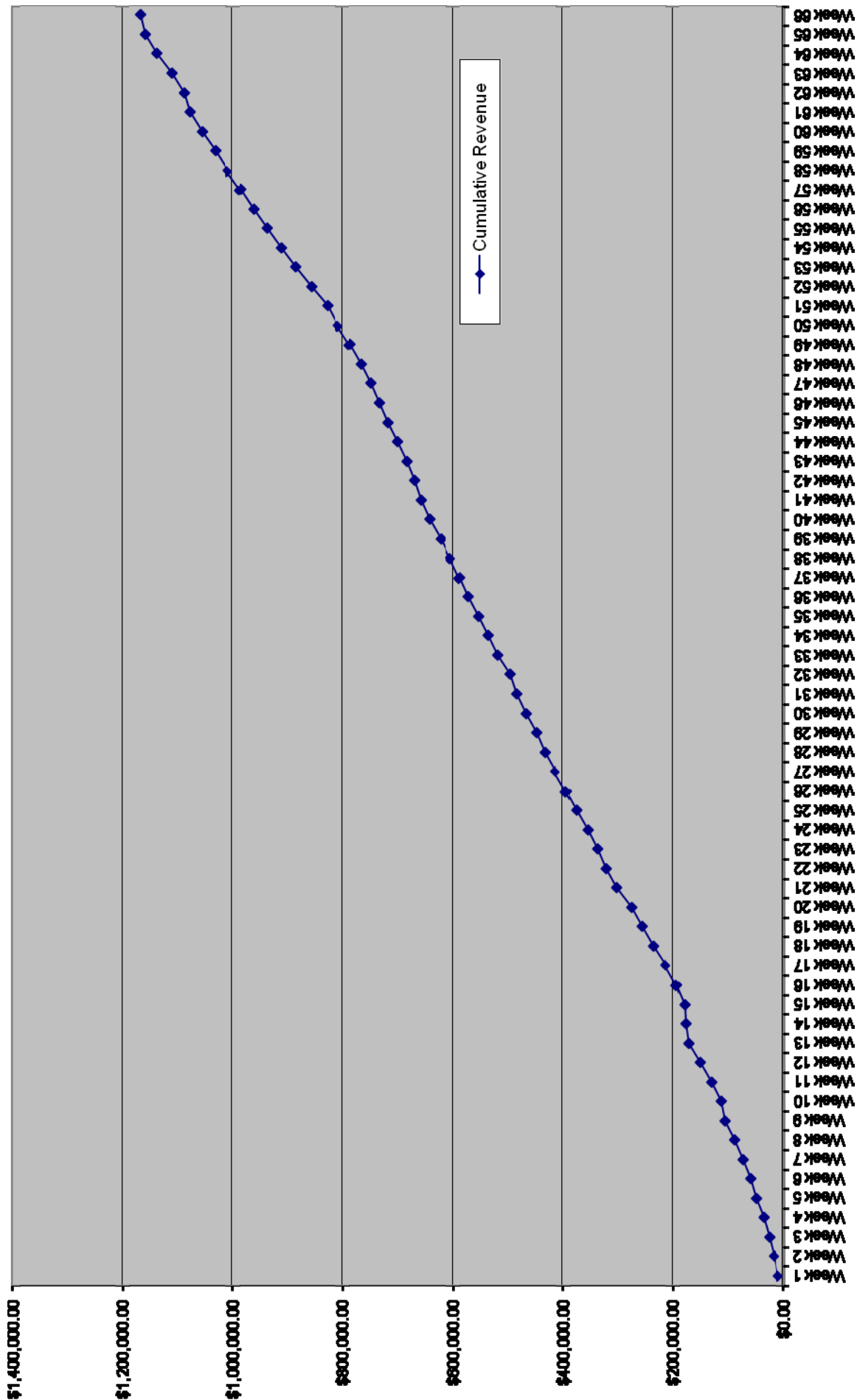
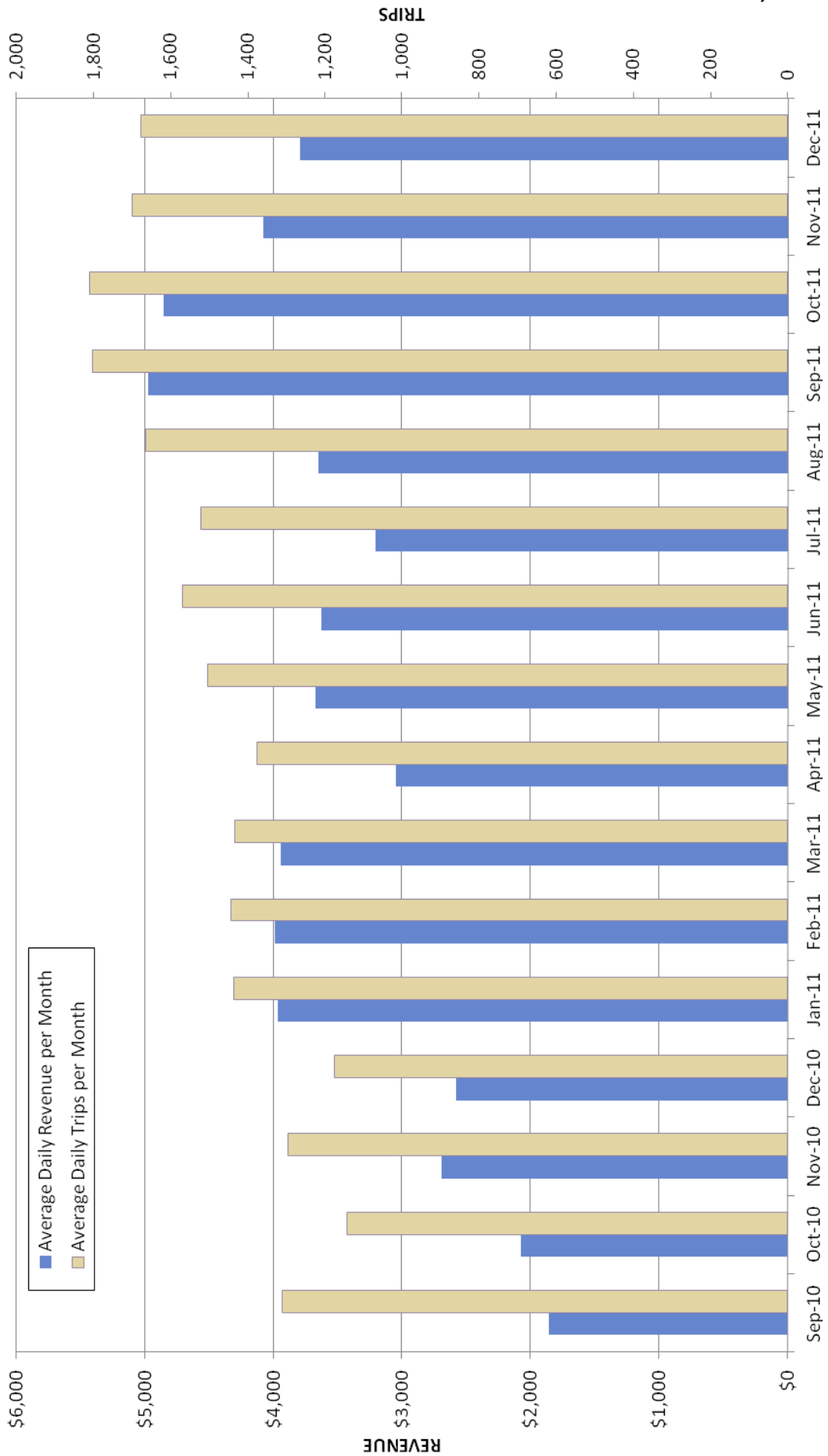


Figure 3 – Cumulative Revenue by Week



Note: Dec 11 represents 3 weeks of tolling

Figure 4 – Daily Averages per Month (Revenue & Trips)

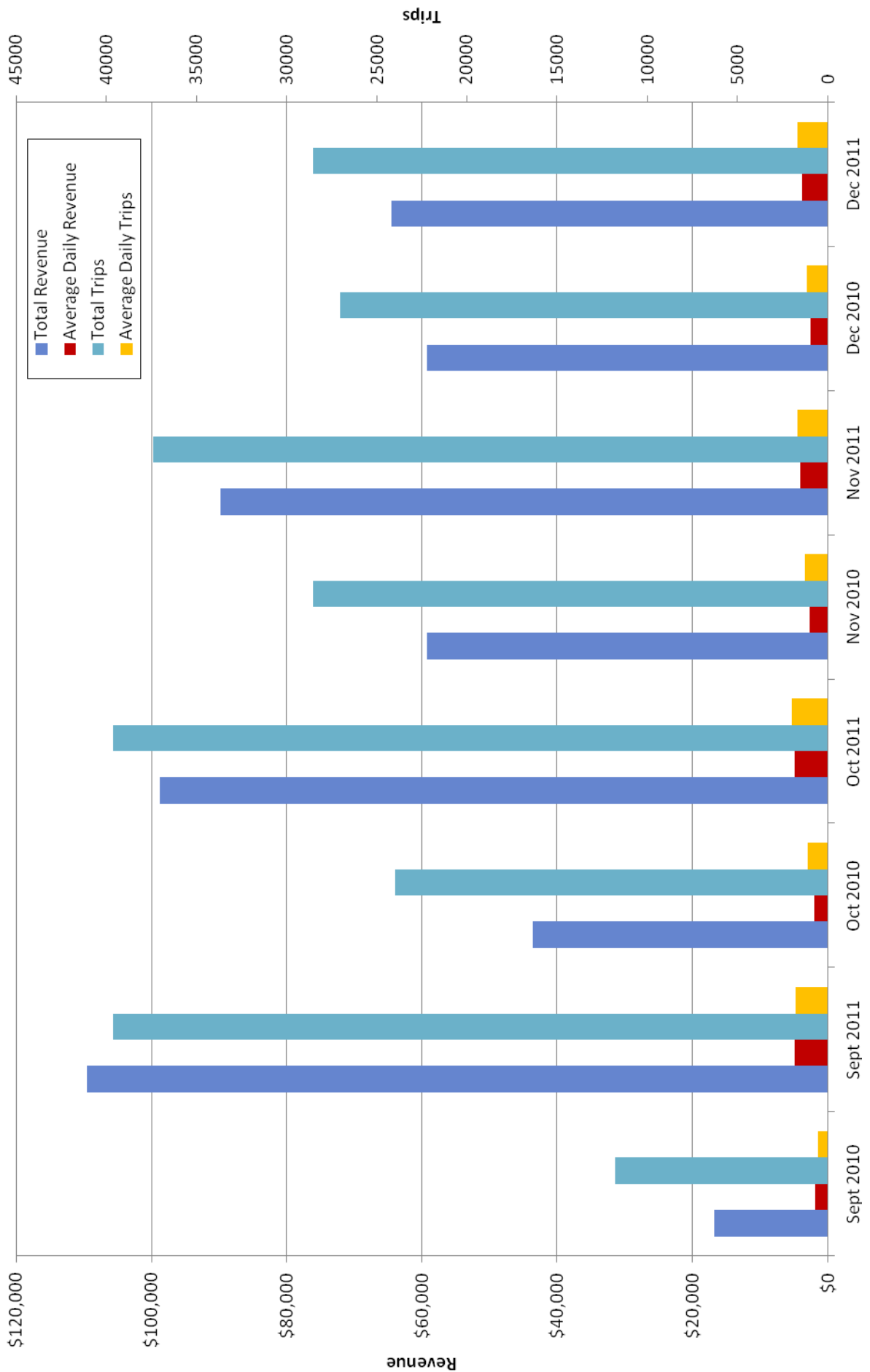


Figure 5 -- Year-Over-Year Comparison by Month

Note: Dec 11 represents 3 weeks of tolling

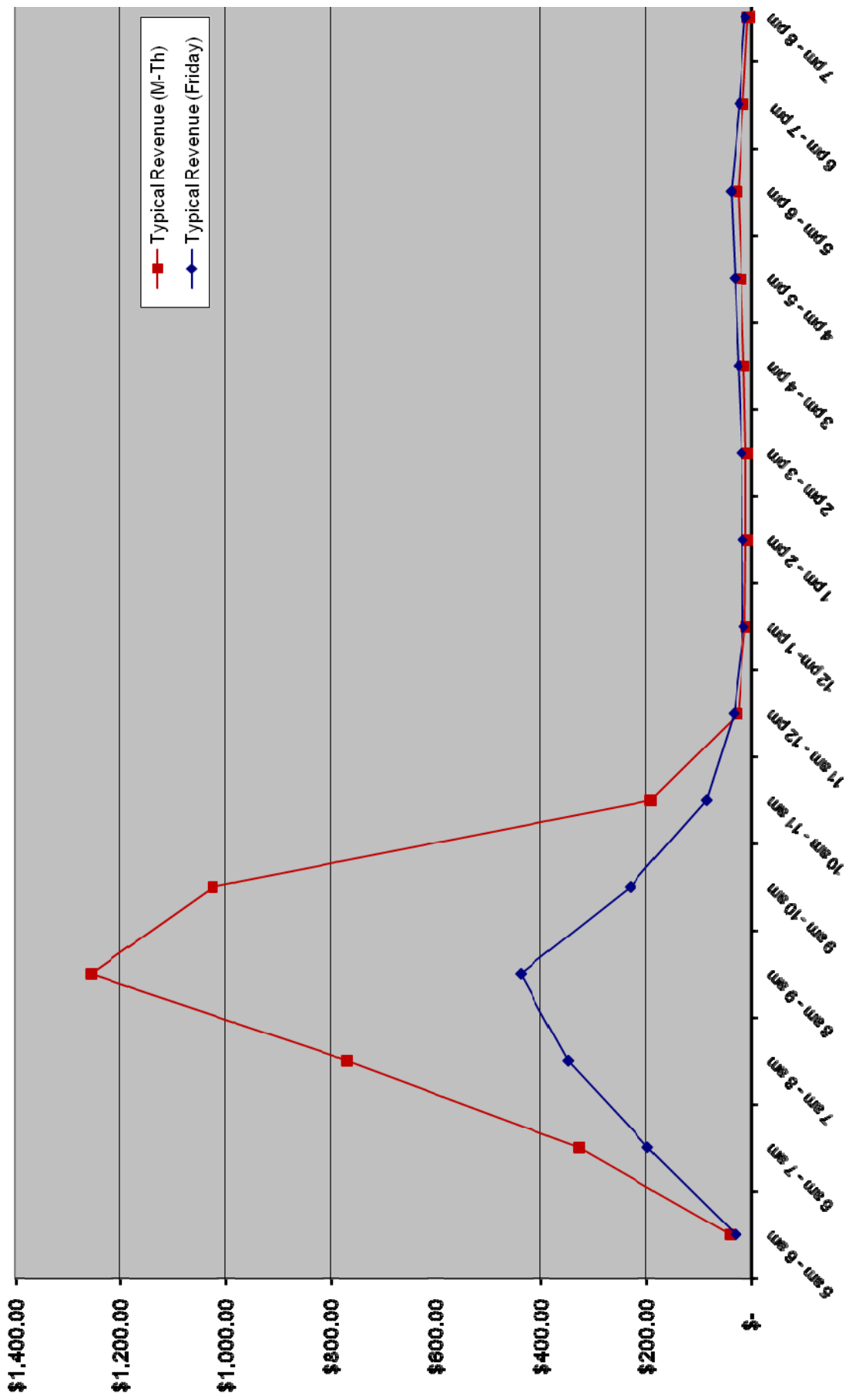


Figure 6 - Typical Daily Revenue by Hour

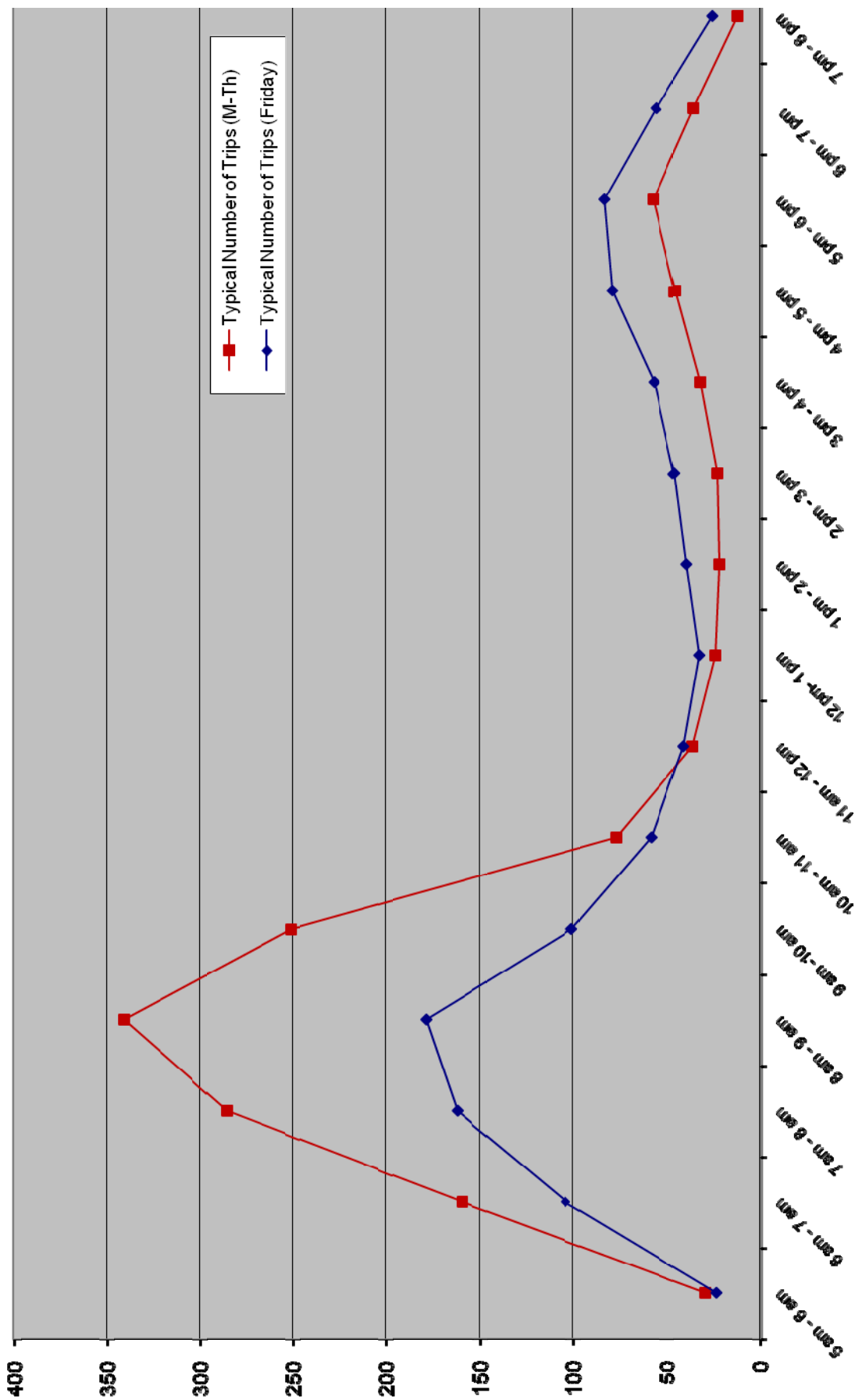


Figure 7 – Typical Daily Trips by Hour

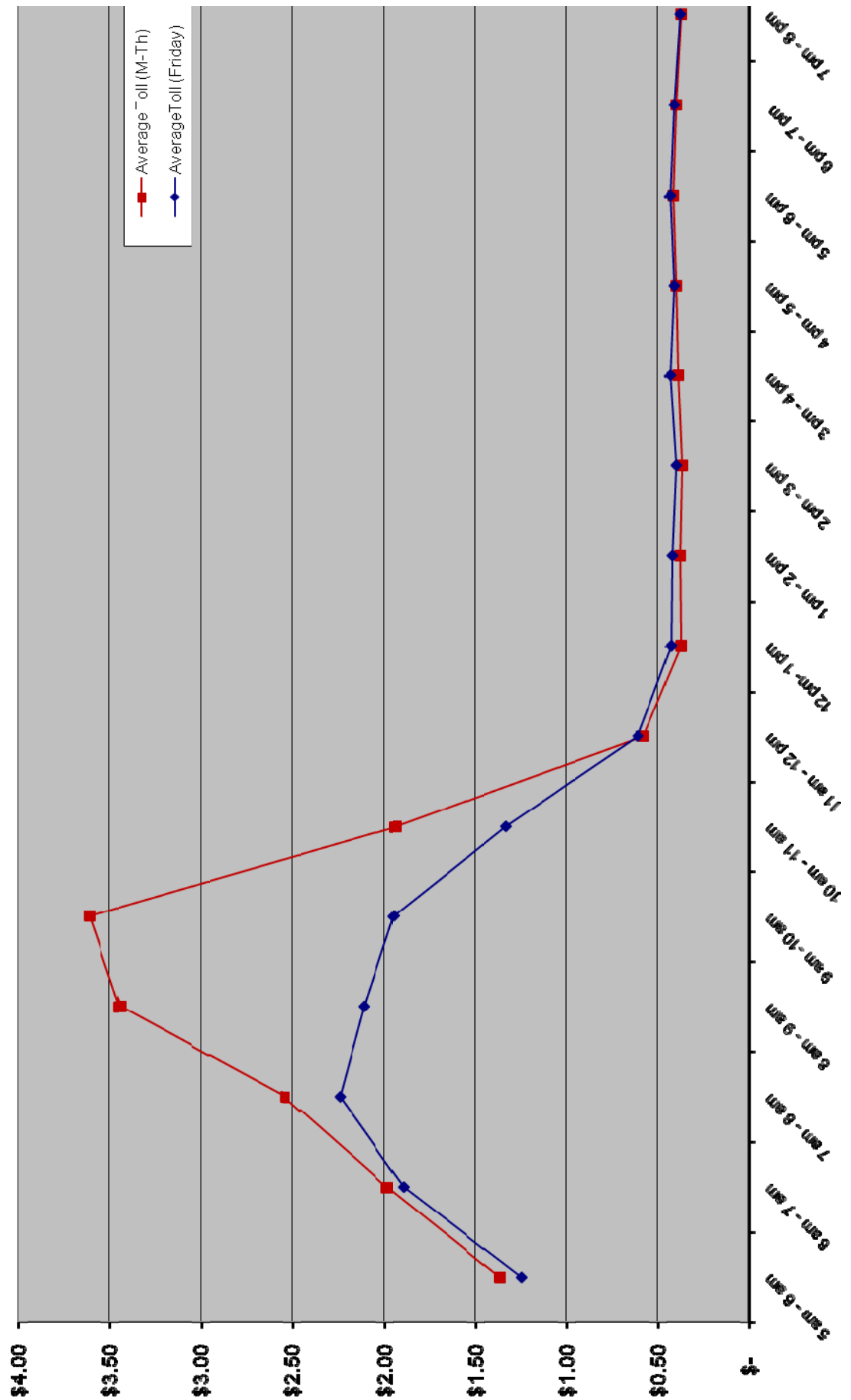


Figure 8 - Average Toll Rate by Hour

This page intentionally left blank.



Memorandum

DATE: January 3, 2012

TO: **Sunol Express Lane Joint Powers Authority**

FROM: Emily Landin-Lowe, Regional Project Manager - Caltrans
Kanda Raj, Project Controls Team - Alameda CTC

SUBJECT: I-680 SB HOV Widening Status Update

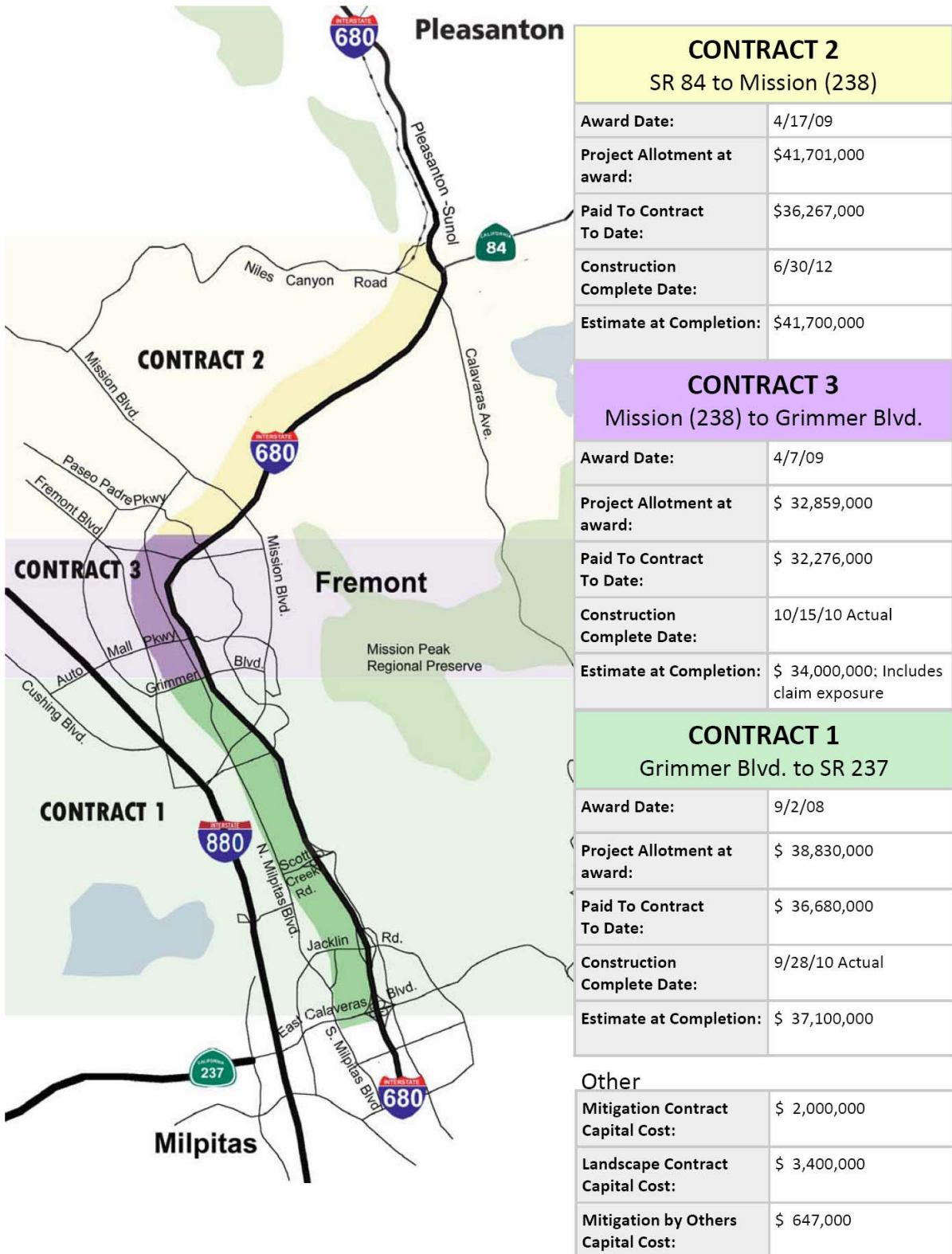
Action

Attached for the Board's review and information is the status update for the I-680 SB HOV/Express Lane project – Caltrans administered Civil Elements. The CMA is the sponsor of the HOT element of the I-680 Express Lane. However, the construction phase of the civil elements of this project is administered by Caltrans. The status report covers all activities through December 31, 2011.

Background

The 14 mile I-680 Express Lane extends from Highway 84 in the City of Pleasanton to Highway 237 in the City of Milpitas. The project widened the existing facility to allow the conversion of the HOV lane to Express (HOT) Lane. When the express lane opened it allowed carpools to travel free of charge and charged a toll for single occupancy vehicles to use the excess capacity in the High Occupancy Toll (HOT) lane. The scope of the project consists of two elements; the Civil Element, widening to accommodate HOT; and the Electronic Toll System Element that includes the Dynamic Pricing.

I-680 EXPRESS LANE CONTRACT STATUS DIAGRAM



**I-680 HOV/EXPRESS LANE PROJECT
Construction of Civil Elements
Status Report
For
December 2011**

PROJECT DESCRIPTION

The I-680 Express Lane project allows carpools to travel free of charge and charges a toll for single occupancy vehicles to use the excess capacity in the High Occupancy Toll (HOT) lane. This project widened I-680 to accommodate the existing High Occupancy Vehicle (HOV) lane and HOT lane; constructed improvements to provide a HOT lane along southbound I-680 from State Route (SR) 84 to Santa Clara County SR 237; and rehabilitated the existing pavement. The Civil Elements of the project was divided into five Contracts. Below is the update of each contract:

CONTRACT 2 (Caltrans administered) - HOV/HOT Lane & Rehabilitation, from SR 238 to Stoneridge Drive.

CONTRACT STATUS

All contract work is complete. Remaining work is change order and extra work related to changes in the Express Lane access that were identified late in the contract. This requires additional paving and guardrail work that, weather permitting, will be completed in January. Contract is within budget. Expected completion is ahead of the previously reported 6/30/12 date.

CONTRACT 1 (Caltrans administered) - HOV/HOT Lane & Rehabilitation, from Grimmer Boulevard to SR 238.

CONTRACT STATUS

Construction was completed September 27, 2010. Closeout in process, most issues have been resolved.

CONTRACT 3 (Caltrans administered) - HOV/HOT Lane & Rehabilitation, from SR 237 to Grimmer Boulevard

CONTRACT STATUS

Construction was completed October 15, 2010. Claims have been resolved. Closeout is in process.

CONTRACT 5 (Caltrans administered) – Mitigation at Sabercat

CONTRACT STATUS

Construction work is complete. Planting is complete. Plant establishment will continue for 3 years.

CONTRACT 6 (Caltrans design & administered) – Landscape

CONTRACT STATUS

Design on hold due to impacts from Freeway Performance Initiative Project conflicts. Project will be rescheduled to avoid rework.

OTHER ISSUES:

Ramp metering was activated in July 2011.

There is an additional contract under a cooperative agreement with the City of Dublin administering for required mitigation. Construction is complete and the monitoring period is beginning. Project is anticipated to remain within budget.

CTC approved the payback of \$10M in LONP/TCRP funds to ACTC. Amendment to the cooperative agreement between Alameda CTC and Caltrans has been executed.