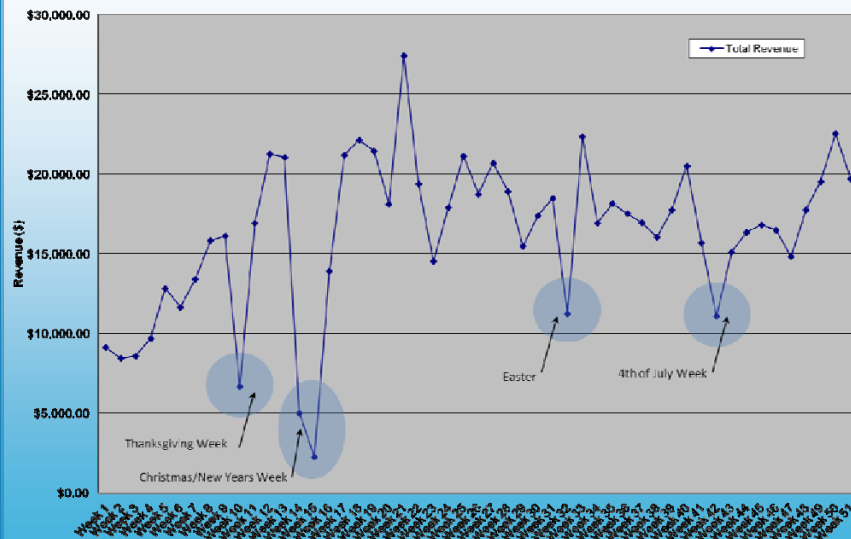


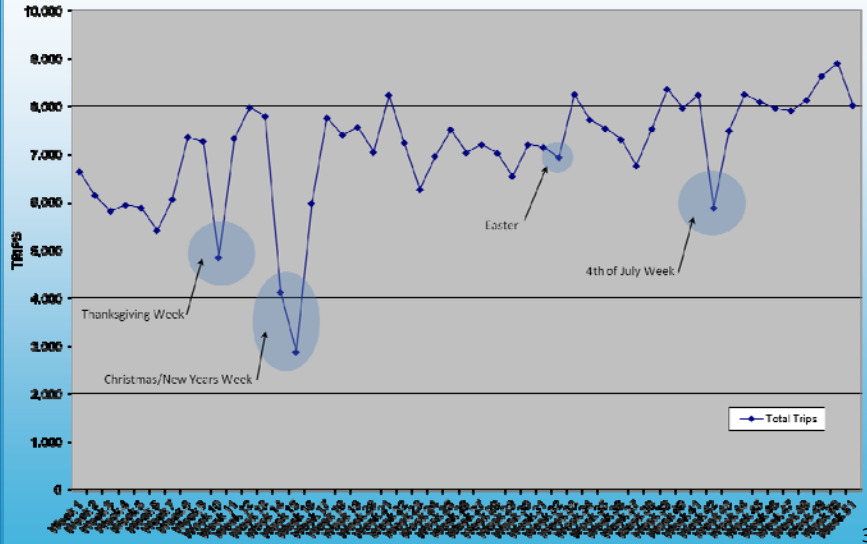
I-680 Express Lanes 51 Week Summary

Total Gross Revenue:	\$828,893
Average Daily Revenue:	\$3,250
Total Gross Trips:	360,200
Average Daily Trip:	1,413
Average Toll:	\$ 2.30
Average Peak Period Toll:	\$ 2.91
Average Off Peak Toll:	\$ 0.47

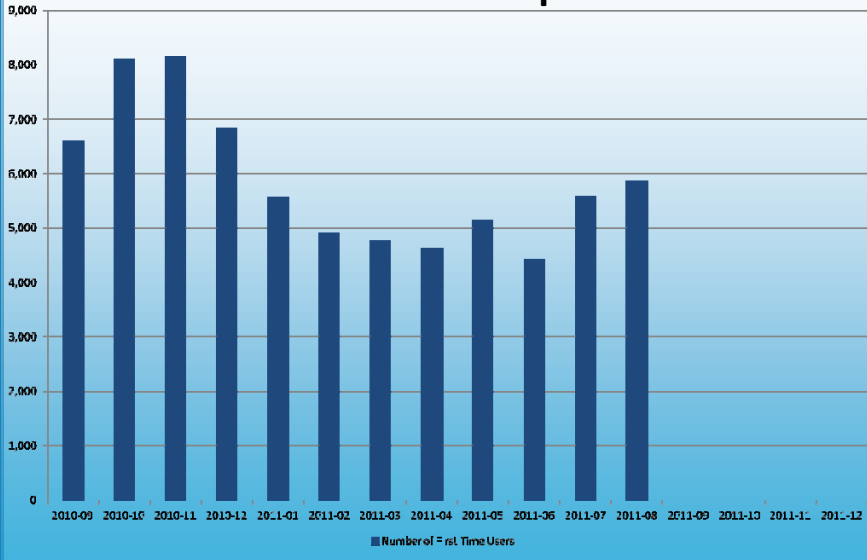
Weekly Gross Revenue



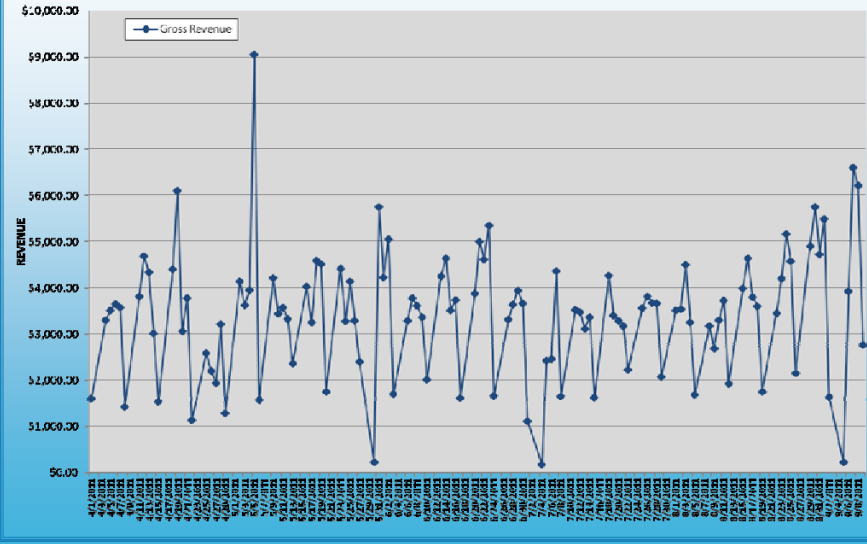
Weekly Gross Trips



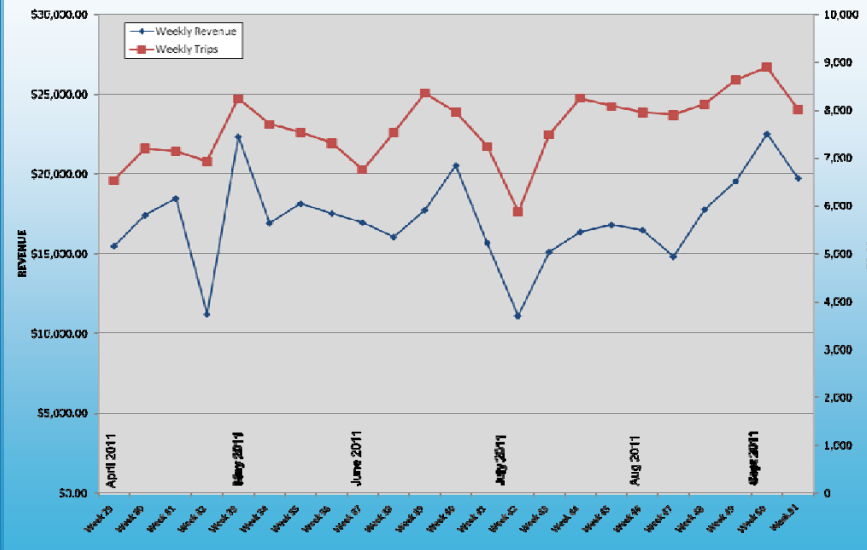
First Time Users of Express Lane



Gross Revenue By Day



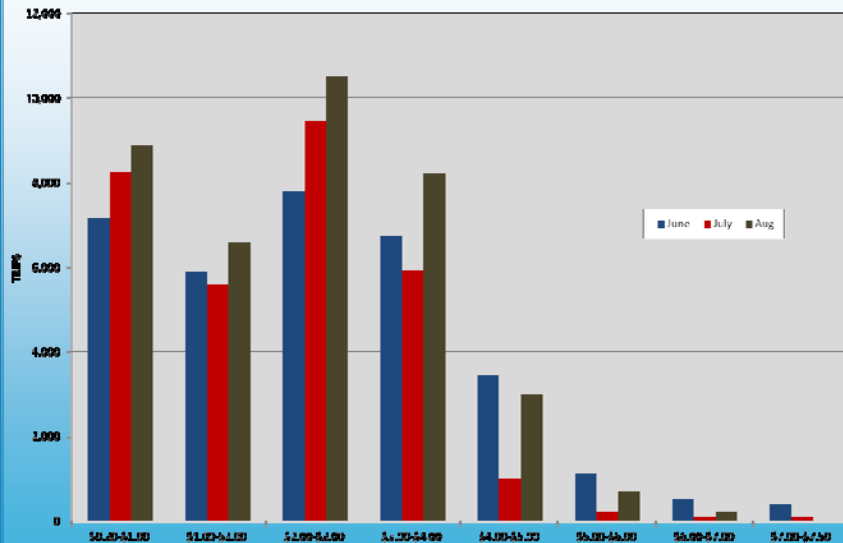
Revenue & Trips by Week



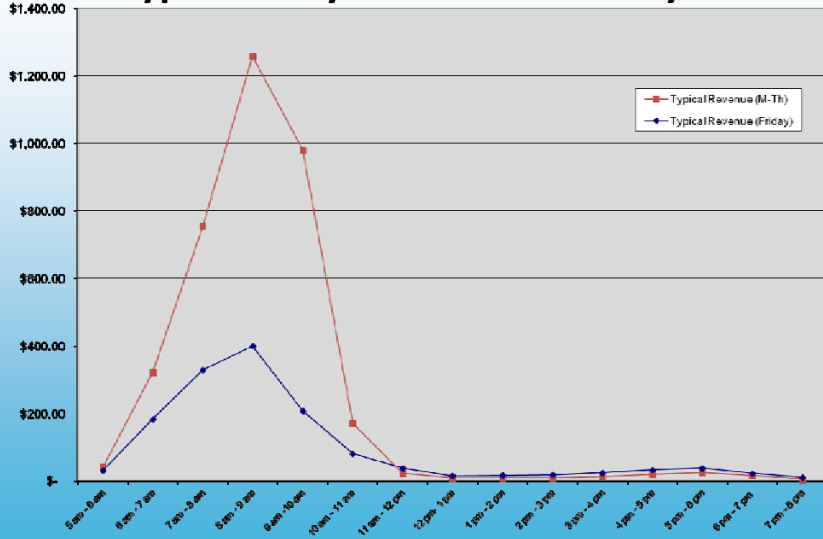
Peak Period Averages – Week 51

- Peak Period Between 6 am and 10 am
- 95% of Revenue in AM Peak
- 73% of Trips in AM Peak

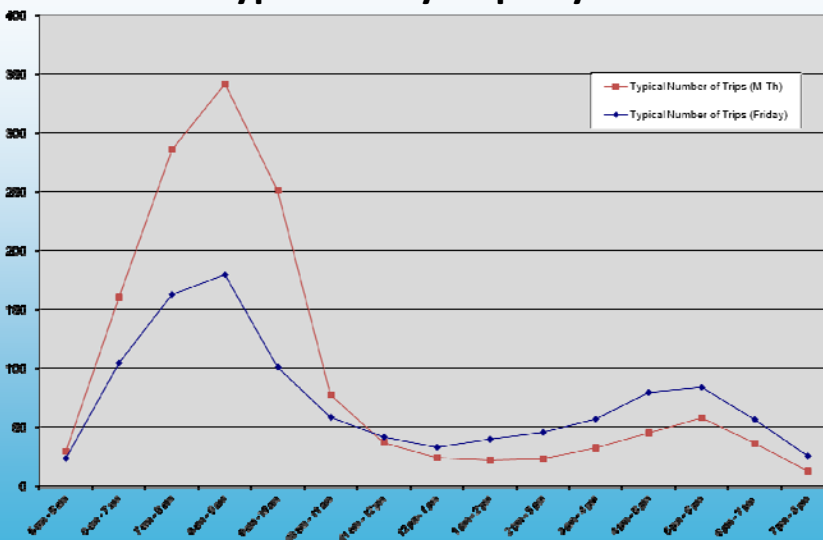
Toll Rate Frequency (June July & August 2011)



Typical Daily Revenue Totals by Hour



Typical Daily Trips by Hour



Average Toll Rate by Hour

