



Measure B Funding

Special Transportation for Seniors and People with Disabilities

Technical Advisory Committee
October 2012



Agenda

- Gap Grant Cycle 5
- Funding Formula for new funds
- Use of new pass-through funding and process
- Next Steps

Major Milestones 2012 – 2013

TAC Meeting - 10/09/12

Agenda Item 4

HANDOUT

Date	Gap Grant	Funding Formula/ Pass-through	Use of New Funds (B1)
Nov/ Dec	<ul style="list-style-type: none"> • Draft Gap Grant guidelines 	<ul style="list-style-type: none"> • Funding Formula – apply to new funds? 	<ul style="list-style-type: none"> • Draft guidelines for use of new Measure B1 funds (pending election)
Jan	<ul style="list-style-type: none"> • PAPCO and Board adopt Gap grant guidelines and call for projects 	<ul style="list-style-type: none"> • Program plan application finalized • Funding formula and projections finalized 	<ul style="list-style-type: none"> • Finalize guidelines for use of new funds
Feb 1	<ul style="list-style-type: none"> • Distribute Gap Grant Call for projects 	<ul style="list-style-type: none"> • Distribute program plan applications 	
Mar 1	<ul style="list-style-type: none"> • Gap Cycle 5 applications due 	<ul style="list-style-type: none"> • Program Plan applications due 	
Apr	<ul style="list-style-type: none"> • Approve Gap Grants for FY 13/14 	<ul style="list-style-type: none"> • Approve base program funding for FY 13/14 	<ul style="list-style-type: none"> • New funds begin to flow
May/ Jun	<ul style="list-style-type: none"> • Commission approval of Base Program and Grant Funds • Draft and execute new agreements 		

Goals for Today

- Determine some criteria for Gap Grant Cycle 5
- Determine how funding formula will be applied to new funds
- Determine *process* for determining use of new funds

PART I: Gap Grant Cycle 5

Criteria from prior Gap Grant calls for projects

1. *Fills gaps (or PAPCO priority)*
2. *Cost effective with measurable performance and monitoring*
3. *Experience and ability*
4. *Demand – Number of people served*
5. *Implementation readiness*
6. *Community support*
7. *Agency coordination*
8. *Sustainability*
9. *Innovation*
10. *Leverage outside funds*

PART I: Gap Grant Cycle 5

Criteria #1 "Fills Gaps"

Gap Grant Policy Adopted (January 2012)

- Primary Categories:
 - *Programs/Projects that enhance Mobility Management in Alameda County*
 - E.g. Travel Training, Volunteer Driver Programs, Information and Outreach, coordinated transportation
 - *One Year Pilots*
 - Providers can test success of a new service that can be absorbed into base program after first year
- Measure B providers or non-profits can apply

PART I: Gap Grant Cycle 5

Criteria #1 "Fills Gaps"

Gap Grant Policy Adopted (cont.)

- Additional Categories:
 - *Grant Matching (for grants, e.g. New Freedom or 5310)*
 - *Capital Project Matching (assistance for capital purchase that supports gap funded projects or improves base program)*
 - *Implementation Guidelines Assistance*
 - *Rainy Day Fund*
 - *Hospital Discharge Transportation Service (HDTs) & Wheelchair/Scooter Breakdown Transportation Service (WSBTS)*

PART I: Gap Grant Cycle 5

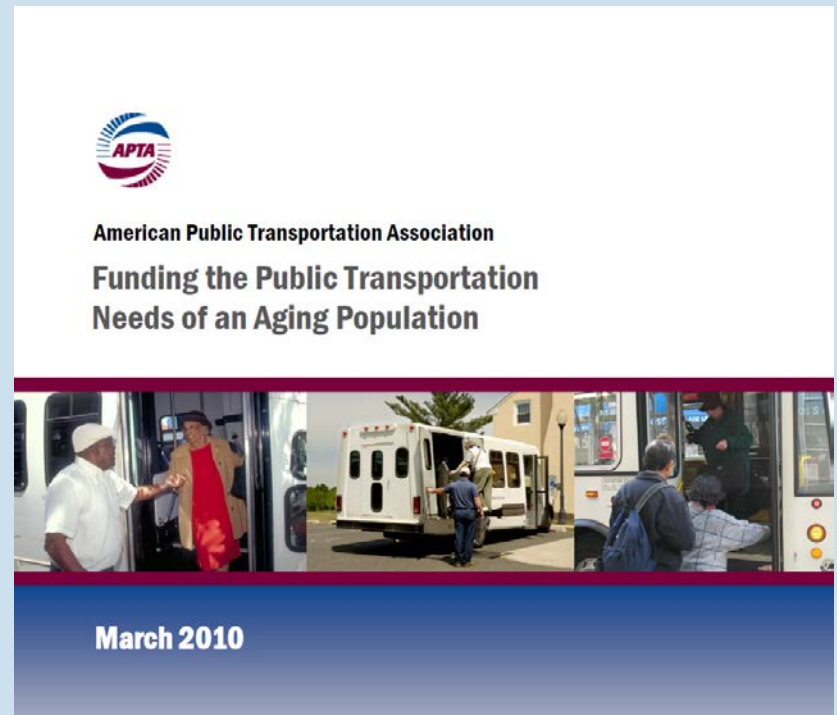
Criteria #2 "Cost effective with measurable performance and monitoring"

- You have requested improved evaluation metrics for cost/benefit

PART I: Gap Grant Cycle 5

Criteria #2 "Cost effective"

- Resource from APTA
- Cost Estimates for
 - *Dial-a-Ride Services*
 - *Taxi Subsidies*
 - *Community Transit Services*
 - *Volunteer Drivers*
 - *Information and Assistance*
 - *Outreach and Training*
 - *Bus Operator Training*



PART I: Gap Grant Cycle 5

Service Costs per Trip

Service Type	APTA Funding Report Cost per Trip
ADA Paratransit	\$35
Door-to-Door/ Dial-a-Ride	\$25
Volunteer driver program	\$14
Subsidized Taxis	\$13
Shuttle/ Community Buses	\$9
Group Trips	NA

** Outliers removed from averages*

Analysis shows that Alameda County costs average 10-20% higher

PART I: QUESTIONS – Gap Grant

1. Are these 10 criteria still the right ones?
2. Which are most important?
3. Are there any additional criteria you'd like to add?
4. Would you like to incorporate these national best practice costs into the cost effectiveness evaluation (criteria #2)?
5. Are there any additional thoughts you have on criteria #1, the categories of "gaps" that the Draft Gap Grant Policy addresses?

Part II: Funding Formula

- New formula adopted last year for current measure
- Formula factors:
 - *Seniors age 70-79 (Census 2010)*
 - *Seniors age 80+ (weighted times 1.5)*
 - *Low-income HHs earning $\leq 30\%$ of Area Median Income (ACS)*
 - *Age = proxy for disability*
- Formula effective until June 30, 2017
- American Community Survey (ACS) data updated annually
- Disability data to be incorporated if available

Part II: QUESTIONS - Funding Formula

- Would you like to recommend to PAPCO that the current formula be applied to new funds?
 - *Major remaining question was if any funds should be taken "off the top" for planning areas.*
 - *Staff recommends traditional city-based allocations for FY 13-14*
 - *Cities can still "pool" funds for coordinated planning area level programs as part of program plan application*
- Any other changes/issues with funding formula?

PART III: New Measure B1

- Use of Funds:
 - *We asked you to think about what you might use new funds on.*
 - *More food for thought: We also researched plans to see what gaps had been identified*
- Process: Public Outreach and Committees (TAC-PAPCO)

PART III: New Measure B1

Plans reviewed:

- *MTC Coordinated Plan*, MTC, in progress 2012
- *Alameda County Service Delivery Analysis*, ACTIA, 2008
- *Transit Sustainability Project Recommendations*, MTC, 2011
- *Funding the Public Transportation Needs of an Aging Population*, APTA, 2010

PART III: New Measure B1

Themes that emerged:

- Expand and improve taxi subsidy programs
 - *Expand number of trips*
 - *Tackle tough issues: driver training, accessible cab issue*
- Group Trips (BACS or Albany model)
 - *Countywide or planning area wide?*
- Ongoing expansion of volunteer driver program
- Permanent Alameda Co. Mobility Management
 - *Incl. Countywide Travel Training*
- Community shuttles
 - *Requires coordination with fixed route transit*

PART III: New Measure B1

- Implementation Process:
 - *Program Plan for FY 13/14 due in March does not have to program all funds*
 - *You can submit program plan amendments for FY 13/14 by October 1st for programs starting January 1st, 2014*
 - *Allows time for additional outreach if necessary*
- Outreach
 - *You can use pass-through funds for outreach*
 - *Recommend more broad outreach than standard program plan outreach, possible coordinated outreach at planning area level*

PART III: QUESTIONS - New Measure B1

- Have you already thought about how your program would use new funds?
- Any thoughts on the “themes” from past studies that were presented?
- Do you feel comfortable doing sufficient outreach given extra time and funds?

PART III: New Measure B1

- Possible uses of new Measure funds:
 - *Are there more people we need to reach?*
 - *Do we need to provide more service?*
 - Allow for more trips per participant?
 - Lower the age restriction?
 - Reduce cost to participants for each trip?
 - *Are there different types of service needed?*
 - New services at city-level?
 - New services at planning area?
 - *Do we need more travel training/mobility management to better connect people to services?*

Next Steps

- Joint TAC/PAPCO meeting – October 22nd
- Election – November 6th
- TAC – November 13th
- Joint TAC/PAPCO meeting – November 26th
- TAC – December 11
- Optional Joint Subcommittee in December