

OCTOBER 2015

EXECUTIVE DIRECTOR'S REPORT

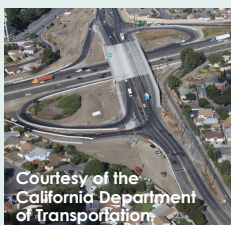
Director's Message

This month, Alameda CTC in partnership with the California Department of Transportation celebrate the near completion of the \$114 million [I-880](#)

[Southbound High Occupancy Vehicle \(HOV\) Lane Project](#)

between Hegenberger Road in Oakland

and Marina Boulevard in San Leandro. The much-needed four miles of new carpool lane in this southbound freeway segment open to traffic in mid-October and will bring significant congestion relief and safety improvements for motorists and freight traffic alike. Work to upgrade the freeway interchanges at Marina Boulevard and Davis Street is scheduled to be complete and the interchanges will be fully open for use at the end of this year (read more in "Project Updates").



Project Updates

Another Promise Kept to Voters: I-880 Southbound HOV Lane opens in October 2015

To improve Alameda County's highway system and aging infrastructure, Alameda CTC embarked on an aggressive endeavor in 2006 to attract funding from the state Proposition 1B program for vital projects throughout the county. Seven Alameda County projects were selected by the California Transportation Commission to receive funding under the program, including an express lane on I-880.

This October, Alameda CTC marks the successful completion of another significant Corridor Mobility Improvement Account bond-funded highway project. The \$106.5 million [I-880 Southbound High Occupancy Vehicle \(HOV\) Lane Project](#) broke ground in early 2013 along I-880, a major regional goods movement corridor connecting the Port of Oakland, Oakland International Airport and major economic centers in the Bay Area.

The project includes widening the I-880 freeway mainline and construction of a carpool lane in the southbound direction between Hegenberger Road and Marina Boulevard in Oakland and San Leandro. Additionally, the project widened the bridge over the Union Pacific Railroad and San Leandro Creek, added a new soundwall and reconstructed the Davis and Marina overcrossings to current standards. In anticipation of the new Kaiser Hospital development at Marina Boulevard, improvements at the interchange were designed to provide expanded access from the freeway, to and around the facility.

The new carpool lane opens to the public mid-October and aims to reduce travel time, encourage ride sharing and deliver traffic relief to commuters and freight carriers along this notoriously congested stretch of corridor in Central Alameda County.

[Director's Message cont'd on page 2](#)

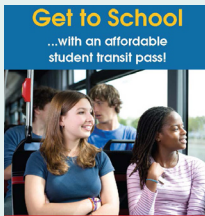
TABLE OF CONTENTS

- 1 Project Updates**
I-880 Southbound HOV Lane Opens
- 2 Transportation Planning Updates**
Countywide Multimodal Arterial Plan
- Policy News**
Commission Retreat summary
- 3 Finance Updates**
Closing out FY2014-15 financial information
- Programming Updates**
Same-day Accessible Trips
- 4 Outreach and Events**
October and November activities
- Committee Activities**
October advisory committee highlights
- Other News**
Meet the Primes event



Director's Message cont'd

Looking forward to meet growing transportation and economic needs, Alameda CTC is planning to make more investments on countywide major arterials and on the multimodal local roadways network, which carry the bulk of people, goods, mass transit and vehicles in the county. These investments will be guided by the Countywide Multimodal Arterial Plan, which is currently underway. Learn more in "Transportation Planning Updates" about the roadway typology framework being developed for approximately 1,200 miles of roadways across the county. Work on the Affordable Student Transit Pass program will also take off this month with the hiring of additional resources to give the Program a robust start.



The finance team tracks all of our assets and has been working with independent auditors to close out the agency's financial information for FY2014-15. Find out more about the team's activities and [contracting opportunities](#) in "Finance Updates."

Looking ahead, two of our advisory committees — the Paratransit Advisory and Planning Committee and the Paratransit Technical Advisory Committee — are meeting jointly to hold a strategic planning session on October 26 at 1 p.m. to discuss the availability and reliability of same-day accessible trips for seniors and people with disabilities (see "Programming Updates").

On behalf of the Bay Area Business Outreach Committee, we're also hosting a "Meet the Primes" event on November 4. Bay Area transit operators, prime contractors and subcontractors will have the opportunity to learn about upcoming contracting opportunities and network with other organizations (see page 4 for more information).

Sincerely,

ARTHUR L. DAO
Executive Director
Alameda County Transportation Commission

Transportation Planning Updates

Countywide Multimodal Arterial Plan

Arterial roadways are an essential part of the transportation system in Alameda County, moving people and goods within our local communities and the county. Alameda CTC is in the process of developing a Countywide Multimodal Arterial Plan to study and evaluate the countywide arterial network for all transportation modes in the context of surrounding land uses.

The arterial plan sets the stage for a new approach to managing Alameda County's roadways to meet growing community and economic needs. This work represents the next generation of complete streets planning and implementation in the Bay Area, the state and around the country.

Integral to the plan development process is close coordination between local jurisdictions, bus transit operators, the California Department of Transportation and the Metropolitan Transportation Commission as well as non-agency groups representing seniors, people with disabilities, emergency responders, trucking and bicycle and pedestrian groups. Alameda CTC held over 50 meetings for feedback and addressed over 600 comments on the plan.

The arterial plan will provide guidance to local jurisdictions implementing state-mandated complete streets policies by developing a roadway typology framework — a set of transportation and land-use classifications that identify street-level land use characteristics and multimodal uses for the arterials on the "Study Network," approximately 1,200 miles of major arterial and collectors across the county, that complement the adjacent land uses.

After developing a needs assessment for each mode on the Study Network, the project team will recommend improvements for a core subset of the Study Network based on modal priorities to strengthen the arterials of countywide significance. For more information, visit the [Countywide Multimodal Arterial Plan web page](#).

Policy News

Commission Retreat summary

Alameda CTC fully launched Measure BB at its Commission retreat on July 17, 2015, which gave Commissioners the opportunity to consider how to influence policy, funding and legislation to facilitate delivery of the transportation projects and programs in the 2014 Transportation Expenditure Plan.

The main takeaways of the retreat are the following:

- **Alameda County is a core transportation hub in the Bay Area.** Its central location and transportation assets have a far-reaching effect on the economy, including vital access to housing, jobs, education and transit, and supports multiple transportation modes including bus service, commuter rail, roads and highways, bicycle and pedestrian pathways and paratransit.
- **Measure BB sales tax collection** began in April 2015, Alameda CTC fully launched Measure BB in July, and fund recipients began to receive their first payments this summer. This funding will result in economic development and job creation and Alameda CTC will need to leverage these dollars to fully deliver Measure BB.
- **Partners** are paramount to collaborate on policies, funding and legislation to help

Policy News cont'd on page 4

Arterial Plan Typology Framework



Land Use Context



Base Street



Modes of Travel

Finance Updates

Closing out FY2014-15 financial information

During September, the finance team worked with independent auditors to close out financial information for FY2014-15 and to make sure the auditors have all information and documents required to perform their audit work.

The finance team also began the process of creating the Comprehensive Annual Financial Report (CAFR) for the year ended June 30, 2015. The CAFR will contain new fund categories for Measure BB, for which Alameda CTC received the first flow of funding in June 2015.

In addition, the finance team has worked to ensure the new financial database is populated with all pertinent data, so that the agency can take advantage of the new controls and features this software offers.

Contracting opportunities

Alameda CTC recently completed the procurement process for project development and delivery of the Affordable Student Transit Pass Program.

The City of Newark, the project sponsor of the Central Avenue Overpass Project, recently released a request for proposals for environmental and design services and expects to award a contract late 2015.

Alameda CTC currently has one open advertisement for toll system integration design and installation services for the I-680 Sunol Express Lanes – Northbound project and anticipates issuing solicitations for maintenance services for the East Bay Greenway project and overall monitoring services for elements of the Congestion Management Program over the next couple months. For more information, visit the [Contracting Opportunities web page](#).

Programming Updates

Paratransit quarterly workshop – Same-day Accessible Trips

On October 26 at 1 p.m., the Paratransit Advisory and Planning Committee (PAPCO) and Paratransit Technical Advisory Committee (ParaTAC) will meet jointly to discuss the availability and reliability of on-demand, same-day wheelchair-accessible trips, which is a long-standing challenge in Alameda County.

Sudden ill health, damaged mobility devices and inclement weather are just a few examples of situations in which same-day accessible trips are needed to maintain a high quality of life and connection with the community. The committees will receive a presentation on the challenges surrounding same-day accessible transportation in Alameda County and discuss potential strategies and opportunities. All PAPCO and ParaTAC meetings are open to the public, and interested persons are invited to attend and comment.

Measure BB Community Development Investment Program Guidelines

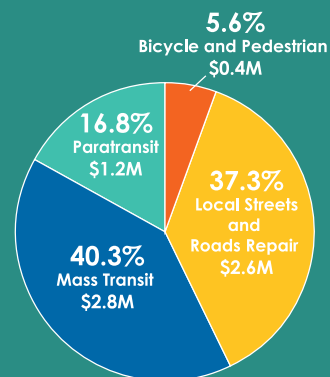
In November 2014, voters approved Measure BB, a half-cent sales tax, and its 2014 Transportation Expenditure Plan (TEP) to support transportation improvements across the county. Alameda CTC will distribute on a discretionary basis a total of 4 percent of net sales tax revenue specified in the TEP for the development and implementation of the Community Development Investments Program (CDIP).

The CDIP will support existing and new transportation infrastructure improvements that will enhance access and provide increased connectivity to and between job centers, schools, transportation facilities, community centers and residential developments. Alameda CTC is developing program guidelines to establish the CDIP objectives, project and program eligibilities, and selection criteria that will guide future programming decisions. The program guidelines will be adopted in spring 2016 and will set the stage for allocations to begin through the [Comprehensive Investment Plan](#) in spring 2017.

Transportation Investments

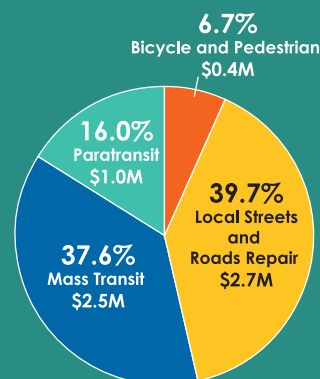
Measure BB Program Distributions

Measure BB direct local distributions began in April 2015; over \$7.0 million was distributed in July 2015.



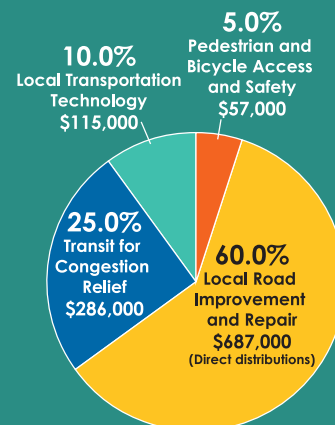
Measure B Program Distributions

Measure B direct local distributions have totaled more than \$782.2 million since 2002. In July 2015, over \$6.6 million was distributed for four programs.



Vehicle Registration Fee

Since 2011, Alameda CTC has distributed over \$29.1 million for local road repair; over \$1.1 million was collected in July 2015.



Outreach and Events

Alameda CTC hosts or participates in the following events during October and November:

- October 3 – Senior Informational Fair in Dublin; Dublin Police Services Crime Prevention Unit's Safety Fair, including the BikeMobile
- October 6 – Senior Resource Faire at the Newark Senior Center
- October 7 – International Walk and Roll to School Day countywide
- October 10 – Ashland/Cherryland FamFest in San Leandro, including the BikeMobile
- October 11 – Niles Canyon Stroll & Roll in Fremont
- October 14 – I-580 Express Lanes presentation to the Pleasanton Chamber of Commerce Board; California Public Utilities Commission/Comcast Bay Area Small Business Expo in S. San Francisco
- October 15-16 – 21st Annual California Transportation Foundation Transportation Education Symposium at University of California, Los Angeles
- October 16 – Valley Industry & Commerce Association panel discussion in Southern, Calif.
- October 21 – Association of Pedestrian and Bicycle Professionals (APBP) Webinar at Alameda CTC: Tactical Urbanism
- October 22 – Calmentor Steering Committee meeting at Caltrans District 4 office in Oakland
- October 26 – Paratransit Strategic Planning Workshop: Same-day Accessibility Trips
- October 27 – I-580 Express Lanes presentation to the Tracy Rotary
- October 29 – Contractor Outreach Event: Measure BB Project Opportunity Look-ahead in Hayward
- November 4 – "Meet the Primes" at Alameda CTC with the Bay Area Business Outreach Committee
- November 6 – East Bay Greenway ribbon cutting at the Oakland-Coliseum BART Station
- November 18 – East Bay Municipal Engineers' Club presentation at the Diablo Creek Golf Course in Concord; APBP Webinar at Alameda CTC: Bike Boxes

Policy News cont'd from page 2

Alameda CTC deliver Measure BB.

- **Policies** that support increased investments in Self-Help Counties and effective project delivery and implementation tools are essential to Measure BB success.
- **Legislation** is needed to advance projects/programs, reward Self-Help Counties and increase funding for transportation in Alameda County.

These retreat messages will be integrated into agency publications, the overall work program and the legislative platform to advance the agency's work.

Commissioners have the ability to act in ways that will support Measure BB investments by partnering with other agencies and coordinating on policies, funding and legislation. Leveraging these funds for critical projects and programs will allow Alameda CTC to deliver on its promise to the voters and will result in better transportation throughout Alameda County and beyond.



Other News

Meet the Primes event

On Wednesday, November 4 from 8:30 a.m. to 12 p.m., Alameda CTC will host a "Meet the Primes" event on behalf of the Bay Area Business Outreach Committee (BOC). This large gathering of Bay Area transit and transportation agencies, prime contractors and interested Disadvantaged Business Enterprise Program contractors and subcontractors will give participants the opportunity to learn about contracting opportunities funded by Measure BB and other fund sources, as well as to network with other organizations.

The goal of the BOC is to assist small and disadvantaged companies in doing business with Bay Area transportation agencies. For more information about the event, visit the [Alameda CTC event calendar](#).

Committee Activities

October advisory committees

In October, several advisory committees met. Highlights include:

- October 8 – The [Alameda County Technical Advisory Committee](#) (ACTAC) approved the draft 2015 Congestion Management Program, the Countywide Transit Plan network evaluation and the Countywide Multimodal Arterial Plan typology framework and modal priorities. ACTAC also approved the final projects list for Plan Bay Area, along with the FY2015-16, Transportation Fund Clean Air program, and received an update on the State Transportation Improvement Program.
- October 8 – The [Bicycle and Pedestrian Advisory Committee](#) (BPAC) reviewed the City of Dublin Iron Horse Connectivity Feasibility Study. BPAC discussed the annual report on Countywide Bicycle and Pedestrian Plan implementation and integration of the bicycle/pedestrian plans and pavement management programs, and received reports on the Alameda County Pedestrian-Bicycle Working Group and the Arterial Plan Technical Advisory Committee meeting.
- October 26 – The [Paratransit Advisory and Planning Committee](#) and the [Paratransit Technical Advisory Committee](#) held a Paratransit Strategic Planning Workshop about Same-day Accessible Trips in an effort to pinpoint potential strategies and opportunities to enhance and improve this service, which has faced long-standing challenges in Alameda County regarding availability and reliability.

Webinar: Bike Boxes

On Wednesday, November 18 from 12 to 1 p.m. (PST), join us for an Association of Pedestrian and Bicycle Professionals free webinar at Alameda CTC, 1111 Broadway, Suite 800. The topic is "[Bike Boxes](#)." Feel free to bring a brown bag lunch. Alameda CTC hosts the event and covers the registration fee, so attendance is free.