



OCTOBER 2014

# EXECUTIVE DIRECTOR'S REPORT

## Director's Message

**MEASURE BB ON THE BALLOT** can sustain and improve Alameda County's transportation system for the next 30 years. The [2014 Transportation Expenditure Plan](#) that will go before voters on November 4th will fund essential transportation improvements to keep transportation affordable and future generations moving. A recent [economic analysis](#) reports the Plan will yield \$20 billion in direct and indirect economic activity and stimulate the creation of 150,000 jobs (see "Policy News" and the [2014 Plan web page](#) for more information).

The [Sustainable Communities Technical Assistance Program](#) is already creating jobs and will assist local jurisdictions moving forward with a number of planning efforts. Learn more about this and receive an update on our Congestion Management Program in "Transportation Planning Updates."

[Director's Message cont'd on page 2](#)

## TABLE OF CONTENTS

- 1 **Transportation Planning Updates**  
Sustainable Communities Technical Assistance Program
- 2 **Policy News**  
Support grows for 2014 Plan  
**Project Updates**  
Semi-annual capital projects update and highlights
- 3 **Finance Updates**  
Independent audit work concludes  
**Programming Updates**  
Comprehensive Investment Plan development
- 4 **Outreach and Events**  
October and November activities  
**Committee Activities**  
October advisory committee highlights  
**Other News**  
CWC 12th Annual Report to the Public

## Transportation Planning Updates

### Sustainable Communities Technical Assistance Program

Alameda CTC is working with local jurisdictions to move forward with a number of planning efforts funded by the Sustainable Communities Technical Assistance Program. This program focuses on planning and implementation activities related to priority development areas within Alameda County jurisdictions as well as bicycle, pedestrian and complete streets planning and implementation.

Consultant teams have been selected for the City of Dublin's Iron Horse Trail Connectivity to BART Feasibility Study, the City of Alameda's Clement Avenue Complete Street Corridor Concept Plan, the City of Oakland's Downtown Oakland Comprehensive Circulation Study, and the Cities of Albany and San Leandro Parking Management Plans.

The City of Hayward Downtown Specific Plan and the Central County Complete Streets Implementation project are both in the consultant selection process. Alameda CTC is working with local project sponsors to finalize the scopes of work for the Tri-Valley Integrated Transit and Park and Ride Study and the City of Oakland Bikeway Network 2.0. Requests for proposals for these two projects are expected to be issued this fall/winter.

### Congestion Management Program implementation

Alameda CTC is implementing its legislatively mandated 2013 Congestion Management Program (CMP) that includes five main elements:

[Transportation Planning Updates cont'd on page 2](#)

## Policy News

### Support grows for 2014 Plan



**Measure BB** on the November 2014 Ballot

- Improve and expand BART
- Keep transit fares affordable for seniors and people with disabilities
- Increase reliable bus service
- Provide an affordable student transit pass
- Expand safe walking and biking paths
- Repair streets and reduce traffic
- Create good quality local jobs

Public education and outreach continues for the [2014 Transportation Expenditure Plan](#), which will accompany Measure BB on the November 4, 2014 ballot. Alameda CTC staff has been providing information on the ballot to residents, communities and businesses throughout Alameda County about the 2014 Plan that would generate nearly \$8 billion over 30 years for essential transportation improvements in every city in the county.

The 2014 Plan will expand BART, bus and commuter rail; keep fares affordable for seniors, youth and people with disabilities; provide traffic relief; improve air quality and create an estimated [150,000 full-time equivalent jobs in Alameda County](#).

[Supporters of the Plan](#) include the Alameda County Board of Supervisors, 14 city councils, several chambers of commerce, as well as businesses, government and community organizations throughout Alameda County, such as the Alameda County Taxpayers' Association, Bay Area Council, California Alliance for Jobs, California League of Conservation Voters, League of Women Voters, Sierra Club, United Seniors of Oakland and Alameda County and many others. Visit the Alameda CTC website for

*Director's Message cont'd*

Another exciting plan under development is Alameda CTC's new Comprehensive Investment Plan (CIP) that will serve as a five-year implementation strategy for priority capital improvement projects and programs. Alameda CTC will work to advance transportation priorities included in the CIP through a comprehensive programming effort (read more in "Programming Updates").

I'm pleased to share our semi-annual update of the Capital Projects Program, which includes Alameda CTC's Measure B (1986 and 2000) and Proposition 1B programs. Of our \$3.2 billion in active projects, \$2.5 billion of these [projects](#) are under construction and will improve transportation throughout the county. In fact, 96 percent of Measure B capital project funding has already been allocated (see "Project Updates").

Several of these capital projects are featured in the [Citizens Watchdog Committee 12th Annual Report to the Public](#), which reports that Alameda CTC's audited revenue and expenditures were in compliance with specific financial requirements, and the auditors identified no accounting concerns. [Executive summaries](#) of the full report are now available (see "Other News").

During the final stages of the independent audit process for fiscal year 2013-2014, Alameda CTC's finance team worked closely with the Commission Audit Subcommittee, the CWC Audit Subcommittee and independent auditors. Learn more about this and [contracting opportunities](#) in "Finance Updates."

Join me at upcoming activities and events on page 4, including several events to educate the public about the 2014 Plan that will shape the future of transportation throughout Alameda County.

Sincerely,

ARTHUR L. DAO  
Executive Director, Alameda CTC

## Project Updates

### Semi-annual capital projects update and highlights

Twice a year, Alameda CTC prepares a status summary for the Capital Projects Program that includes Alameda CTC's Measure B (1986 and 2000) and Proposition 1B programs. The \$3.2 billion active capital program includes a mix of highway, local streets and roads, transit, rail and bicycle and pedestrian improvements funded by federal, state, regional and local fund sources.

For the original 2000 Measure B program, 96 percent of funding has been allocated to date, and Alameda CTC has effectively delivered 80 percent of the active capital projects from all fund sources; this equates to \$2.5 billion worth of projects currently under construction. The remaining projects are at various phases in the project delivery pipeline.

The following significant project advancements have been made recently:

- **May 2014 – Traffic shifts onto new Davis Street Bridge over I-880 in San Leandro:** As part of the I-880 Southbound High Occupancy Vehicle Lane construction, portions of the new Davis and Marina overcrossings were complete and opened to traffic.
- **June 2014 – Construction complete on the Route 84 Expressway North Segment project in Livermore:** The widened roadway from Jack London Boulevard to north of Concannon Boulevard opened to traffic in June 2014.
- **June 2014 – Construction begins on I-580 Express Lanes:** Construction began on civil infrastructure to support the new I-580 Express Lanes in the Tri-Valley.
- **July 2014 – Construction begins on the final Alameda CTC Proposition 1B Bond project:** The I-880 North Safety and Operational Improvements at 23rd and 29th Avenues project was awarded in April, and construction activities began in July.



**I-80 SMART Corridor Gantry  
Installation in Berkeley and Emeryville**

- **August/September 2014 – I-80 ICM overhead gantries erected:** Along I-80 in Berkeley and Emeryville, 11 overhead gantries were installed.
- **November 2014 – Bicycle and pedestrian pathway construction expected to end:** This fall, the half-mile segment of the East Bay Greenway near the Coliseum BART Station is expected to be complete.

For more information related to the Alameda County Capital Projects Program, visit the [projects web page](#) at [www.alamedactc.org](http://www.alamedactc.org).

### Transportation Planning Updates cont'd from page 1

- Traffic Level of Service Standards and the CMP Network
- Multimodal Performance Element
- Travel Demand Management Element
- Land Use Analysis Program
- Capital Improvement Program

Through these elements, Alameda CTC's program goes beyond the legislative compliance program originally developed to reduce congestion to a forward-looking comprehensive strategy for congestion management that improves multimodal mobility and better connects transportation and land use in the county.

For more information about 2014 implementation activities and the 2015 update to the program, [visit the website](#).

## Finance Updates

### Independent audit work concludes

During September, staff worked to ensure all financial activity for fiscal year 2013-2014 was accounted for and prepared draft financial statements for the Comprehensive Annual Financial Report. Staff worked with external independent auditors, Vavrinek, Trine, Day & Company, to provide all documentation and information as requested, so they could perform tests of financial activity and procedures and processes such as internal controls.

The auditors met with the Commission's Audit Committee to perform required procedures and the Citizen's Watchdog Committee (CWC) Audit Subcommittee before beginning

the audit. The CWC Audit Subcommittee provided direction to the auditors on items the subcommittee was interested in and that they could focus on during the audit. The auditors reported back to the subcommittee at a follow-up meeting in late September.

### Contracting opportunities

Alameda CTC recently awarded a contract to the top-ranked firm for development of Parking Management Plans in Albany and San Leandro. Proposals were due for the Central County Complete Streets Implementation project on October 10, and Alameda CTC anticipates issuing up to four additional solicitations by December 2014.

*Finance Updates cont'd on page 4*

## Programming Updates

### Comprehensive Investment Plan development

Continuing work approved by the Commission in 2013, Alameda CTC moved forward on development of a Comprehensive Investment Plan (CIP), which documents a five-year implementation strategy of priority capital improvement projects and programs that achieve the vision and goals of long-range transportation plans.

The CIP serves as an allocation and investment tool for all funding resources under Alameda CTC's programming responsibility. This comprehensive document will be used to program discretionary funds such as Measure B, Vehicle Registration Fee, Lifeline Transportation Program and Transportation Fund for Clean Air, as well as capital project funds and local direct allocations.

Alameda CTC will address local priority improvements and investment strategies that will improve the transportation system, advance the development of projects and programs, and support leveraging other competitive funds for Alameda County's transportation improvements. The CIP will be developed in phases through spring 2015.

### Lifeline Transportation Program – Cycle 4 guidelines

The Metropolitan Transportation Commission releases program guidelines for the fourth cycle



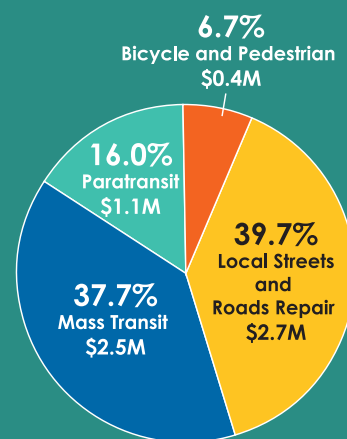
of the Lifeline Transportation Program in late October, and Alameda CTC will administer a call for projects for Alameda County, tentatively scheduled for November. The Lifeline Transportation Program has a three-year funding cycle and funds projects that improve mobility for low-income residents, support community-based transportation projects and address transportation gaps and barriers.

The Lifeline Transportation Program Cycle 4 is funded with a mix of federal Job Access Reverse Commute (JARC), State Transit Assistance (STA) and State Proposition 1B Transit Funds. Approximately \$8.9 million is available for programming from STA and JARC sources, and an additional \$8.9 million of Proposition 1B funds will go to eligible transit operators in the county by formula. Alameda CTC will also examine opportunities to coordinate the programming of Lifeline Transportation Program funds in consideration of the Comprehensive Investment Plan effort underway. Refer to the [Alameda CTC's website](#) for additional Lifeline Transportation Program information.

## Transportation Investments

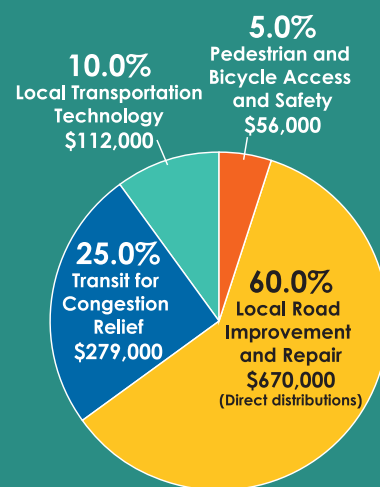
### Measure B Program Distributions Since 2002

Alameda CTC has provided more than \$679.0 million in Measure B local program distributions since 2002. In July 2014, Alameda CTC disbursed more than \$6.7 million for the following four programs.



### Vehicle Registration Fee Distributions Since 2011

Alameda CTC has dispersed over \$21.0 million in VRF Local Road Repair funds since 2011. In July 2014, Alameda CTC collected more than \$1.1 million for the following four programs.



### Total Measure B-funded Contracts\*

Alameda CTC has funded more than \$837.5 million in contracts for Alameda County businesses since 2000.

\* Total contract amount includes additional fund sources.



## Outreach and Events

Alameda CTC hosts or participates in the following events during October and November:

- October 1 – City Center Fall Music Series (Join us every Wednesday in October including the 8th, 15th and 22nd)
- October 2 – East Bay Economic Development Alliance Executive Committee panel discussion at the Zero Net Energy Center in San Leandro
- October 3 – First Fridays in Oakland's KONO District
- October 4 – Science in the Park (with the BikeMobile); OaktoberFest (with the BikeMobile) in Oakland's Dimond District; Senior Info Fair at Dublin's Senior Center
- October 7 – Senior Resource Faire in Newark; Meet the Primes with the Business Outreach Committee at Santa Clara Valley Transportation Authority in San Jose
- October 8 – 29th Annual Business Expo in Hayward
- October 12 – Sunday Streets in downtown Berkeley
- October 15 – Association of Pedestrian and Bicycle Professionals (APBP) Webinar at Alameda CTC: Design Treatments to Transition from Trails to Roadways
- October 16 – Society for Marketing Professional Services in San Francisco
- October 17 – 11th Annual Mobility Workshop at Ed Roberts Campus in Berkeley
- October 19 – 6th Annual Wheels for Meals Ride in Pleasanton; Montclair Farmer's Market
- October 22 – Livermore Rotary Club
- October 23 – Berkeley Farmers' Market at Shattuck and Rose
- October 26 – Temescal Farmers' Market on Claremont in Oakland; Halloween Community Carnival in Union City
- October 27 – Route 84 Ribbon Cutting in Livermore
- October 28 – Berkeley Farmers' Market on Adeline and 63rd Streets
- October 29 – Walk/Bike Town Hall in Castro Valley
- November 2 – Dia de los Muertos in Oakland
- November 4 – Measure BB on Alameda County Ballot
- November 19 – APBP Webinar at Alameda CTC: E-bikes, Electric Assist Bikes and Transportation Policy

## Other News

### 12th Annual Report to the Public



Alameda CTC's Citizens Watchdog Committee (CWC) has released its **12th Annual Report to the Public**, covering fiscal year 2012-2013 expenditures and CWC activities through July 2014. The report confirms that Alameda CTC's audited income and expenditures were in compliance with specific caps, and the auditors identified no accounting concerns.

CWC members are performing outreach to the public about the report, which provides an update on the delivery of voter-approved programs and projects funded by Measure B, Alameda County's half-cent sales tax for transportation improvements approved by 81.5 percent of voters in 2000.

Executive summaries of the report are also available:

- **12th Annual CWC Report Summary in English** (with hyperlinks to fact sheets)
- **12th Annual CWC Report Summary in Chinese** (中文)
- **12th Annual CWC Report Summary in Spanish** (En Español)

### Finance Updates cont'd from page 3

Upcoming contracting opportunities include maintenance services for the East Bay Greenway – 75th Avenue to 85th Avenue in Oakland project, professional services for the Route 84 Improvements – Pigeon Pass to I-680 project, the Tri-Valley Integrated Transit/Park-and-Ride Study and the City of Oakland Bikeway Network 2.0 plan. For more information, visit the **Contracting Opportunities web page**.

## Committee Activities

### October 2014 advisory committees

In October, several community advisory committees met. Highlights include:

- October 9 – The **Alameda County Technical Advisory Committee (ACTAC)** approved development of the Comprehensive Investment Plan, the Congestion Management Program implementation and 2015 update, and Lifeline Transportation Program Cycle 4 Guidelines. ACTAC members also received updates on the **2014 Transportation Expenditure Plan** and on development of three countywide multimodal plans.
- October 9 – The **Bicycle and Pedestrian Advisory Committee (BPAC)** approved the committee's bylaws. BPAC members also reviewed the draft Alameda County Bicycle Master Plan Guidelines and Measure B and Vehicle Registration Fee Bicycle and Pedestrian Expenditure Analysis.
- October 27 – The **Paratransit Advisory and Planning Committee (PAPCO) and the Paratransit Technical Advisory Committee (ParaTAC)** met jointly this month. PAPCO and ParaTAC members received a report on outcomes of the October 17th Annual Mobility Workshop, progress reports on the Cycle 5 Paratransit Gap Grants, as well as discussed guidelines for Cycle 6 Paratransit Gap Grants.
- October 27 – The **Citizens Watchdog Committee (CWC)** received updates on the CWC Annual Report outreach and on the September 10th Program Compliance Workshop. CWC members also received information on year-end investments for FY2013-14 and the draft FY2013-14 Comprehensive Annual Financial Report.

### Pedestrian Bicycle Working Group met on October 15th



On October 15, the Alameda Countywide Pedestrian Bicycle Working Group held its quarterly meeting to review its by-laws, discuss the Countywide Travel Demand Model updates in relation to bicycle and pedestrian projects and have a roundtable discussion on innovative bikeway design.