

MARCH 2015

EXECUTIVE DIRECTOR'S REPORT

Director's Message

THE FIRST 100 DAYS OF MEASURE BB

implementation have gone quickly and resulted in considerable progress. Alameda CTC has developed a two-year Measure BB allocation plan within its Comprehensive Investment Plan that integrates the planning and programming processes for transportation investments in Alameda County (read more in "Programming Updates"). The agency has also taken several steps to implement the [2014 Transportation Expenditure Plan](#) including updating program agreements with local jurisdictions and transit agencies that will receive direct local distributions and initiating all capital projects (see "Policy News").

Three of our other new plans — the [Countywide Transit Plan](#), the [Countywide Multimodal Arterial Plan](#) and the

[Director's Message cont'd on page 2](#)

TABLE OF CONTENTS

- 1 **Transportation Planning Updates**
Countywide Transportation Plan 2016 update
Policy News
Measure BB implementation
- 2 **Project Updates**
Measure BB infusion soon to begin
- 3 **Finance Updates**
Mid-year budget adjustment
Programming Updates
Comprehensive Investment Plan update
- 4 **Outreach and Events**
March and April activities
Committee Activities
March advisory committee highlights
Other News
Golden Sneaker Awards March 2-13

Transportation Planning Updates

Countywide Transportation Plan 2016 update

The Alameda Countywide Transportation Plan (CTP) is a long-range planning and policy document that guides future transportation investments for all transportation modes and users in Alameda County. Alameda CTC updates the CTP every four years; the existing CTP was adopted in 2012. Alameda CTC will initiate the 2016 CTP development process in April of 2015, and expects the plan development period to continue through December 2016.

The 2016 CTP update will coordinate with Alameda CTC's planning efforts, including:

- The Countywide Transit Plan, Countywide Multimodal Arterial Plan and Countywide Goods Movement Plan development.
- The adopted Countywide Bicycle and Pedestrian Plans.
- The Congestion Management Program.

The 2016 CTP will build on the 2012 CTP update while focusing on changes in the regulatory and financial environment by:

- Addressing climate change in response to the Sustainable Communities and Climate Protection Act (Senate Bill 375), land use and transportation integration with an emphasis on implementing priority development areas, priority conservation areas and complete street policies.
- Conducting equity analysis and outreach.
- Including performance-based evaluation of projects and programs in the CTP's proposed investment plan.

[Transportation Planning Update cont'd on page 4](#)

Policy News

Measure BB implementation

In the first 100 days after Measure BB passed in November 2014, Alameda CTC has made considerable progress in beginning to implement the [2014 Transportation Expenditure Plan](#). The agency has developed principles, project selection methodology as well as a two-year Measure BB allocation plan as part of its Comprehensive Investment Plan that integrates the planning and programming processes for transportation investments in Alameda County (read more in "Programming Updates").

Alameda CTC and the California State Board of Equalization (BOE) have agreed to language in agreements and the resolution required by the BOE for administration of Measure BB. The Commission approved the agreements and resolution that will be effective April 1, 2015.

In addition, Alameda CTC has updated its revenue forecasts, initiated all capital projects funded by Measure BB and updated the agreements with the local jurisdictions and transportation agencies that will receive monthly direct local distributions of Measure BB funding for transit, paratransit, local streets and roads and bicycle and pedestrian programs. These agreements will be executed before distribution begins.

The agency is also developing a project submission process for the next cycle of the Comprehensive Investment Plan, which will build on the Countywide Transportation Plan 2016 update efforts, and is scheduled to begin in spring 2015.

Director's Message cont'd

Countywide Goods Movement Plan — have also met major milestones, and we've been receiving valuable input from the public at a series of five public open houses in February and March. In addition, we've been preparing to embark on the 2016 update to the Countywide Transportation Plan (read more in "Transportation Planning Updates").

Other preparations include projections for our five-year Capital Improvement Plan. In the first cycle with Measure BB funding in addition to Measure B, Vehicle Registration Fee and other discretionary fund sources, Alameda CTC will be responsible for an estimated \$1.5 billion in capital project and program investments. This will result in transportation improvements throughout the county (see "Project Updates").

The finance team has also been planning for the implementation of Measure BB and developing a mid-year budget document for fiscal year 2014-15. Find out more about this and upcoming [contracting opportunities](#) in "Finance Updates."

Just in time for spring, I want to recognize the thousands of students who walked, biked, carpooled and took transit to the 107 schools that participated in the [Pollution Solution Golden Sneaker Contest](#). At the Commission meeting in March, we'll celebrate this next generation and award the school with the greatest increase in the number of students using green transportation modes.

Join us at the events listed on page 4.

Sincerely,

ARTHUR L. DAO
Executive Director
Alameda County Transportation Commission

Project Updates

Measure BB infusion soon to begin

Voters passed Measure BB in November 2014, and collection of the half-cent transportation sales tax by the Board of Equalization begins on April 1, 2015. Over the first five-year Capital Improvement Plan cycle, Alameda CTC will be responsible for an estimated \$1.5 billion in capital project and program investments. This estimate includes Measure B/Vehicle Registration Fee (VRF) direct local distributions, allocations to 2000 Measure B capital projects, [2014 Transportation Expenditure Plan](#) (2014 Plan) allocations and other discretionary fund sources. The first Comprehensive Investment Plan programming fund estimate (see "Programming Updates") includes approximately:

- \$738 million in direct local distributions to the cities, transit agencies and the county from 2000 Measure B, 2010 VRF and 2014 Measure BB.
- \$487 million specifically for capital projects from the 2000 Measure B and the 2014 Plan.
- \$275 million from regional, state and federal funds for projects and programs.

Projected FY2015-16 direct local distribution funding

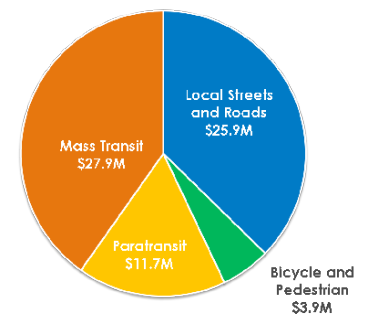
Alameda CTC will begin monthly direct local distributions to local jurisdictions and transit agencies, per the 2014 Plan, in summer or fall of 2015. It is projected that \$69.4 million will pass directly

to Alameda County recipients in fiscal year 2015-16 for local streets and roads, transit, paratransit and bicycle and pedestrian projects and programs.



Of the projected total, \$26 million will go directly to local streets and roads projects as cities and jurisdictions will have the opportunity to apply this funding stream to their locally prioritized projects to provide traffic relief, repave streets, fill potholes and upgrade local transportation infrastructure.

FY2015-16 Direct Local Distributions



For more information related to the direct local distribution funding to local jurisdictions and transit agencies, visit the [Measure BB Direct Local Distributions web page](#).



Finance Updates

Mid-year budget adjustment

Over the last month, the finance team has been developing a mid-year budget adjustment document for fiscal year 2014-15, which updates roll-forward balances for capital budgets and audited fund balances from FY2013-14. It also reflects changes in projects and programs and how actual revenues and expenditures are being realized, since the original budget was adopted in June 2014. Staff will present this update to the Commission for approval in March.

In addition, the team has been planning for the implementation of Measure BB, which funds the [2014 Transportation Expenditure Plan](#) that responds to the many transportation needs in Alameda County by specifying use of



Programming Updates

Comprehensive Investment Plan update

Last fall, the Commission established a policy framework and a \$1.5 billion funding envelope for Alameda CTC's Comprehensive Investment Plan (CIP) for fiscal year 2015-16 to FY2019-20. The CIP represents a strategic planning and programming document that translates voter-approved transportation expenditures plans, countywide modal studies and long-range transportation plans into a five-year action and investment plan.

This March, the Commission will review proposed projects and programs that achieve balanced countywide investments through all phases of project development. The recommendation aims to initiate project development and construction in the first two years of the CIP. When complete, the CIP will be a five-year investment roadmap of the agency's programming strategy to build and maintain Alameda County's transportation infrastructure.



the funds to restore and expand transit services, fix potholes, reduce highway congestion, expand bicycle and pedestrian access and connect transit with housing and jobs.

Contracting opportunities

Alameda CTC awarded a contract to the top-ranked firm for the City of Oakland Bikeway Network 2.0 Methodology project in February. Upcoming contracting opportunities include the development of the 2016 Countywide Transportation Plan, maintenance services for East Bay Greenway – 75th Avenue to 85th Avenue in Oakland, Tri-Valley Integrated Transit/Park-and-Ride Study, the planning and project approval/environmental document phase for East Bay Greenway, overall monitoring services for elements of the Congestion Management Program and the project approval/environmental document phase for the I-80 Gilman Project. For more information, visit the [Contracting Opportunities web page](#).

Lifeline Transportation Program – Cycle 4 recommendations

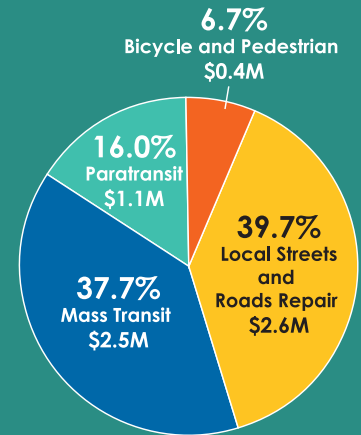
Also in March 2015, the Commission will consider approving the Cycle 4 Lifeline Transportation Program. The program funds projects that improve mobility for low-income residents of Alameda County. The programming recommendation includes approximately \$8.6 million of available discretionary funds and approximately \$8.9 million of Proposition 1B funds, distributed to eligible transit operators in the county by formula.

Lifeline projects are selected at the county level, based on Metropolitan Transportation Commission (MTC) program guidelines, and are tailored to meet locally identified needs, including fixed-route transit, transit stop improvements, senior and children's transportation, community shuttles, auto loan programs and mobility management activities. The Cycle 4 Lifeline Program recommendations will be forwarded to MTC on Commission approval. For additional information and program recommendations, refer to Alameda CTC's website.

Transportation Investments

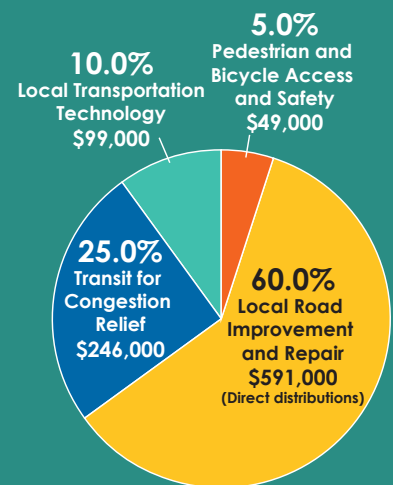
Measure B Program Distributions Since 2002

Alameda CTC has provided more than \$679.0 million in Measure B local program distributions since 2002. In December 2014, Alameda CTC disbursed \$6.6 million for the following four programs.



Vehicle Registration Fee Distributions Since 2011

Alameda CTC has dispersed nearly \$41.0 million in VRF Local Road Repair funds since 2011. In December 2014, Alameda CTC collected over \$0.9 million for the following four programs.



Total Measure B-funded Contracts*

Alameda CTC has funded more than \$837.5 million in contracts for Alameda County businesses since 2000.

* Total contract amount includes additional fund sources.

Outreach and Events

In March and April, Alameda CTC hosts or participates in these outreach events:

- BikeMobile events:
 - March 2 – Kolb Elementary School Golden Sneaker Kickoff in Dublin
 - March 11 – Fred T. Korematsu Discovery Academy in Oakland
 - March 21 – Maya Lin School in Alameda
 - March 28 – Laurel Elementary School in Oakland
 - April 11 – University Village in Albany
 - April 17 – Musick Elementary School in Newark
 - April 18 – Havens Elementary School in Piedmont
 - April 20 – Fredericksen Elementary School in Dublin
 - April 21 – Grimmer Elementary School in Fremont
 - April 22 – Bohannon Middle School in San Lorenzo
 - April 23 – Berkeley High School in Berkeley
 - April 24 – Glenview Elementary School in Oakland
 - April 25 – Bike East Bay Family Workshop; Earth Day Celebration in Alameda
 - April 26 – Berkeley Bike Festival; April 29 – Bowman Elementary School in Hayward
- March 3 – East Bay Economic Development Alliance Land Use and Infrastructure Committee meeting in Oakland
- March 4 – Paratransit presentation at the Dublin Grove Senior Ranch Apartments sponsored by the Livermore Amador Valley Transit Authority
- March 7 – Public Transportation Planning Open House St. Mary's Center in Oakland
- March 12 – Construction Infrastructure Program sponsored by Wendel, Rosen, Black & Dean, LLP in Oakland; Successful Youth Ridership Programs webinar sponsored by the California Transit Association; presentation to the Alameda Local Agency Formation Commission in Dublin
- March 13 – Leadership Oakland: Transportation and Environment at the Port of Oakland
- March 14 – St. Patrick's Day Celebration in Dublin; Transition Information Fair at the College of Alameda
- March 15 – St. Patrick's Day Celebration in Dublin
- March 17 – Senior Transit Fair at Pleasanton's Senior Center
- March 18 – Walk/Bike Castro Valley Town Hall Meeting; Association of Pedestrian and Bicycle Professionals (APBP) Webinar at Alameda CTC: Pedestrian and Bicycle Counting Programs
- March 20 – United Seniors of Oakland and Alameda County Annual Convention at Ashland Community Center in San Leandro;
- March 21 – Oakland Running Festival Expo in Oakland
- March 22 – Public Transportation Planning Open House at Fremont's Main Library
- March 25 – Castro Valley/Eden Area Business Expo
- March 26 – WTS San Francisco Bay Area Chapter Leadership Program
- April 1 – BART Train and Track Tour
- April 15 – APBP Webinar at Alameda CTC: Legal Rights and Issues for Pedestrians and Cyclists
- April 18 – 39th Annual Cinderella Classic at the Alameda County Fairgrounds
- April 22 – Construction Management Association of America: Alameda CTC Capital Program Update in San Francisco

Other News

Golden Sneaker Awards March 2-13

Thousands of students from 107 schools participated in the Pollution Solution Golden Sneaker Contest, sponsored by [Alameda County's Safe Routes to Schools Program](#) in early March. Students walked, biked, carpoled and took transit as much as possible for two weeks.

The classroom with the highest number of students using active or shared transportation to commute to and from school received the coveted "Golden Sneaker" trophy — in honor of their efforts to support cleaner air and a healthier environment.

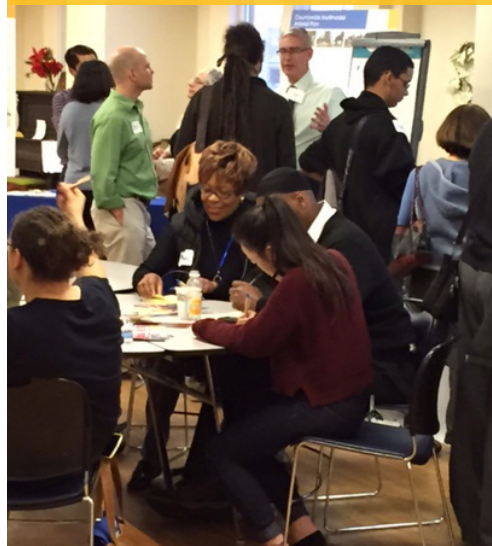
At its March 26 meeting, the Commission will present the ultimate prize, the "Platinum Sneaker" award to the school with the greatest increase in the number of students using green transportation modes. See the [press release](#) for details about the program.

Transportation Planning Updates cont'd from page 1

- Including a strategy to update the existing Community Based Transportation Plans.

Alameda CTC will also coordinate the 2016 CTP update with the Metropolitan Transportation Commission's 2017 Plan Bay Area update and participate in the Plan Bay Area update process.

Public Transportation Planning Open House at the Fruitvale-San Antonio Senior Center in Oakland



Committee Activities

March advisory committees

Highlights for March community advisory committees include the following:

- March 5 – The [Alameda County Technical Advisory Committee](#) approved the Countywide Transit Plan preliminary vision, goals and performance measures; the Countywide Goods Movement Plan Needs Assessment and evaluation strategies; and the Comprehensive Investment Plan project and program recommendations. In addition, the committee approved the Cycle 4 Lifeline Transportation Program.
- March 9 – The [Citizens Watchdog Committee](#) (CWC) received a Program Compliance Summary Report and the Alameda CTC FY2014-15 Second Quarter Investment Report. The committee also established a CWC Annual Report Subcommittee and discussed Alameda CTC's responses to four CWC requests for information.
- March 10 – The [Paratransit Technical Advisory Committee](#) reviewed the FY 2015-16 Program Plan applications and discussed mobility management, preparedness and other technical exchange items. The committee also received updates on East Bay Paratransit's Service Review Advisory Committee, on outreach and from staff.
- March 23 – The [Paratransit Advisory and Planning Committee](#) convened a Finance Subcommittee and Program Plan Review Subcommittees and received updates on Gap Grant Cycle 5 Progress Reports and the Cycle 5 AC Transit New Freedom match project. The committee also received a report from East Bay Paratransit.

Join Us for a Free Webinar

On Wednesday, April 15 from 12-1 p.m. (PST), join us at an Association of Pedestrian and Bicycle Professionals free webinar at Alameda CTC, 1111 Broadway, Suite 800. The topic is "Legal Rights and Issues for Pedestrians and Cyclists." Feel free to bring a brown-bag lunch. Alameda CTC hosts the event and covers the registration fee, so attendance is free to all.