

MARCH 2014

# EXECUTIVE DIRECTOR'S REPORT

## Director's Message

### ALAMEDA CTC'S INNOVATIVE 2014 TRANSPORTATION EXPENDITURE PLAN

will make transit more affordable and accessible, reduce traffic, improve air quality and create good jobs in Alameda County. Alameda CTC has already received unanimous approval of the [2014 Alameda County Transportation Expenditure Plan](#) by seven of the 14 cities in Alameda County and is scheduled to go to the remaining cities in the coming months. Visit the [calendar on our website](#) to see when Alameda CTC will be in your city to seek Plan approval.

Anticipated to be on the ballot in November 2014, this detailed 30-year Plan will generate nearly \$8 billion for essential transportation improvements in every city and throughout Alameda County. See "Policy News" for more information.

*Director's Message cont'd on page 2*

## TABLE OF CONTENTS

**1** [Transportation Planning Updates](#)  
2013 Congestion Management Program implementation plan

[Policy News](#)  
2014 Plan outreach and education

**2** [Project Updates](#)  
BART Oakland Airport connector

**3** [Finance Updates](#)  
Inaugural bond sale a success

[Programming Updates](#)  
Measure B encourages biking this spring

**4** [Outreach and Events](#)  
March and April activities

[Committee Activities](#)  
March advisory committee highlights

[Other News](#)

## Transportation Planning Updates

### 2013 Congestion Management Program implementation plan

As the congestion management agency for Alameda County, Alameda CTC biennially develops and updates a Congestion Management Program (CMP) that includes strategies, programs and projects to address congestion issues, improve the performance of the county's multimodal transportation system and strengthen the integration of transportation and land use planning. In February 2014, Alameda CTC developed a plan to implement the 2013 CMP that the Commission adopted in October 2013.

The [CMP implementation plan](#) provides a high-level summary of the specific steps that the agency will undertake in the next two years and the progress made to date to implement the actions and recommendations included in the 2013 CMP for each CMP element. Notable progress has already been made on several key actions:

- New technology-based, travel-time data for roadway monitoring.
- A travel demand management website that includes the improved [Guaranteed Ride Home Program](#).
- Implementation of the [Priority Development Areas Investment and Growth Strategy](#), including the Sustainable Communities Strategy Technical Assistance Program.
- Countywide Travel Demand Model update to incorporate 2010 U.S. Census and Plan Bay Area data.
- California Environmental Quality Act guideline updates involvement regarding changes to transportation impact analyses.

*Transportation Planning Updates cont'd on page 4*

## Policy News

### 2014 Plan outreach and education

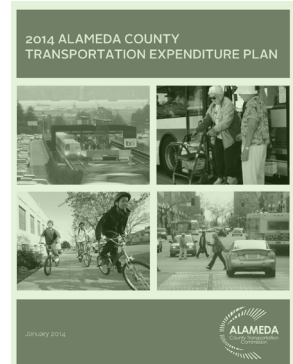
In February and March 2014, Alameda CTC initiated presentations on the [2014 Transportation Expenditure Plan](#) (Plan) to seek Plan approvals from Alameda County city councils. To date seven city councils have unanimously approved the Plan. See the [calendar](#) for upcoming city council presentations.

Alameda CTC has developed Plan fact sheets for AC Transit, BART and the local jurisdictions that will receive transportation funding, and is creating additional information materials that will educate the public about key priorities in the Plan (see page 4 for the outreach event schedule).

The 2014 measure on the November 2014 ballot will generate nearly \$8 billion for essential transportation improvements in every city and throughout Alameda County if approved by two-thirds of voters. The Plan will:

- Expand BART, bus and commuter rail for reliable, safe and fast services.
- Keep fares affordable for seniors, youth and people with disabilities.
- Provide traffic relief on local streets and highways.
- Improve air quality and provide clean transportation.
- Create good jobs within Alameda County.

For more information, visit the [2014 Plan](#) web page.



**Director's Message cont'd**

The [implementation plan](#) for the 2013 Congestion Management Program is another planning effort that aims to improve the performance of the county's multimodal transportation system (read more in "Transportation Planning Updates").

Funded by the 2000 Transportation Expenditure Plan, the automated [BART Oakland Airport Connector](#) will open later this year and provide train-to-plane access from BART's Coliseum Station to the Oakland International Airport. It's a great example of another project that has created local jobs and will improve our transportation system (see "Project Updates").

To expedite project delivery, I flew to Boston and New York with the Commission chair and director of finance to raise interest in Alameda's inaugural bonds for the Measure B capital program and to price the bonds. The trip was a success, and debt was issued at a low interest rate. Find out more about this as well as upcoming [contracting opportunities](#) in "Finance Updates."

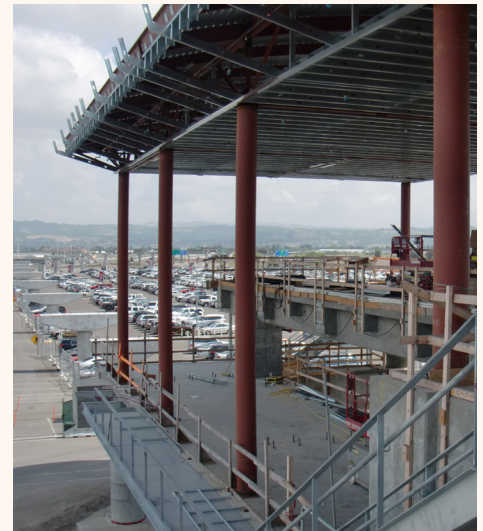
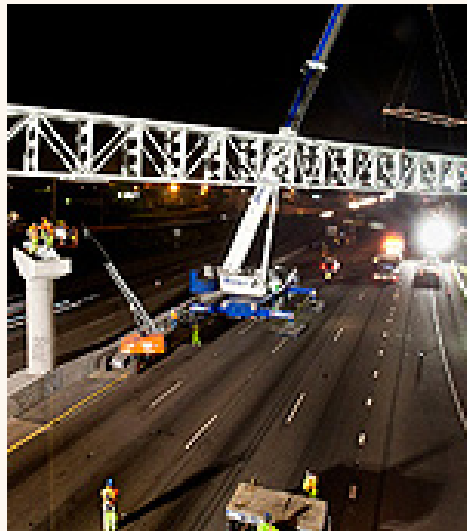
Just in time for spring, Alameda CTC has funded a bicycle education and safety program with [Measure B bicycle and pedestrian grant](#) funds. In "Programming Updates," read about this program as well as Measure B-funded volunteer driver programs that give seniors much needed rides.

I hope to see you at one of our outreach events in March and April (see page 4); it's always a pleasure to have our Commissioners share with the public the benefits and opportunities provided by Alameda CTC.

Sincerely,

ARTHUR L. DAO  
Executive Director, Alameda CTC

**BART Oakland Airport Connector Project**



**Project Updates**  
**BART Oakland Airport Connector**

The BART Oakland Airport Connector (OAC) opens later this year. The successful delivery of this regionally significant project is due to the considerable funding investment of the 2000 Measure B sales tax program. The \$484 million project will provide train-to-plane access from the existing BART system to the Oakland International Airport.

This innovative project applies advances in cable propulsion technology to the tried-and-true cable car system, resulting in an efficient and environmentally friendly 3.2-mile long transit network link to the Oakland International Airport.

BART will operate the fully automated, driverless, all-electric cars that will move passengers from BART's Coliseum Station to the new Oakland Airport Station in approximately eight minutes one-way. The raised platform and rail will offer riders a safe and reliable transition between services above the hustle and bustle of the vehicular traffic below. Testing began in January 2014. The BART OAC will open for service to the public this fall.

For more information on the [BART OAC project](#), watch the [OAC vehicle installation video](#) and the [guideway video](#), or visit our [projects web page](#).

## Finance Updates

### Inaugural bond sale a success

During February, the Commission chair and Alameda CTC's executive director and director of finance traveled to Boston to present information about Alameda CTC to institutional investors prior to the sale of bonds. This strategy helped get the agency's name out to the investment community, raised interest in the bonds and allowed the team to answer questions about the Alameda CTC and the bonds before the sale.

The team then traveled to New York to price the bonds, which took place on February 10, 2014 for a final closing on March 4, 2014. Alameda CTC issued bonds at varying coupon

rates averaging 4.293 percent, with a par amount of \$137,145,000, at a premium for total bond proceeds of \$157,480,856. The final maturity on the bonds sold is March 1, 2022. Alameda CTC's inaugural bonds priced extremely well, as the team was able to take advantage of the low-interest-rate environment. The all-in total interest cost of issuing the bonds was 1.578 percent.

### Contracting opportunities

Alameda CTC anticipates advertising four RFPs/requests for qualifications for services related to various activities by April 2014. For more information, visit the [Contracting Opportunities web page](#).

## Programming Updates

### Measure B encourages biking this spring

Alameda CTC awarded \$240,000 in Measure B bicycle and pedestrian grant funds to a nonprofit organization for the Bike-Go-Round/ Neighborhood Bicycle Centers education and distribution program. This program encourages bicycle transportation among youth and low-income individuals living near transit centers.



Starting in January 2014, the grant recipient will conduct 24 bicycle education and distribution programs over the next two years to promote proper safe riding techniques and bicycle maintenance procedures. Repair, distribution and training services will also be available three days a week through the program's Neighborhood Bicycle Centers to educate and support an additional 3,000 low-income bike commuters. For more information, visit the [Cycles of Change website](#).

### Rides for seniors in North County

The Measure B sales tax provides funding for several volunteer driver programs in Alameda County to fill critical gaps in transportation services for seniors and people with disabilities. These programs provide individuals who no longer drive and cannot access public transportation with door-to-door transportation to grocery stores, medical facilities and community centers.

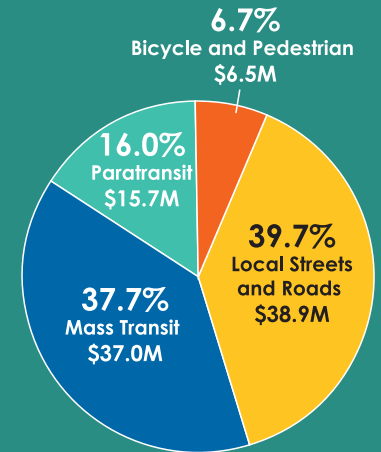
In an effort to establish volunteer driver programs in North County, Alameda CTC awarded \$150,000 in Measure B funds to the nonprofit organization Senior Helpline Services for its Rides for Seniors Program. Since its initiation in July 2013, the program has registered approximately 40 volunteer drivers and 31 clients, and provided an average of 60 monthly rides to isolated seniors and other homebound individuals in North County. With expanded outreach efforts to various community groups and senior centers in the spring, Senior Helpline Services anticipates a growth in rides to approximately 150 rides per month.



## Transportation Investments

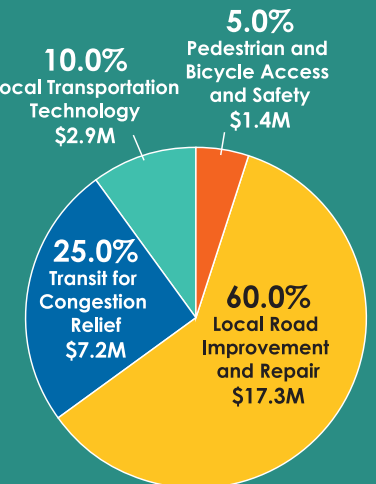
### Measure B Program Distributions Since 2000

Alameda CTC has provided more than \$939.1 million in Measure B direct local program distributions since 2000. As of December 2013, Alameda CTC has distributed more than \$98.1 million in FY13-14.



### Vehicle Registration Fee Distributions Since 2012

Alameda CTC has distributed more than \$28.8 million in VRF direct local program distributions through December 31, 2013.



### Total Measure B-funded Contracts\*

Alameda CTC has funded more than \$837.5 million in contracts for Alameda County businesses since 2000.

\* Total contract amount includes additional fund sources.

## Outreach and Events

In March and April, Alameda CTC hosts or participates in the following events:

- City Council Meetings\*:  
March 3 – City of San Leandro  
March 4 – City of Oakland  
March 10 – City of Livermore  
March 11 – City of Berkeley  
March 18 – City of Dublin  
March 25 – City of Union City  
March 27 – City of Newark  
April 15 – City of Emeryville  
April 21 – City of Piedmont
- March 6 – Silicon Valley Leadership Group Transportation Evaluation Roundtable
- March 15 – 31st Annual St. Patrick's Day Celebration in Dublin; Transition Information Faire – Developmental Disabilities Council in Alameda
- March 17 – Senior Transit Fair at the Pleasanton Senior Center in Pleasanton
- March 19 – Association of Pedestrian and Bicycle Professionals (APBP) Webinar at Alameda CTC: All In: The Value of Investing in Complete and Green Streets
- March 20 – Business Expo in Castro Valley sponsored by the Castro Valley/Eden Area Chamber of Commerce; United Seniors of Oakland and Alameda County Annual Convention at St. Mary's Center in Oakland
- March 22 – Oakland Running Festival Expo at the Oakland Marriott Hotel
- April 5 – 38th Annual Cinderella Classic at the Alameda County Fairgrounds in Pleasanton
- April 9 – 2014 EarthEXPO at Frank Ogawa Plaza with the BikeMobile; WTS San Francisco's Transportation Executives Regional Forum in Oakland
- April 16 – APBP Webinar at Alameda CTC: Public Health Benefits of Active Transportation
- April 24 – Senior Resource Fair at the Albany Senior Center
- April 29 – Business Expo in the City of Alameda sponsored by the Alameda Chamber of Commerce

\*Alameda CTC provides an update on the [2014 Alameda County Transportation Expenditure Plan](#).

## Transportation Planning Updates cont'd from page 1

The agency has also begun development of three countywide multimodal plans, a Countywide Goods Movement Plan, a Countywide Transit Plan, and a Countywide Multimodal Arterial Corridor Plan, which will collectively contribute to multimodal system performance improvement and implementation of the 2013 CMP.

## Committee Activities

Highlights for March community advisory committees are as follows:

March 6 – The [Alameda County Technical Advisory Committee](#) approved the Sustainable Communities Technical Assistance Program draft project recommendations, the Alameda CTC Transportation Fund for Clean Air Program Guidelines and the Countywide Bicycle and Pedestrian Advisory Committee Projects Review guidelines. Members also received updates on city approvals of the [2014 Transportation Expenditure Plan](#), the legislative program and implementation of Senate Bill 743.

March 10 – The [Citizens Watchdog Committee](#) (CWC) established a CWC Annual Report subcommittee and reviewed annual report e-blast outreach data and cost estimates for ad placements on AC Transit and BART. The committee also received an update on the Projects and Programs Watch List and received a fiscal year 2013-2014 mid-year budget update.

March 24 – The [Paratransit Advisory and Planning Committee](#) received updates on the Hospital Discharge Transportation Service and the Wheelchair Scooter Breakdown Transportation Service, the 2014 Annual Mobility Workshop and outreach efforts. The committee also received a presentation on the new BART cars, a Paratransit Gap Grant Cycle 5 program report from Alzheimer's Services of the East Bay and a report from the Fiduciary and Finance Subcommittee, as well as messaging for the 2014 Transportation Expenditure Plan.

## Other News

### Alameda County jurisdictions' Complete Streets policies ranked top in the nation

Three Alameda County jurisdictions ranked nationally among the 15 [Best Complete Streets Policies of 2013](#). Hayward, Livermore and Oakland received this ranking from the National Complete Streets Coalition, which considers the strength of adopted policy language from local, county, regional and state policies. In 2013, all 15 Alameda County jurisdictions were among more than 80 communities nationwide that adopted Complete Streets policies, bringing the national total to 610 jurisdictions.

## Join Us for a Free Webinar

On Wednesday, April 16 from 12-1 p.m. (PST), join us at an Association of Pedestrian and Bicycle Professionals free webinar at Alameda CTC, 1111 Broadway, Suite 800. The topic is "Public Health Benefits of Active Transportation." Feel free to bring a brown-bag lunch. Alameda CTC hosts the event and covers the registration fee, so attendance is free to all.

