

MARCH 2013

EXECUTIVE DIRECTOR'S REPORT

Director's Message



AT THE COMMISSION RETREAT on February 22, 2013, Commissioners focused on critical planning work to identify, quantify and prioritize the transportation needs of the county, which will affect jobs, transit, housing and economic growth. A few key themes that emerged are the need for specific and focused planning efforts, partnering to set policies, and engaging with federal, state and

[Director's Message cont'd on page 2](#)

TABLE OF CONTENTS

1 Transportation Planning Updates Studies inform Countywide Transportation Plan

Policy News

Planning, programming, monitoring policy framework

2 Project Updates Bay Area Express Lanes increases mobility

3 Programming Updates Large number of grant applications confirms need for transportation funding

Finance Updates

Fiscal year 2012-2013 mid-year budget updates

4 Outreach and Events March and April activities

Committee Activities

Highlights of March advisory committees

Other News

Local complete streets policy update

Transportation Planning Updates

Studies inform Countywide Transportation Plan

One outcome from the Commission retreat in February 2013 is Alameda CTC's renewed focus on transportation planning. Long-range planning is the cornerstone of project and program identification and prioritization to meet the transportation vision and goals specified in the Countywide Transportation Plan. Effective planning will allow Alameda CTC to identify needs, establish priorities and advocate for transportation investments critical to Alameda County.

Alameda CTC is moving forward with updates to the Congestion Management Program and will bring recommendations for many plans that will allow Alameda CTC to identify needs, establish priorities and set performance measures:

- **Comprehensive Countywide Transit Plan** to assess existing transit capital, operations and service needs, including paratransit needs, and identify transit investment opportunities.
- **Goods Movement Plan** to assist in advancing goods movement throughout and delivery within and beyond Alameda County and identify investment opportunities.
- **Multimodal Arterial Corridor Plan** to maximize mobility and management of regionally significant arterial corridors, which carry the second-highest volumes (after highways) of automobiles, as well as transit, bicycles and pedestrians.
- **Countywide Community Based Transportation Plan** to update and

[Transportation Planning Updates cont'd on page 2](#)

Policy News

Planning, programming, monitoring policy framework

Alameda CTC is continuing work on developing a planning, programming and monitoring policy framework that supports enhanced project/program planning, funding and delivery in Alameda County. This integrated framework will allow Alameda CTC to effectively coordinate the investment of federal, state, regional and local funds for capital projects, operations and program implementation under Alameda CTC's purview. The Commission will review this framework in March 2013.

This policy framework will allow Alameda CTC to:

- Fully integrate its practices to further streamline agency planning, programming and delivery efforts.
- Ensure effective feedback loops into decision-making through planning, data collection and partnerships.
- Improve the public understanding of the benefits of projects and programs delivered by Alameda CTC.
- Support an ongoing process of contracting opportunities that will provide local jobs and stimulate economic development in Alameda County.

Alameda CTC will present future policies to the Commission in the coming months to address implementation of each of the policy framework elements: planning, strategic investments, implementation and monitoring, data collection and feedback.

Director's Message cont'd

regional agencies in advocating for transportation policies that benefit the county. Read "Transportation Planning Updates" for more information about new plans that will come before the Commission and "Policy News" for information on the planning, programming and monitoring framework that will support these efforts.

Alameda CTC is advancing the new express lanes in the County. Find out more about how Bay Area express lanes are increasing mobility in "Project Updates."

In March 2013, Alameda CTC released the Transportation Fund for Clean Air Call for Projects — more than \$1.8 million is available for projects that reduce motor vehicle emissions. [Applications are due on Friday, April 5, 2013](#). Also in March, Alameda CTC received numerous applications for three previous calls for projects (see "Programming Updates").

The fiscal year 2013-2014 budgeting process has been initiated. In addition, Alameda CTC is issuing seven RFPs for contracting opportunities this spring, along with two invitations to bid for construction contracts (see "Finance Updates").

Other news: I'm pleased that all jurisdictions in Alameda County have adopted complete streets policies, supporting the needs of all users on streets and roads. We look forward to extensive outreach in Alameda County this spring to share major progress at Alameda CTC with the public and our partners (see page 4 for details).

Sincerely,

ARTHUR L. DAO
Executive Director, Alameda CTC

Project Updates

Bay Area Express Lanes increase mobility

Express or high-occupancy toll (HOT) lanes have recently emerged as an innovative transportation solution to increase mobility along some of the Bay Area's most congested freeway corridors. As a regional partner to the Metropolitan Transportation Commission (MTC) and as managing agency of the first operational express lane in Northern California, Alameda CTC has been at the forefront of express lane development and implementation.

In the fall of 2010, Alameda CTC delivered the 14-mile, I-680 Southbound Express Lane as the region's first express lane facility. Since the opening of the express lane facility, over one million solo drivers have reached their destinations by traveling at speeds typically 10-15 miles per hour faster than speeds motorists experience in the general-purpose lanes during peak commute hours. In addition, toll revenues continue to meet and exceed projections.

In fall 2011, MTC submitted its [Regional Express Lane Network Plan](#) to the California Transportation Commission, which approved the following transportation corridors:

- Contra Costa/Alameda – I-80
- Solano – I-80

Transportation Planning Updates cont'd from page 3

identify new transportation needs for low-income communities, including those defined as Communities of Concern by MTC.

- **Comprehensive Transportation Demand Management Plan** to identify and support programs that manage demands such as parking management, the Guaranteed Ride Home Program and Safe Routes to Schools.

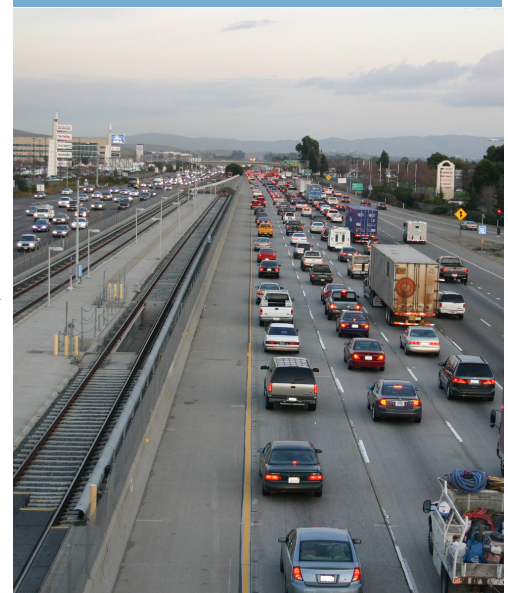
Alameda CTC is also providing funding to support local jurisdictions with their planning efforts through a Sustainable Communities Technical Assistance Program that will become available this year. For more information, visit the [Planning web page](#).

- Santa Clara – Hwy-85/SR-237
- Santa Clara/San Mateo – Highway 101
- Alameda – I-580
- Solano/Contra Costa/Alameda – I-680
- Alameda/Santa Clara – I-880

Approximately 90 miles of the planned 550-mile Express Lane Network will run through Alameda County. The next planned express lanes in Alameda County include:

- [I-580 Westbound HOV Lane - East Segment](#) and [West Segment Projects](#): Construction of an HOV lane, which will convert to an express lane facility by fall 2015, in the westbound direction along the I-580 corridor is scheduled to begin this spring.
- [I-580 Eastbound](#) and [Westbound Express Lanes](#) in the Tri-Valley corridor: Currently in the design phase, the newly constructed eastbound HOV lane and the future westbound HOV lane will convert to express lane facilities by fall 2015.
- [I-680 Northbound Express Lane Project](#): This project is in the environmental phase and will complement the existing operational I-680 southbound express lane.

I-580 Tri-Valley Corridor



Programming Updates

Large number of grant applications confirms need for transportation funding

Alameda CTC is currently reviewing application proposals from three calls for projects in March 2013. Due March 4, 2013, the [Paratransit Gap Grant Cycle 5 Program](#) received 17 applications, totaling \$3.6 million. This highly competitive application pool is pursuing approximately \$2.0 million available in Measure B Paratransit discretionary funding. Alameda CTC will fund the most comprehensive projects that support mobility management, enhance consumers' access to transit services and facilitate program coordination between other activities or agencies.

Due March 11, 2013, the Alameda CTC received four applications, totaling \$0.8 million as part of the [Federal Transit Administration Section 5310 Grant Program](#) managed in California by the California Department of Transportation and the Metropolitan Transportation

Commission. The \$13.0 million program will provide capital grants for vehicles/radios/dispatching software to assist private nonprofit corporations and public agencies to provide transportation services for elderly individuals and individuals with disabilities.

Due March 15, 2013, the [Coordinated Funding Program](#) received over 65 applications, totaling more than \$116.0 million. This grant program includes a total of \$65.2 million from Federal One Bay Area Grant (OBAG), Measure B transportation sales tax and Vehicle Registration Fee funding sources. Alameda CTC will assess projects on their ability to improve transportation, support transit oriented development and enhance mobility and access for Alameda County residents and businesses.

TFCA Call for Projects FY 13-14

In early March 2013, Alameda CTC released a fiscal year 2013-2014 Transportation Fund for Clean Air (TFCA) County Program Manager Fund Call for Projects. As the TFCA program manager for Alameda County, Alameda CTC is responsible for programming

Programming Updates cont'd on page 4

Finance Updates

FY 12-13 mid-year budget updates

Over the last month, the finance department has been working toward updating the fiscal year 2012-2013 budget to reflect changes in projects and programs since the original budget was developed, as well as to reflect how actual revenues and expenditures are being realized as the fiscal year progresses. This mid-year budget update allows for estimates of the original adopted budget to be "trued up," for example, to carry forward the audited fund balance information by fund type.

During the mid-year budget update process, the finance department accumulates information in all areas of Alameda CTC's responsibilities including planning, programming, capital projects and administration, and aligns that information with our available resources to present a balanced and sustainable budget.

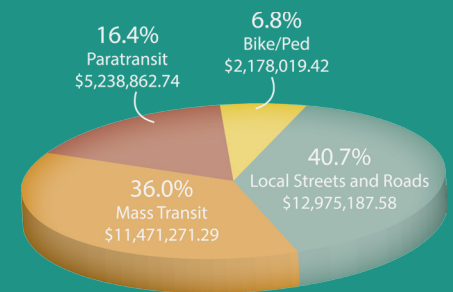
This proposed budget update will go before the Commission for approval in March 2013.

Regarding contracting opportunities, the Commission approved the issuance of several requests for proposals (RFPs) at the February 2013 meeting. These RFPs include the following: state legislative advocacy services; federal legislative advocacy services; investment advisory services; and policy, legislation, communications and administrative support services. In addition to these four contracting opportunities, Alameda CTC anticipates issuing three RFPs for professional services and two invitations for bidders for construction contracts in the spring of 2013. For more information, visit [Contracting Opportunities](#) on the Alameda CTC website.

Transportation Investments

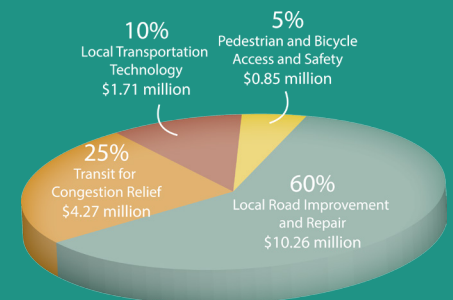
Measure B Program Distributions Since 2000

In the first half of fiscal year 2012-2013, Alameda CTC has already distributed more than \$31.86 million, and has distributed \$606.41 million in Measure B pass-through funds since 2000.



Vehicle Registration Fee Distributions Since 2012

Alameda CTC distributed over \$17.09 million in VRF pass-through funds through December 31, 2012.



Total Measure B-funded Contracts*

Alameda CTC has funded more than \$820.8 million in contracts for Alameda County businesses since 2000.

* Total contract amount includes additional fund sources.

Outreach and Events

In March and April, Alameda CTC is hosting or participating in these outreach events:

- March 1 – BikeMobile at Irvington High School in Fremont
- March 4 – Start of the **Golden Sneaker Contest** (60 Alameda County schools participate; awards presented late-March/early April)
- March 9 and 16 – BikeMobile at Parkmont Elementary School in Fremont and Manzanita Seed School in Oakland
- March 14 – United Seniors of Oakland and Alameda County Annual Convention at the Oakland Zoo
- March 16 – Developmental Disabilities Planning and Advisory Council Transition Information Faire in the City of Alameda
- March 16 – St. Patrick's Day Celebration in the City of Dublin
- March 20 – Association of Pedestrian and Bicycle Professionals (APBP) Webinar at Alameda CTC: Dynamics of Effective Advisory Committees
- March 20 – Alameda CTC presentation at the City Manager's Association meeting in the City of San Leandro
- March 21 – United Seniors of Oakland and Alameda County Annual Convention at the Oakland Zoo
- March 23 – Oakland Running Festival Expo at the Oakland Marriott Hotel
- March 30 – Alameda CTC at the Union City Farmers' Market
- April 6 – Cinderella Classic at the Alameda County Fairgrounds in Pleasanton
- April 10 – City of Oakland 2013 EarthEXPO at Frank Ogawa Plaza
- April 16 – BikeMobile at Dougherty Elementary School in the City of Dublin
- April 17 – APBP Webinar at Alameda CTC: Economic Benefits of Walkable and Bike Friendly Communities
- April 20 – City of Emeryville 2013 Earth Day at Doyle Hollis Park
- April 20 – Bikes in Berkeley Festival at Washington Elementary School
- April 21 – Fremont Freewheelers Bicycle Club Primavera Century Bicycle Tour
- April 25 – Senior Resource Fair at the Albany Senior Center



Committee Activities

Highlights of February advisory committees

In March, the following community advisory committees met. Highlights include:

- March 5 – The **Alameda County Technical Advisory Committee** approved the final Priority Development Area Investment and Growth Strategy, discussed the policy framework for planning, programming and monitoring; and received updates on the Metropolitan Transportation Commission's Express Lane Network, Complete Streets local policy approvals and the Local Streets and Roads Working Group.
- March 11 – The **Citizens Watchdog Committee (CWC)** reviewed and provided feedback on the Program Compliance

Summary Report Executive Summary and established a subcommittee to draft the CWC Annual Report. The committee also received information on the mid-year budget updates, the Projects and Programs Watchlist process, the One Bay Area Grant Program and Commission actions.

- March 25 – The **Paratransit Advisory and Planning Committee (PAPCO)** received updates on Finance Subcommittee activities, the Hospital Discharge Transportation Service and the Wheelchair and Scooter Breakdown Transportation Service programs, the GAP Grant Cycle 5 Program, the 10th Annual Mobility Workshop and the One Bay Area Grant Program.

Other News

Local complete streets policy update

Local jurisdictions in Alameda County are required to adopt complete streets policies or demonstrate that their general plan is compliant with the state Complete Streets Act to meet the Metropolitan Transportation Commission's One Bay Area Grant (OBAG) requirement as well as the Alameda CTC's Master Program Funding Agreement requirement for a local complete streets policy.

To date, all 15 jurisdictions in the county have met, or are scheduled to meet, the complete streets requirement for adopting a local policy or having a compliant general plan.

Programming Updates cont'd from page 3

40 percent of the \$4 vehicle registration fee collected in Alameda County for this program. Approximately \$1.8 million in funding is available.

Eligible projects include shuttle operations, rideshare programs, clean fuel vehicles, traffic management systems, bike and pedestrian projects and other infrastructure improvements that reduce motor vehicle emissions. See the Alameda CTC's [grants web page](#) for more information.

Join Us at the Next Free Webinar on April 17

Alameda CTC hosts the next Association of Pedestrian and Bicycle Professionals monthly webinar at 1333 Broadway, Suite 300 on Wednesday, April 17 from 12 to 1 p.m. (PST). The topic is "Economic Benefits of Walkable and Bike Friendly Communities." Feel free to bring a brown bag lunch. The Alameda CTC pays the registration fee, so attendance is free to all.