



JUNE 2015

EXECUTIVE DIRECTOR'S REPORT

Director's Message

Development of the 2016 Alameda Countywide Transportation Plan is progressing forward this month with the solicitation of applications for projects and programs for potential inclusion in the Plan. Alameda CTC held the first of [two public workshops](#) on June 4th with local public agencies and other organizations to review the Long Range Plan development process, and to clarify and facilitate the projects/programs application process (see "Transportation Planning Updates")

In parallel with the development of the 2016 Countywide Transportation Plan (or the Long Range Plan), the development of the first (FY2015-16) [Comprehensive Investment Plan](#) (CIP) is also proceeding. The CIP is a five-year and biennial programming and allocation plan that contains projects and programs consistent with the Long Range Plan. The CIP identifies more than \$1.2 billion

[Director's Message cont'd on page 2](#)

TABLE OF CONTENTS

- 1 **Transportation Planning Updates**
Countywide Transportation Plan call for projects and workshops
- 2 **Policy News**
Comprehensive Investment Plan
Project Updates
I-880/23rd-29th Avenues Interchange Improvements Construction Update
- 3 **Finance Updates**
Overall Work Program and budget
Programming Updates
Measure B/VRF compliance reporting
- 4 **Outreach and Events**
Activities in June and July
Committee Activities
June highlights of advisory committees
Other News
iBike Campaign 2015

Transportation Planning Updates

Countywide Transportation Plan call for projects and workshops

The Alameda County Transportation Plan (CTP) update scheduled for adoption in June 2016 will develop a performance-based, long-range plan through 2040 for the county's multimodal transportation network. In June 2015, Alameda CTC began soliciting applications for projects and programs to be included in the 2016 CTP update.

Public agencies or nonprofit organizations (with sponsorship from a public agency that has jurisdictions over the area in which the transportation project/program is located) may submit applications. Alameda CTC hosted an application workshop on June 4, 2015 and will host a second workshop on July 9, 2015 to inform applicants of the call for projects process. For more information, visit the [Countywide Transportation Plan web page](#).

Multimodal plans update

Alameda CTC is currently developing three multimodal plans that will feed into the CTP: Countywide Transit Plan, Countywide Multimodal Arterial Plan and the Countywide Goods Movement Plan.

These plans are scheduled to be complete prior to the CTP update and will help shape the future of transportation in Alameda County, including public transit, major streets and roadways and trucking, goods movement and shipping.

Policy News

Comprehensive Investment Plan

The fiscal year 2015-2016 (FY2015-16) [Comprehensive Investment Plan](#) (CIP) identifies more than \$1.2 billion in anticipated transportation funding from voter-approved state, regional and federal fund sources. Over a five-year horizon, the CIP strategically matches funding sources to targeted transportation priorities in Alameda County's transportation system.

The CIP includes a two-year allocation plan of over \$478 million and serves as Alameda CTC's strategic plan required by voter-approved expenditure plans. In addition, the CIP includes several policies that guide Alameda CTC's programming and allocations.

One of the CIP goals is to facilitate strategic programming of funds under Alameda CTC's purview. By consolidating the call for projects process, local jurisdictions and transportation agencies can focus on delivering their projects, while Alameda CTC oversees the programming and recommends the best fund source or combination of sources to fund these projects.

The Commission will receive the CIP for approval in June 2015. Annually thereafter, Alameda CTC will update the expenditure and revenue assumptions in the CIP. Biennially, Alameda CTC will update the full CIP and notify project sponsors of the enrollment period to add new projects and programs to the CIP.

Director's Message cont'd

in funding from federal, state, regional and local sources for critical near-term transportation projects and programs in the County. Over a five-year period, the CIP strategically programs all projected available funding sources to ready and important transportation improvements to relieve congestion and enhance mobility (see "Policy News").

The CIP will consolidate and streamline the many calls for projects and programming actions into fewer ones to reduce the time- and resource-consuming administrative burden on local jurisdictions and transportation agencies, so that they can focus on delivering their projects and programs rather than respond to many calls for projects for funding opportunities.

Alameda CTC is aggressively managing and delivering many major capital projects in construction. This month, the \$100 million [I-880 North Safety and Operational Improvements project](#) featured in "Project Updates," is making significant progress in construction. The majority of funding for this project comes from the statewide 2006 Proposition 1B Trade Corridor Improvements Fund.

In addition, the finance team is implementing a new financial database to facilitate better tracking of all the fund sources that Alameda CTC manages. The team has also developed a balanced and sustainable budget and an Overall Work Program that will guide the agency's efforts for FY2015-16. Find out more about this and upcoming [contracting opportunities](#) in "Finance Updates."

This summer, Alameda CTC will continue its efforts to educate the public about the projects and programs we deliver that are improving transportation throughout Alameda County. See page 4 for the outreach events that may be of interest to you.

Sincerely,

ARTHUR L. DAO
Executive Director
Alameda County Transportation Commission

Project Updates

I-880/23rd-29th Avenues Interchange Improvements Construction Update

Interstate 880 is a major north-south freight corridor connecting the Port of Oakland, Oakland International Airport and multiple economic centers in the Bay Area. Major bottlenecks occur on I-880 at the existing overcrossings of 23rd and 29th Avenues in the City of Oakland due to the low vertical clearance below the overcrossings and sub-standard existing interchange and on- and off-ramp configurations.

The I-880 North Safety and Operational Improvements project includes replacement of these freeway overcrossing structures and safety improvements to the northbound on and off ramps as well as the freeway mainline. A new soundwall under construction on I-880 in the northbound direction between 29th and 23rd Avenues will provide noise protection for the local community.

The California Department of Transportation (Caltrans) is managing

construction of the project. In April 2015, the 29th Avenue Overcrossing, which spans I-880 between Alameda and Oakland, was closed and detours were put in place to facilitate demolition of the bridge and to make way for a new three-lane structure with improved freeway access and local connections.

Public outreach meetings in the cities of Alameda and Oakland provided a forum to advise local residents of the traffic circulation impacts and address any concerns. Crews safely completed the overpass demolition, and reconstruction of the new replacement structure is estimated to last approximately 18 months, through fall 2016.

Advance-warning changeable message signs and detour signs assist motorists traveling in the area and upgrades to existing signals and striping configurations accommodate the increase in traffic due to the closure. For more information, visit the [Caltrans project web page](#) or the [Alameda CTC Projects web page](#).

I-880 North Safety and Operational Improvements Project at the 29th Avenue Overcrossing

Pre-demolition



Post-demolition



Finance Updates

Overall Work Program and budget

Throughout May 2015, the finance team worked to finalize the Overall Work Program (OWP) for FY2015-16, which will guide the agency's work and takes into account the requirements of Measure BB. The OWP will provide the Commission with information on major agency workflow activities in core functions to meet agency goals and will ensure that the agency is able to meet all needs of the Commission for FY2015-16. The OWP will go to the Commission for approval in June with the final FY2015-16 Budget.

In addition, the finance team continued to work on implementing a new financial database, including developing a new account code string and assigning values, mapping historical data and installing a test database to begin the import phase.

Contracting opportunities

Recent and upcoming Alameda CTC contracting opportunities include the planning and project approval/environmental document phase for the East Bay Greenway project;

the project approval/environmental document and final design plans, specifications and estimates phases for the I-80 Gilman Interchange Improvement Project; project development and delivery of the Alameda County Affordable Student Transit Pass Program; the plans, specifications and estimates phase for the I-680 Sunol Express Lanes – Northbound (Phase 1 Modified); system integration design and installation services for the I-680 Sunol Express Lanes – Northbound project; maintenance services for the East Bay Greenway project; and overall monitoring services for elements of the Congestion Management



Program. For more information, visit the [Contracting Opportunities web page](#).

Programming Updates

Measure B/VRF compliance reporting

Each year, Alameda CTC requires Measure B and Vehicle Registration Fee (VRF) direct local distribution fund recipients to submit an audited financial statement and a compliance report that accounts for Measure B/VRF-funded improvements. Alameda CTC reviews these reports to confirm that voter-approved transportation dollars are supporting local streets and roads, bicycle and pedestrian, paratransit and mass transit improvements within Alameda County.

For the Measure B/VRF reporting fiscal year 2013-2014 (FY2013-14), Alameda CTC, in conjunction with the Citizens Watchdog Committee, reviewed the recipients' reports and found them to be in compliance with Alameda CTC's financial and compliance reporting requirements. In FY2013-14, recipients received \$66.7 million in direct local distributions, of which \$63.9 million was expended on their transportation

improvements and transit operations. The recipients' [Measure B and VRF FY2013-14 Compliance Reports](#) are available on Alameda CTC's website.

TFCA FY2015-16 call for projects update

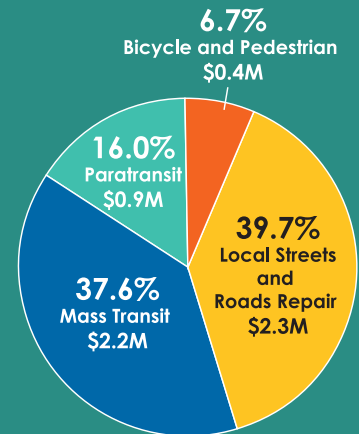
Transportation Fund for Clean Air (TFCA) is a local fund source of the Bay Area Air Quality Management District. Projects typically funded with TFCA include shuttle operations, traffic management systems, bicycle and pedestrian projects and alternative-fuel infrastructure. As the TFCA program manager for Alameda County, Alameda CTC is responsible for annually programming 40 percent of the \$4 vehicle registration fee collected in Alameda County for this program.

The FY2015-16 TFCA program identified over \$2 million in funding available for programming. In May 2015, Alameda CTC released a [call for projects](#), and a program recommendation is scheduled for September 2015.

Transportation Investments

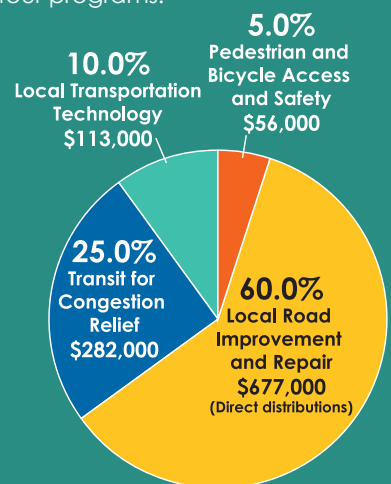
Measure B Program Distributions Since 2002

Alameda CTC has provided more than \$679.0 million in Measure B local program distributions since 2002. In March 2015, Alameda CTC disbursed over \$5.8 million for the following four programs.



Vehicle Registration Fee Distributions Since 2011

Alameda CTC has dispersed over \$26.4 million in VRF Local Road Repair funds since 2011. In March 2015, Alameda CTC collected over \$1.1 million for the following four programs.



Total Measure B-funded Contracts*

Alameda CTC has funded more than \$837.5 million in contracts for Alameda County businesses since 2000.

* Total contract amount includes additional fund sources.

Outreach and Events

Alameda CTC will host or participate in the following outreach events during June and July:

- BikeMobile events:
 - June 3 – Burbank Elementary School (Hayward)
 - June 5 – Forest Park Elementary School (Fremont)
 - June 6 – Edison Elementary School (Alameda)
 - June 9 – Eastin Elementary School (Union City)
 - June 13 – Bikes, Bubbles and Books Summer Reading Kick-Off Party at the Oakland Public Library West Branch
 - June 15 – Wexford Apartments (Dublin)
 - June 22 – Berkeley Public Library, South Branch
 - July 7 – MORH One Community Center in Oakland
- June 5 – Four Seasons of Health Expo at the Fremont Senior Multi-Service Center
- June 6 – Mountain House Kite Festival
- June 11 – Senior Resource Fair in Albany
- June 17 – Association of Pedestrian and Bicycle Professionals (APBP) Webinar at Alameda CTC: First Mile/Last Mile Connections to Transit
- June 18 – Alameda County Fair – Senior Day; Livermore Farmers' Market
- June 25 – Dublin Farmers' Market
- June 30 – Annual Joint Chamber 2015 Business Expo (Albany, Berkeley and Emeryville Chambers of Commerce) in Berkeley
- July 1 – 1st Wednesday's Street Party in Pleasanton
- July 9 – Countywide Transportation Plan Call for Projects Workshop at Alameda CTC
- July 11 – Tracy Farmers' Market
- July 15 – APBP Webinar at Alameda CTC: Health in All Policies
- July 16 – Livermore Farmers' Market
- July 17 – Alameda CTC's Annual Commission Retreat in Oakland
- July 23 – Dublin Farmers' Market
- July 25 – PedalFest in Oakland at Jack London Square
- July 28 – Rotary Club of Dublin

Save the Date: Commission Retreat on July 17, 2015

On Friday, July 17, 2015 starting at noon, Alameda County Transportation Commissioners are invited to a retreat that will kick-off the full implementation of the 2014 Transportation Expenditure Plan in Alameda County.

Because Measure BB is a catalyst for advancing local, regional, mega-regional, state and federal transportation needs, Commissioners will discuss agency priorities — how to leverage funding to deliver the promise of Measure BB and what policy and legislation, partnerships and advocacy are needed to support delivery of Measure BB projects and programs.

The retreat located at Alameda CTC (and at Wendel Rosen Black & Dean LLP offices after the 2:20 p.m. break) will include break-out sessions, a panel discussion and facilitated discussions with Commissioners and attendees.

Other News iBike Campaign 2015

Since 2008, Alameda CTC has collaborated with Bike East Bay to develop and run an ad campaign — iBike — from mid-April through May to correspond with annual Bike to Work day events. This campaign promotes bicycling as a safe and healthy transportation and commute choice.



In 2015, iBike ads appeared on and in buses, trains, bus shelters, BART stations and social media throughout the county. One of the new elements of the iBike Campaign this year was a social media ad campaign on Facebook and Twitter that generated more than 700 clicks over three days.

Committee Activities June advisory committees



In June, the following community advisory committees met. Highlights include:

- June 4 – The [Alameda County Technical Advisory Committee \(ACTAC\)](#) unanimously approved the FY2015-16 Comprehensive Investment Plan. The committee also received updates on the May 2015 California Transportation Commission meeting, the Alameda County Federal Inactive Projects list and the Metropolitan Transportation Commission Local Streets and Roads Working Group meeting.
- June 8 – The [Citizens Watchdog Committee \(CWC\)](#) discussed the FY2014-15 Audit, the CWC Audit Review process, and draft CWC Annual Report content. In addition, staff provided the CWC with a Projects and Programs Watchlist and responses to CWC requests for information.
- June 9 – The [Paratransit Technical Advisory Committee \(ParaTAC\)](#) received a report on FY2015-16 Measure B/BB Paratransit Program Plans and funding. ParaTAC members discussed dialysis transportation challenges and the FY2015-16 Mobility Workshop strategy. The committee also exchanged technical information.
- June 22 – The [Paratransit Advisory and Planning Committee \(PAPCO\)](#) received committee effectiveness training and elected officers for FY2015-16. The committee also approved the meeting calendar and developed and approved the FY2015-16 PAPCO Work Plan.