



JULY 2014

EXECUTIVE DIRECTOR'S REPORT

Director's Message

AN ECONOMIC ANALYSIS released on July 1 by the Bay Area Council Economic Institute reports that the [2014 Transportation Expenditure Plan](#) will yield more than \$20 billion in economic activity and will stimulate the creation of 150,000 jobs. This demonstrates the significant return on our local investment with the 2014 Plan.

The 2014 Plan will fund improvements for BART, bus and commuter rail; paratransit for seniors and people with disabilities; and an affordable youth transit pass. It will also address traffic relief on highways and roads, and expand safe walking and biking. The Plan has already received unanimous approval by all 14 cities in Alameda County and the County Board of Supervisors. This Plan has extensive support from business, environmental, labor, social justice, civic and other groups across Alameda County. See the [four-page summary report](#) and "Policy News" for more information about how the Plan [Director's Message cont'd on page 2](#)

Transportation Planning Updates

Countywide Transit Plan and Countywide Multimodal Arterial Plan



In June 2014, Alameda CTC officially kicked off the development of [The Countywide Transit Plan](#) with the consultant team. The team is currently working on completing an outreach and engagement plan for the project and is beginning work on an analysis of existing and future conditions, including transit travel markets to, from and within Alameda County. Staff expects to present this analysis along with the preliminary vision, goals and performance measures to the Commission in November 2014.

In May 2014, Alameda CTC selected the consultant for development of the [Countywide Multimodal Arterial Plan](#), and the consultant team will begin work in July. In September 2014, the consultant teams for both the Countywide Transit Plan and the Countywide Multimodal Arterial Plan will be introduced to the Commission.

For more information about the Goods Movement Plan, see "Other News" or visit the [Goods Movement Collaborative and Plan web page](#).

Policy News

Economic analysis predicts 150,000 new jobs

In June 2014, the Bay Area Council Economic Institute released "[In The Fast Lane: Improving Reliability, Stabilizing Local Funding, and Enabling the Transportation Systems of the Future in Alameda County](#)," which reports the nearly \$8 billion [2014 Transportation Expenditure Plan](#) (Plan) will yield more than \$20 billion in total economic activity in the Bay Area and 150,000 jobs. These full-time equivalent jobs will be in the fields of construction, transit operations and maintenance; professional, scientific and technical services; and manufacturing.

This in-depth report reinforces Alameda County as a critical transportation hub for international and domestic trade in the Bay Area's regional transportation system:

- 90 percent of the Bay Area trade in agriculture, wine and heavy machinery by weight goes through the Port of Oakland, sending California's exports around the world.
- 99 percent of containerized cargo from Northern California passes through the Port of Oakland.
- 53 percent of workers in Alameda County live outside the county.
- 37 percent of Bay Area workers travel to, from or through Alameda County.

The 2014 Plan and transportation measure on the November 2014 ballot will ensure Alameda County can maintain its transportation system as well as upgrade it to keep pace with population growth, connect

[Policy News cont'd on page 4](#)

TABLE OF CONTENTS

- 1 Transportation Planning Updates**
Countywide Transit Plan and Countywide Multimodal Arterial Plan
Policy News
Economic analysis predicts 150,000 new jobs
- 2 Project Updates**
Route 84 Expressway: North segment opens
- 3 Finance Updates**
Independent audit process
Programming Updates
Measure B Paratransit Gap Grant: Emeryville 8-to-Go Program
- 4 Outreach and Events**
July and August activities
Committee Activities
July advisory committee highlights
Other News
Goods Movement Collaborative

Director's Message cont'd

will be a new source of economic strength if voters approve it in November 2014.

Other planning efforts include development of three multimodal plans that will improve several aspects of Alameda County's transportation system and support future updates of the Countywide Transportation Plan. See "Transportation Planning Updates" for information on the Countywide Transit Plan, the Countywide Multimodal Arterial Plan and the [Countywide Goods Movement Plan](#).

On the project delivery front, significant planned investments in the Tri-Valley to improve the Route 84 corridor have been implemented, and I'm pleased to report that in June 2014, the [north segment of the Route 84 Expressway](#) opened for traffic. This segment improves capacity, eases congestion and increases safety in the area for pedestrian and bicycle access. Find out more about recent and future Route 84 corridor improvements in "Project Updates."

A program funded by a Measure B Paratransit Gap Grant is making a difference in the lives of seniors and people with disabilities. The City of Emeryville's 8-to-Go Shuttle Program provides door-to-door shuttle services, which help users feel less isolated and more independent (read more in "Programming Updates").

While managing the budget for all the transportation projects and programs we deliver, Alameda CTC's finance team has begun the annual independent audit process for FY2013-14. Auditors were onsite in June and will return in August. Learn more about this and upcoming [contracting opportunities](#) in "Finance Updates."

Alameda CTC is doing outreach throughout the county this summer. Please join us at some of the upcoming activities and events listed on page 4.

Sincerely,

ARTHUR L. DAO
Executive Director, Alameda CTC

Project Updates

North segment opens on Route 84 Expressway

A significant mobility investment in Route 84 Corridor improvements in the Tri-Valley has been planned and implemented in stages — over two decades — to deliver congestion relief, improve access and support community vitality. The initial vision was to realign and widen Route 84 and divert traffic away from Downtown Livermore and provide direct access between the I-580 and the I-680 corridors. The Alameda County Measure B sales tax has been a major funding source and has attracted federal, state and other local funding for each stage of development.

In spring 2012, a joint ribbon-cutting/ground-breaking ceremony celebrated completion of the new Isabel Avenue/I-580 Interchange Project and the start of construction of the first segment of the Route 84 Expressway Project.

Segment opened to traffic in June

The northern, 1.6-mile segment of Route 84 was widened from north of Concannon Boulevard to Jack London Boulevard and

upgraded to expressway status. In addition to improving capacity and easing congestion, it increases safety in the area for pedestrian and bicycle access by augmenting and improving the multiuse trail on a separate alignment adjacent to the expressway. In early June 2014, the project was substantially complete and opened to traffic.

Next in line for delivery, the south portion of the Route 84 Expressway Project will widen a 2.4-mile section of Route 84 from Ruby Hill Drive to Concannon Boulevard. Construction is expected to begin in summer 2015 and continue through the fall of 2017.

A remaining gap-closure project to widen the roadway between Pigeon Pass and I-680 and improvements to the I-680/Route 84 Interchange are included in the [2014 Transportation Expenditure Plan](#) (Plan). Passage of the 2014 Plan will provide an infusion of funding to complete the final improvements along Route 84.



Route 84 Corridor Projects	Construction Complete	Measure B Funding (\$ X Million)	Total Project Cost (\$ X Million)
Route 84 Improvements	2001	\$30.8	\$53.3
Isabel Avenue/I-580 Interchange	March 2012	\$25.1	\$111.6
Route 84 Expressway – North Segment	June 2012	\$20.5	\$36.6
Route 84 Expressway – South Segment	October 2017	\$71.9	\$95.4
TOTAL:		\$148.3	\$296.9

Finance Updates

Independent audit process

Finance has begun the annual independent audit process for FY2013-14. Auditors from Vavrinek, Trine, Day & Co. were onsite for two weeks in June. They met with the Commission Audit Committee and the Citizens Watchdog Committee (CWC) Audit Subcommittee and performed various tests including testing of the internal controls single audit procedures, limitation calculations documentation and other testing as requested by the CWC's Audit Subcommittee. Final audit work will commence the last week of August and last a few weeks.

Contracting opportunities

In May 2014, Alameda CTC awarded contracts to top-ranked firms for the Countywide Multimodal Arterial Corridor Plan, and for weed abatement services for the I-880 to Mission Boulevard East-West Connector, and I-880/North Safety and Operational

Improvements Projects. Alameda CTC has two open requests for proposals for the Downtown Oakland Comprehensive Circulation Study and the Clement Avenue Complete Street Corridor Concept Plan and anticipates issuing up to eight solicitations through summer 2014.

Upcoming opportunities include East Bay Municipal Utility District utility relocation services for the I-880/North Safety and Operational Improvements Project, professional services for the project approval/environmental document phase for the I-880/Broadway-Jackson Interchange Improvements, maintenance services for the East Bay Greenway Maintenance Projects and professional services for the Sustainable Communities Technical Assistance Program. For more information, visit the [Contracting Opportunities web page](#).

Programming Updates

Measure B Paratransit Gap Grant: Emeryville 8-to-Go Program

Alameda CTC recently awarded \$106,000 in Measure B Paratransit Gap Grant funds to the City of Emeryville's 8-to-Go Shuttle Program. This program provides door-to-door shuttle service for seniors and people with disabilities in the 94608 zip code area of Oakland and Emeryville, including shuttle service to Berkeley.



Through fiscal year 2013-2014 (FY13-14), Emeryville provided over 3,000 one-way trips to seniors and people with disabilities. Users indicated feeling less isolated and more independent as a result of using the door-to-door service. The city is committed to increasing the number of trips provided in FY14-15 and anticipates an increase in ridership through improved outreach. For additional information, see the [project sponsor's website](#).

Measure B/VRF compliance program FY12-13 accomplishments

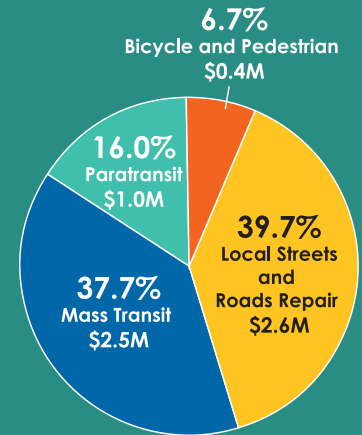
Annually, Measure B/VRF Direct Local Program Distribution recipients are required to submit Program Compliance Reports that describe actual and planned fund expenditures. In FY12-13, recipients expended a total of \$71.1 million in Measure B (\$64.5 million) and VRF (\$4.6 million) funds to support local streets and roads, bicycle and pedestrian, paratransit and mass transit improvements within Alameda County.

Local agencies and transit providers delivered over 50 million transit trips, 35 million square feet of pavement repair and maintenance enhancements, and over 40 lane miles of bicycle improvements using Measure B/VRF investments. These essential improvements provide congestion relief, increase safety and enhance mobility throughout Alameda County. Recipients' [Measure B and VRF FY 2012-13 Program Compliance Reports](#) are available on Alameda CTC's website.

Transportation Investments

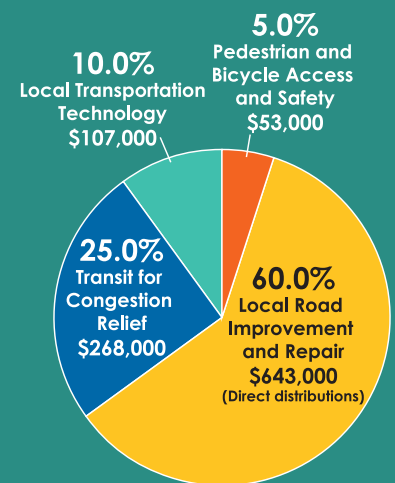
Measure B Program Distributions Since 2002

Alameda CTC has provided more than \$679.0 million in Measure B local program distributions since 2002. In April 2014, Alameda CTC disbursed more than \$6.5 million for the following four programs.



Vehicle Registration Fee Distributions Since 2011

Alameda CTC has dispersed nearly \$19.8 million in VRF Local Road Repair funds since 2011. In April 2014, Alameda CTC collected nearly \$1.1 million for the following four programs.



Total Measure B-funded Contracts*

Alameda CTC has funded more than \$837.5 million in contracts for Alameda County businesses since 2000.

* Total contract amount includes additional fund sources.

Outreach and Events

Alameda CTC is participating in or hosting these outreach events in July and August:

- BikeMobile events – The BikeMobile will be at elementary and high schools, and libraries through out Alameda County. Go to <http://bike-mobile.org/calendar/> to find an event near you.
- Farmers' market events - Go to the [2014 Outreach Calendar](#) for market updates.
- July 1 – Alameda City Council presentation on the [2014 Alameda County Transportation Expenditure Plan](#)
- July 2 – City Center Summer Sounds Concert Series in Oakland; 1st Wednesdays Street Party in Pleasanton
- July 3 – Hayward Chamber of Commerce Government Relations Committee meeting
- July 8 - Alameda County Board of Supervisors presentation on the [2014 Plan](#)
- July 12 – Newark 2014 Annual SummerFest
- July 15 – A 2014 Plan and Paratransit presentation to Allen Temple Arms
- July 17 – Association of Pedestrian and Bicycle Professionals (APBP) Webinar at Alameda CTC: From Fast to Safer: Best Practices Where Road Speeds Change
- July 17 – Healthy Living Festival at the Oakland Zoo; Downtown Hayward Street Parties
- July 23 – Goods Movement Roundtable at Alameda CTC offices; 2014 Plan and Paratransit presentation to Downtown Oakland Senior Center; Hilton Pleasanton Commute Fair
- July 26 – Pedalfest at Jack London Square/BikeMobile in Oakland; Park Street Art and Wine Faire in Alameda; 2014 Black Expo at Oakland's Frank Ogawa Plaza
- August 2 & 3– Fremont Festival of the Arts
- August 5 – Emeryville Chamber of Commerce Board meeting
- August 6 – City Center Summer Sounds Concert Series in Oakland; Healthy Aging Fair at Chabot College Cafeteria in Hayward
- August 12 – Oakland Chinatown Chamber of Commerce Board meeting
- August 16 – Health Fair at Oakland's Allen Temple Baptist Church
- August 20 – APBP Webinar at Alameda CTC: Transform Bicycling and Walking Outside the Urban Context
- August 21 – San Leandro Chamber of Commerce Board meeting; Downtown Hayward Street Parties
- August 23 – Oakland Chinatown StreetFest
- August 24 & 25 – Caltopia 2014 at U.C. Berkeley
- August 27 – Mastick Senior Center Open House and Resource Fair in Alameda

Other News

Goods Movement Collaborative

Alameda CTC and the Metropolitan Transportation Commission are hosting a roundtable to address the opportunities, impacts and emerging trends related to goods movement and freight in Alameda County, the Bay Area and beyond.

This half-day event, “Building a Regional Perspective: Goods Movement Opportunities and Issues in the Bay Area,” will bring together a diverse audience of government leaders, business representatives, industry experts and community partners. The roundtable is on Wednesday, July 23, 2014 from 12:30-4:30 p.m. at the Alameda CTC office.

Learn more at <http://www.alamedactc.org/GoodsMovement>.



Policy News cont'd from page 1

housing and jobs, and support the economic competitiveness of the region.

See the four-page [summary of the report](#) or visit www.AlamedaCTC.org/2014Plan to learn more.

Join Us at the Next Free Webinar: Transform Bicycling and Walking Outside the Urban Context

On August 20, 2014, Alameda CTC will host the Association of Pedestrian and Bicycle Professionals webinar. This free event is open to all. Don't forget to bring your lunch. Watch for upcoming topics on every third Wednesday of the month on the [Alameda CTC meeting calendar](#).

Committee Activities

July 2014 advisory committees

In July, the following community advisory committees met. Highlights include:

- July 10 – The [Alameda County Technical Advisory Committee](#) (ACTAC) approved the Countywide Goods Movement Plan Performance Measures. ACTAC members also received updates on the 2014 Transportation Expenditure Plan, the 2014 Level of Service Monitoring Study draft results, implementation of Senate Bill 743 and the Alameda County revised Freeway Soundwall Policy.
- July 10 – The [Bicycle and Pedestrian Advisory Committee](#) (BPAC) elected its chair and vice chair and reviewed and approved the BPAC Bylaws and its FY14-15 calendar. The committee also received an update on the Measure B/ Vehicle Registration Fee Local Direct Program Distribution Compliance Report, Bicycle and Pedestrian Expenditure Analysis.
- July 14 – The [Citizens Watchdog Committee](#) (CWC) approved the “CWC 12th Annual Report to the Public” as well as publication distribution and costs. The committee also received a report on the CWC Pre-Audit Subcommittee meeting and an update on the 2014 Transportation Expenditure Plan approved ordinance with final ballot language.
- July 28 – The [Paratransit Advisory and Planning Committee](#) (PAPCO) elected its chair and vice chair and reviewed and approved the PAPCO Bylaws. PAPCO members also made a recommendation to fund a capital project with Paratransit Gap Grant funds. In addition, the committee received a demonstration of the updated transportation section of Alameda County's 2-1-1 online service.