



JANUARY 2015

EXECUTIVE DIRECTOR'S REPORT

Director's Message

WELCOME TO THE NEW YEAR. 2015 is already off to a good start. I look forward to working with the entire Commission to continue to deliver essential transportation programs and projects across the County and to improve mobility and accessibility for Alameda County residents and workers.

On January 21, Alameda CTC hosted its third Goods Movement Roundtable meeting as part of the Northern California Goods Movement Collaborative. We've also been preparing a series of public workshops in February and March that focus on three new plans under development: transit, arterial and goods movement (see "Transportation Planning Updates" and page 4 for locations and times).

Alameda CTC's innovative Comprehensive Investment Plan is also

Director's Message cont'd on page 2

TABLE OF CONTENTS

- 1 Transportation Planning Updates**
Public workshops in February and March
- Policy News**
Comprehensive Investment Plan project selection criteria
- 2 Project Updates**
I-80 SMART Corridor Project
- 3 Finance Updates**
Administering Measure BB
- Programming Updates**
Measure B/Vehicle Registration Fee program compliance reporting
- 4 Outreach and Events**
January and February activities
- Committee Activities**
January advisory committee highlights
- Other News**
Guaranteed Ride Home Program

Transportation Planning Updates

Public workshops in February and March

Alameda CTC is coordinating five public planning workshops to inform and engage our communities in the development of three countywide multimodal plans: transit, arterial and goods movement. These workshops in February and March of 2015, located at venues across Alameda County, will give the public the opportunity to provide input on the transportation system in their community. See "Outreach & Events" on page 4 for workshop times and locations.

Alameda CTC also hosted its third Goods Movement Roundtable in Oakland on January 21, 2014, "Moving Goods and Freight in the Bay Area: Needs and Opportunities," which was well-attended.

Vision, goals and performance measures

Development of three multimodal transportation plans continues, and in November 2014, Alameda CTC presented draft vision, goals and performance measures of the Countywide Multimodal Arterial Plan and the Countywide Transit Plan to the Alameda County Technical Advisory Committee (ACTAC) and the Plans Technical Advisory Committee. Each plan's vision is supported by strategic goals and performance measures that evaluate a plan's recommended improvements against its strategic goals.

Based on comments received from stakeholders and local jurisdictions, the project teams will present revised vision, goals and performance measures for ACTAC's review in February 2015.

Policy News

Comprehensive Investment Plan project selection criteria

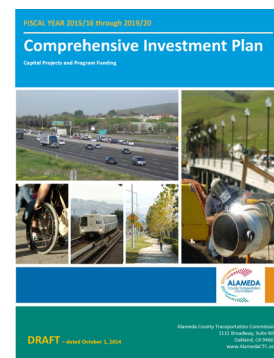
Alameda CTC is developing its first Comprehensive Investment Plan (CIP) that will identify anticipated local, regional, state and federal transportation funding over a five-year period and strategically match these funding sources to targeted transportation priorities in Alameda County. The CIP will include a two-year allocation plan consistent with Alameda CTC's budget.

In December 2014, the Commission approved the [CIP's three-phase project selection methodology approach](#) that guides the process for Alameda CTC's programming and allocation recommendations over the five-year period.

In January 2014, the Commission will review the following CIP evaluation criteria and related policies that will guide programming and allocation decisions for discretionary funds administered by Alameda CTC.

- 1. Project delivery readiness:** The project/program has a well-defined funding plan, budget and schedule, and implementation of the project is feasible.
- 2. Needs and benefits:** The project/program need is clearly defined and demonstrates how the transportation improvement will benefit intended users.

Policy News cont'd on page 4



Director's Message cont'd

moving along. In December 2014, Commissioners approved the [CIP project selection methodology](#), and in January, Commissioners will review the proposed evaluation criteria (read more in "Policy News").

One of the projects in the current Measure B Transportation Expenditure Plan — the [I-80 SMART Corridor Project](#) — uses innovative and cutting-edge congestion management intelligent transportation system technology to enhance motorist safety, reduce accidents and improve travel time reliability between the Carquinez Bridge and the Bay Bridge. See "Project Updates" for more information.

The finance team has been working with the California State Board of Equalization to enter into agreements for administration of the Measure BB sales tax, which becomes effective April 1, 2015, to fund transportation improvements throughout Alameda County. Alameda CTC also anticipates creating [opportunities](#) that will generate jobs related to planning, project and program activities in early 2015 through contracting opportunities. Find out more in "Finance Updates."

The annual programs compliance reporting review process is also in full swing for staff and Alameda CTC's Citizens Watchdog Committee. Read more about this and the City of Alameda's innovative Cross Alameda Trail Project in "Programming Updates."

Join us at the events listed on page 4, and learn more about our voucher-free [Guaranteed Ride Home Program](#) in "Other News."

I look forward to another terrific year ahead working with you.

Sincerely,

ARTHUR L. DAO
Executive Director
Alameda County Transportation Commission

Project Updates

I-80 SMART Corridor Project



Large electronic overhead signs on westbound Interstate 80 (Eastshore Freeway) between Richmond and the Bay Bridge are part of the [I-80 SMART Corridor Project](#), representing one of the most comprehensive intelligent transportation systems in the state. The project broke ground in fall 2012 and is anticipated to be operational in spring 2015.

The I-80 SMART Corridor is implementing a network of integrated electronic signs, ramp meters and other state-of-the-art elements between the Carquinez Bridge and the Bay Bridge to enhance motorist safety, improve travel time reliability and reduce accidents and associated congestion. In addition to providing \$4 million in local Measure B funds, Alameda CTC was instrumental in securing \$67 million in State Proposition 1B Bond funding to build the \$80 million project. Additional funding is from Contra Costa County's Measure J along with federal, state and regional funds.



Project status

Caltrans has completed the installation of way-finding signage and transit prioritization signals along San Pablo Avenue, as well as adaptive ramp meters on 44 on-ramps along the I-80 corridor. Overhead sign installation is nearly complete, with eight of 11 sign frames installed.

To learn more about the new signs for freeway drivers that will provide real-time recommended speed limit, traffic accident and other information, as well as the new smart ramp-meters along the corridor, [download the project fact sheet](#) and visit the new project website at 80smartcorridor.org or contact us via the hotline at 800-747-5031, info@80smartcorridor.org or Twitter [#80SMART](https://twitter.com/80SMART).

Finance Updates

Administering Measure BB

In December 2014, the Commission approved Alameda CTC's Comprehensive Annual Financial Report (CAFR) for the year ended June 30, 2014. The agency received an unqualified, or what is considered a clean, opinion from the auditors, Vavrinek, Trine, Day & Co., LLP and as mentioned last month, has submitted the CAFR to the Government Finance Officers Association for consideration for an award for excellence in financial reporting.

The finance team has also been working with the California State Board of Equalization to enter into agreements for administration of the new Measure BB, approved in November 2014 by over 70 percent of voters, which becomes effective April 1, 2015.

Contracting opportunities

Using Measure B funding from Alameda CTC, the City of Hayward recently released a request for proposals for construction services for the I-880/SR-92 Reliever Route – Phase 1

Project. This project will create opportunities for certified businesses of Alameda CTC's Local Business Contract Equity (LBCE) Program. Similarly, the City of Oakland released a contracting opportunity for the Downtown Oakland Latham Square Streetscape Improvements also aimed at LBCE Program certified firms.

Upcoming contracting opportunities from Alameda CTC include maintenance services for the East Bay Greenway – 75th Avenue to 85th Avenue in Oakland project and the Tri-Valley Integrated Transit/Park-and-Ride Study. Alameda CTC plans to issue two additional solicitations in early 2015. For more information, visit the [Opportunities web page](#).



Programming Updates

Measure BB/VRF program compliance reporting

Starting in January, Alameda CTC and the Citizens' Watchdog Committee began their review of the Measure B and Vehicle Registration Fee Program Compliance Reports and Financial Statements for FY2013-14. Each year, Measure B/VRF recipients are required to submit an Audited Financial Statement and Program Compliance Report. These reports summarize the recipients' Measure B/VRF revenues and expenses from the prior fiscal year used to support local street and roads, bicycle and pedestrian, paratransit and mass transit improvements. Reviewers will confirm recipients are in compliance with Alameda CTC's timely use of funds and reserve policies, expenditure eligibilities and reporting requirements. A full summary report highlighting Measure B and VRF funded accomplishments over FY2013-14 will be available in June 2015.

Measure B Program delivers - Cross Alameda Trail Segment

The City of Alameda is completing design and environmental review for its Cross Alameda Trail Project. The proposed 0.4-mile trail segment will

run parallel to and south of Ralph Appezatto Memorial Parkway between Webster Street and Main Street. Once complete, the Cross Alameda Trail segment will feature a separate walkway and bikeway path, pedestrian, bicycle and Americans with Disabilities Act improvements, wayfinding signs at the intersecting streets and landscaping improvements.

The anticipated cost for these improvements is approximately \$1 million. The city secured \$793,000 from Alameda CTC's Measure B Bicycle and Pedestrian grant program to fund the majority of the project. Construction for the project will begin in the spring, and construction completion is scheduled for October 2015. The Cross Alameda Trail will be designated as a

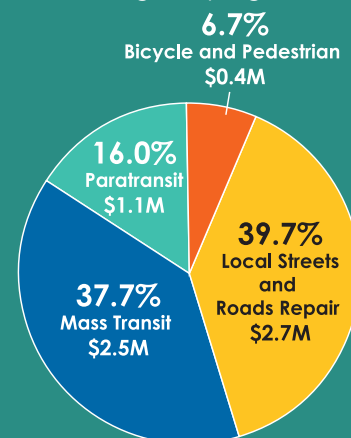


segment of the San Francisco Bay Trail and will close a gap in the current bicycle/pedestrian network.

Transportation Investments

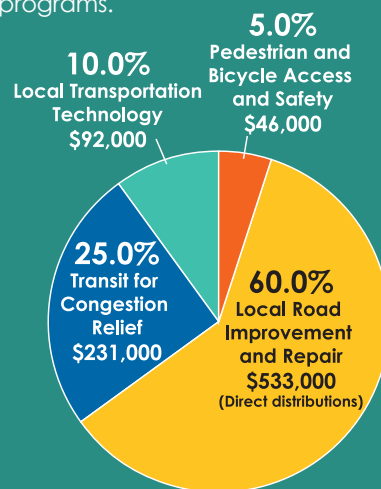
Measure B Program Distributions Since 2002

Alameda CTC has provided more than \$679.0 million in Measure B local program distributions since 2002. In October 2014, Alameda CTC disbursed more than \$6.7 million for the following four programs.



Vehicle Registration Fee Distributions Since 2011

Alameda CTC has dispersed over \$39.0 million in VRF Local Road Repair funds since 2011. In October 2014, Alameda CTC collected over \$0.9 million for the following four programs.



Total Measure B-funded Contracts*

Alameda CTC has funded more than \$837.5 million in contracts for Alameda County businesses since 2000.

* Total contract amount includes additional fund sources.

Outreach and Events

Alameda CTC hosts or participates in the following events during January and February:

- January 15 – East Bay Economic Development Alliance's Legislative Reception 2015 at the Craneway Pavilion in Richmond
- January 16 – BikeMobile at Fallon Middle School in Dublin
- January 21 – Goods Movement Roundtable 12:30-4:30 p.m. at Alameda CTC; Association of Pedestrian and Bicycle Professionals (APBP) Webinar at Alameda CTC: Level of Service for Pedestrians and Cyclists
- January 24 – BikeMobile at the Union City Kid Zone Grand Opening at Barnard-White Middle School campus
- February 4 – 5th Annual Transition Information Night in Fremont, sponsored by the Fremont, Newark and New Haven Unified School Districts
- February 7 and 8 – Lunar New Year Celebration in Oakland's Chinatown



- February 11 – SPUR Urban Center Forum on Goods Movement in San Francisco
- February 12 – Transportation Planning Workshop 5-9 p.m. at the Dublin Civic Center Regional Meeting Room at Dublin City Hall
- February 18 – APBP Webinar at Alameda CTC: New Tools for Estimating Walking and Bicycling Demand
- February 21 – Transportation Planning Workshop 9 a.m. to 1 p.m. at Hayward City Hall; BikeMobile at Mendenhall Middle School in Livermore
- February 24 – Transportation Planning Workshop 4-8 p.m. at the Fruitvale-San Antonio Senior Center
- February 26 – Dublin Business Expo at the Shannon Community Center in Dublin

Policy News cont'd from page 1

3. Project/program sustainability:

The project/program demonstrates the ability to be maintained beyond project completion.

4. Matching and leveraging:

The project/program has secured funding from other sources or demonstrates how it will leverage other funds.

5. Other funding features:

As applicable, the project/program incorporates complete streets and other requirements mandated by other funding sources.

The evaluation process will begin in early 2015, and Alameda CTC will make a project/program inventory recommendation in spring 2015.

Other News

Guaranteed Ride Home Program

The Alameda CTC Guarantee Ride Home (GRH) Program provides commuters who register with the program a free ride home if they have an emergency and have made the commitment not to commute alone by car. By providing program participants with this assurance, they can confidently choose to take transit, carpool, vanpool, walk or bike to work.

In 2014, the GRH program transitioned from a voucher system to a reimbursement system. This transition is complete, and vouchers will no longer be accepted in 2015. GRH participants can easily submit via the website or mail in taxi or rental car ride receipts for reimbursement. For more information about the GRH program, visit grh.alamedactc.org.

Join Us at Transportation Planning Workshops in Your Area

In February and March 2014, Alameda CTC is hosting a series of five public workshops throughout Alameda County to educate the public about three new multimodal transportation plans under development: [Countywide Transit Plan](#), [Countywide Multimodal Arterial Plan](#) and [Countywide Goods Movement Plan](#). See the Outreach and Events Calendar and please join us to provide your input on what matters most to you regarding different types of transportation in your area.

Committee Activities

January advisory committees

In January, several community advisory committees met. Highlights include:

- January 8 – The [Alameda County Technical Advisory Committee](#) approved Alameda CTC's Comprehensive Investment Plan project evaluation criteria, as well as received a synopsis of the Measure BB election results, 2014 Transportation Expenditure Plan (2014 Plan) fund projections, an update on Countywide multimodal plans, a presentation on I-580 Express Lanes education and outreach, and a summary of applications for Lifeline Cycle 4.
- January 8 – The [Bicycle and Pedestrian Advisory Committee](#) approved its bylaws, received a presentation on Bay Area Bike Share expansion from the Metropolitan Transportation Commission and received updates on the 2014 Plan, the Comprehensive Investment Plan, the East Bay Greenway project, the Countywide Multimodal Arterial Plan and the Central County Complete Streets Implementation Project.
- January 12 – The [Citizens Watchdog Committee](#) received an orientation for and began a review of audit and program compliance reports submitted by Measure B fund recipients. Members also received their Annual Report Outreach Summary and Cost Benefit Analysis Report, updates on Measure B projects and programs, and the Alameda CTC FY2014-15 first quarter investment report.
- January 13 – The [Paratransit Technical Advisory Committee](#) received updates on the Direct Local Program Distribution estimates, the Master Plan Funding Agreements (MPFA) and the Hospital Discharge Transportation Service and Wheelchair Scooter Breakdown Transportation Service. The committee also discussed draft changes to the MPFA Implementation Guidelines that list the types of programs and services for which Measure B and Measure BB funds can be used.
- January 26 – The [Paratransit Advisory and Planning Committee](#) discussed the draft Implementation Guidelines reviewed by ParaTAC, as well as received an outreach summary report for 2014, a Paratransit Gap Grant extension update, a quarterly report from the Livermore Amador Valley Transit Authority and reports from Paratransit Gap Grant recipients providing volunteer driver programs.