



DECEMBER 2013

EXECUTIVE DIRECTOR'S REPORT

Director's Message

MULTIMODAL TRANSPORTATION

alternatives reduce congestion, accidents and pollution. As the congestion management agency for Alameda County, Alameda CTC develops and updates a [Congestion Management Program \(CMP\)](#) for the county every two years. In October 2013, the Commission approved the CMP, which includes policies and strategies to improve congestion management and multimodal transportation in Alameda County (read more in "Transportation Planning Updates").

In December, the Commission will receive the 2014 Legislative Program for approval. This program provides direction for Alameda CTC's legislative and policy activities for the year and includes six priority focus areas (see "Policy News" for details).

Starting in 2014, Alameda CTC will begin development of a strategic Capital Improvement Program/ Programs Investment Plan that will serve

[Director's Message cont'd on page 2](#)

TABLE OF CONTENTS

- 1 **Transportation Planning Updates**
2013 Congestion Management Program
Policy News
2014 Legislative Program
- 2 **Project Updates**
Alameda County I-580 Express Lanes
- 3 **Finance Updates**
Measure B capital program financing team
Programming Updates
LAVTA Bus Rapid Transit operations
- 4 **Outreach and Events**
November and December activities
Committee Activities
November advisory committee highlights

Transportation Planning Updates

2013 Congestion Management Program

As required by state Congestion Management Program (CMP) legislation, Alameda CTC biennially develops and updates a Congestion Management Program for Alameda County to monitor the level of service of the county's CMP roadway network, assess the performance of the county's transportation system, develop strategies to address congestion and improve the performance of this multimodal system, and strengthen the integration of transportation and land use planning.

Starting in April 2013, Alameda CTC performed a comprehensive review of Alameda County's CMP, conducted a multimodal performance review, evaluated strategies for reducing congestion, evaluated local jurisdiction conformity with the CMP, and incorporated Commission recommendations into the updated document.

The 2013 CMP update also more closely aligns the CMP with the 2012 Countywide Transportation Plan and Plan Bay Area (the Bay Area Regional Transportation Plan and Sustainable Communities Strategy), as well as other related efforts and legislative requirements (e.g., Assembly Bill 32 and Senate Bill 375) to better integrate transportation and land use for achieving greenhouse gas reductions.

In October 2103, the Commission approved the 2013 Congestion Management Program.

[Transportation Planning cont'd on page 4](#)

Policy News

2014 Legislative Program

Each year, Alameda CTC adopts a legislative program to provide direction for its legislative and policy activities for the year. Some of the highest priorities in Alameda CTC's 2014 Legislative Program will be to participate in efforts regarding the development of the next federal surface transportation bill, adoption and placement of the Transportation Expenditure Plan on the November 2014 ballot, implementation of Alameda County's transportation and land use activities to support the region's Sustainable Communities Strategy, advocacy for allocation of a Cap-and-Trade Program for transportation funding, goods movement planning and advocacy, and expanding legislative and policy partnerships throughout the Bay Area and California.



The 2014 Alameda CTC Legislative Program focuses on six main areas, including a new focus area on goods movement:

- Transportation funding
- Project delivery
- Multimodal transportation and land use
- Climate change
- Goods movement
- Partnerships

[Policy News cont'd on page 4](#)

Director's Message cont'd

as a project and funding management tool for Alameda CTC. This effort will link long-range planning and strategic investments into a short-range investment plan (see "Programming Updates").

The I-580 Express Lanes Project will also expand commuter choices for Alameda residents and others traveling in Alameda County by offering toll-free travel for carpools, vanpools, motorcycles, buses and eligible hybrid vehicles (see "Project updates" for more information).

The procurement process has been finalized for all major roles on a new financing team in preparation for issuing an inaugural bond for the Measure B capital program. Find out more about this as well as contracting awards and [opportunities](#) in "Finance Updates."

This month, Beth Walukas, Alameda CTC's deputy director of planning, is retiring after 18 years of dedicated service to Alameda County. She has been integral to the development of Alameda County's key transportation planning documents, including the [Countywide Transportation Plan](#), [Countywide Bicycle and Pedestrian Plans](#), the 2012 Transportation Expenditure Plan, which will go before voters again in November 2014, and the [2013 Congestion Management Program](#). Beth's comprehensive knowledge of Alameda County, her extensive agency partnerships, and her daily contributions to planning will be truly missed.

Please join us at our Year-End Celebration and Open House on Thursday, December 5, 2013 to celebrate Beth's accomplishments as well as the agency's successes over the past year and prospects for 2014 (see page 4 for details and a listing of other events in November and December).

Sincerely,

ARTHUR L. DAO
Executive Director, Alameda CTC

Project Updates**Alameda County I-580 Express Lanes**

A new Alameda County express lane facility is on the horizon and will soon be built along the I-580 corridor from Hacienda Drive to Greenville Road in the eastbound direction and from Greenville Road to San Ramon Road/Foothill Road in the westbound direction.

This express lane project will expand commuter choices for Alameda residents and others traveling in Alameda County by offering toll-free travel for carpools, vanpools, motorcycles, buses and eligible hybrid vehicles.



Solo drivers in vehicles equipped with a valid [FasTrak®](#) transponder can also use the system by paying the current toll with FasTrak. When the FasTrak-equipped vehicle passes under a reader, the correct toll is automatically deducted from the driver's prepaid FasTrak account — no tollbooths or stopping are required.

The need for this innovative project has been apparent for some time, as the I-580 corridor is known to exhibit high volumes of regional and interregional commuter and freight traffic. Alameda CTC is collaborating

with regional partners and industry experts nationwide to deliver this vital, high-priority project to the public. Construction of the I-580 Express Lanes will begin in fall 2014, and the new facility is expected to open in fall 2015.

**Public outreach and education**

In anticipation of building and opening the new express lane facility, Alameda CTC plans to implement extensive public outreach activities, in coordination with partner agencies, to educate the public about use of the express lanes in the I-580 corridor and throughout the Bay Area.

For more information related to the [Alameda County express lanes](#) and [how they work](#), visit our [projects web page](#).

Other News**Compliance Reports Due in December 2013**

Each year, Measure B and Vehicle Registration Fee funding recipients are required to submit audited financial statements and compliance reports to Alameda CTC. These reports document Measure B expenditures for four types of programs: bicycle and pedestrian,

local transportation, mass transit and paratransit; and VRF expenditures for the Local Road Improvement and Repair Program. The [audited financial statements and compliance reports](#) are due December 27 and December 31, respectively.

Finance Updates

Measure B capital financing team

Staff has built a financing team in preparation for issuing an inaugural bond for the Measure B capital program. The procurement process has been finalized for all major roles on the financing team including the financial advisor, Public Financial Management; bond counsel, Orrick Herrington and Sutcliffe; bond disclosure counsel, Fulbright Jaworski; senior underwriters, Citigroup Global Markets; and co-manager underwriters, Barclays. The team will work on creating all bond documents and presentations throughout the fall and winter. Current plans are to go to market in February 2014.

The finance staff also recently finalized Alameda CTC's first Comprehensive Annual Financial Report (CAFR) for the fiscal year ended June 30, 2013. The draft report was approved by the Commission's Audit Committee on October 14 and reviewed by the Citizen's

Watchdog Committee's Audit Subcommittee on October 21. Staff will present the CAFR to the full Commission in December for approval.

Contracting update

Alameda CTC procured three professional services contracts in October and November 2013. For its upcoming bond issuance, Alameda CTC awarded underwriter contracts as described above. Acumen Building Enterprise, a Disadvantaged Business Enterprise firm headquartered in Oakland, was selected to provide planning, policy and administrative support services.

Alameda CTC is reviewing proposals requested by November 12, 2013 for development of its Countywide Transit Plan and anticipates issuing four additional RFPs in late 2013 and early 2014. For more information, visit the [Contracting Opportunities web page](#).

Programming Updates

LAVTA Bus Rapid Transit operations

The half-cent transportation sales tax, Measure B funds transportation operations to keep Alameda County residents conveniently and efficiently moving between their homes and jobs. In June 2013, Alameda CTC approved \$1.0 million in Measure B discretionary Express Bus Service grant funds to support Livermore Amador Valley Transportation Authority (LAVTA) express bus services. LAVTA will use Measure B funds to operate Bus Rapid Transit Routes 12V, 20X and 70X through the end of fiscal year 2014-2015. These express routes facilitate localized and regional connectivity by serving BART stations, Altamont Commuter Express stations within Alameda County and various bus transit connection hubs.

These routes provide a safe, cost-effective alternative to single-occupancy travel and an opportunity for commuters to avoid peak-hour congestion. By using a fleet partly comprised of hybrid buses, increasing the number of passengers per vehicle and reducing

overall trips, LAVTA's express bus services help decrease transportation congestion and pollution in Alameda County.

Capital Improvement Program

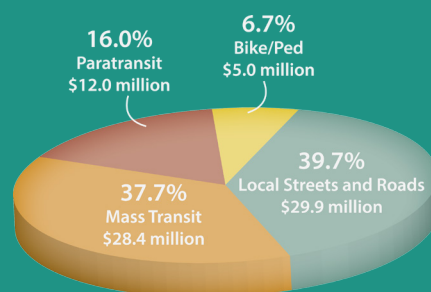
Starting in 2014, Alameda CTC will begin to develop a strategic Capital Improvement Program/Programs Investment Plan (CIP/PIP) that will serve as a project and funding management tool for Alameda CTC. The CIP/PIP will help the agencies coordinate and prioritize funding resources for projects aimed at reducing congestion, improving safety and promoting alternative travel options.

Throughout the development process, Alameda CTC will collaborate with its technical advisory committee to develop criteria to prioritize transportation improvements. This short-range strategic programming document will allocate resources to projects and programs that provide a maximum and an immediate benefit to the local and regional transportation network.

Transportation Investments

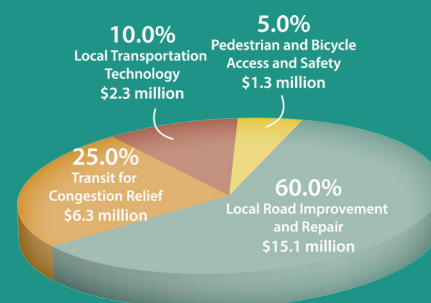
Measure B Program Distributions Since 2000

Alameda CTC distributed more than \$75.3 million by the end of August during the first quarter of fiscal year 2013-2014, and has distributed over \$839.2 million in Measure B pass-through funds since 2000.



Vehicle Registration Fee Distributions Since 2012

Alameda CTC has distributed over \$25.2 million in VRF pass-through funds through August 2013.



Total Measure B-funded Contracts*

Alameda CTC has funded more than \$836.5 million in contracts for Alameda County businesses since 2000.

* Total contract amount includes additional fund sources.

Outreach and Events

Alameda CTC hosts or participates in the following events during November and December:

- November 2 – Día de los Muertos in Oakland
- November 14 – Presentation by Alameda CTC staff to the Central County Rotarac in San Leandro
- November 14 – Presentation by Alameda CTC executive director to the League of California Cities – East Bay
- November 20 – Association of Pedestrian and Bicycle Professionals (APBP) Webinar at Alameda CTC: Is There Safety in Numbers for Cyclists and Pedestrians?
- December 5 – Alameda CTC Year-End Celebration and Open House at 1111 Broadway, Suite 800 in Oakland
- December 18 – APBP Webinar: Integrating Equity into Bicycle and Pedestrian Planning
- December 19 – Presentation by Alameda CTC executive director and staff to the United Contractors' Breakfast Meeting

Year-end Celebration and Open House at Alameda CTC

Please join us for a year-end celebration and open house at Alameda CTC on Thursday, December 5, 2013 from 3:30-6 p.m. at 1111 Broadway, Suite 800 (directly following the Commission meeting). The Alameda CTC is celebrating its successes over the past year and prospects for the coming year.

Integrating Equity in Bicycle and Pedestrian Planning - A Free Webinar on December 18

Join Alameda CTC as a guest for the Association of Pedestrian and Bicycle Professionals monthly webinar at 1111 Broadway, Suite 800, on Wednesday, December 18 from 12 to 1 p.m. (PST). Integrating Equity in Bicycle and Pedestrian Planning is this month's topic, which focuses on the standards and requirements of transportation equity. Feel free to bring a brown bag lunch; there is no cost for you to attend.

Policy News cont'd

In October 2013, Alameda CTC hosted a Legislative Roundtable Meeting for agency partners from Alameda County, the cities, transit operators, the Metropolitan Transportation Commission, the Port of Oakland and other interested parties. Participants received an update on 2014 federal and state activities and discussed their 2014 legislative and policy platforms and priorities.

Legislative Update

In an effort to promote information sharing, increase regionwide communications and coordinate legislative efforts, Alameda CTC will email a "Legislative Update" to our partner agencies, cities and stakeholders after each Commission meeting. The update will include quick links to legislative programs, updates on Commission action on state and federal bills and updates, as warranted, on each of the six priorities from Alameda CTC's 2014 Legislative Program: Transportation Funding, Project Delivery, Multimodal Transportation and Land Use, Climate Change, Goods Movement and Partnerships.

Transportation Planning Updates cont'd

The final document, which is available on the [Congestion Management Program web page](#), was delivered to the Metropolitan Transportation Commission in early November.

Committee Activities Highlights of November advisory committees

The highlights of November's advisory committees include:

- November 4 – The [Citizens Watchdog Committee](#) received updates on outreach activities and on the Program Compliance Workshop. Members also received a post-audit report that reiterated Alameda CTC's process for audit reviews. In addition to a presentation of the audited Comprehensive Annual Financial Report, the committee received a report on the fiscal year 2013-2014 first quarter investment report.
- November 12 – The [Paratransit Technical Advisory Committee](#) reviewed Implementation Guidelines for the Paratransit Program funded through Measure B and discussed revising the "Access Alameda" guide and website in relation to mobility management goals. In addition, the committee received an update on appointments and outreach activities.



- November 25 – The [Paratransit Advisory and Planning Committee](#) also reviewed Implementation Guidelines for the Paratransit Program funded through Measure B and reviewed initial revisions to the "Access Alameda" guide and website. In addition, the committee received a report on the progress of Paratransit Gap Grant Cycle 5 programs.