



APRIL 2014

EXECUTIVE DIRECTOR'S REPORT

Director's Message

THE BAY AREA COUNCIL ECONOMIC INSTITUTE (BACEI) has recently completed an economic analysis of the adopted 2014 [Alameda County Transportation Expenditure Plan](#) (Plan). The BACEI analysis confirms the Plan's positive impact on the economy, the environment and communities across the county. Every city will benefit from the proposed investments in the Plan. The BACEI analysis also includes statistics and data on the economic impacts of transportation infrastructure on the region's economic competitiveness and quality of life.

Read more in "Policy News," and find out how the Plan can help address funding shortfalls and protect our transportation infrastructure. Alameda CTC has already received unanimous approval of the Plan by 10 of the 14 cities in Alameda County.

Director's Message cont'd on page 2

TABLE OF CONTENTS

- 1 Transportation Planning Updates**
Performance Report shows increases in regional commuting and transit use
Policy News
Transportation system economic analysis
- 2 Project Updates**
Semi-annual status update and highlights
- 3 Finance Updates**
FY13-14 mid-year budget update
Programming Updates
Measure B funds Piedmont's first Pedestrian and Bicycle Master Plan
- 4 Outreach and Events**
April and May activities
Committee Activities
April advisory committee highlights
Other News

Transportation Planning Updates

Performance Report shows increases in regional commuting and transit use

In Alameda County, 2013 was a year of significant population and job growth. The county added 25,000 new residents, and employers added nearly 20,000 jobs. The recently released [Performance Report](#) tracks a number of transportation system indicators during this period of economic growth and shows increases in regional commuting, transit use and other transit modes such as walking and biking.

Commuting patterns

Roughly 27 percent of regional commutes were within, to, from or through Alameda County in 2011 (most recent data available), while workers who live or work in the county are fairly evenly split between in-commuters, out-commuters and commuters who live and work in the county.

Since 2000, the combined share of driving alone and carpooling has declined by about 5 percent, as shares of workers who work from home or take transit, walk or bike to work have grown.

Increases in transit use

Most operators saw an improvement in service utilization. Transit boardings in Alameda County increased by 4 percent after several years of decline, stagnation or slow growth.

BART was responsible for the majority of the increase (nearly 3 million new annual

Transportation Planning Updates cont'd on page 4

Policy News

Transportation system economic analysis

The Bay Area Council Economic Institute is conducting an economic analysis for Alameda CTC, "In the Fast Lane: Improving Reliability, Stabilizing Local Funding, and Enabling the Transportation Systems of the Future in Alameda County," which explains why advancing transportation infrastructure is critical for enhancing quality of life and growing regional economic competitiveness.

The number of commuters is rising, and Alameda County is the Bay Area's hub for international and domestic trade — yet transportation funding is increasingly complex, unreliable and dependent on local solutions.

The report will address the economic effect of an \$8 billion transportation sales tax measure on Alameda County's economy and job creation.

Preliminary results indicate that direct spending of [Alameda County's 2014 Plan](#) is estimated to yield \$20 billion in total economic activity in the Bay Area Economy and nearly 150,000 full-time equivalent jobs.



Director's Message cont'd

Visit the [calendar on our website](#) to see when Alameda CTC will be in your city to seek the 2014 Plan approval.

Other planning highlights include the latest [Performance Report](#), which shows increases in regional commuting and transit use. The county added 25,000 new residents, nearly 20,000 jobs, and our transportation system continues to handle growing demands (read more in "Transportation Planning Updates").

Several key [capital projects](#) that will improve commute options are featured in "Project Updates," including the BART Oakland Airport Connector, the I-580 Express Lanes – East Segment Project, and the Route 84 Expressway, among other projects.

Alameda CTC recently recommended additional funding for the Route 84 Expressway project through the State Transportation Improvement Program, a multi-year capital improvement program of transportation projects. Find out more about this program as well as the [City of Piedmont's first Pedestrian and Bicycle Master Plan](#) funded by Measure B in "Programming Updates."

Measure B sales tax revenues and expenditures are just one of the fund types in the finance team's mid-year budget update. Learn more about this as well as about upcoming [contracting opportunities](#) in "Finance Updates."

Looking for outdoor activities? May is [National Bike Month](#), and May 9th is Bike to Work Day — so you may want to tune up your bike. Take the [Team Bike Challenge](#) or join us at one of the upcoming activities and events on page 4.

Sincerely,

ARTHUR L. DAO
Executive Director, Alameda CTC



Photograph provided by BART

First Tow of the New BART Oakland Airport Connector Project Vehicle

Project Updates

Semi-annual status update and highlights

On a semi-annual basis, Alameda CTC prepares a status update of its Capital Projects Program, which includes Measure B (1986 and 2000) and Proposition 1B programs. The 45 active capital projects totaling over \$3.5 billion include a mix of highway, local streets and roads, transit, rail and bicycle and pedestrian improvements funded by federal, state, regional and local fund sources.

Alameda CTC has effectively delivered 80 percent of the active capital projects in the program to construction; projects totaling \$2.5 billion are currently under construction, and an additional \$370 million in projects were recently complete or are in the project closeout phase. The remaining 20 percent of active projects are at various phases in the project delivery pipeline.

Capital project highlights

- **January 2014:** The new BART Oakland Airport Connector vehicles were unveiled and system testing began. The new service connection between the Coliseum BART station and Oakland International Airport is scheduled to open to the public in fall 2014.
- **February 2014:** Construction on the Webster Street SMART Corridors Project in Alameda was substantially complete; system testing is complete.
- **March 2014:** Project approval and environmental document approval for the I-580 Express Lanes – East Segment Project was achieved; this significant

milestone provides full environmental clearance for construction of the express lanes along the I-580 corridor in the Tri-Valley. Construction will begin in fall 2014.

- **April 2014:** The I-880 North Safety and Operational Improvements at 23rd and 29th Ave. Project was advertised for construction in fall 2013 and bids were opened in March 2014. Caltrans is preparing to award the construction contract in April 2014.



Route 84 Expressway North Segment

- **May 2014:** Construction on the Route 84 Expressway – North Segment Project is 82 percent complete; widening of the roadway from Jack London Blvd. to north of Concannon Blvd. in Livermore is anticipated to finish in spring 2014.
- **June 2014:** Construction activities are scheduled to begin on the I-880 North Safety and Operational Improvements at 23rd and 29th Ave. Project in Oakland in summer 2014.

Finance Updates

FY13-14 mid-year budget update

During March, the finance team brought a mid-year budget update for fiscal year 2013-2014 (FY13-14) to the Finance and Administration Committee and the Commission for approval. This budget update includes minor adjustments to the General Fund, Special Revenue Fund, Exchange Fund and Capital Fund to reflect changes in projects and programs since the original budget was developed. The update also reflects actual revenues and expenditures realized as the fiscal year progresses. In addition, it ties the beginning fund balance to the FY12-13 year-end audited financial statements, rolls forward capital balances from FY12-13 and includes a Debt Service Fund to account for funds accumulated to pay principal and interest on bonds issued in March to fund 2000 Measure B capital program needs.

Contracting opportunities

Recently, Alameda CTC received proposals for the Hospital Discharge Transportation and Wheelchair and Scooter Breakdown Transportation Services as well as proposals for the Countywide Multimodal Arterial

Corridor Plan Project. Staff has begun to evaluate the proposals and will award the contracts in May 2014.

Alameda CTC anticipates issuing the following solicitations through summer 2014 for services related to Community-Based Transportation Plans; on-call travel demand modeling; East Bay Greenway Segment 7A project; I-880 Broadway-Jackson Interchange Improvements project; Route 84 Improvements – Pigeon Pass to I-680 project; and I-880 North Safety and Operational Improvements at 23rd and 29th Avenues project. As part of [SC-TAP](#) (see page 4), Alameda CTC will also issue solicitations in April and May for the following: Bikeway Network 2.0, Clement Avenue Complete Street Corridor, Central County Complete Streets Implementation, Citywide Parking Study and Plan, Comprehensive Downtown Circulation Plan, Hayward Downtown Specific Plan, Integrated Transit/Park and Ride Study, Iron Horse Connectivity to BART Feasibility Study, San Leandro Downtown Parking Management Plan, Senate Bill 743 Implementation. For more information, visit the [Contracting Opportunities web page](#).

master plan. For more information, visit the [City of Piedmont's PBMP website](#).

Programming Updates

Measure B funds Piedmont's first Pedestrian and Bicycle Master Plan

Alameda CTC awarded \$102,000 in Measure B bicycle and pedestrian grant funds to finance the City of Piedmont's first-ever Pedestrian and Bicycle Master Plan (PBMP). Measure B grant funds are supporting the city's public outreach efforts, walking audits and data analysis to identify community concerns and their potential transportation-related solutions.

Over the past six months, Piedmont has collaborated with community members to make walking and biking in the city safe, accessible and convenient. Piedmont will use the PBMP as a prioritization tool to guide future funding investments. The PBMP is expected to be complete this summer.

Piedmont is using Measure B direct local program distribution funds in conjunction with the Measure B grant award to develop the

California Transportation Commission adopts 2014 STIP

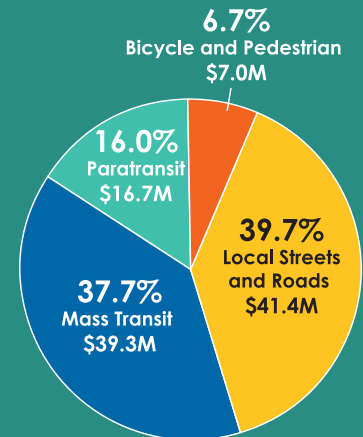
The California Transportation Commission (CTC) recently adopted the 2014 State Transportation Improvement Program (STIP), a multi-year capital improvement program of transportation projects on and off the State Highway System, funded with revenues from the State Highway Account and other funding sources the CTC administers.

Alameda CTC recommended programming its funding share to projects that provide congestion relief and improve the efficiency of the countywide transportation system. The 2014 STIP includes approximately \$32 million for Alameda County transportation improvements such as the AC Transit Bus Rapid Transit and Route 84 Expressway projects.

Transportation Investments

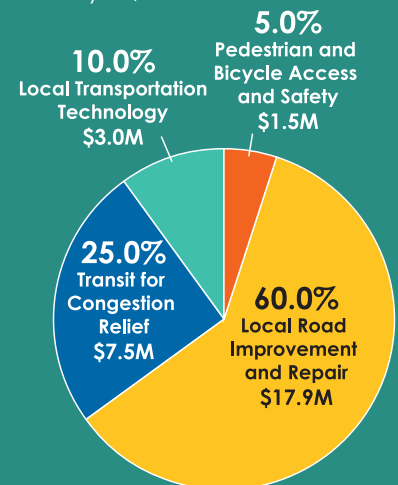
Measure B Program Distributions Since 2000

Alameda CTC has provided more than \$978.7 million in Measure B direct local program distributions since 2000. As of January 2014, Alameda CTC has distributed more than \$104.4 million in FY13-14.



Vehicle Registration Fee Distributions Since 2012

Alameda CTC has distributed nearly \$29.9 million in VRF direct local program distributions through January 31, 2014.



Total Measure B-funded Contracts*

Alameda CTC has funded more than \$837.5 million in contracts for Alameda County businesses since 2000.

* Total contract amount includes additional fund sources.

Outreach and Events

In April and May, Alameda CTC hosts or participates in the following events:

- City Council meetings:
 - April 15 – City of Emeryville
 - April 21 – City of Piedmont
 - May 5 – City of Albany
 - May 20 – City of Pleasanton
 - TBD – City of Alameda
- April 5 – Cinderella Classic at Alameda County Fairgrounds in Pleasanton
- April 9 – Earth Expo with the BikeMobile in Oakland; WTS-SF Transportation Executives Regional Forum in Oakland
- April 16 – Livermore Valley Chamber of Commerce Government Affairs Committee; Association of Pedestrian and Bicycle Professionals (APBP) Webinar at Alameda CTC: Public Health Benefits of Active Transportation
- April 19 – Spring Carnival in Emeryville
- April 22 – City Center Earth Day at downtown Oakland's City Center; Oakland International Airport Earth Day Fair
- April 23 – Senior Health Fair at the North Berkeley Senior Center
- April 24 – Senior Resource Fair at the Albany Senior Center
- April 29 – Business Expo sponsored by the Alameda Chamber of Commerce
- May 1 – Senior Health and Wellness Resource Fair in Castro Valley
- May 5 – 9th Annual Cinco de Mayo con Orgullo in San Leandro
- May 3 – Livermore Chamber of Commerce 23rd Annual Livermore Wine County Festival
- May 6 – Newark Rotary Club
- May 8 – Bike to Work Day
- May 10 – Park Street Business Association Spring Festival in Alameda
- May 14 – An Economic Development Forum sponsored by the Oakland Metropolitan Chamber of Commerce
- May 17 – National Kids to the Park Day with the Bike Mobile
- May TBD - Pleasanton Consumer Showcase at Stoneridge Mall
- May 21 – APBP Webinar at Alameda CTC: Best Planning and Engineering Practices for School Zones
- May 22 – Annual Joint Chamber Business Expo in Berkeley
- May 31 – Berkeley Farmers' Market in downtown Berkeley

Transportation Planning Updates cont'd from page 1

boardings, representing two-thirds of ridership growth in Alameda County). AC Transit also saw an increase in ridership, despite previous service cuts.

Other performance trends

See the full [Performance Report](#) for more information on a number of other performance trends:

- State of good repair is a critical issue, as a number of aging assets require rehabilitation or replacement. Roadway condition has declined, and 20 percent of roadway miles are classified as failed or poor.
- Levels of biking and walking increased throughout the county.
- Safety remains a critical transportation system issue. Collisions have dropped overall, yet more than 6,000 injury or fatal collisions occurred in 2011 (most recent data available).

Alameda CTC will continue to monitor these performance measures and use this information to make effective planning, funding and project delivery decisions.

May Is National Bike Month

[Bike Month](#) is just around the corner! Where are you going to ride?

Challenge yourself to take more bike trips this May. Find out how to do more by joining the [Team Bike Challenge](#), or bike with your family during Bike to School Month.

The East Bay's [21st Annual Bike to Work Day](#) begins May 8, with energizer stations located throughout the county to fuel riders on their way to work. For those whose bicycling skills need a tune-up, free [Bicycle Safety Classes](#) ensure that all riders feel comfortable cycling throughout the county.

To celebrate and promote bicycling, Alameda CTC again partnered with Bike East Bay for the 2014 bike campaign. This year's theme is [I Bike!](#) In April and May, promotional ads that highlight community members who bike will be on AC Transit and Wheels buses, in bus shelters and online in the Patch.

Other News

The Sustainable Communities Technical Assistance Program

Alameda CTC has created an expanded technical assistance program for Alameda County jurisdictions that provides significant support in the form of on-call consultant expertise for Priority Development Area (PDA) planning and implementation, complete streets policy implementation and bicycle and pedestrian planning and engineering technical support.

Through the One Bay Area Grant program, the Metropolitan Transportation Commission allocated funds for local PDA planning and implementation projects, and Alameda CTC combined \$3.9 million of those federal funds with local Measure B funds to create the Sustainable Communities Technical Assistance Program.

In early 2014, Alameda CTC selected 13 projects that applied for funding. Work on the recommended projects is expected to commence by summer 2014. Visit the [SC-TAP web page](#) for more information.



Committee Activities

In April, the following advisory committees met:

- April 3-4 – [Paratransit Program Plan Review Subcommittee](#)
- April 10 – [Alameda County Technical Advisory Committee](#)
- April 10 – [Bicycle and Pedestrian Advisory Committee](#)
- April 24 – [Transportation Expenditure Plan Steering Committee](#)
- April 28 – [Paratransit Advisory and Planning Committee](#) (PAPCO) and Joint PAPCO/[Paratransit Technical Advisory Committee](#)