

APRIL 2013

EXECUTIVE DIRECTOR'S REPORT

Director's Message

EFFICIENT GOODS MOVEMENT

is becoming increasingly important as the population grows and global trade increases. Yet it needs to happen in a way that protects the environment and local communities. Alameda CTC recently nominated Supervisor Haggerty to serve on the Department of Transportation's National Freight Advisory Committee to provide recommendations to support the freight elements mandated by MAP-21 (see "Other News"). In the coming year, Alameda CTC will develop a Goods Movement Plan and strategy for identifying and pursuing investment opportunities.

Other planning activities of note include the [Alameda County PDA Investment and Growth Strategy](#) that *Director's Message cont'd on page 2*

TABLE OF CONTENTS

- 1 **Transportation Planning Updates**
Bike to Work Day on May 9th
Policy News
Legislative working group
- 2 **Project Updates**
BART system expansion provides travelers with choices
- 3 **Programming Updates**
Initial funding recommendations for Measure B Paratransit Gap Grant and Coordinated Funding Programs
Finance Updates
New consolidated investment policy
- 4 **Outreach and Events**
April and May activities
Committee Activities
Highlights of April advisory committees
Other News
Haggerty nominated for National Freight Advisory Committee

Transportation Planning Updates

Bike to Work Day on May 9th

May is [Bike Month](#), and [Bike to Work Day](#), the month's most popular event, will take place on May 9th. To promote and celebrate bicycling, Alameda CTC partnered with the East Bay Bicycle Coalition on the sixth series of [Ride into Life](#) promotional ads, highlighting traveling by bike for commuting, getting to school and having fun.

Based on findings from the [2012 Assessment](#) of Bike to Work Day, the ads include one that targets mothers biking with children to school. For the first time, online ads are being tested. Look for the ads in all parts of the county starting April 15th.



Alameda County Priority Development Area Investment and Growth Strategy

In February 2013, Alameda CTC released the Draft Alameda County Priority Development Area (PDA) Investment and Growth Strategy, which prioritizes PDAs for transportation capital investments during this federal transportation funding

Transportation Planning Updates cont'd on page 2

Policy News

Legislative working group

On April 24, Alameda CTC hosted its second legislative round-table meeting of the year. Participants at these quarterly meetings include agency partners from Alameda County, the cities, transit operators, the Metropolitan Transportation Commission, the Port of Oakland and others interested in coordinating legislative efforts.

Attendees use this forum to discuss legislative platforms and opportunities for unified messages to legislators and the public — such as the long-term economical benefits of an efficient transportation system — as well as collaborative opportunities, such as supporting specific legislation and sharing grant opportunities and other information.

Alameda CTC is also researching additional funding resources, such as grant opportunities, to supplement funding for transportation programs and projects.

Procurement policy in progress

Policy efforts include an agencywide procurement policy to facilitate the contracting process. This document will establish policies, guidelines and procedures to govern the procurement of goods and services including administrative, engineering, professional, construction, operational and other services that will assist Alameda CTC in delivering effective and efficient transportation investments while supporting local business throughout the county.

Director's Message cont'd

Alameda CTC developed with input from many partners. I'm pleased to say it's the first to be adopted in the region and the state (see "Transportation Planning Updates").

Alameda CTC is also leading a legislative working group that met in April to discuss legislative platforms and collaborative opportunities such as additional funding resources (find out more in "Policy News").

When it comes to moving people, two of our BART extension projects are making considerable progress and will be open for revenue service in the next few years. Find out more about the [BART Warm Springs Extension](#) and the [BART Oakland Airport Connector](#) in "Project Updates."

Alameda CTC has three grant funding opportunities in progress. Applications are currently in review for the Measure B Paratransit Gap Grant Cycle 5 Program and the Coordinated Funding Program, and the [Transportation Fund for Clean Air County Program Manager Fund](#) received 12 applications by April 4, 2013 for review (see "Programming Updates").

The finance department recently developed a new consolidated investment policy, and Alameda CTC continues to provide new business opportunities. We advertised six [contracting opportunities](#) in March, including an invitation to bid for a construction contract (see "Finance Updates").

You may want to tune-up your bike if you haven't already. May is [Bike Month](#), and May 9th is Bike to Work Day (see page 1). Looking for other outdoor activities? Join us at one of the upcoming activities and events on page 4.

Sincerely,

ARTHUR L. DAO
Executive Director, Alameda CTC

Project Updates

BART system expansion provides travelers with choices

Transit riders in Alameda County will soon benefit from two new BART extensions under construction. Visible changes to the transit infrastructure are taking shape near the Fremont Station, Fremont Central Park, the Coliseum Station, and the future Oakland Airport Station. The cost of both projects is estimated at approximately \$1.4 billion (\$313.5 million funded by Measure B).

[BART Warm Springs Extension](#)

| | |
|---------------------|-----------------|
| Total Project Cost: | \$890.0 million |
| Begin Construction: | September 2009 |
| End Construction: | December 2015* |

STAGE 1 Central Park Subway (Subway)

| | |
|---------------------|----------------|
| Begin Construction: | September 2009 |
| End Construction: | March 2013 |

STAGE 2 Line Track Stations and Systems (LTSS)

| | |
|---------------------|---------------|
| Begin Construction: | October 2011 |
| End Construction: | December 2015 |

[BART Oakland Airport Connector](#)

| | |
|---------------------|-----------------|
| Total Project Cost: | \$484.0 million |
| Begin Construction: | September 2010 |
| End Construction: | November 2014* |

*Start of revenue service.

The [BART Warm Springs Extension \(WSX\)](#) is being constructed primarily under two contracts (see above), and Stage 1 is

nearly complete. Restoration work of Central Park above the new subway line is progressing steadily. In fall 2012, BART held a milestone celebration event, which included a walk-through of the new subway tunnel. The Stage 2 final design is nearly complete. Crews continue the LTSS trackway construction. Major construction on Stage 2 at Fremont Station will begin in May 2013 and continue through 2014. Foundation work at the new Warm Springs/South Fremont Station will begin soon, and the WSX is expected to open for revenue service in late 2015.

The [BART Oakland Airport Connector \(OAC\)](#) has made significant progress since construction activities began in November 2010. The system's concrete foundation and columns are in place, and installation of the steel guideway above traffic at I-880 and Hegenberger Road is underway. The Airport AGT Station, the maintenance and storage facility, and the new transition building at Coliseum Station are scheduled for completion in 2013. System testing will begin summer 2013 so the new OAC can open for revenue service late 2014.

For recent construction updates related to the [BART WSX](#) and the [BART OAC](#) projects visit the BART website at <http://www.bart.gov/about/projects/index.aspx>.

Transportation Planning Updates cont'd from page 1

cycle and establishes both near- and long-term strategies for supporting ongoing PDA planning, implementation and monitoring. Commissioners; staff from local jurisdictions, the Association of Bay Area Governments and the Metropolitan Transportation Commission (MTC); as well as advocacy organizations provided comments that Alameda CTC incorporated into the final PDA Investment and Growth Strategy that the Commission adopted at its March 2013 meeting.

The [Alameda County PDA Investment and Growth Strategy](#) is the first to be

adopted in the region and the state. In May 2013, Alameda CTC will submit its PDA Investment and Growth Strategy to MTC for review during the summer and fall. Over the next year, Alameda CTC will continue working with the cities and county as well as regional agencies to support PDA development and implementation and to monitor our progress. In May 2014, Alameda CTC will update the strategy with additional information on how well jurisdictions are meeting their housing production goals and supporting efforts to build and maintain affordable housing in PDAs.

Programming Updates

Initial funding recommendations for Measure B Paratransit Gap Grant and Coordinated Funding Programs

Alameda CTC is currently reviewing application proposals submitted for the Measure B [Paratransit Gap Grant](#), [Cycle 5 Program](#) and the [Coordinated Funding Program](#). For the Paratransit Gap Grant Program, Alameda CTC staff and the Paratransit and Planning Advisory Committee will make funding recommendations at the May 2013 Commission meeting for the approximately \$2.0 million available in Measure B Paratransit discretionary funding. Projects recommended for funding will support mobility management and demonstrate increased coordination of services among providers. This is a highly competitive application pool, with a funding request of \$3.6 million collectively from the 17 total applications submitted.

For the Coordinated Funding Program, Alameda CTC staff and subcommittees will make funding recommendations at the

May 2013 Commission meeting for \$65.2 million available from federal One Bay Area Grant, Measure B and Vehicle Registration Fee funding sources. Alameda CTC received over 65 applications for requests of approximately \$120.0 million.

TFCA Call for Projects FY 2013-14 update

The Transportation Fund for Clean Air (TFCA) County Program Manager Fund Call for Projects received 12 applications, totaling over \$2.3 million. Alameda CTC is responsible for programming \$1.8 million in available funding to projects that achieve surplus emission reductions beyond those required through regulations, ordinances or other legally binding obligations. Alameda CTC will review these applications and provide funding recommendations to the Commission in June 2013.

Programming Updates cont'd on page 4

Finance Updates

New consolidated investment policy

Last month, the finance department worked on creating a consolidated Alameda CTC investment policy that will define the parameters within which Alameda CTC will manage funds. The policy will formalize the framework for carrying out investment activities to ensure prudent fiscal and investment fund management. The guidelines within the policy are intended to be broad enough to allow investment officers to function properly within the parameters of responsibility and authority, yet specific enough to adequately safeguard investment assets.

Finance has also worked to consolidate two Other Postemployment Benefit (OPEB) trusts, originally established by ACTIA in 2005 and ACCMA in 2007, into one consolidated Alameda CTC OPEB trust with the California Employers' Retiree Benefit Trust managed by CalPERS.

Six contracting opportunities this spring

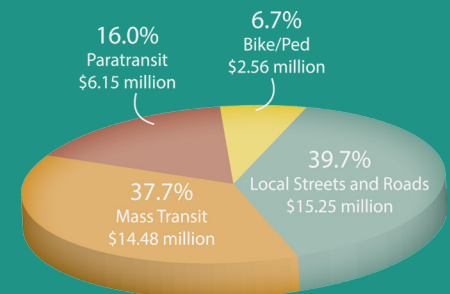
In March 2013, Alameda CTC advertised six contracting opportunities for various professional services and construction contracts. Alameda CTC issued a request for qualifications for on-call services for the Sustainable Communities Technical Assistance Program and four requests for proposals (RFPs) to retain a state legislative advocacy consultant, a federal legislative advocacy consultant, an investment advisor and a consultant to operate the Safe Routes to Schools Program.

Alameda also issued an invitation for bidders for construction of Segment 7A of the East Bay Greenway Project. Alameda CTC anticipates issuing one additional RFP for policy, legislation, communications and administrative support services in fall 2013. For more information, visit the [contracting opportunities web page](#).

Transportation Investments

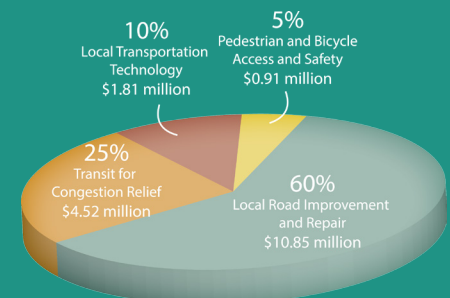
Measure B Program Distributions Since 2000

During the last quarter of fiscal year 2012-2013, Alameda CTC distributed nearly \$38.44 million, and has distributed over \$612.98 million in Measure B pass-through funds since 2000.



Vehicle Registration Fee Distributions Since 2012

Alameda CTC has distributed over \$18.09 million in VRF pass-through funds through January 31, 2013.



Total Measure B-funded Contracts*

Alameda CTC has funded more than \$820.8 million in contracts for Alameda County businesses since 2000.

* Total contract amount includes additional fund sources.

Outreach and Events

In April and May, Alameda CTC is hosting or participating in these outreach events:

- April 1 – Atlantis Bus Fuel & Wash Facility Dedication Ceremony in Livermore



- April 6 – Cinderella Classic at the Alameda County Fairgrounds in Pleasanton
- April 10 – EarthEXPO at Frank H. Ogawa Plaza in Oakland
- April 13 – Ribbon Cutting for the Stanley Boulevard Safety and Streetscape Improvement Project in Pleasanton's Shadow Cliffs Regional Park
- April 17 – Association of Pedestrian and Bicycle Professionals (APBP) Webinar at Alameda CTC: Economic Benefits of Walkable and Bike Friendly Communities
- April 20 – Earth Day at Doyle Hollis Park in Emeryville
- April 21 – Primavera Century Bicycle Tour sponsored by Freewheelers Bicycle Club in Fremont
- April 23 – Bay Area Business Outreach Committee-sponsored Contract Opportunities Session in Oakland
- April 25 – Clean Commutes Fair in Hayward
- April 25 – The City of Albany Senior Resource Fair
- May 1 – Pleasanton Downtown Association's First Wednesdays Street Party (and Cinco de Mayo celebration)
- May 2 – The Hayward Area Recreation and Park District Senior Resource Fair
- May 4 – Livermore Chamber of Commerce 22nd Annual Livermore Wine County Festival
- May 9 – Bike to School and Work Day
- May 11 – Park Street Business Association Spring Festival in Alameda
- May 15 – APBP Webinar at Alameda CTC: Bike Signals

Committee Activities

Highlights of April advisory committees

In April, the following community advisory committees met. Highlights include:

- April 2 – The [Alameda County Technical Advisory Committee \(ACTAC\)](#) approved the Strategic Planning and Investment Policy Implementation, including the 2013 Congestion Management Program Update and 2014 State Transportation Improvement Plan Development Process. The committee also approved the 2013 Alameda CTC Retreat outcomes for planning studies prioritization, the outreach approach and an implementation timeline.
- April 9 – The [Paratransit Technical Advisory Committee \(TAC\)](#) received an update from a community-based transportation provider and an update on the Hospital Discharge Transportation Service and the Wheelchair Scooter Breakdown Transportation Service. Members also exchanged technical information.

- April 11 – The [Bicycle and Pedestrian Committee \(BPAC\)](#) discussed and provided input on Alameda County Transportation Development Act Article 3 projects, the Complete Streets Checklists and the Bicycle Safety Education Program's scope of work. Members also received updates on the Complete Streets Policy adoption and on the Countywide Discretionary Fund Cycle 3 and 4 Grant Program semi-annual progress reports.
- April 22 – The [Paratransit Advisory and Planning Committee \(PAPCO\)](#) made funding recommendations on the Base Paratransit Program and on the Paratransit Gap Grant Cycle 5 Program and received a quarterly report from the Livermore Amador Valley Transit Authority. At the joint PAPCO/TAC meeting, attendees received updates on the One Bay Area Grant Program and on the annual mobility workshop.

Other News

Haggerty nominated for National Freight Advisory Committee

As part of the Federal Transit Administration's Moving Ahead for Progress in the 21st Century (MAP-21) that reauthorized surface transportation programs through fiscal year 2014, a national freight movement plan must be developed and updated every five years. The Department of Transportation is establishing a National Freight Advisory Committee to provide recommendations to support the freight elements mandated by MAP-21. Alameda CTC nominated Supervisor Haggerty to serve on this committee and seeks this as an opportunity for representation on a national level to address freight movement both nationally and locally.

Programming Updates cont'd from page 3

Selected projects are anticipated to reduce motor vehicle emissions through improvements such as bicycle and pedestrian projects, alternative fuel vehicles and rideshare programs. See Alameda CTC's [grants web page](#) for more information.

Join Us at the Next Free Webinar on May 15

Alameda CTC hosts the next Association of Pedestrian and Bicycle Professionals monthly webinar at 1333 Broadway, Suite 300 on Wednesday, May 15 from 12 to 1 p.m. (PST). The topic is "Bike Signals." Feel free to bring a brown bag lunch. The Alameda CTC pays the registration fee, so attendance is free to all.

