

APRIL 2016

# EXECUTIVE DIRECTOR'S REPORT

## Director's Message

This spring, Alameda CTC is pursuing federal FASTLANE and TIGER grants to help deliver two major projects to improve goods movement and highway efficiency. Read more about goods movement improvements at the Port of Oakland in "Project Updates."

This month, we had a successful Washington D.C. visit to share our 2016 Legislative Program, advocate for current legislation and expand our federal and state partnerships. Goods movement was a hot topic, and we received positive feedback about our Countywide Goods Movement Plan and Collaborative and talked about how our projects will support

*Director's Message cont'd on page 2*

## TABLE OF CONTENTS

- 1 Project Updates**  
GoPort
- 2 Transportation Planning Updates**  
Celebrate National Bike Month in May on your own two wheels
- Policy News**  
Legislative advocacy
- 3 Finance Updates**  
Mid-year budget update
- Programming Updates**  
Measure B/BB/VRF direct local distribution performance monitoring
- 4 Outreach and Events**  
April and May activities
- Committee Activities**  
April advisory committee highlights
- Other News**  
Corvallis wins Platinum Sneaker Award

## Project Updates

### GoPort

Alameda CTC introduces a package of transportation improvements to truck and rail access at the nation's fifth busiest marine port: Global Opportunities at the Port of Oakland (GoPort): Expanding Trade, Increasing Freight Efficiency, Creating Jobs.

The GoPort improvements are essential to the global competitiveness of the Port of Oakland, which supports more than 73,000 jobs and provides the Northern California Megaregion's primary connection point to world markets. This redevelopment will create thousands of middle-wage logistics jobs and will provide the combination of modern warehousing facilities and intermodal rail access in close proximity to a major port that today's global shippers demand. It will also greatly reduce diesel particulate matter levels, improving health for local communities. Core improvements include:



### The 7th Street Grade

**Separation project** will alleviate a major chokepoint for intercontinental rail and drayage trucks by eliminating truck-rail and rail-rail conflicts. This project reconstructs an existing railroad underpass west of the I-880 interchange (East Segment) and replaces the three-legged junction of 7th Street, Maritime Street and Navy Road with an elevated, signalized T intersection further to the west (West Segment) to provide a grade separation for a realigned railroad spur. The project aims to reduce local and regional congestion and carbon emissions, increase capacity and improve the flow of trucks and goods

movement along 7th and Maritime Streets in and out of the Port of Oakland facilities.

**The Middle Harbor Road project** will improve safety and operations on a major last-mile access road to three marine terminals that handle half the

Port's volume. This project will include moving marine terminal gates to more efficient locations and reconstructing and realigning the roads to better handle truck queueing, improve driver safety and add bicycle and pedestrian paths for local community access to jobs and to a shoreline park.

**Intelligent transportation systems (ITS) technology** will cost-effectively manage truck arrivals, improve incident response and integrate with regional smart corridor systems. This project evaluates the feasibility of applying ITS, a Freight Advanced Traveler Information System and other available technologies in a port environment to create a safer, stronger and more efficient system for moving people and goods into, out of and around the Port.

Alameda CTC, in partnership with the Port of Oakland and numerous other stakeholders, is seeking federal FASTLANE funds to fund a portion of this \$235 million project. If the federal funds are granted, the project will move forward to completion by 2019.

Alameda CTC plans to procure consultant services including engineering expertise to support development of GoPort in spring 2016. For more information visit the [Contracting Opportunities web page](#).

**Director's Message cont'd**

the National Primary Freight Networks (see "Policy News").

Alameda CTC is also increasing its recruitment efforts to add staff to deliver projects and programs such as the Affordable Student Transit Pass Program in the Measure BB Capital Projects Delivery Plan approved in March 2016 — a group of 20 major, regionally significant transportation improvement projects that span multiple jurisdictions.

For information about open positions at Alameda CTC, visit the [Careers page](#). Local businesses can learn more about contracting and other opportunities in "Finance Updates." The finance team tracks funding available for these opportunities and is working hard on the agency's capital and operating budgets.

New agreements with Measure B and Measure BB fund recipients are also in process, which require reporting on performance. Alameda CTC monitors performance on an annual basis (see "Programming Updates").

May is National Bike Month, and I encourage you to support biking in your community. Watch for the BikeMobile coming to a school near you. If you have a competitive streak like me, join the Team Bike Challenge, or ride to work on Bike to Work Day, May 12 (read more in "Transportation Planning Updates"). Other events that may be of interest are also listed on page 4.

Sincerely,

ARTHUR L. DAO  
Executive Director  
Alameda County Transportation Commission

## Transportation Planning Updates

### Celebrate National Bike Month in May on your own two wheels

Now is a great time to get your bike tuned up and ready to ride. May is National Bike Month! Create or join a [Team Bike Challenge](#) at your workplace for friendly competition. Find out if your school is involved in Bike to School Day and get the whole family rolling.

This year, the East Bay's 22nd annual [Bike to Work Day](#) will be on Thursday, May 12. You can visit energizer stations located throughout the county to fuel riders on their way to work, or join fellow bicyclists for an after-work bike happy hour.

If you want to tune up your bicycling skills, learn theft prevention tactics or get tips for riding at night, Alameda CTC sponsors free Bicycle Safety Classes in English, Cantonese and Spanish to help all riders feel comfortable cycling throughout the county. For more information visit the [Bike East Bay website](#).



Keep your eyes open for the iBike! visual promotion in early May. As in previous years, these ads will be located throughout Alameda County on buses, at bus shelters and at online locations to celebrate and promote bicycling in Alameda County during Bike Month in May. Let us know if you see these promotional ads — we welcome your photos of them out in the field. Please send your pictures to [contact@alamedactc.org](mailto:contact@alamedactc.org).

## Policy News

### Legislative advocacy

Alameda CTC visited Washington D.C. in April to share our 2016 Legislative Program, support current legislation that will improve transportation and continue to strengthen partnerships with federal, state and transportation agency representatives.

Alameda CTC highlighted its 2016 legislative priorities, the newly adopted Countywide Goods Movement Plan and several major projects including GoPort (see "Project Updates"), the I-80 SMART Corridor and the newly opened I-580 Express Lanes.



In addition to partnering on transportation investments to advance project delivery, other topics discussed at the federal level include implementation of Fixing America's Surface Transportation (FAST) Act, a five-year, \$305 billion surface transportation program, including freight and transit provisions and how the FAST Act could support investments in Alameda County and the state.

At the state level, in addition to future partnering and funding opportunities for transportation projects and programs, staff advocated for several bills that support Alameda CTC's adopted legislative program.



## Finance Updates

### Mid-year budget update

In March 2016, the Commission approved a mid-year budget update for FY2015-16. This update reflects changes to revenues and expenditures on projects and programs since the original budget was adopted.

The Commission also approved a policy to govern travel and expenditures, which allows Commissioners to receive reimbursement for actual and necessary costs.

In addition, finance staff began work on developing the annual budget for FY2016-17. The Commission will receive a draft for review in May and the final version for approval in June.

### Contracting opportunities

Over the next six months, Alameda CTC anticipates soliciting bids and proposals for services related to information technology, media and public relations, paratransit coordination, contract equity support and professional and construction services for these and more projects:

- Ashby (SR 13) Multimodal Corridor
- East Bay Greenway – Segment 7A (Maintenance)
- I-580 Freeway Corridor Management System
- I-580/I-680 Interchange
- I-80/Ashby Avenue Interchange with Bicycle and Pedestrian Ramps
- I-880/Industrial Parkway West and I-880 at Whipple Rd./Industrial Parkway Southwest Interchanges
- Intelligent Transportation Systems and Technology Plan
- Middle Harbor Roadway Improvements
- Route 262 Mission Boulevard Cross Connector
- San Pablo (SR 123) Multimodal Corridor
- 7th Street Grade Separation
- System Manager Services for the I-580/I-680 Express Lanes
- Telegraph Multimodal Corridor
- University Multimodal Corridor

For more information, visit the [Contracting Opportunities web page](#).

## Programming Updates

### Measure B/BB/VRF DLD performance monitoring

Over half of revenues generated through the Measure B and Measure BB sales tax programs and the Vehicle Registration Fee Program are distributed directly to 14 cities, the county and five transit agencies as direct local distribution (DLD) funds to support local transportation improvements. This amounts to approximately \$150 million annually used by recipients to support local streets and roads, bicycle/pedestrian, transit and paratransit programs.

Recipients are in the process of entering into new 10-year agreements that outline the recipients' reporting responsibilities to monitor DLD use and performance. Performance includes monitoring quantifiable items such as the amount of sidewalk constructed, pavement sealed, potholes filled, transit riders and services, as well as operational performance. The new agreements, as approved by the Commission in February 2016, are effective July 1, 2016 to June 30, 2026. Recipients are expected to periodically report on the performance of their DLD investments through the annual compliance reporting process, paratransit plan review, annual performance report and other planning reporting.



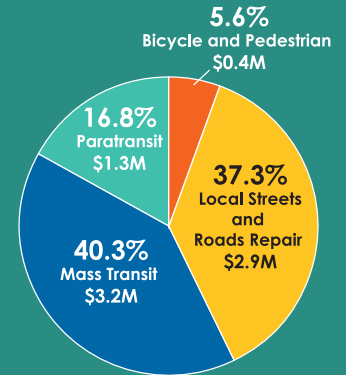
### Transportation Fund for Clean Air FY2016-17 Program

Alameda CTC is responsible for annually programming 40 percent of a \$4 vehicle registration fee collected in Alameda County under the Transportation Fund for Clean Air (TFCA) Program. This program is a local fund source of the Bay Area Air Quality Management District and provides funding for shuttle operations, traffic management systems, [Programming Updates cont'd on page 4](#)

## Transportation Investments

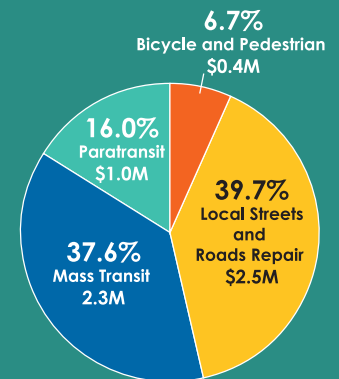
### Measure BB Program Distributions

Measure BB direct local distributions began in April 2015 and now total over \$56.1 million; ~\$7.8 million was distributed in January 2016.



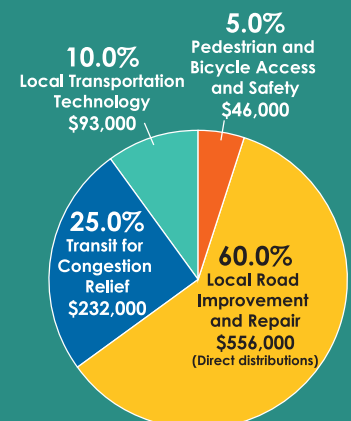
### Measure B Program Distributions

Measure B direct local distributions have totaled more than \$818.8 million since 2002. In January 2016, ~\$6.2 million was distributed for four programs.



### Vehicle Registration Fee

Since 2011, Alameda CTC has distributed over \$32.6 million for local road repair; over \$0.9 million was collected in January 2016.



## Outreach and Events

During the months of April and May, Alameda CTC is hosting or participating in the following events:

- The BikeMobile is coming to a school near you. To find out about the next event in your neighborhood, visit the [BikeMobile calendar](#).
- April 5 – National Safe Routes to School Conference in Columbus, Ohio: Learning From Our Elders and Youngsters
- April 7 – National Safe Routes to School Conference in Columbus, Ohio: Bike Safety Before and After Your Ride
- April 8 – Oakland/San Francisco Regional Transportation Safety Summit at Alameda CTC
- April 13 – Leadership Pleasanton
- April 19 - Workday Earth Week in Pleasanton
- April 20 – Alameda County City Managers' Association meeting in San Leandro; Association of Pedestrian and Bicycle Professionals (APBP) webinar at Alameda CTC: Shared and Separated Off-street Paths
- April 21 – Senior Resource Expo at the Senior Center in Albany; Senior Health Fair at the North Berkeley Senior Center
- April 25 – Paratransit Strategic Planning Workshop at Alameda CTC
- April 29 – Bay Area THINK Forum at Lake Chalet in Oakland; United Seniors of Alameda County's annual convention in Oakland
- May 4 – Older Americans Month Celebration at Frank Ogawa Plaza in Oakland
- May 5 – Senior Health and Wellness Resource Fair in Castro Valley
- May 6 - Seniors and People with Disabilities Transportation Summit sponsored by Solano County in Suisun City
- May 18 - APBP webinar at Alameda CTC: Aspects of Equity
- May 20 – Senior Resource Fair in San Leandro

## Other News

### Corvallis Elementary wins Platinum Sneaker Award

Alameda CTC and the Alameda County Safe Routes to Schools Program are proud to announce that Corvallis Elementary School in San Leandro, part of the San Lorenzo Unified School District, won the 2016 Platinum Sneaker Award. Corvallis students achieved the highest percentage increase in Alameda County schools for its students' walking, cycling, skating or using shared rides to get to school during this year's Alameda County Pollution Solution Golden Sneaker Contest.



On a typical day at Corvallis Elementary, 41 percent of students get to school in environmentally and health-conscious ways. During the contest, however, that number increased to 70.4 percent of students using either active or shared transportation for their daily commutes.

In February and March 2016, more than 70,000 students at 103 schools throughout Alameda County participated in the contest. Representatives from the winning Corvallis Elementary School received the Platinum Sneaker Award during a ceremony at the Commission's March 24, 2016 meeting.

#### *Programming Updates cont'd from page 3*

bicycle and pedestrian projects and alternative-fuel infrastructure.

The individual projects and programs funded by FY 2016-17 TFCA Program funds will be determined by an independent project/program selection process scheduled to begin in May/June. The initial list of candidate projects and programs will be drawn from existing information available to Alameda CTC.

Additional information will be solicited during the selection process to support the TFCA cost-effectiveness evaluation and to determine the recommended final list of projects and programs. A program recommendation is scheduled for September, and the final, Commission-approved, program of eligible projects will be forwarded to the Air District in November 2016.

## Committee Activities

### April advisory committees

Highlights for April community advisory committees include the following:

- April 7 – The [Alameda County Technical Advisory Committee](#) received updates on the 2016 Countywide Transportation Plan, the Alameda County Federal Inactive Projects List and the Metropolitan Transportation Commission Local Streets and Roads Working Group.
- April 7 – The [Bicycle and Pedestrian Advisory Committee](#) received a presentation on the I-80/Gilman Interchange Improvements project, an update on the Bicycle/Pedestrian Count Program and a report on Transportation Development Act Article 3 projects. The committee also received updates on the Capital Project Delivery Plan and the multimodal plans.
- April 25 – The [Paratransit Advisory and Planning Committee \(PAPCO\) and Paratransit Technical Advisory Committee \(ParaTAC\)](#) met jointly to hold a Strategic Planning Workshop. The Committees received an update on and discussed the Taxi Card Feasibility Study and discussed taxi program incentives.

## Webinar: Aspects of Equity

On Wednesday, May 18 from 12-1 p.m. (PST), join us for an Association of Pedestrian and Bicycle Professionals free webinar at Alameda CTC, 111 Broadway, Suite 800. The topic is "Aspects of Equity." Feel free to bring a brown bag lunch. Alameda CTC hosts this event and covers the registration fee, so attendance is free.