

FEBRUARY 2016

# EXECUTIVE DIRECTOR'S REPORT

## Director's Message

Before I get to project and program news, I want to warmly welcome our new Chair Rebecca Kaplan, Vice Mayor of Oakland and Vice Chair Bill Harrison, Mayor of Fremont — representing the two largest cities in the county — as well as Director Rebecca Saltzman of BART. I also want to thank former chair Scott "AAA" Haggerty and Tom Blalock of BART for their exemplary service on the Commission. Chair Kaplan has already moved to create two new standing committees, the Goods Movement Planning Committee and the Transit Planning Committee. Watch for more information on these committees on our [meeting calendar](#).

Other big news: the I-580 Express Lanes are now open, providing a new driving environment for travelers along I-580 through Dublin, Pleasanton and Livermore. The first of its kind in Northern California.

## TABLE OF CONTENTS

- 1 **Project Updates**  
I-580 Express Lanes now open!
- 2 **Transportation Planning Updates**  
Countywide Transportation Plan public outreach
- Policy News**  
Support for Assembly Bill 1591
- 3 **Finance Updates**  
Investment and financial reports
- Programming Updates**  
FY2014-15 compliance reporting
- 4 **Outreach and Events**  
February and March activities
- Committee Activities**  
February advisory committee highlights
- Other News**  
Affordable Student Transit Pass Program

## Project Updates

### I-580 Express Lanes now open!



I-580 Eastbound Express Lanes

As of February 19, 2016, motorists traveling through Dublin, Pleasanton and Livermore have access to almost 30 lane miles of new carpool/express lanes along I-580 that offer reliable travel times and congestion relief through the use of value-pricing technology.

The suite of improvements along I-580 was systematically implemented over the last two decades to improve commuter and freight movement. The completion of these transportation investments is extremely timely, as Alameda County and neighboring counties continue to experience robust economic growth and the significant increase in traffic congestion that accompanies it.

The February 26 ribbon-cutting to open the I-580 Express Lanes will be celebrated by state, regional and local elected officials and mark a significant achievement for Alameda CTC in delivering corridor improvements to the tax payers of Alameda County.

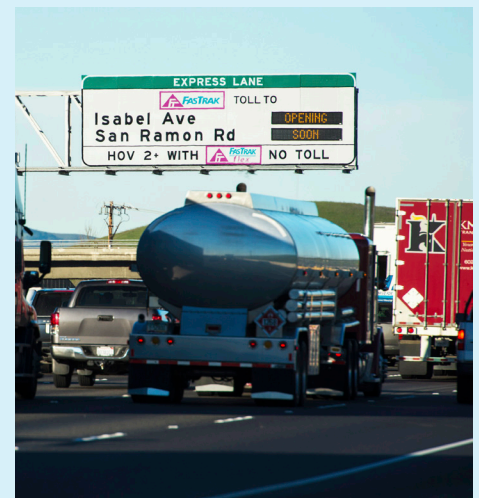
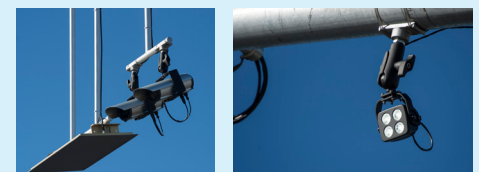
### How express lanes operate

Express lanes are specially-designated carpool/high occupancy vehicle (HOV) lanes that are free for carpoolers with a

FasTrak® Flex toll tag, and give solo drivers the choice to pay a toll to use the lane when there is excess capacity, improving the commute for all motorists.

**A FasTrak or FasTrak Flex toll tag is required for all I-580 express lane users** and can be obtained [online](#) or at Costco, Safeway or Walgreens stores throughout the Tri-Valley. The new lanes will feature near continuous access — so drivers can enter and exit at almost any point, providing easy access to and from local exits.

Upcoming express lane projects may also use FasTrak Flex for HOV users. Opening a FasTrak Flex toll tag account is easy at [www.BayAreaFasTrak.org](http://www.BayAreaFasTrak.org).



I-580 Express Lanes opened February 19

*Director's Message cont'd*

California, this project provides more reliable travel times and reduces congestion. Carpoolers use the lanes for free; solo drivers pay a fee. Everyone that uses the lanes needs a FasTrak® or FasTrak Flex toll tag. Get more information about these exciting improvements in "Project Updates."

Funding these types of projects is a challenge, and the state faces an estimated shortfall of \$60 billion over 10 years to maintain the state highway system. Fortunately, new legislation may help provide much-needed transportation funding. Frazier's Assembly Bill 1591 would raise over \$7 billion annually for trade corridor improvements and highway and bridge maintenance from multiple sources. Alameda CTC is encouraging the state to come up with solutions like this (read more in "Policy News").

More good news for transportation in Alameda County: Revenues collected from Measure B, Measure BB and the Vehicle Registration Fee have increased over the past five years and are expected to continue to increase. Read about this and compliance reporting in "Programming Updates."

The finance team has prepared investment and financial reports as well as kicked off the mid-year budget update process. Find out more about the team's activities and [contracting opportunities](#) in "Finance Updates."

Public outreach continues as part of the Countywide Transportation Plan update process (see "Transportation Planning Updates"), the Affordable Student Transit Pass Program is making progress (see "Other News"), and you may find other events of interest on page 4.

Sincerely,

ARTHUR L. DAO  
Executive Director  
Alameda County Transportation Commission

## Transportation Planning Updates

### Countywide Transportation Plan public outreach

The 2016 update to the [Countywide Transportation Plan \(CTP\)](#) will result in a performance-based, long-range plan through 2040 for Alameda County's multimodal transportation network. In early 2016 Alameda CTC is holding a series of open houses, focus groups and public meetings to identify transportation investment priorities and educate the public about our planning efforts.

- **Transportation Open Houses:**

In January and February 2016 Alameda CTC, together with transit partners AC Transit and Livermore Amador Valley Transit Authority/ Wheels, hosted [Transportation Open Houses](#) in Dublin, Fremont, Hayward and Oakland. These events provided opportunities for area residents to discuss and share their transportation priorities. Participants learned about public transit, roadways, trucking and goods movement.

- **Focus groups:** In March 2016 Alameda CTC is conducting a series of surveys in communities within the unincorporated Cherryland/Ashland area and in the cities of Alameda, Berkeley and Oakland. From 2004-2009 residents from these five areas participated in developing Community Based Transportation Plans to better assess and address transportation needs and gaps. This effort gives residents an opportunity to provide input on progress made and identify new gaps and transportation priorities.

- **CTP updates at Alameda CTC public meetings:** In spring 2016 at the Commission and Committee meetings, the public will receive an update on the progress of the CTP including the initial equity findings and evaluation results. The draft CTP will be presented publicly in May, and the final plan will be presented for adoption in June. See the [meeting calendar](#) for more information about upcoming public meetings.

## Policy News

### Support for Assembly Bill 1591

Assemblymember Jim Frazier, chair of the Assembly Committee on Transportation, introduced a bill in January 2016 to dramatically improve transportation funding for California. AB 1591 would raise funding for trade corridor improvements and highway and bridge maintenance from multiple sources.

The bill is estimated to raise over \$7 billion annually at a time when a shortage of funding has resulted in roadway and bridge disrepair, potential safety issues and less efficiency on trade corridors that are paramount for movement of goods and economic growth.

In a press release from the California State Assembly Democratic Caucus, Frazier says, "California must invest in its trade corridors if we hope to develop and sustain economic vitality. Manufacturers and farmers want to be able to move their goods to market and AB 1591 will provide the investments we need to ensure that they can."

In February 2016, the Commission may choose to formally support this innovative bill.





## Finance Updates

### Investment and financial reports

The finance team prepared the fiscal year 2015-16 second quarter investment report and the FY2015-16 second quarter financial report and presented them at the February Finance and Administration Committee meeting. These reports demonstrate the financial condition of the agency as compared to the budget as of December 31, 2015. The finance team also prepared the FY2015-16 second quarter Sunol Smart Carpool Lane Financial report for presentation at the February Commission meeting.

In addition, the agency has kicked off the mid-year budget update process. This collaborative effort engages all working groups, which will update the FY2015-16 budget based on updated information and actual costs incurred through December 31, 2015. The mid-year budget update is expected to go to the Commission for approval in March 2016.

### Contracting opportunities

Alameda CTC recently completed the procurement process for the overall monitoring services for elements of the Congestion Management Program and the toll system integration design and installation services for the I-680 Sunol Express Lane – Northbound from South Grimmer Boulevard to North of State Route 84 Project.

Alameda CTC anticipates issuing an invitation for bids for maintenance services for the East Bay Greenway Project – Segment 7A and requests for proposals for several administration contracts related to information technology, media and public relations, paratransit coordination services and contract equity support services in early 2016. For more information, visit the [Contracting Opportunities web page](#).



I-680 HOV Lanes

(Courtesy of California Department of Transportation)

## Programming Updates

### FY2014-15 compliance reporting

Revenues collected through the Measure B, Measure BB and Vehicle Registration Fee (VRF) programs are distributed to 20 local agencies to support local transportation improvements ranging from local street and road projects, to bicycle/pedestrian improvements, transit and paratransit operations. To ensure these funds are used expeditiously and on eligible expenses, Alameda CTC conducts an annual program compliance process that requires recipients to submit independent audited financial statements and program compliance reports at the end of December.

Alameda CTC, in conjunction with the Independent Watchdog Committee, is currently reviewing the reporting information for fiscal year 2014-15 to determine program compliance. A summary program compliance report will be presented to the Commission in the late-spring time frame. FY2014-15 reports for each recipient agency can be viewed on the [Alameda CTC website](#).

### Direct local distribution FY2015-16 projections

Alameda CTC distributes approximately 60 percent of net revenues collected through the Measure B, Measure BB, and Vehicle Registration Fee (VRF) programs to support annual pavement rehabilitation projects, sidewalk projects, maintenance activities and various transportation operations.

Over the past five fiscal years, total revenue collected through the Measure B and Measure BB sales tax programs and the Vehicle Registration Fee program have increased and are anticipated to increase for FY2015-16.

Revenue Collections			
	Measure B	VRF	Measure BB
FY2010-11 <sup>1</sup>	\$100,651,092	\$879,683	
FY2012-12	\$107,502,529	\$11,630,021	
FY2012-13	\$115,635,965	\$11,461,800	
FY2013-14	\$119,558,971	\$12,035,991	
FY2014-15 <sup>1</sup>	\$123,408,549	\$12,283,109	\$25,078,100
FY2015-16 <sup>2</sup>	\$125,701,875	\$12,000,000	\$128,304,000

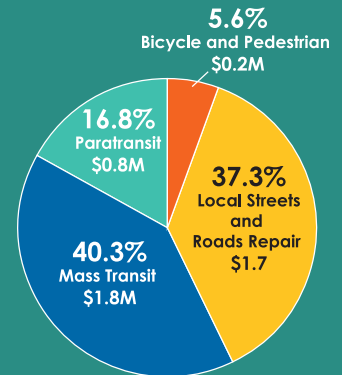
1. Program initiation year for VRF and Measure BB.

2. Projected amount.

## Transportation Investments

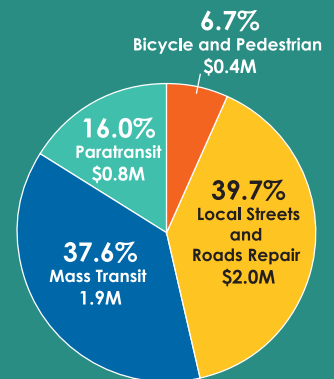
### Measure BB Program Distributions

Measure BB direct local distributions began in April 2015 and now total over \$42.0 million; over \$4.5 million was distributed in November 2015.



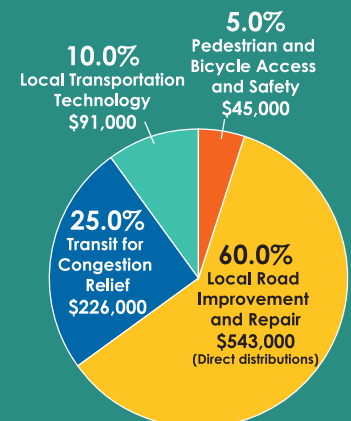
### Measure B Program Distributions

Measure B direct local distributions have totaled more than \$805.8 million since 2002. In November 2015, over \$5.1 million was distributed for four programs.



### Vehicle Registration Fee

Since 2011, Alameda CTC has distributed nearly \$31.5 million for local road repair; over \$0.9 million was collected in November 2015.



## Outreach and Events

In February and March, Alameda CTC is hosting or participating in the following events:

- February 4 – I-580 Express Lanes discussion with the Dublin Chamber of Commerce Economic Development Committee; 3rd Annual Transportation Executives Regional Forum in Oakland
- February 6 – League of Women Voters of the Bay Area's Annual Regional Meeting: A Forum on Transportation at Maple Hall in San Pablo
- February 10 – California Freight Advisory Committee at Alameda CTC offices with an update on goods movement
- February 11 – East-West Connector Project update meeting with the community at Union City Hall
- February 17 – Bike-Walk Castro Valley in Castro Valley; Association of Pedestrian and Bicycle Professionals (APBP) webinar at Alameda CTC: Planning for Facility Maintenance and Management Costs
- February 22 – Paratransit Strategic Planning Workshop at Alameda CTC: Countywide Transit Plan and Paratransit Needs Assessment
- February 23 – A Transportation Open House at Alameda CTC offices; I-580 Express Lanes/FasTrak event at Hacienda Business Park in Pleasanton
- February 24 – Business Expo in Dublin
- March 1 – Mobility and Transit Workshop and Fair in San Leandro
- March 4 – California Society of Municipal Finance Officers Annual Conference in Anaheim, CA
- March 12 – Transition Information Faire in Alameda
- March 16 – County Update sponsored by Alameda County Supervisor Wilma Chan, District 3 in San Lorenzo; APBP webinar at Alameda CTC: Understanding the Funding Process
- March 23 – Federal Highway Administration Freight Economy Roundtable at Alameda CTC
- March 24 – National Association of Counties meeting at Alameda CTC offices

## Other News

### Affordable Student Transit Pass Program



Alameda CTC hosted an Affordable Student Transit Pass Program Workshop on Wednesday, January 27, 2016 that gave students, transit agencies, local jurisdictions and transportation advocates the opportunity to learn about and discuss existing local youth transit pass programs. Participants received the following presentations:

- Free Muni Youth Program by the San Francisco Municipal Transportation Agency.
- Alameda County Safe Routes to Schools by Alta Planning and Design.
- Student Bus Pass Program by the West Contra Costa Transportation Advisory Committee.

Participants also discussed progress to-date on the pilot program that will help middle-school and high-schools students in Alameda County get to school affordably and improve access to after-school activities and jobs. At the workshop on February 18, 2016, participants continued discussing these topics along with the program framework and planned approach.

### Webinar: Understanding the Funding Process

On Wednesday, March 16 from 12-1 p.m. (PST), join us for an Association of Pedestrian and Bicycle Professionals free webinar at Alameda CTC 1111 Broadway, Suite 800. The topic is "Understanding the Funding Process." Feel free to bring a brown bag lunch. Alameda CTC hosts this event and covers the registration fee, so attendance is free.

## Committee Activities

### February advisory committees

Highlights for February community advisory committees are as follows:

- February 4 – The [Alameda County Technical Advisory Committee](#) (ACTAC) approved the final Countywide Goods Movement Plan, Master Programs Funding Agreements and Performance Measures for direct local distributions and the three-year Project Study Report/Project Initiation Document Work Plan for Alameda County. In addition, ACTAC received an update on the 2016 State Transportation Improvement Program and a draft fund estimate for Transportation Fund for Clean Air FY2016-17 Program.
- February 22 – [Paratransit Advisory and Planning Committee](#) (PAPCO) met jointly with the Paratransit Technical Advisory Committee to hold a Paratransit Strategic Planning Workshop. The committees received an update and provided input on the Countywide Transit Plan. Committee members also received an update and provided input on the current needs assessment effort.

