



# Delivering Transportation Solutions for a Vibrant, Livable Alameda County

A Presentation on the  
2012 Alameda County  
Transportation Expenditure Plan



# Alameda County Transportation Commission

- Newly founded agency in July 2010
- Streamlined operations and enhanced delivery
- The Alameda CTC Commission is comprised of 22 members, with the following representation:
  - *All five Alameda County Supervisors*
  - *All cities*
  - *AC Transit and BART*

Mayor Green , Chair

Supervisor Haggerty, Vice Chair



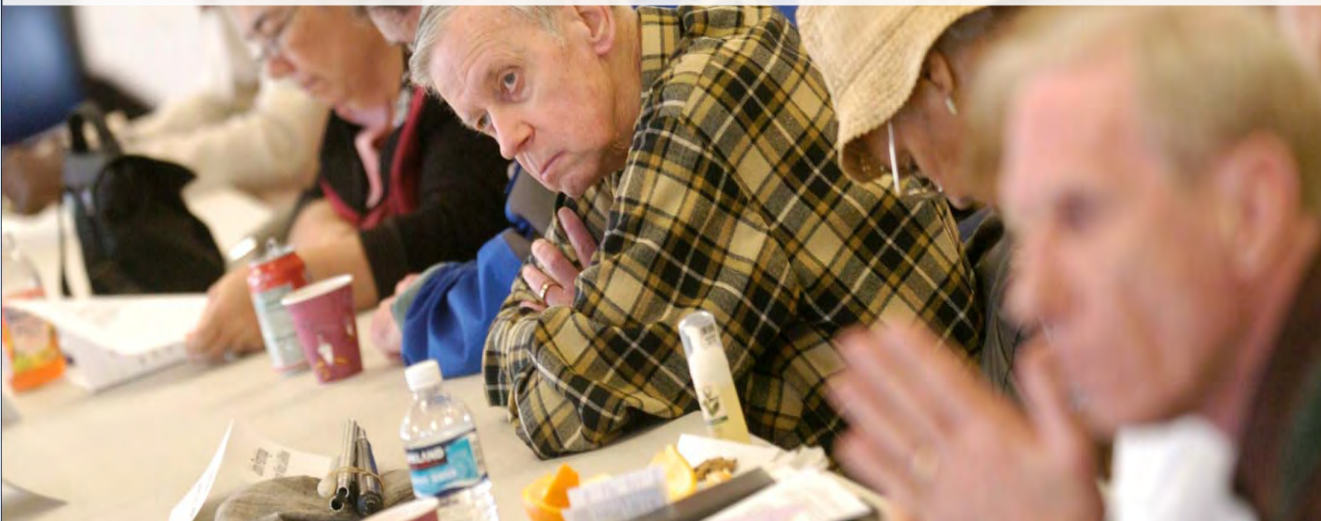
# Successes: Exceptional Value

- 100% clean audits for 10 years
- Citizens Watchdog Committee (CWC) reviews and reports annually to the public
- Merger saves taxpayers over \$3 million
- Close work with regional, state and federal governments to fund valuable programs to:
  - *Extend the life of aging infrastructure*
  - *Increase safety*
  - *Protect the environment*
  - *Improve transportation access for all communities*
  - *Create jobs*



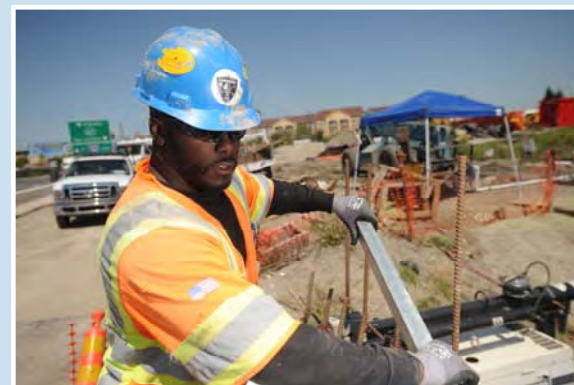
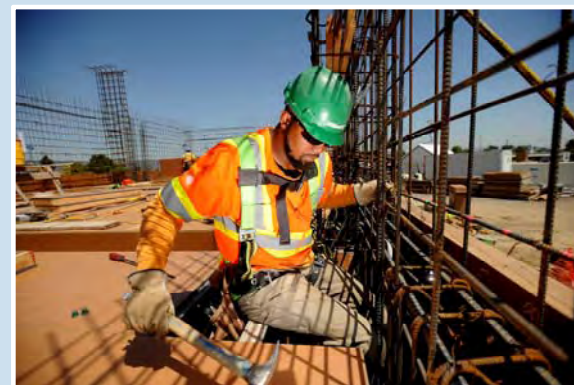


We plan, fund and deliver to expand access, improve mobility and foster a vibrant and livable Alameda County.



# Successes: Economic Vitality

- Job creation through contracts with local companies
- More efficient movement of people and goods that stimulates the economy
- Investments in transportation systems to attract and retain businesses
- Over \$495 million in the past decade to Alameda County businesses



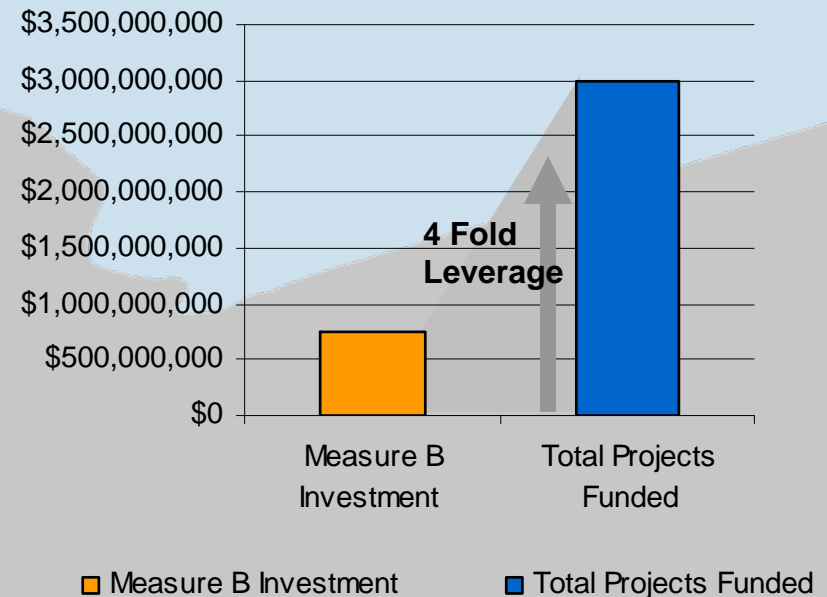
# Leveraging Dollars Supports Economy

- Measure B

- *\$756 M in capital investments results in over \$ 3 B in projects*
- *Almost half a billion in local pass-through funds support, maintenance, operations, programs and services*

- State and Federal Funds  
*(since 2000)*

- *Alameda CTC attracted over \$560 M for transportation investments; many of which support Measure B investments*





# Economic Vitality: BART to Warm Springs

## BART to Warm Springs (WSX)

Sponsor

**Bay Area Rapid Transit  
(BART)**

Cost Estimate

**\$ 890M**

2000 Measure B

Commitment

**\$ 224.4M**

Construction

**Under Construction**

*Anticipated Completion:*

**2015**

- Expands critical commuter rail line in Alameda County
- First stage for extension to Silicon Valley
- Expanded access to jobs utilizing transit



# Economic Vitality: BART Oakland Airport Connector

## BART Oakland Airport Connector (OAC)

### Sponsor

**Bay Area Rapid Transit  
(BART)**

### Cost Estimate

**\$ 484.1M**

### 2000 Measure B Commitment

**\$ 89M**

### Construction (DBOM)

**Under Construction**

*Anticipated Completion:*  
**May 2014**

- Connects Coliseum Station to Oakland International Airport
- Provides better transportation access for people traveling to and from the region
- Provides local jobs and strengthens the economy





# Improved Mobility: Congestion Relief

## I-238 Widening Project

- Helped reduce congestion on major connector corridor between I-580 and I-880; Ribbon Cutting Ceremony held October 2009

## Route 84 Expressway

- Moved freeway cut-through traffic out of downtown Livermore
- Expands direct freeway to freeway access from I-580 to I-680; Groundbreaking Summer 2012



# Forward-Thinking Solutions



## I-80 Integrated Corridor Mobility

- Innovative solutions for most congested East Bay highways
  - *Ranked one of the most important bond projects*
  - *Real-time closed-circuit cameras and changeable message signs*
  - *Ramp metering to manage congestion*

## I-680 Southbound Express Lanes

- First express lane in Northern California
  - *Offers solo drivers a choice to pay to use the carpool lane to avoid congestion*
  - *Provides safe and reliable trip times*

# Community Benefit: Safe Routes to Schools

## Safe Routes to Schools

Sponsor  
**Alameda CTC**

Cost Estimate  
**\$ 2.3M**

2000 Measure B  
Commitment  
**\$ .27M**

**Countywide**

- Encourages children to walk and bike to school
- Increases children's health
- Decreases carpools, congestion and pollution

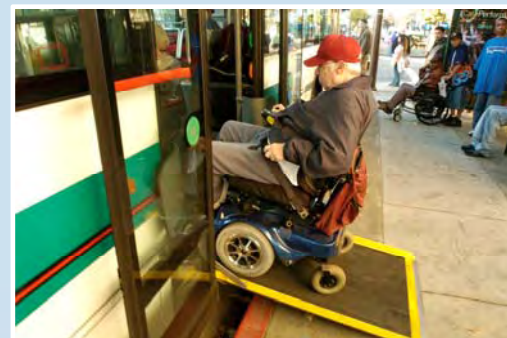




# Community Benefit: Travel Training

## Travel Training for Seniors

- Trains seniors and persons with disabilities to ride AC Transit, BART and other transit in Alameda County
- Engages ethnic communities and non-English speakers
- Fosters community and social support networks



# Improved Mobility: Maintenance, Operations, Safety

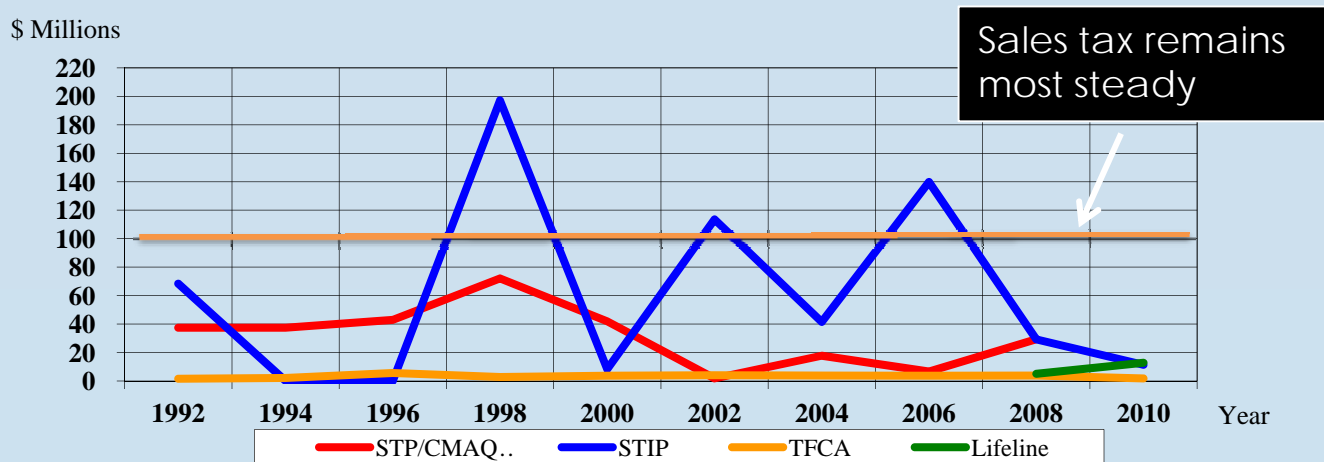
Direct allocations to local jurisdictions and transit operators

- Local Streets and Roads
- Bicycle and Pedestrian Safety projects and programs
- Transit operations: rail, bus and ferry
- Special Transportation for Seniors and People with Disabilities (Paratransit)



# Key Factors Affecting Transportation

- Decreased funding and volatility create challenges for adequately delivering multimodal needs

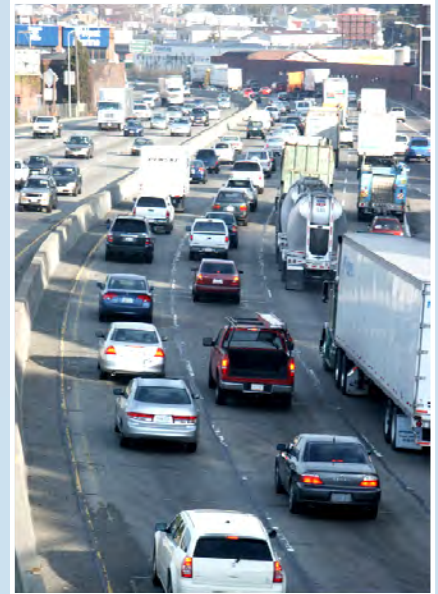


- Legislative mandates:
  - AB32: Global Warming Solutions Act – reduce GHG emissions to 1990 levels by 2020*
  - SB 375: Transportation planning, sustainable communities strategy, environmental review to reduce GHG emissions*



# Alameda County Today

- Second largest county by population in Bay Region: 20% of population
- Home to 14 cities, major universities, international port/airport
- 40% of Bay Area congestion is in Alameda County
- Population growing – expected to be almost 2 million during planning horizon, major increase in senior population
- One of the 19 Self-Help Counties in California



# Planning Solutions

- New plans to meet future needs
- Developed the Countywide Transportation Plan and the 2012 Transportation Expenditure Plan to continue investments in Alameda County
  - *New plans build off of existing successes and expand opportunities*



# Looking to the Future: Transportation Expenditure Plan (TEP)

- A\$7.8 billion plan for initial 30 years
- Legislation allows for a one-time opportunity to augment sales: November 6, 2012
- Accountability measures
  - Independent Watchdog Committee
  - Continuation of other public committees
  - Strict environmental, full funding and reporting requirements
  - Commitment to modes
  - Complete Streets requirement
  - Performance and accountability measures in every contract
  - Voter check in and approval of new plan every 20 years



# 2012 TEP Development

- Culmination of two-year process:
  - *Steering Committee – 13 elected officials*
  - *CAWG – 27 members*
  - *TAWG – 58 participants*
- Extensive outreach throughout the County
  - *Over 40 public meetings specifically on CWTP-TEP development, 2 public opinion polls (over 2/3 support)*
- Analysis of over 300 applications submitted as part of spring 2011 call for projects and how to leverage current investments to meet Plan's vision and goals
- Responsible investments with extensive safeguards to achieve 2/3 voter approval



# TEP Summary

- Investments are focused on a \$7.8 billion multimodal plan over 30 years
  - *Mass Transit – 48% (\$3.7B)*
    - Senior/Disabled Transportation
    - Student Transit Pass Program
  - *Local Streets & Roads – 30% (\$2.3B)*
    - Freight and Economic Development
  - *Highway Maintenance and improvement – 9% (\$677M)*
    - Freight and Economic Development
  - *Safety Bike and Pedestrian routes – 8% (\$651M)*
  - *Sustainable Land Use and Transportation – 4% (\$300M)*
  - *Technology and Innovation – 1% (\$77M)*

# Public Transit Overview

- Public Transit = \$3.7 billion, 48% of funds
  - *Mass Transit: Operations, Maintenance, and Safety Program* – \$1,857M, 24%
    - Student transit pass program \$15M
    - Innovative grants: successful youth transit pass programs receive priority
  - *Specialized Transit For Seniors and Persons with Disabilities* – \$774M, 10%
  - *Bus Transit Efficiency and Priority* – \$35M, 0.5%
  - *BART System Modernization & Expansion* – \$710M, 9.2%
  - *Regional Rail Enhancements* – \$355M, 4.6%





# Local Streets & Roads Overview

- Local Streets & Roads = \$2.3 billion, 30% of funds
  - *Major Commute Corridors, Grade Separations, Seismic Safety, Freight\** – \$800M, 10%
  - *Local Streets & Roads pass-through program to cities and County* – \$1,548M, 20%

*\* Funds will be allocated through the Capital Improvement Program every two years, based on readiness and geographic equity. Complete streets requirement.*



# Highway Efficiencies & Freight

- Highway Efficiencies & Freight = \$677 million, 8.7% of funds
  - *Highway Capital Projects – \$600M, 7.7%*
    - I-80 Improvements
    - Route 84 Improvements
    - I-580 Improvements
    - I-680 Improvements
    - I-880 Improvements
  - *Freight & Economic Development – \$77M, 1%*
    - Port of Oakland is 5<sup>th</sup> busiest container port in Country



# Bicycle and Pedestrian Overview

- Bicycle & Pedestrian = \$651 million, 8.4% of funds
  - *Gap Closure on Three Major Trails: Iron Horse, Bay Trail and East Bay Greenway/UPRR Corridor – \$264M, 3.4%*
  - *Bike and Pedestrian pass-through program to cities and County – \$230M, 3%*
  - *Bike and Pedestrian grant program for regional projects and trail maintenance – \$153M, 2%*



# Sustainability, Land Use, Technology

- Sustainable Land Use & Transportation = \$300 million, 4% of funds
  - *PDA/TOD Infrastructure Investments\** – \$300M, 4%
- Technology, Innovation & Development = \$77.4 million, 1% of funds

*\* Funds will be allocated through the Capital Improvement Program every two years, based on readiness and geographic equity. Complete streets requirement.*





# What the TEP does for the County

- **Fix it First:** 70% of the funds are dedicated to maintaining and operating the existing system
- **Sustainable communities and GHG reduction**
  - *60% of funds support SCS implementation*
  - *CWTP shows GHG reductions of 24-25% per capita*
    - CWTP and TEP investments aligned in final CWTP
  - *TOD/PDAs capital investments*  
*Major bike, pedestrian and transit funding increases*
- **Geographic equity**
- **Essential multimodal investments**



# TEP Projects for Northern and Central Alameda County

- I-80, I-580 and I-880 interchange improvements
- I-880 northbound carpool/HOT lane extension
- AC Transit Bus Rapid Transit (BRT)
- Bayfair Connector/BART METRO
- East Bay Greenway gap closure and access projects
- Bay Trail gap closure and access projects
- BART Station, Transit Village improvements and area enhancements
- Transit oriented development (TOD) and streetscape improvements
- Improvements on freight corridors such as Outer Harbor Intermodal Terminal, 7th Street grade separation and truck routes serving the Port of Oakland
- Oakland Army Base transportation infrastructure improvements
- Over 100% more operating funding for AC Transit to increase/restore services
- Capitol Corridor service enhancements

# TEP Projects for Southern and Eastern Alameda County

- I-580, I-680 and I-880 interchange improvements
- I-680 carpool/HOT lane
- I-680/I-880 and East/West Connector
- State Route 84 improvements
- BART to Livermore extension
- Capitol Corridor service enhancements
- Dumbarton Rail Corridor
- Irvington BART Station
- East Bay Greenway, Bay Trail and Iron Horse Trail gap closure and access projects
- Union City Intermodal Station and Dumbarton TOD infrastructure improvements
- BART Station improvements and area enhancements
- Fremont Boulevard streetscape improvements

# TEP Support

- Alameda County Board of Supervisors
- 14 cities support the TEP
  - **North County:** Alameda, Albany, Berkeley, Emeryville, Oakland and Piedmont
  - **Central County:** Hayward and San Leandro
  - **South County:** Fremont, Newark and Union City
  - **East County:** Dublin, Livermore and Pleasanton
- AC Transit
- BART

## Additional Support

- ✓ Alameda Building Trades
- ✓ Alameda Labor Council, AFL-CIO
- ✓ East Bay Regional Park District
- ✓ East Bay Bicycle Coalition
- ✓ United Seniors of Oakland and Alameda County
- ✓ Carpenters Local 713
- ✓ Center for Independent Living
- ✓ Bay Planning Coalition
- ✓ Albany Strollers and Rollers
- ✓ Walk Oakland Bike Oakland
- ✓ TransForm
- ✓ East Bay Economic Development Alliance
- ✓ Metropolitan Transportation Commission
- ✓ Oakland Metropolitan Chamber of Commerce
- ✓ Chinatown Chamber of Commerce
- ✓ Port of Oakland
- ✓ Chambers of Commerce
- ✓ SEIU Local 1021
- ✓ State and federal elected officials



# TEP Schedule

- June 2012 – Board of Supervisors placed the TEP on the ballot
- **November 6, 2012 – TEP on the ballot as Measure B1**
  - *Requires 2/3 vote*



# Questions

For more information:

[www.AlamedaCTC.org](http://www.AlamedaCTC.org) or (510) 208-7400

Find us on Facebook: Facebook.com/AlamedaCTC

And Twitter: @AlamedaCTC

