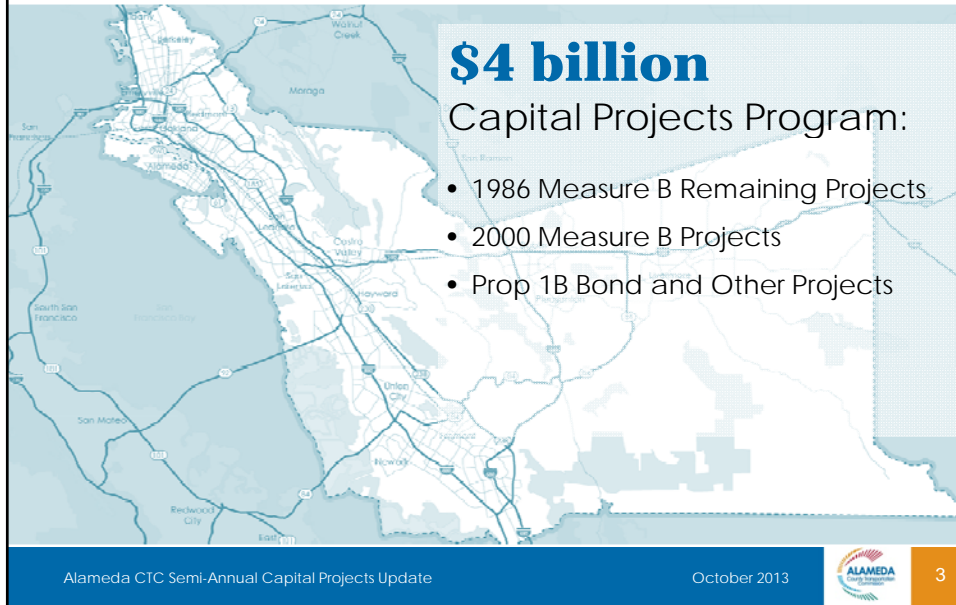


Presentation Overview

Alameda CTC Active Capital Projects Update:

- Program Summary
- Status Update by Program
 - 1986 Measure B Projects
 - 2000 Measure B Projects
 - Proposition 1B "I-Bond" and Other Projects
- Recently Achieved Milestones
- Upcoming Milestones

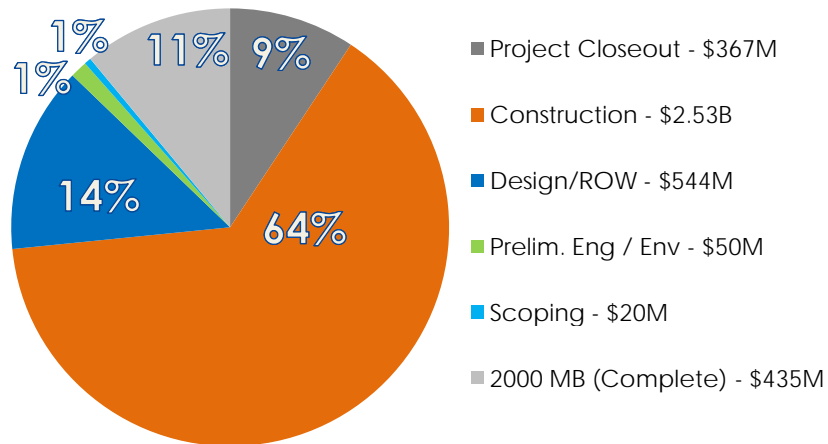
Program Summary



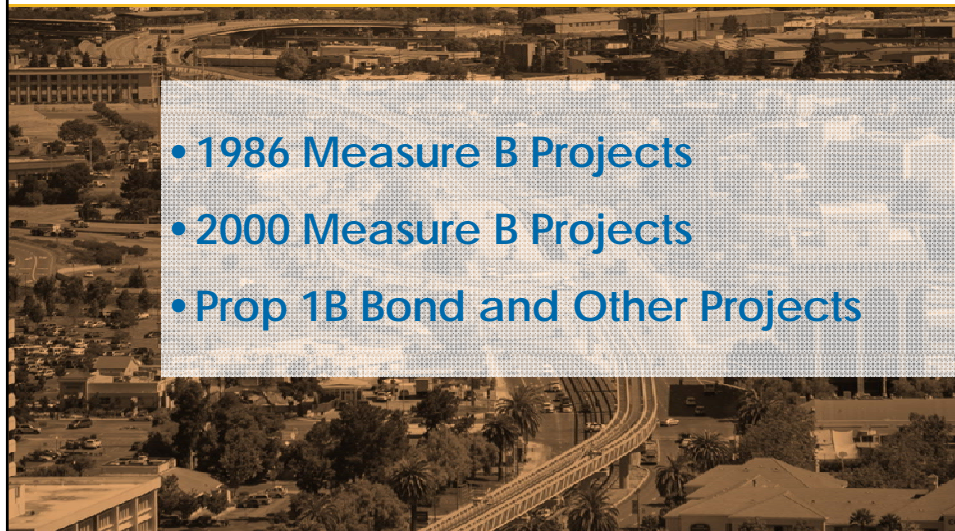
Active Capital Projects Location Map



Active Capital Projects by Phase



Status Update by Program



- 1986 Measure B Projects
- 2000 Measure B Projects
- Prop 1B Bond and Other Projects

1986 Measure B Projects

Current Status of the 4 remaining projects:

- **Route/238 Mission-Foothill-Jackson Corridor Improvement Project** currently in the closeout phase
- **I-880/Mission Boulevard (Route 262) Interchange Completion Project** currently in construction with expected completion mid-2015
- **Castro Valley Local Traffic Circulation Improvement Project** is a Study only project which is expected to complete at the end of 2013
- **I-880 Mission Boulevard East-West Connector Project** is in Final Design and currently on hold pending identification of funding

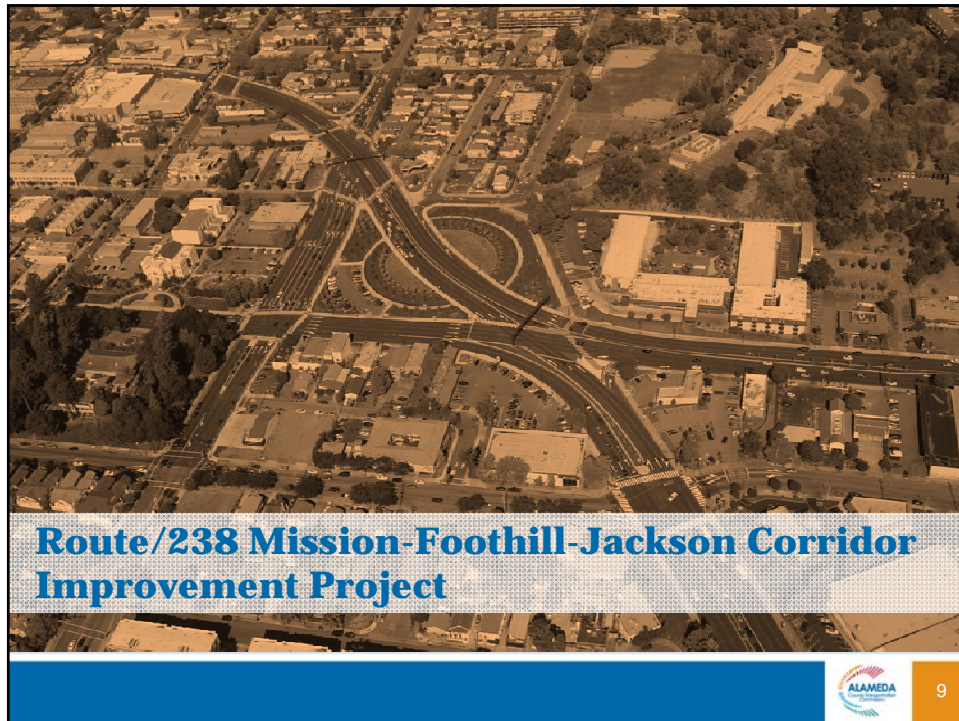
Remaining Project Commitments

1986 MEASURE B

Project No.	Project Title	Remaining Commitments* (\$ x 1,000)
MB226	I-880 to Mission Boulevard East West Connector	73,537
MB239	I-580/Redwood Road Interchange (contribution to ACTIA 12)	4,821
MB240	Central Alameda County Freeway System Operational Analysis	3,153
MB241	Castro Valley Local Area Traffic Circulation Improvement	4,463
MB Var	Program-wide and Project Closeout Costs	5,589
Totals		\$ 73,863

**Commitment totals include FY 13/14 and beyond*

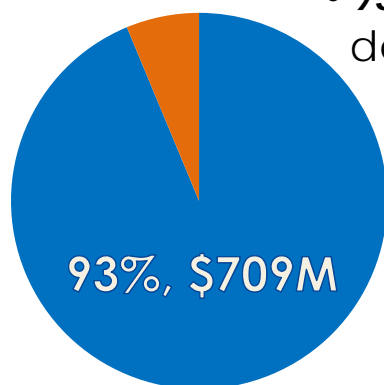
Note: Total 1986 Measure B Commitment to individual projects shown above were established in Amendments 1 and 2 to the 1986 Expenditure Plan.





11

2000 Measure B Projects



- 93% of the program delivered in 11 years:

- Capital Project commitment totaling \$756.4 million
- \$709 million in funding allocated since the start of the program in 2002

■ 2000 Measure B - Allocated

■ 2000 Measure B - Un-Allocated



12

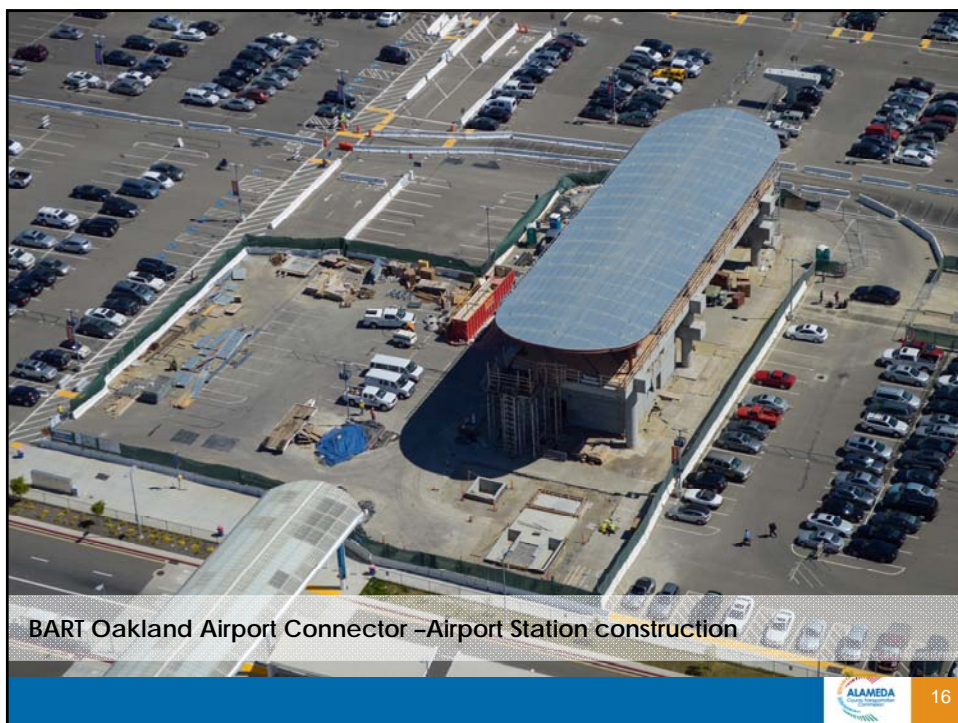
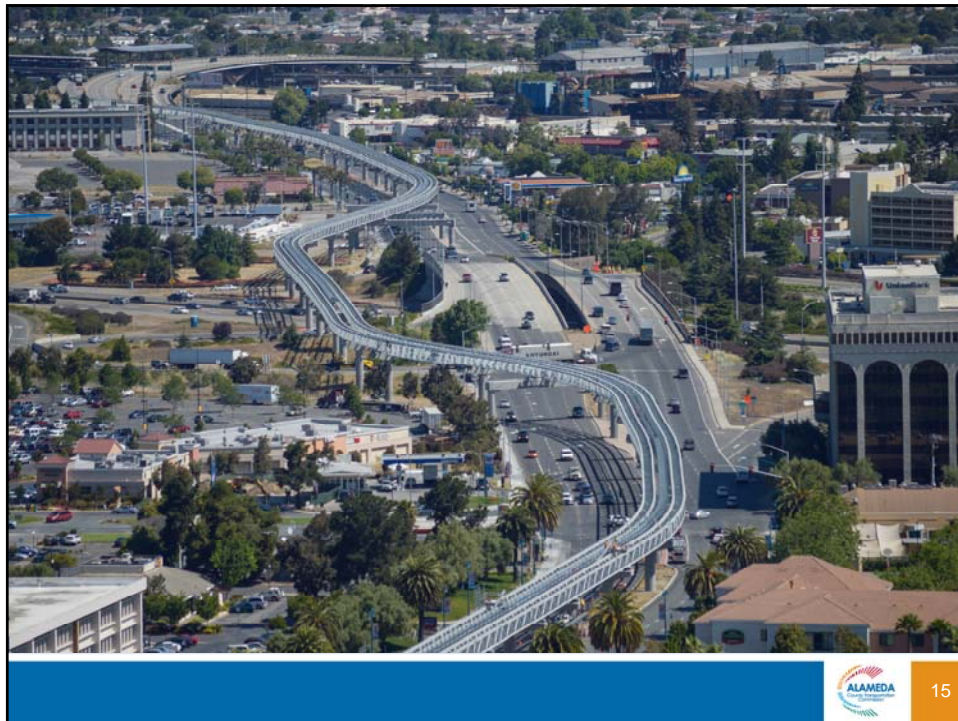
Remaining Project Commitments

2000 MEASURE B

Project No.	Project Title	Remaining Commitments (\$ x 1,000)
01	ACE Capital Improvements	2,000
08A	I-680 Express Lane - Southbound	4,500
08B	I-680 Express Lane - Northbound	5,500
09	Iron Horse Transit Route	6,267
15	I-880/Route 92/Whitesell Drive Interchange	14,432
23	Isabel Avenue – Route 84/I-580 Interchange	1,500
25	Dumbarton Corridor Improvements (Newark and Union City)	13,289
Remaining Allocation Total		47,488

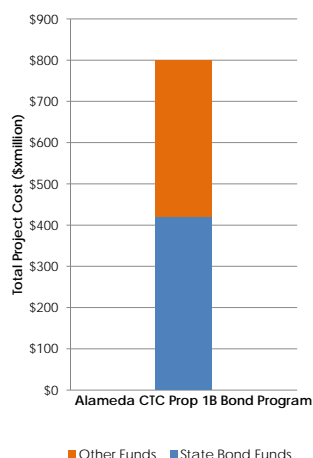


BART Oakland Airport Connector





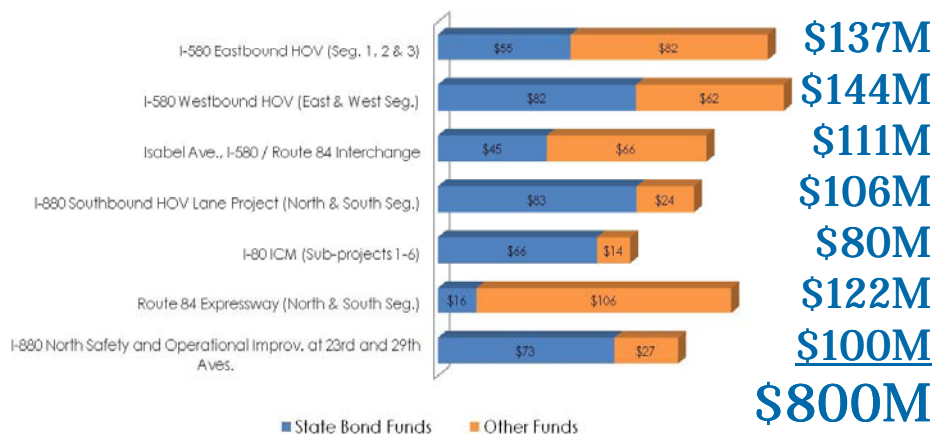
Proposition 1B Bond Projects



- **Alameda CTC attracted and secured \$420 million** of combined CMIA, TLSP and TCIF Prop. 1B Bond Funds
- **All projects in the \$800 million** Prop 1B Bond highway program delivered to construction
- **California Transportation Commission** approved the final allocation of funds in August 2013

Prop 1B Bond Projects - Funding

Prop 1B Bond Funds (\$ x million)











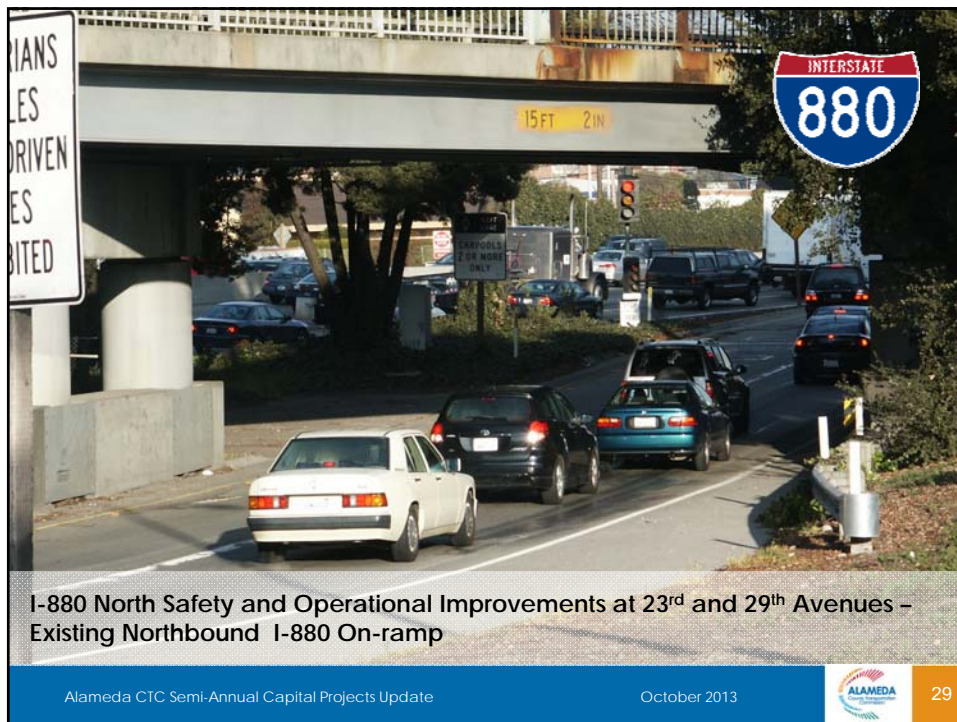
I-580 Westbound HOV – West Segment – Precast Slab Placement

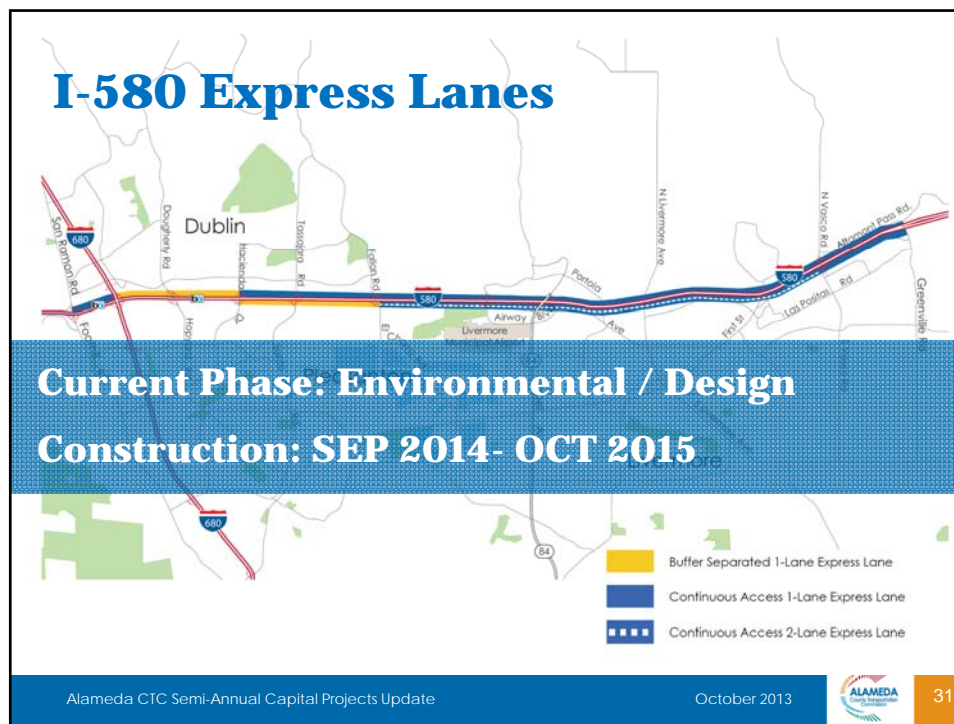
Alameda CTC Semi-Annual Capital Projects Update October 2013  27



Route 84 Expressway – North Segment – New Retaining Wall at Stanley Blvd.

Alameda CTC Semi-Annual Capital Projects Update October 2013  28





Recently Achieved Milestones

- **I-580 San Leandro Landscaping Project** completed May 2013
- **I-880 Mission-Foothill-Jackson Corridor Improvement Project** construction completed July 2013
- **I-880 North Safety and Operational Improvements at 23rd/29th Avenues Project** advertised September 2013
- **Webster Street SMART Corridors Project** completed October 2013
- **East Bay Greenway Project** ribbon cutting ceremony celebrating the start of construction held October 2013

Upcoming Milestones

- **I-880 North Safety and Operational Improvements at 23rd/29th Avenues Project** award and start of construction in early 2014
- **Telegraph Ave Corridor Transit Project** start of construction in early 2014
- **Route 84 Expressway North Segment Project** construction completion in February 2014

Questions –

For specific status, schedule and funding questions, capital project fact sheets can be found on the Alameda CTC webpage at :

http://www.alamedactc.org/app_pages/view/4681

07/11/2013 10:16

This page intentionally left blank