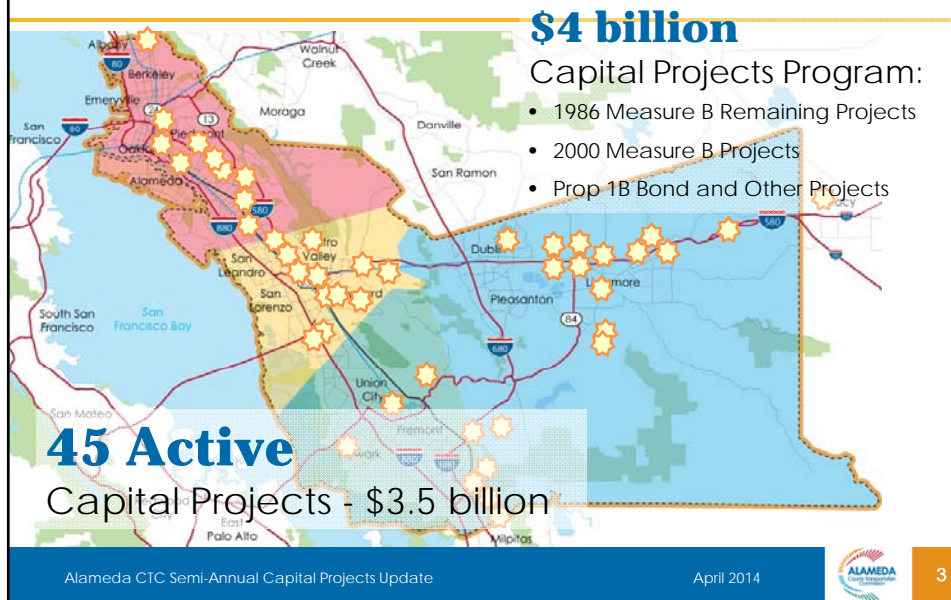




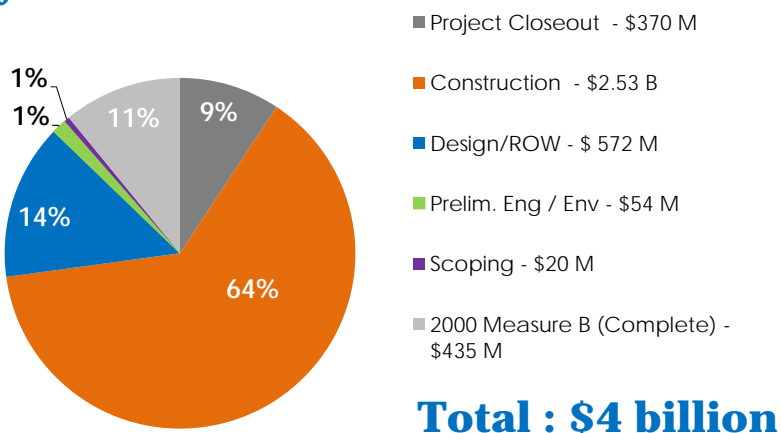
Presentation Overview

- Capital Program Summary
- Status Update by Program
 - 1986 Measure B Projects
 - 2000 Measure B Projects
 - Proposition 1B "I-Bond" and Other Projects
- Project Milestone Highlights

Active Capital Projects Location Map



Overall Capital Projects Program by Phase



84% of projects in construction or complete

Status Update by Program

- 1986 Measure B Projects
- 2000 Measure B Projects
- Prop 1B Bond and Other Projects

1986 Measure B Projects

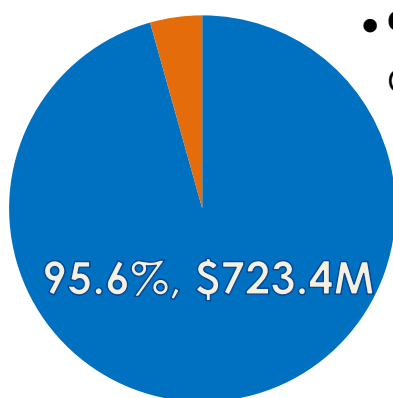
Current Status of the 4 remaining projects:

- **Route/238 Mission-Foothill-Jackson Corridor Improvement Project** currently in the closeout phase
- **I-880/Mission Boulevard (Route 262) Interchange Completion Project** currently in construction with expected completion spring 2015
- **Castro Valley Local Traffic Circulation Improvement Project** is a Study only project which is expected to complete fall 2014
- **I-880 Mission Boulevard East-West Connector Project** is in Final Design and currently on hold due to funding shortfall

I-880 Mission Boulevard East-West Connector Update

- Design on hold pending identification of additional funding
- Project cost estimate is \$225 million
- Available funding \$110 million (incl. \$88.8 million in Measure B)
- Funding shortfall estimated close to \$115
 - *Additional funding anticipated from proceeds from the state-owned right-of-way associated with State Route 84 Historic Parkway via the LATIP (not anticipated to make up current shortfall)*
- Included in 2014 Transportation Expenditure Plan

2000 Measure B Projects



- **95.6% of the program delivered in 12 years:**

- **Capital Project commitment totaling \$756.4 million**
- **\$723.4 million in funding allocated** since the start of the program in 2002

■ 2000 Measure B - Allocated

■ 2000 Measure B - Un-Allocated

Note: Totals as of March 31, 2014

I-880/ Broadway-Jackson Interchange Improvements Update

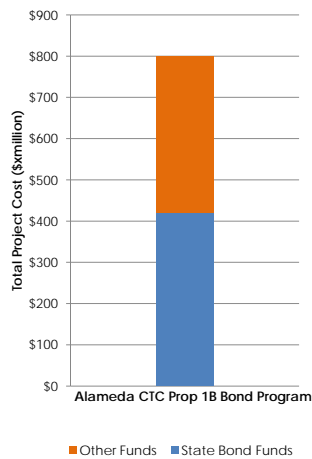
- Alameda CTC approved formation of an ad-hoc Project Advisory Committee (PAC) to guide the project through project development
- Alameda CTC working with PAC, community stakeholders and the Cities of Oakland and Alameda technical staff to build consensus on scope
- Development of Traffic Study Statement of Work currently underway, consultant selection process expected spring 2014. Results of the study to inform the project alternatives
- Next PAC meeting scheduled for May 7, 2014

Dumbarton Rail Corridor Update

- Project placed on hold prior to FTA approval of Environmental Document due to lack of full funding
- Bus service was expanded in the area and the project team worked to identify a solution; funding issue remained
- MTC plans to reallocate remaining RM2 funds
- Alameda CTC commission reallocated the remaining 2000 Measure B funds to the City of Newark's Central Avenue Overpass Project located within the Dumbarton Corridor
- Central Avenue Overpass Project will construct a four lane grade separation structure at the rail-road crossing on Central Ave. in the City of Newark; Environmental Phase underway, construction expected to begin fall 2015



Proposition 1B Bond Projects



- **Alameda CTC attracted and secured \$420 million** of combined CMIA, TLSP and TCIF Prop. 1B Bond Funds
- 100% of bond funds allocated by California Transportation Commission
- **Award of the Construction Contract for the I-880 North Safety and Operational Improvements Project expected in April 2014**





I-880 Southbound HOV – South Segment near Williams Overcrossing

© 2014 California Department of Transportation, all rights reserved.

Alameda CTC Semi-Annual Capital Projects Update April 2014

ALAMEDA COUNTY

15



Construction Start: NOV 2012
Construction End: NOV 2014

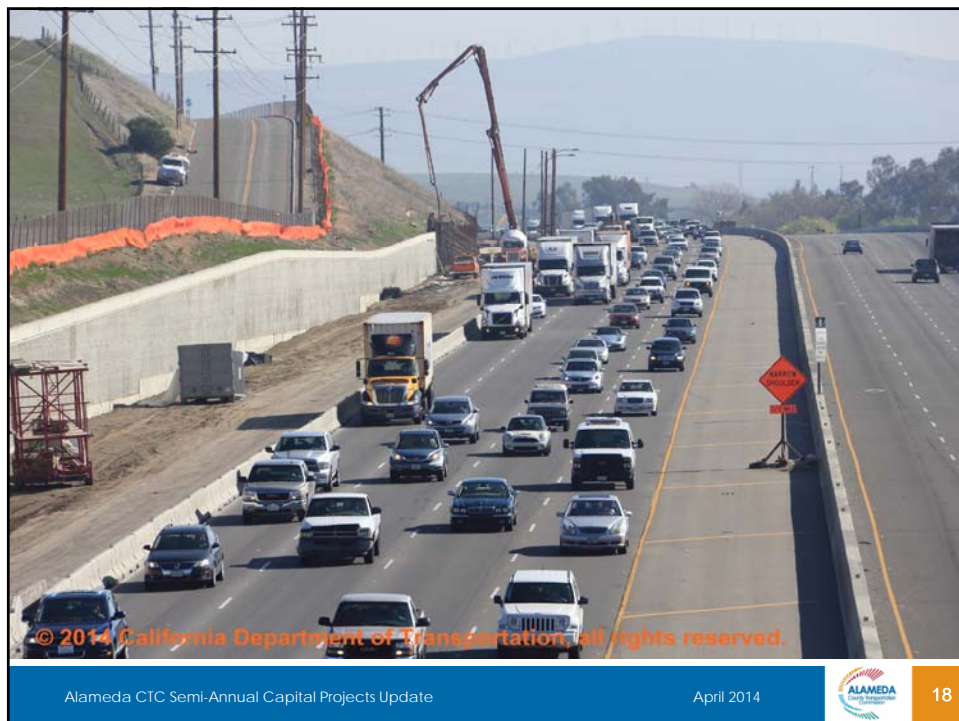
07 15 2013

I-580 Eastbound HOV – Segment 3 AUX Lanes

Alameda CTC Semi-Annual Capital Projects Update April 2014


ALAMEDA COUNTY

16





Contract Award: APR 2014
Construction End: JUN 2018



I-880 North Safety and Operational Improvements at 23rd and 29th Avenues – Existing Northbound I-880 On-ramp

Alameda CTC Semi-Annual Capital Projects Update April 2014

ALAMEDA County Transportation Center

21

Other Projects

Install Video Detection Camera at Central /Webster Ave.



Traffic Cameras & Subscriber at Central Ave

Webster Street SMART Corridors Project – Completed February 2014

Alameda CTC Semi-Annual Capital Projects Update April 2014

ALAMEDA County Transportation Center

22

Recently Achieved Milestones

- **BART Oakland Airport Connector Project** new vehicles unveiled and system testing began January 2014
- **Webster Street SMART Corridors Project** completed February 2014
- **I-880 North Safety and Operational Improvements at 23rd/29th Avenues Project** bid opening March 18, 2014
- **I-580 Express Lanes Project** environmental clearance achieved March 2014
- **I-880 Southbound HOV Project** - Traffic switch onto new Marina Overcrossing on April 10, 2014

Upcoming Milestones

- **I-880 North Safety and Operational Improvements at 23rd/29th Avenues Project**
award of the construction contract expected April 2014
- **Route 84 Expressway North Segment Project**
Construction completion in May 2014
- **East Bay Greenway Segment 7A**
Construction completion June 2014



Questions –

For specific status, schedule and funding questions, capital project fact sheets can be found on the Alameda CTC webpage at :

http://www.alamedactc.org/app_pages/view/4681

07/11/2013 10:16

Alameda CTC Semi-Annual Capital Projects Update

April 2014

 25