
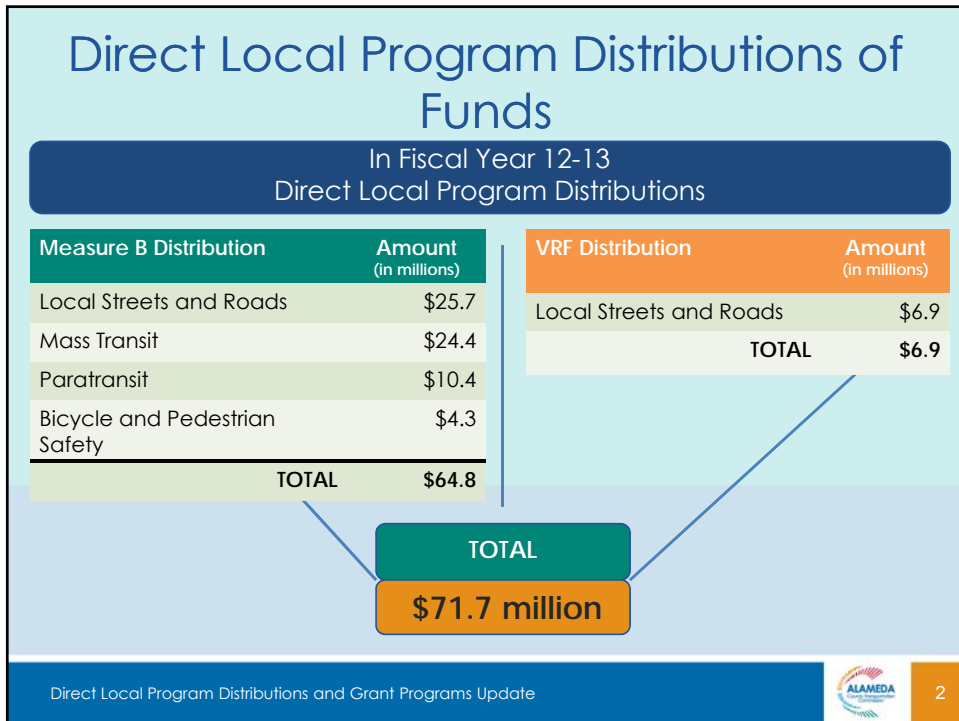


## Semi-Annual Programs Status Update on Direct Local Program Distributions and Grant Programs

A Presentation by  
Alameda County Transportation Commission Staff  
October 2013

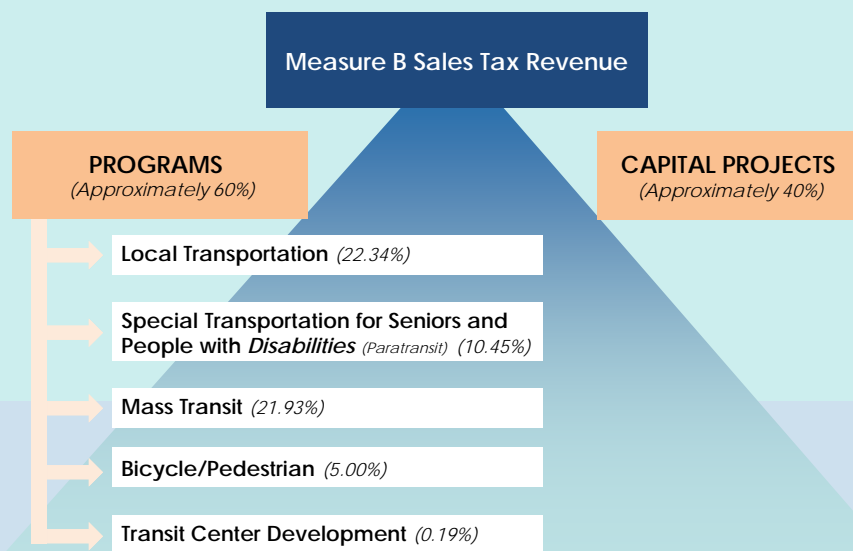



## A Brief History: Measure B

- Measure B half-cent sales tax approved by voters in 1986
- Alameda County was one of the first California Self-Help Counties
  - Self-help Counties generate approximately \$4 billion per year for California transportation and mobility
- In 2000: Measure B was reauthorized with 81.5% voter approval rate
- In 2002: Tax collection and program allocations began
- In 2004: Grant allocations began



## Measure B Distributions



## Measure B-Funded Programs

### Direct Local Program Distributions

- Allocates funds to 20 jurisdictions
- Funds four types of programs
  - *Local Transportation (Local Streets and Roads)*
  - *Mass Transit*
  - *Special Transportation for Seniors & People with Disabilities (Paratransit)*
  - *Bicycle and Pedestrian Safety*
- In FY 12-13 Alameda CTC distributed \$64.8 million in pass-through funds
- Alameda CTC projects \$64.2 million in pass-through distributions for FY 13-14

### Grant Programs

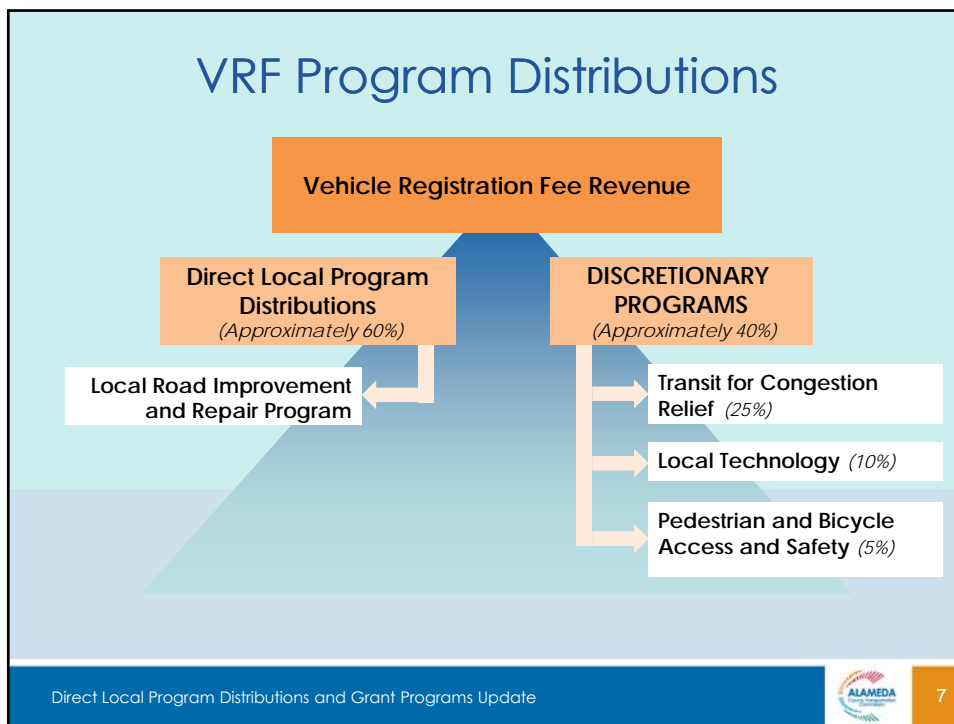
- Funds four types of programs
  - *Bicycle and Pedestrian Safety*
  - *Paratransit*
  - *Express Bus*
  - *Transit Center Development*
- Since 2004, approximately 140 projects have been awarded Measure B funding in the amount of approximately \$38.0 million
  - *Projects funded through the Coordinated Funding Program and Paratransit Gap Cycle 5 Program are underway and funded through FY 14/15*



## A Brief History: Vehicle Registration Fee

- Voters approved Measure (F) and the Vehicle Registration Fee (VRF) in November, 2010
- Collection of the annual \$10 per vehicle fee started with registrations due in May, 2011
- First VRF funds distributed in Spring 2012 as Local Road Improvement and Repair pass-through funds





## Vehicle Registration Fee Programs

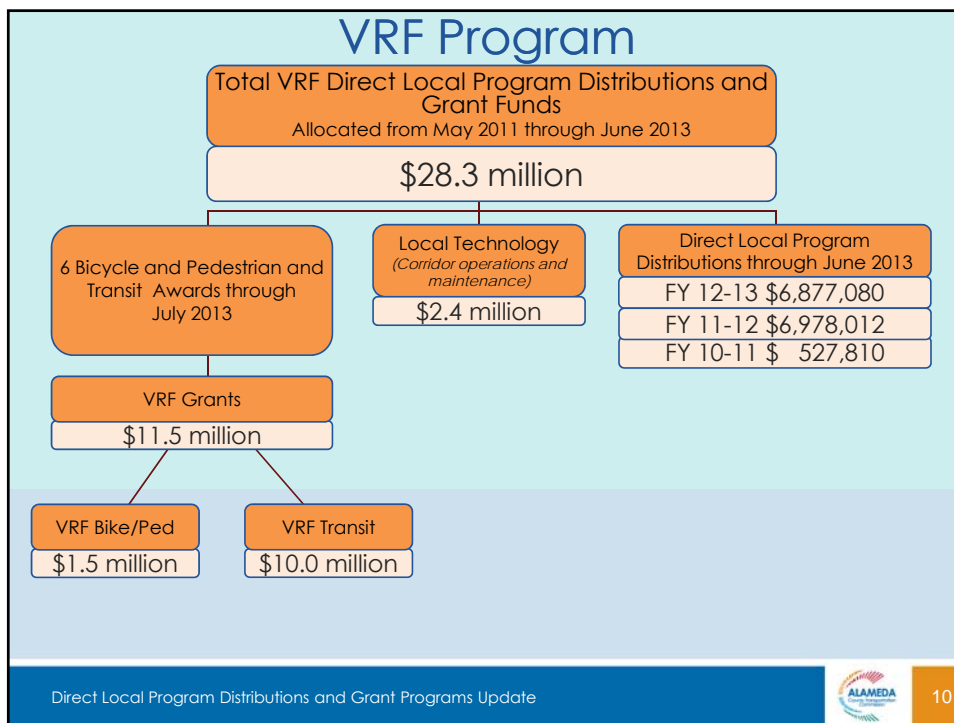
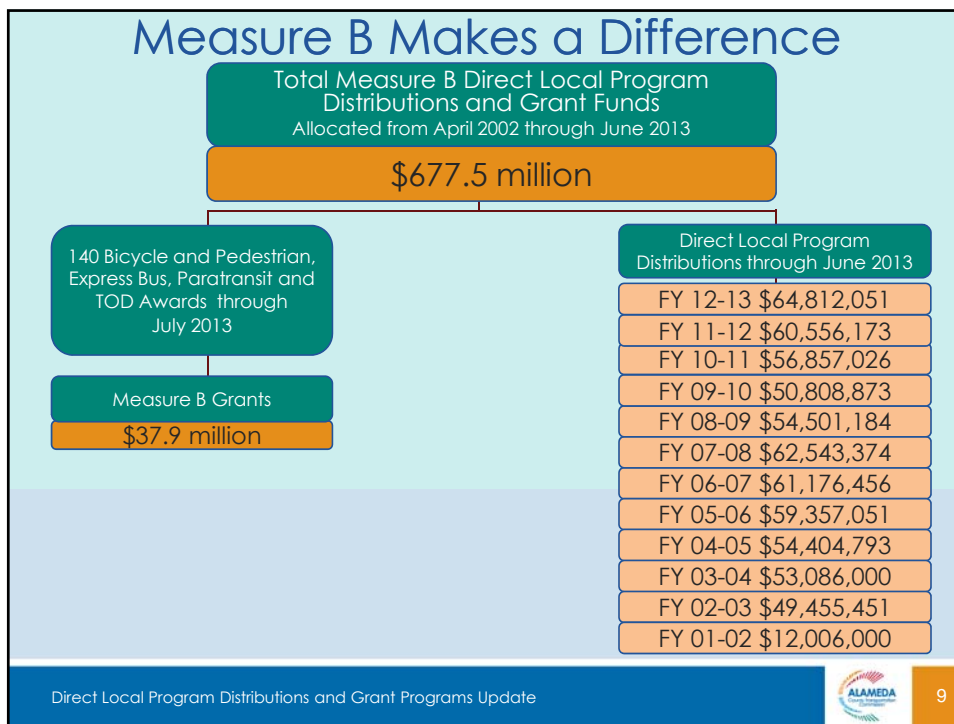
### Direct Local Program Distributions

- Allocates funds to 15 jurisdictions
- Funds one program
  - Local Road Improvement and Repair Program*
- In FY 12-13 Alameda CTC distributed \$6.9 million in Direct Local Program Distributions
- Alameda CTC projects \$6.6 million in pass-through distributions for FY 13-14

### Grant Programs

- Funds three types of programs
  - Bicycle and Pedestrian Safety*
  - Transit for Congestion Relief*
  - Local Transportation Technology*
- In July 2013, Commission approved first projects for VRF Bike/Pedestrian and Transit funds as part of the Coordinated Funding Program
- Local Transportation Technology funds ongoing Alameda CTC operations, maintenance, and project such as the "Smart Corridors Program"

Direct Local Program Distributions and Grant Programs Update ALAMEDA 8



## Compliance Reporting Requirements for Direct Local Program Distributions

- Road miles served
- Population
- Complete Streets Policy by June 2013
- Article in Recipient's or Alameda CTC's newsletter
- Website coverage of the project
- Signage about Measure B/VRF funding
- End-of-year Audited Financial Statement (due in December 2013)
- End-of-year Compliance Report (due in December 2013)
- Implementation plans for fund balances

## Measure B/VRF Grant Program Overview

- Measure B and VRF contain competitive programs for projects that:
  - Improve transportation access for the diverse population in Alameda County
  - Provide improvements that encourage Alameda County residents to walk, bike, take public transportation and live in transit oriented developments



## Bicycle and Pedestrian Grant Program

- Updates to Countywide Pedestrian and Bicycle Plans
- City and County bicycle and pedestrian plans
- Gap closures
- Education and safety programs
- Capital projects



## City of Emeryville Christie Avenue Bay Trail Gap Closure Project

- Funded under the VRF Pedestrian and Bicycle Access and Safety Program
- Project provides a gap closure of the Bay Trail in central Emeryville from Powell Street and Christie Avenue.
- Improve safety and anticipated future demand created by the opening of the pedestrian-bicycle path across the Bay Bridge



## Express Bus Service Grant Program

- Expansion and enhancement of transit operations
- Express bus services
  - Dynamic message signage
  - Real-time information systems
  - Accessibility improvements



## Livermore Amador Valley Transportation Authority (LAVTA) Express Bus Operating Assistance

- Measure B supports the operation of LAVTA's only WHEELS Express Bus Service Routes:
  - Route 20X - Service between Pleasanton and Livermore
  - Route 70X - Service between Dublin and Walnut Creek
  - Route 12V - Service between Hacienda Road/I-580 and Airway Blvd/I-580
- Project increases transit connectivity to BART stations, transit centers, and local transit services
- Project expands and enhances express bus services countywide





## Paratransit Gap Grant Programs

- Largest paratransit allocation of any Bay Area sales tax measure
- Funding supports approximately one million rides annually
- Supports the Wheelchair and Scooter Breakdown Transportation Service
- Supports the Hospital Discharge Service
- Supports Americans with Disabilities Act (ADA) paratransit programs and city based programs



## City of Fremont Travel Training Program

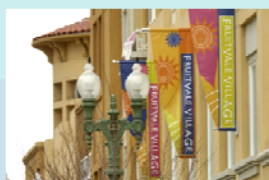
- Individualized transportation planning assistance and community outreach
- Supports seniors and people with disabilities in the Cities of Newark, Union City, and Fremont
- Fosters independent transportation across Alameda County



## Transit Center Development Grant Program

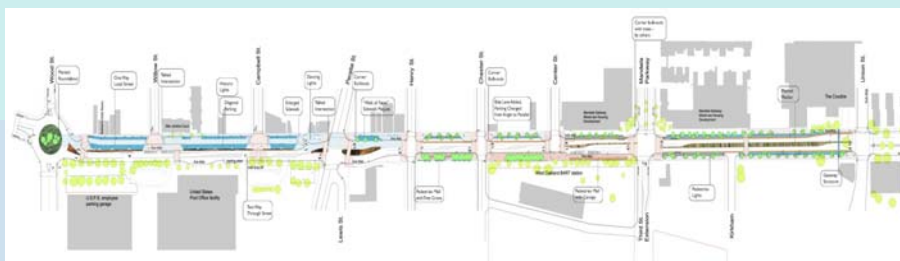


- Focus on residential and retail development near transit centers
- Mode shift away from cars to encourage walking, biking, and using public transportation
- Accessibility improvements



## City of Oakland West Oakland Seventh Street Transit Village Streetscape Project

- Improves bicycle and pedestrian access to the West Oakland BART Station
- Area beautification
- Enhances sense of community and transit oriented transportation



## Measure B Local Streets and Roads Program (Local Transportation) Fund Balance

Jurisdiction	FY 12-13 Ending Fund Balances				
	FY 11-12 Ending Balance	FY 12-13 Estimated Revenue	FY 12-13 Available Revenue	FY 12-13 Anticipated Expenditures	FY 12-13 Anticipated Ending Balance
Alameda County	\$ 2,279,991	\$ 2,437,405	\$ 4,717,396	\$ 3,314,631	\$ 1,402,765
City of Alameda	\$ 3,595,357	\$ 1,535,302	\$ 5,130,659	\$ 2,686,019	\$ 2,444,640
City of Albany	\$ -	\$ 368,779	\$ 368,779	\$ 368,779	\$ -
City of Berkeley	\$ 1,890,611	\$ 2,567,952	\$ 4,458,563	\$ 4,038,462	\$ 420,101
City of Dublin	\$ 843,851	\$ 355,891	\$ 1,199,742	\$ 1,199,742	\$ -
City of Emeryville	\$ 299,292	\$ 229,355	\$ 528,647	\$ 528,647	\$ -
City of Fremont	\$ 2,425,662	\$ 1,984,345	\$ 4,410,007	\$ 3,200,601	\$ 1,209,406
City of Hayward	\$ 812,042	\$ 1,938,174	\$ 2,750,216	\$ 2,217,000	\$ 533,216
City of Livermore	\$ 1,101,756	\$ 870,734	\$ 1,972,490	\$ 1,154,100	\$ 818,390
City of Newark	\$ 395,385	\$ 402,162	\$ 797,547	\$ 797,547	\$ -
City of Oakland	\$ 7,359,967	\$ 9,153,477	\$ 16,513,444	\$ 11,407,000	\$ 5,106,444
City of Piedmont	\$ 288,307	\$ 370,793	\$ 659,100	\$ 207,340	\$ 451,760
City of Pleasanton	\$ 1,129,416	\$ 688,018	\$ 1,817,434	\$ 1,382,434	\$ 435,000
City of San Leandro	\$ 1,887,609	\$ 1,203,624	\$ 3,091,233	\$ 930,459	\$ 2,160,774
City of Union City	\$ 1,295,284	\$ 630,536	\$ 1,925,820	\$ 1,044,339	\$ 881,481
<b>Total</b>	<b>\$ 25,604,530</b>	<b>\$ 24,736,547</b>	<b>\$ 50,341,077</b>	<b>\$ 34,477,100</b>	<b>\$ 15,863,977</b>

From the ending balances of FY 11-12 to FY 12-13, the \$9.7 million difference indicates an overall decline in fund balances.

*Note: Anticipated expenditures based on implementation plans in the last year Compliance Reports. Will be confirming in the next Compliance Reports due in December 2013*



## Vehicle Registration Fee Local Road Improvement and Repair Program Fund Balance

Jurisdiction	FY 12-13 Ending Fund Balances				
	FY 11-12 Ending Balance	FY 12-13 Estimated Revenue	FY 12-13 Available Revenue	FY 12-13 Anticipated Expenditures	FY 12-13 Anticipated Ending Balance
Alameda County	\$ 683,580	\$ 695,634	\$ 1,379,214	\$ 199,486	\$ 1,179,728
City of Alameda	\$ 331,303	\$ 337,447	\$ 668,750	\$ -	\$ 668,750
City of Albany	\$ 74,674	\$ 70,811	\$ 145,485	\$ 145,485	\$ -
City of Berkeley	\$ 474,334	\$ 449,798	\$ 924,132	\$ 102,500	\$ 821,632
City of Dublin	\$ 250,727	\$ 237,287	\$ 488,014	\$ 488,014	\$ -
City of Emeryville	\$ 44,867	\$ 45,765	\$ 90,632	\$ 90,632	\$ -
City of Fremont	\$ 1,067,554	\$ 1,088,048	\$ 2,155,602	\$ 544,024	\$ 1,611,578
City of Hayward	\$ 731,460	\$ 742,264	\$ 1,473,724	\$ 1,049,000	\$ 424,724
City of Livermore	\$ 437,264	\$ 446,009	\$ 883,273	\$ 345,400	\$ 537,873
City of Newark	\$ 217,184	\$ 221,373	\$ 438,557	\$ 40,000	\$ 398,557
City of Oakland	\$ 1,891,353	\$ 1,791,663	\$ 3,683,016	\$ 1,000,000	\$ 2,683,016
City of Piedmont	\$ 49,408	\$ 46,852	\$ 96,260	\$ -	\$ 96,260
City of Pleasanton	\$ 362,934	\$ 343,680	\$ 706,614	\$ 706,614	\$ -
City of San Leandro	\$ 425,278	\$ 433,784	\$ 859,062	\$ -	\$ 859,062
City of Union City	\$ 367,037	\$ 374,378	\$ 741,415	\$ 258,707	\$ 482,708
<b>Total</b>	<b>\$ 7,408,957</b>	<b>\$ 7,324,793</b>	<b>\$ 14,733,750</b>	<b>\$ 4,969,862</b>	<b>\$ 9,763,888</b>

*Note: Anticipated expenditures based on implementation plans in the last year Compliance Reports. Will be confirming in the next Compliance Reports due in December 2013*



## Future Tasks

Implement the Master Programs Fund Agreement Requirements, including

- Confirm Complete Streets Resolutions adopted
- Reserve Policy
  - FY 11/12 - Year 1 included identifying Reserve Projects and financial commitments
  - FY 12/13 - Year 2 of the policy implementation will include tracking identified projects and commitments
- Incorporate Measure B and VRF programs into the Strategic Planning and Programming Policy effort, including a Capital Improvement Program and Programs Investment Program