

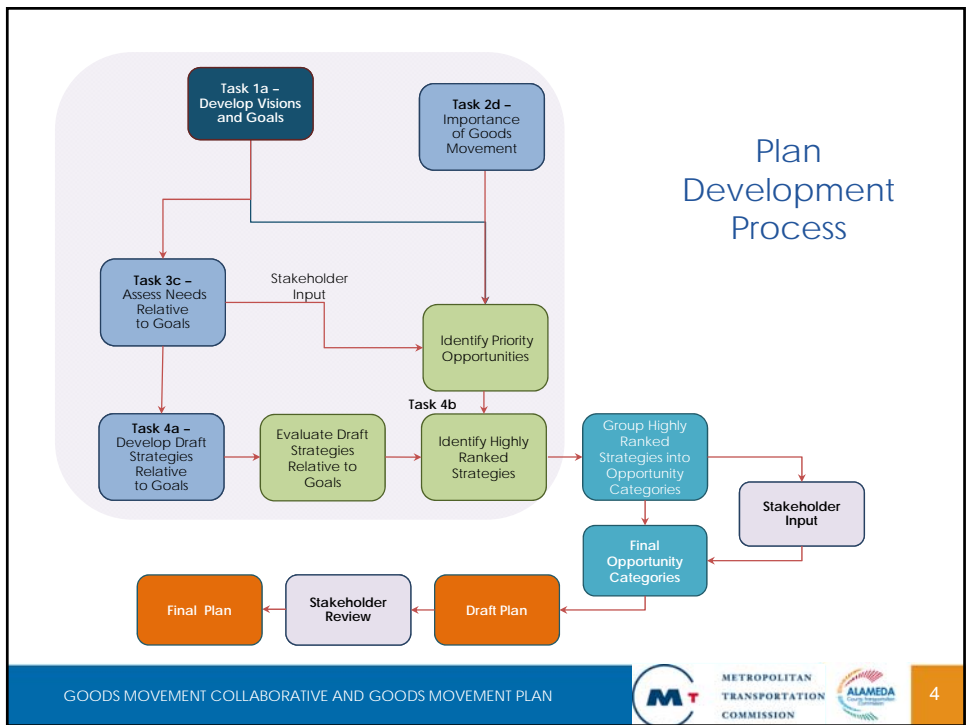
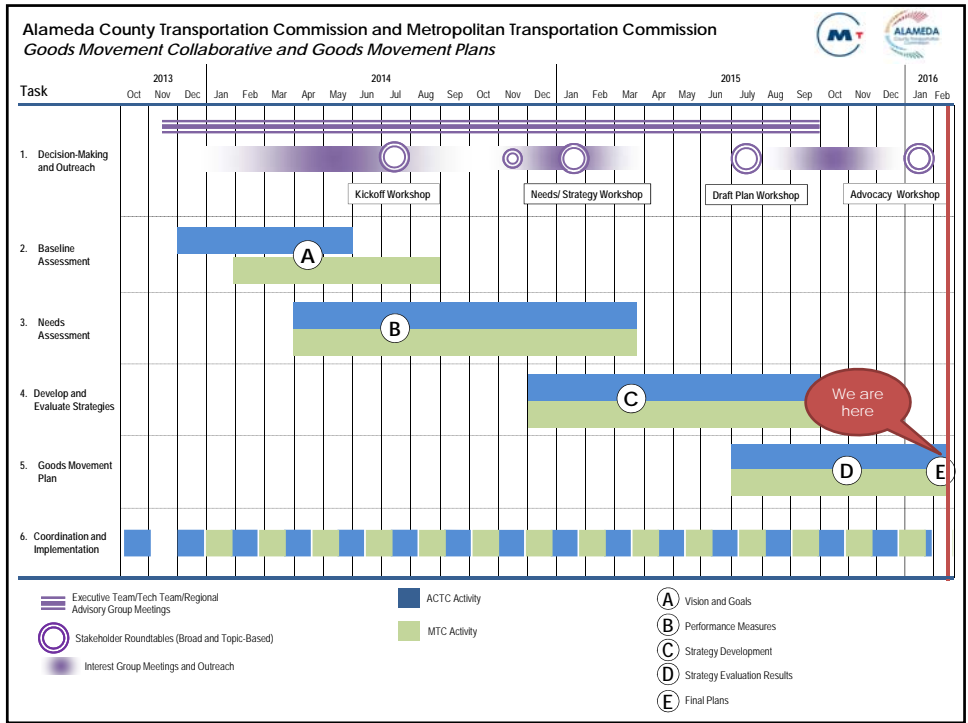
**Goods Movement Collaborative
and Goods Movement Plan
Final Plan**




Alameda County Transportation Commission Meeting
February 25, 2016

Agenda

- Recap of Plan Development Process
- Review of Opportunity Categories – The Core of the Plan
- Responses to Comments and Summary of Changes
- Next Steps – Moving the Plan Forward
- Recommendation



Extensive Stakeholder Engagement Process

Over 60 stakeholder meetings throughout project

Interest Groups

- 3 rounds of meetings
- Included business, labor, public health, environment, shippers, carriers, & regulatory agencies
- Presence at 5 transportation open houses around County

Technical Team

- Comprised of local agency staff
- 8 meetings throughout project
- Review of technical materials
- Community and public health groups participated in meetings

Roundtables

- All interest groups attended
- Generally 60+ participants
- 5 held throughout project
- One held in West Oakland

Executive Team

- Provides strategic guidance; ensures buy-in for implementation
- MTC, Caltrans D4, BAAQMD, Port of Oakland, East Bay EDA, CMAs
- 6 meetings throughout project

Opportunity Categories – Review



OPPORTUNITY CATEGORY 1:

Sustainable Global Competitiveness



OPPORTUNITY CATEGORY 2:

Smart Operations and Deliveries



OPPORTUNITY CATEGORY 3:

Modernize Infrastructure

Comments on Draft Plan

1. More analysis of public health impacts and how Opportunity Categories address health impacts
2. Clearer strategy for implementing and funding impact reduction measures and additional strategies suggested
3. Specific local hiring targets and workforce development requirements
4. Requested changes to project ratings in strategy evaluations
5. Requested projects at I-580/I-680 interchange, high capacity transit, and “cash for clunkers”
6. Greater emphasis on role of Alameda County in Bay Area and mega-region

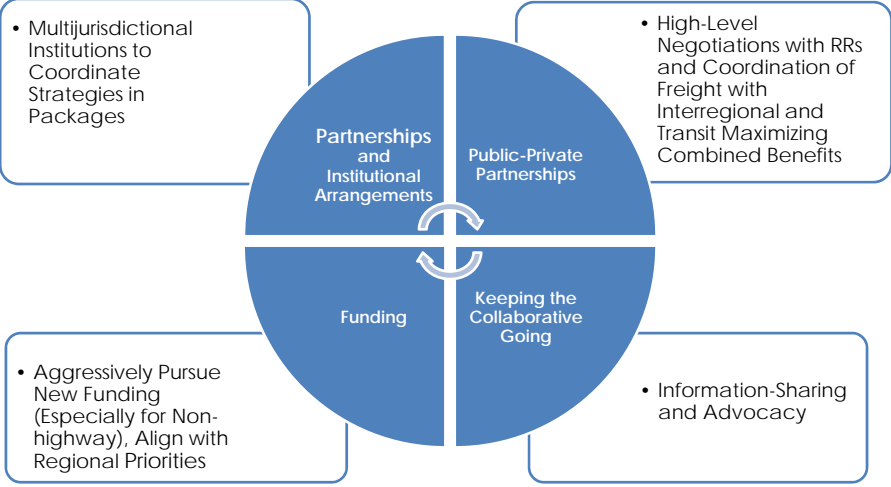


Addressing Public Health Impacts

- DDDC Health Impact Assessment of Plan –Review Draft Released at PPLC Meeting
 - *Assessment of selected strategies but not the entire Plan*
 - *Alameda County Public Health Department assisted with Existing Conditions Analysis*
- Plan calls for continued collaboration among Alameda CTC, MTC, BAAQMD, ACPHD, and communities to improve understanding of public health impacts
 - *Initial meeting of agencies on February 11 – agreed to meet again*
 - *Initial priority is improving data/methods to develop details of impact reduction measures in Plan and apply for funds*



Moving Forward



Partnership Example – Chicago Regional Environmental and Transportation Efficiency Program (CREATE)

Public-Private Collaboration

Investing \$billions to Address Regional Rail Deficiencies

70 Coordinated Projects; 25 Completed as of 2015

Improving Transportation, Air Quality, Safety, and Economy



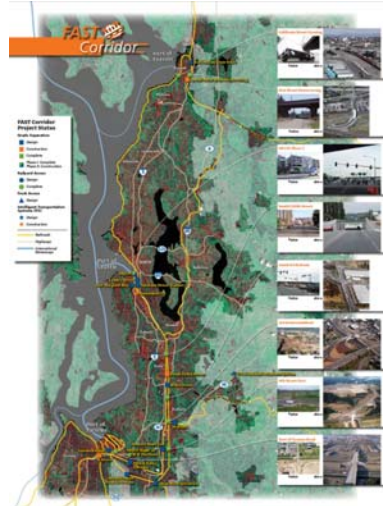
Graphic Source: Consultant Team

Partnership Example – The FAST Corridor – Puget Sound Region

26 organizations – Cities, Counties, Ports, MPO, State DOT, Railroads

MOU –

- Initial project list and process for adding projects
- Participant implementation responsibilities
- General formula for cost-sharing



Graphic Source:
<http://www.psrc.org/assets/1835/brochuremap2.jpg>

State Funding Opportunities

Cap and Trade

- Low Carbon Transportation Investments and Air Quality Improvement Program
- 40% Uncommitted Funds
- Disadvantaged Community Requirements

Sustainable Freight Action Plan

- Pilot Projects

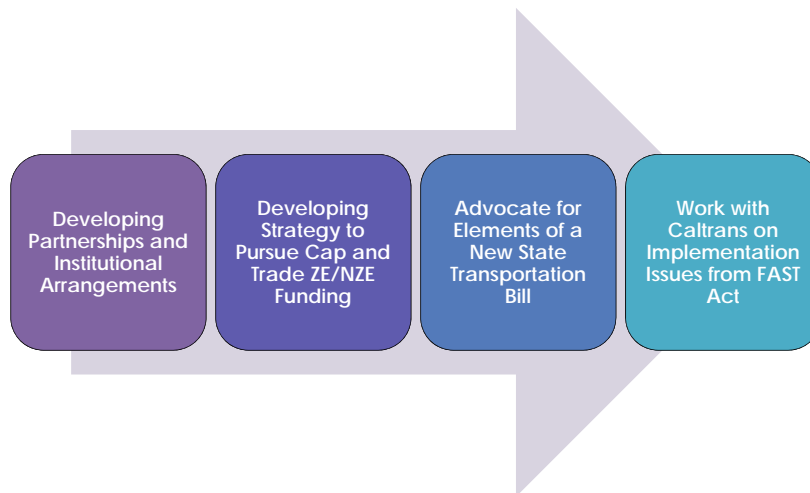
New Transportation Bill

- Potential for new TCIF funding

Federal FAST Act

- Nationally Significant Freight and Highway Projects Program
 - *\$4.5 billion over 5 years for highway and multi-modal projects*
 - *National Freight Network, NHS, and Interstates*
- National Highway Freight Program
 - *\$6.3 billion over 5 years apportioned to states – CA share - \$582.5 million over 5 years*
 - *Fund projects on National Freight Highway Network, Critical Urban and Rural Corridors, Interstate System*
 - *10% set-aside for port and rail projects*

Immediate Next Steps for a Collaboration



Recommendation

Approve Final Alameda Countywide Goods Movement Plan



Thank You

