

## Presentation Overview

### Alameda CTC Prop. 1B Bond Program Overview:

- Program Delivery Overview and Update
- Cost/Funding
- Construction Schedule
- Projects Location Map
- Construction Photographs

## Program Delivery Overview and Update

- **November 2006:** Prop. 1B Bond funds approved by the voters
- **January 2007:** MTC's final recommendation to CTC included \$1.9 billion in projects for the Bay Area
- **February 2007:** Seven of the ten Alameda County projects from MTC's final recommendation were selected by the CTC for Prop. 1B Bond funding
- **August 2013:** CTC approved \$73.4 million in TCIF funding for the final project in the program; I-880 North Safety and Operational Improvements at 23<sup>rd</sup> and 29<sup>th</sup>
- To date, Alameda CTC has successfully secured **\$420 million** in Prop. 1B Bond funding towards the delivery of an **\$800 million** highway program

## Prop 1B Bond Projects Cost/Funding

Prop 1B Highway Bond Program (\$ x million)			
Project Description	Total Project Cost	Total Bond Funds	Bond Type
1. I-580 Eastbound HOV Lane (Segments 1, 2 & 3 – AUX Lanes)	\$137.2	\$55.2	CMIA
2. I-580 Westbound HOV Lane (East & West Segments)	\$143.9	\$82.4	CMIA
3. Isabel Ave., I-580 / Route 84 Interchange	\$111.7	\$45.3	CMIA
4. I-880 Southbound HOV Lane (North & South Segments)	\$106.5	\$82.6	CMIA
5. I-80 ICM (Sub-projects 1-6)	\$80.0	\$66.2	CMIA, TLSP
6. Route 84 Expressway (North & South Segments)	\$122.0	\$16.1	CMIA
7. I-880 North Safety and Operational Improvements at 23 <sup>rd</sup> /29 <sup>th</sup> Avenues	\$99.9	\$73.4	TCIF
<b>Total:</b>	<b>\$801.2</b>	<b>\$421.2*</b>	

\* Total reflects bid savings to date

## Prop 1B Bond Projects Schedule

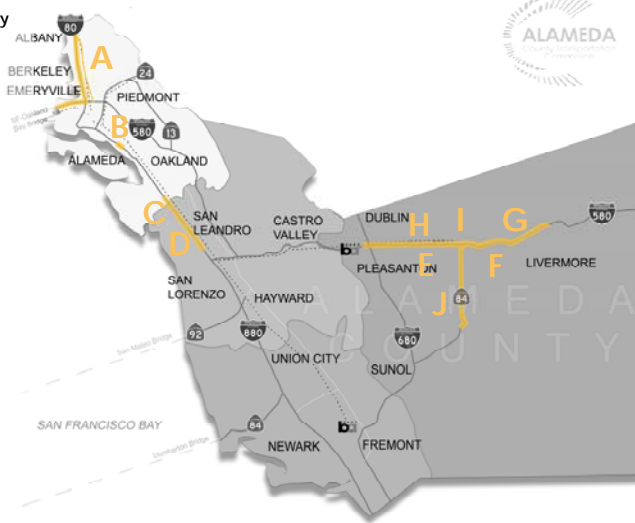
Project	Begin Construction (See Note)	End Construction (See Note)
1 I-580 Eastbound HOV Segment 1&2	Projects Complete	
I-580 Eastbound HOV Segment 3 with AUX Lane	NOV 2012 (A)	NOV 2014 (T)
2 I-580 Westbound HOV – East Segment	NOV 2012 (A)	NOV 2014 (T)
I-580 Westbound HOV – West Segment	OCT 2012 (A)	NOV 2014 (T)
3 Isabel Ave., I-580 / Route 84 Interchange	Project Complete	
4 I-880 Southbound HOV – North Segment	NOV 2012 (A)	JUL 2015 (T)
I-880 Southbound HOV – South Segment	SEP 2012 (A)	MAY 2015 (T)
5 I-80 Integrated Corridor Mobility (ICM)	JUN 2011 (A)	DEC 2014 (T)
6 Route 84 Expressway – North Segment	MAR 2012 (A)	FEB 2014 (T)
7 I-880 Operational Improvements at 23 <sup>rd</sup> /29 <sup>th</sup> Avenues	DEC 2013 (T)	DEC 2017 (T)

Note: (A)=Actual (T)=Target Construction start dates contingent upon winter weather conditions




## Prop 1B Highway Program Projects Location Map

- A I-80 Integrated Corridor Mobility (CMIA, TLSP)
- B I-880 North Safety Operational Improvements (TCIF)
- C I-880 Southbound HOV Lane – North Segment (CMIA)
- D I-880 Southbound HOV Lane – South Segment (CMIA)
- E I-580 Eastbound HOV Lane – Segments 1 & 2 [Complete]
- F I-580 Eastbound HOV Lane – Segments 3 [AUX] (CMIA)
- G I-580 Westbound HOV Lane – East Segment (CMIA)
- H I-580 Westbound HOV Lane – West Segment (CMIA)
- I I-580 / Isabel Ave. (Route 84) Interchange [Complete]
- J Route 84 Expressway – North Segment (CMIA)



### Construction Photographs



I-580 Eastbound HOV – Segment 3 AUX Lanes – Bridge Falsework

Prop. 1B Bond Program Update September 2013



7



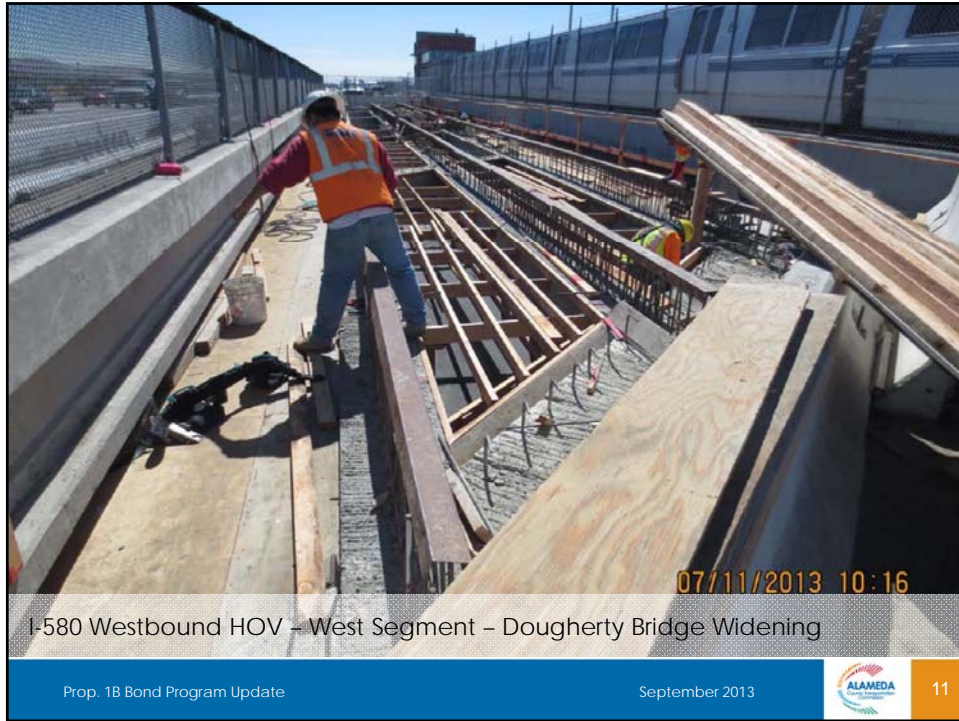
I-580 Eastbound HOV – Segment 3 AUX Lanes – Box Culvert at Arroyo Seco

Prop. 1B Bond Program Update September 2013



8







*This page intentionally left blank.*