


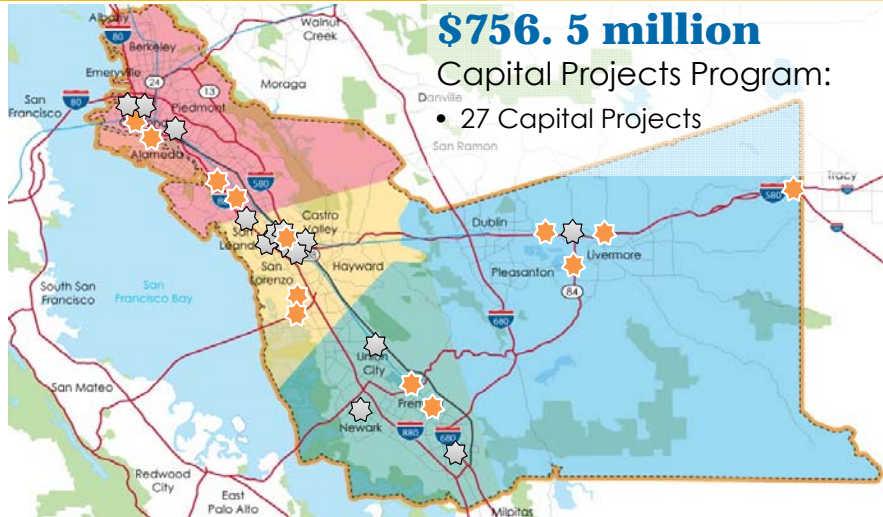
**2000 Measure B  
Semi-Annual  
Capital Projects Update**

A Presentation for the Citizens Watchdog Committee  
January 2014




## 2000 Measure B Program

**\$756.5 million**  
Capital Projects Program:  
• 27 Capital Projects



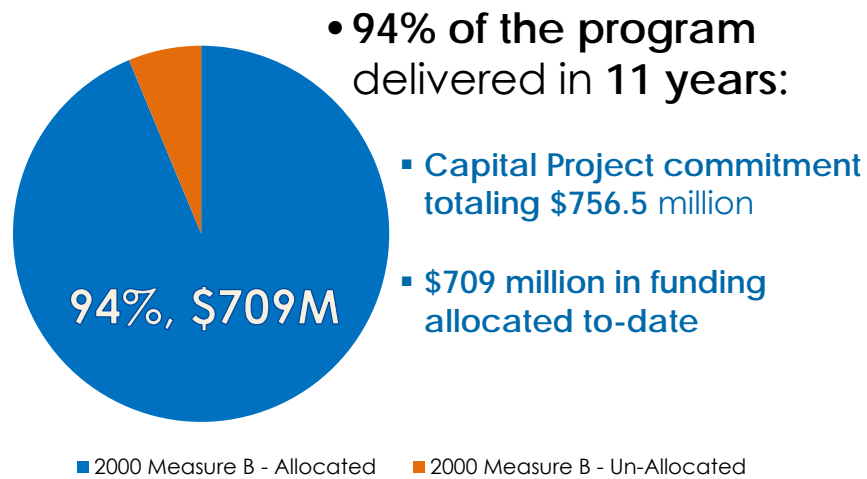
2000 Measure B Semi-Annual Capital Projects Update  
Citizen's Watchdog Committee

January 2014



2

## 2000 Measure B Program Status



## 2000 Measure B Completed Projects

### Completed Projects totaling \$435 million:

- Fruitvale Transit Village (Mar 2004)
- Union City Intermodal Station (Mar 2012)
- San Pablo/Telegraph Ave. Corridor Transit Improvements (Dec 2009)
- I-680 SB Sunol Express Lane Improvements (Apr 2012)
- I-880/Washington Ave. Interchange Improvement (May 2010)
- I-580/Castro Valley Interchange Improvements (Jun 2011)
- Lewelling/East Lewelling Blvd. Widening (Oct 2012)
- I-580 EB Auxiliary Lane -El Charro Road to Airway Blvd. (Nov 2011)
- Oakland Local Streets Rehabilitation (Dec 2006)

## 2000 Measure B Completed Projects (cont.)

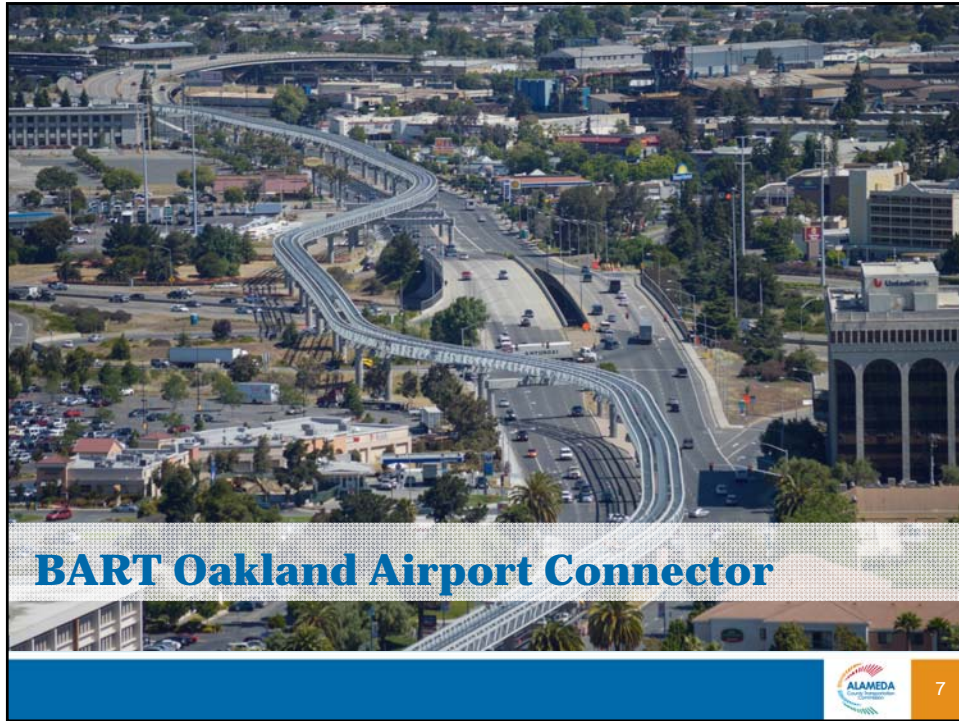
- Hesperia/Lewelling Blvd. Intersection Improvements (Oct 2012)
- Westgate Parkway Extension (Oct 2006)
- Newark Local Streets Rehabilitation (Feb 2006)
- I-238 Widening (Oct 2009)
- Isabel Avenue – Route 84/1-580 Interchange (Mar 2012)
- Vasco Road Safety Improvements (Jun 2009)

## 2000 Measure B Active Projects

### In Construction:

- Altamont Commuter Express Rail
- BART Warm Springs Extension
- BART Oakland Airport Connector
- Downtown Oakland Streetscape Improvement
- I-580 Auxiliary Lanes
- Route 84 Expressway – North Segment
- Emerging Projects: I-880 Corridor Projects

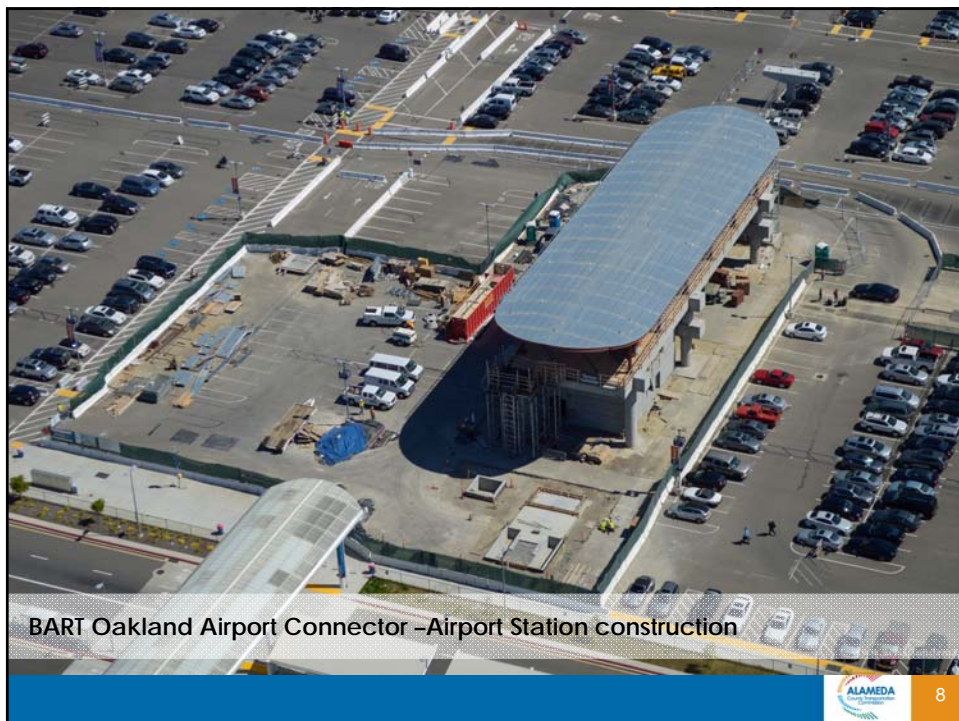




## BART Oakland Airport Connector



7



## BART Oakland Airport Connector - Airport Station construction



8







## 2000 Measure B Active Projects (cont.)

### In Project Development:

- Telegraph Ave Corridor Transit Project
- I-680 NB Sunol Express Lanes (Env. Only)
- Iron Horse Transit Route
- I-880 Broadway-Jackson Interchange Improvements
- Route 92 Clawiter – Whitesell Interchange and Reliever Route
- East 14<sup>th</sup>/Hesperian Blvd/150<sup>th</sup> Street Intersection Improvement
- Route 84 Expressway – South Segment
- Dumbarton Rail Corridor Improvements
- I-580 BART to Livermore Studies

## Remaining Project Commitments

### 2000 MEASURE B

Project No.	Project Title	Remaining Commitments (\$ x 1,000)
01	ACE Capital Improvements	2,000
08A	I-680 Express Lane - Southbound	4,500
08B	I-680 Express Lane - Northbound	5,500
09	Iron Horse Transit Route	6,267
15	I-880/Route 92/Whitesell Drive Interchange	14,432
23	Isabel Avenue – Route 84/I-580 Interchange	1,500
25	Dumbarton Corridor Improvements (Newark and Union City)	13,289
<b>Remaining Allocation Total</b>		<b>47,488</b>

## Dumbarton Corridor Project Update

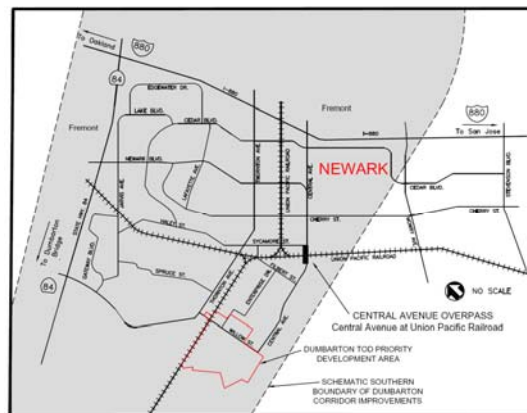
- Environmental Document is ready
- Significant funding shortfall identified
  - *\$806 million total project cost estimate*
  - *RM2 and Measure B funding remaining*
- FTA will not approve Environmental Document without viable funding
- Project put on hold by PAC and SamTrans

## Dumbarton Corridor Project Update (cont.)

- MTC to reallocate remaining \$34.6 million by March 2014
- 2000 MB No. 25:
  - *Total MB Commitment of \$19.4 million*
  - *\$6.1 million Previously Allocated*
    - \$2.8 M Allocation to Newark Central Ave. Overpass Project
    - \$3.3 M Allocation to Dumbarton Rail Project Studies
  - *\$13.3 million Remaining Allocation is committed to Newark Central Ave. Overpass Project*

## Newark Central Avenue Overpass Project

- Construct a four-lane bridge overpass, including sidewalks and bicycle lanes, at the existing railroad crossing on Central Avenue between Sycamore Street and Morton Avenue





## Newark Central Avenue Overpass Project

- **Benefits:**

- *Traffic congestion relief within the Dumbarton Corridor*
- *Enhanced safety for vehicles, bicycles and pedestrians*
- *Improved emergency response times*
- *Elimination of the potential for at-grade accidents*
- *Promote transit usage to, from and around the City of Newark's planned transit oriented center*

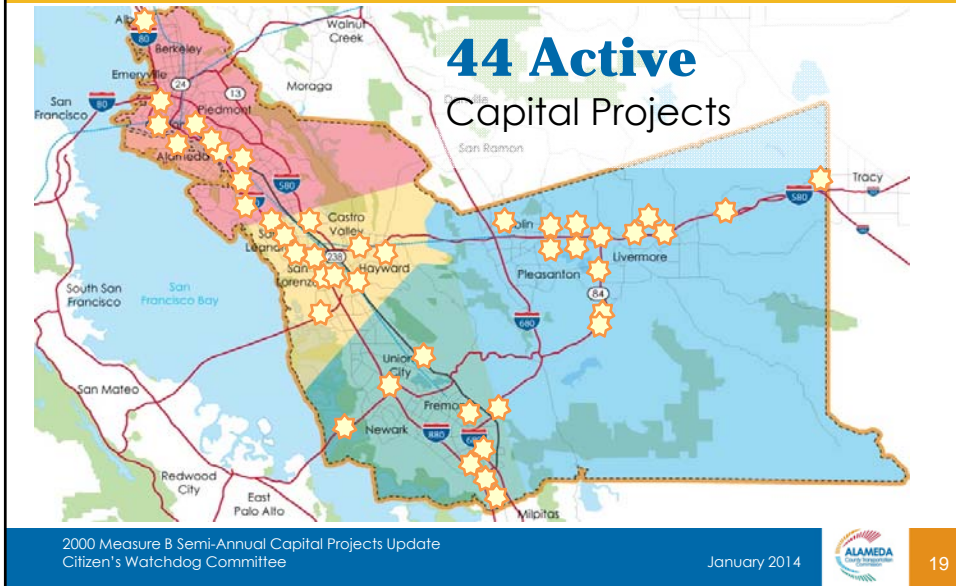
## Alameda CTC Capital Project Program Summary

**\$4 billion**

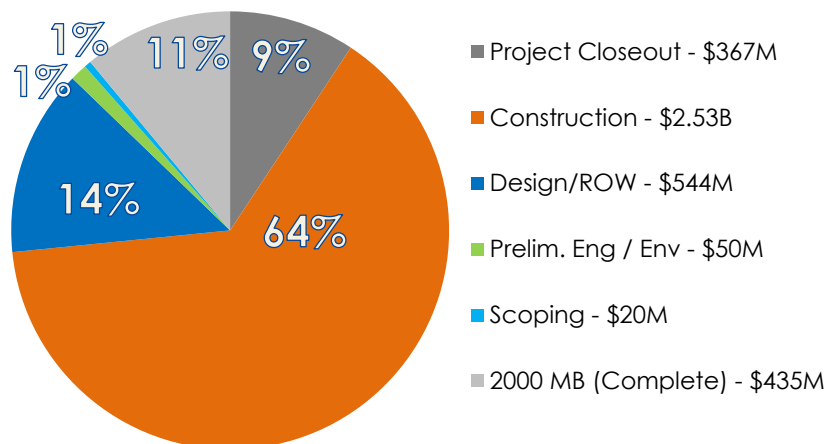
Capital Projects Program:

- 1986 Measure B Remaining Projects
- **2000 Measure B Projects**
- Prop 1B Bond and Other Projects

## Active Capital Projects Location Map



## Alameda CTC Capital Projects Program by Phase





## Questions —

**For specific status, schedule and funding questions, capital project fact sheets can be found on the Alameda CTC webpage at :**

**[http://www.alamedactc.org/app\\_pages/view/4681](http://www.alamedactc.org/app_pages/view/4681)**

07/11/2013 10:16

***This page intentionally left blank***