



**I-680 SUNOL SMART CARPOOL LANE
JOINT POWERS AUTHORITY**

MEETING NOTICE

Monday, March 12, 2012, 9:30 am
1333 Broadway, Suite 300, Oakland, California 94612
(see map on last page of agenda)

Commission Chair

Mark Green, Mayor – Union City

Commission Vice Chair

Scott Haggerty, Supervisor – District 1

AC Transit

Greg Harper, Director

Alameda County

Supervisors

Nadia Lockyer – District 2

Wilma Chan – District 3

Nate Miley – District 4

Keith Carson – District 5

BART

Thomas Blalock, Director

City of Alameda

Rob Bonta, Vice Mayor

City of Albany

Farid Javandel, Mayor

City of Berkeley

Laurie Capitelli, Councilmember

City of Dublin

Tim Sbranti, Mayor

City of Emeryville

Ruth Atkin, Councilmember

City of Fremont

Suzanne Chan, Vice Mayor

City of Hayward

Olden Henson, Councilmember

City of Livermore

John Marchand, Mayor

City of Newark

Luis Freitas, Vice Mayor

City of Oakland

Councilmembers

Larry Reid

Rebecca Kaplan

City of Piedmont

John Chiang, Vice Mayor

City of Pleasanton

Jennifer Hosterman, Mayor

City of San Leandro

Joyce R. Starosciak, Councilmember

Executive Director

Arthur L. Dao

Chair:

Scott Haggerty -- Alameda CTC

Vice Chair:

Bill Harrison -- Alameda CTC

Members:

Mark Green -- Alameda CTC

Jennifer Hosterman -- Alameda CTC

Gail R. Price -- Santa Clara VTA

Staff Liaison:

Stewart Ng

Executive Director:

Arthur L. Dao

Secretary:

Christina Ramos

AGENDA

*Copies of Individual Agenda Items are Available on the:
Alameda CTC Website -- www.AlamedaCTC.org*

1 PLEDGE OF ALLEGIANCE

2 ROLL CALL

3 PUBLIC COMMENT

Members of the public may address the Board during “Public Comment” on any item not on the agenda. Public comment on an agenda item will be heard when that item is before the Board. Only matters within the Board’s jurisdictions may be addressed. Anyone wishing to comment should make their desire known by filling out a speaker card and handing it to the Secretary. Please wait until the Chair calls your name. Walk to the microphone when called; give your name, and your comments. Please be brief and limit comments to the specific subject under discussion. Please limit your comment to three minutes.

4 CONSENT CALENDAR

4A. Approval of the Minutes of February 13, 2012* – **Page 1**

A

5 ADMINISTRATIVE MATTERS

5A. Review and Approval of the FY2011-12 mid-year Express Lane
Operating Budget Update * – **Page 7**

A

5B. Review and Acceptance of the Sunol Smart Carpool Lane “Annual
Report” for FY 2010/11**

A

6	UPDATES	
6A.	Review of the I-680 SB Express Lane Operations Work Plan **	I
6B.	Review of the I-680 SB Express Lane Operations Update** – Page 11	I
6C.	Review of the I-680 SB HOV Monthly Construction Update* – Page 17	I
7	COMMITTEE MEMBER REPORTS (Verbal)	I
	No items this month.	
8	STAFF REPORTS (Verbal)	I
	No items this month.	
9	ADJOURNMENT/NEXT MEETING: April 9, 2012	I

Key: A- Action Item; I – Information Item

- (*) Materials Enclosed
- (**) Verbal presentation will be made or materials will be available at the meeting.
- (#) All items on the agenda are subject to action and/or change by the Board.

*PLEASE DO NOT WEAR SCENTED PRODUCTS SO INDIVIDUALS WITH
ENVIRONMENTAL SENSITIVITIES MAY ATTEND*

*Alameda County Transportation Commission
1333 Broadway, Suites 220 & 300, Oakland, CA 94612
(510) 208-7400 (New Phone Number)
(510) 836-2185 Fax (Suite 220)
(510) 893-6489 Fax (Suite 300)
www.alamedactc.org*

Glossary of Acronyms

ABAG	Association of Bay Area Governments	MTC	Metropolitan Transportation Commission
ACCMA	Alameda County Congestion Management Agency	MTS	Metropolitan Transportation System
ACE	Altamont Commuter Express	NEPA	National Environmental Policy Act
ACTA	Alameda County Transportation Authority (1986 Measure B authority)	NOP	Notice of Preparation
ACTAC	Alameda County Technical Advisory Committee	PCI	Pavement Condition Index
ACTC	Alameda County Transportation Commission	PSR	Project Study Report
ACTIA	Alameda County Transportation Improvement Authority (2000 Measure B authority)	RM 2	Regional Measure 2 (Bridge toll)
ADA	Americans with Disabilities Act	RTIP	Regional Transportation Improvement Program
BAAQMD	Bay Area Air Quality Management District	RTP	Regional Transportation Plan (MTC's Transportation 2035)
BART	Bay Area Rapid Transit District	SAFETEA-LU	Safe, Accountable, Flexible, Efficient Transportation Equity Act
BRT	Bus Rapid Transit	SCS	Sustainable Community Strategy
Caltrans	California Department of Transportation	SR	State Route
CEQA	California Environmental Quality Act	SRS	Safe Routes to Schools
CIP	Capital Investment Program	STA	State Transit Assistance
CMAQ	Federal Congestion Mitigation and Air Quality	STIP	State Transportation Improvement Program
CMP	Congestion Management Program	STP	Federal Surface Transportation Program
CTC	California Transportation Commission	TCM	Transportation Control Measures
CWTP	Countywide Transportation Plan	TCRP	Transportation Congestion Relief Program
EIR	Environmental Impact Report	TDA	Transportation Development Act
FHWA	Federal Highway Administration	TDM	Travel-Demand Management
FTA	Federal Transit Administration	TEP	Transportation Expenditure Plan
GHG	Greenhouse Gas	TFCA	Transportation Fund for Clean Air
HOT	High occupancy toll	TIP	Federal Transportation Improvement Program
HOV	High occupancy vehicle	TLC	Transportation for Livable Communities
ITIP	State Interregional Transportation Improvement Program	TMP	Traffic Management Plan
LATIP	Local Area Transportation Improvement Program	TMS	Transportation Management System
LAVTA	Livermore-Amador Valley Transportation Authority	TOD	Transit-Oriented Development
LOS	Level of service	TOS	Transportation Operations Systems
		TVTC	Tri Valley Transportation Committee
		VHD	Vehicle Hours of Delay
		VMT	Vehicle miles traveled

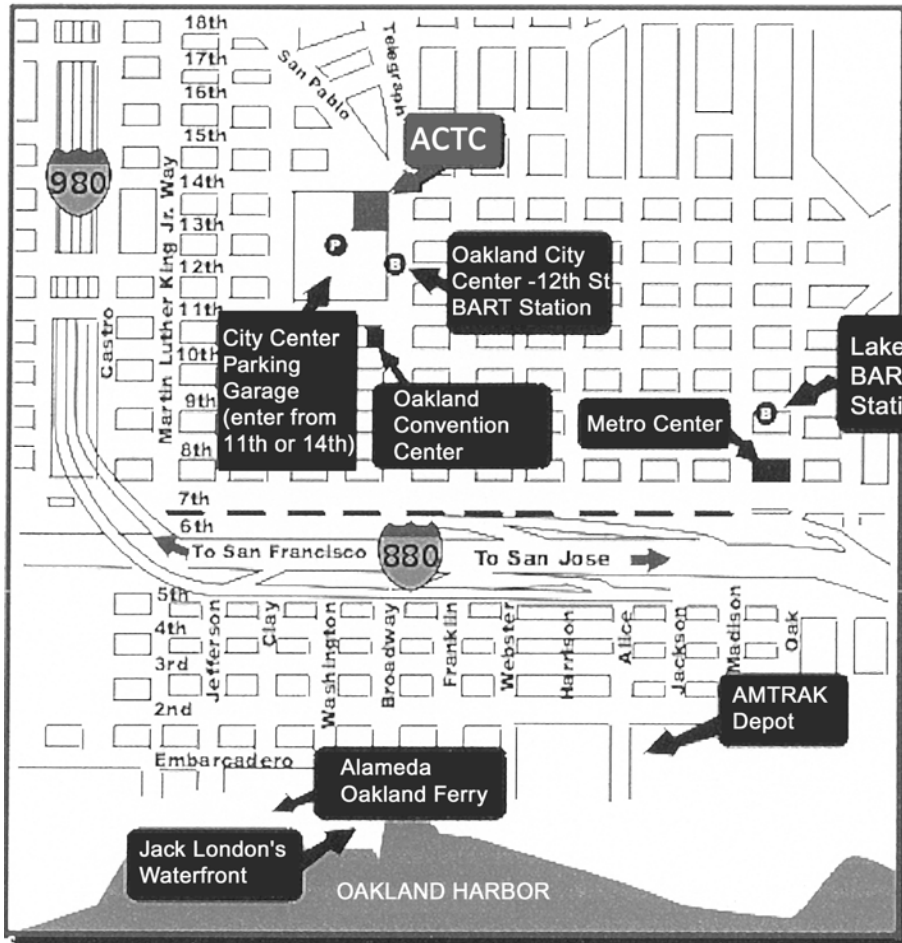


1333 Broadway, Suites 220 & 300

Oakland, CA 94612

PH: (510) 208-7400

www.AlamedaCTC.org



Directions to the Offices of the Alameda County Transportation Commission:

**1333 Broadway, Suite 220
Oakland, CA 94612**

Public Transportation Access:

BART: City Center / 12th Street Station

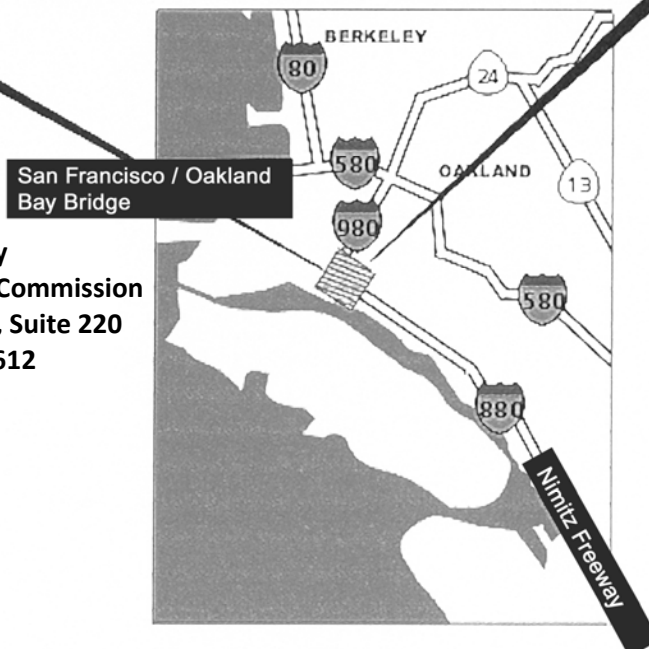
AC Transit:

Lines 1, 1R, 11, 12, 13, 14, 15, 18, 40, 51, 63, 72, 72M, 72R, 314, 800, 801, 802, 805, 840

Auto Access:

- Traveling South: Take 11th Street exit from I-980 to 11th Street
- Traveling North: Take 11th Street/Convention Center Exit from I-980 to 11th Street
- Parking: City Center Garage – Underground Parking, (Parking entrances located on 11th or 14th Street)

**Alameda County
Transportation Commission
1333 Broadway, Suite 220
Oakland, CA 94612**





I-680 Sunol Smart Carpool Lane JPA Meeting
MINUTES OF FEBRUARY 13, 2012
OAKLAND, CALIFORNIA

The meeting was convened by the Chair, Supervisor Haggerty, at 9:30am

1 PLEDGE OF ALLEGIANCE

Dao led the pledge of allegiance.

2 ROLL CALL

All board members except for Mayor Green were present; a quorum was confirmed. Green arrived shortly after the roll call at 9:35.

3 PUBLIC COMMENT

There were no public comments

4 CONSENT CALENDAR

4A. Approval of the Minutes of January 9, 2012*

A motion to approve the minutes of January 9, 2012 was moved by Hosterman and seconded by Harrison; approved unanimously.

5 ADMINISTRATIVE MATTERS

- 5A. Approval of the Year-to-Date (YTD) Operating Statement of Revenues and Expenditures of the Sunol Smart Carpool Lane for the period ended December 31, 2011:** Reavey presented the report to the JPA Board for approval. A motion to approve was made by Harrison and seconded by Hosterman; the motion passed unanimously.

Questions

- Harrison asked for clarification of "other" consultant cost of \$28,000; Reavey explained that it is for the Executive Directors contract pay out, and will have corresponding revenues from CMA TIP according to the contract language.

6 UPDATES

- 6A. I-680 SB Express Lane Operations Update:** Furger reviewed the I-680 SB Express Lane (EL) Operations Update through 71 weeks of operation. Furger presented a power point at the meeting; this was an informational item only. The presentation included the following information:

- Seventy-one Week Summary of Revenue, Trips and Toll Rates
- A Week by Week Summary of Gross & Cumulative Revenue for 71 Weeks
- Daily Revenue and Trips Comparisons

- Typical Daily Revenue, Trips and Toll Rate by Each Hour
- Recent Incidents in EL
- Top Twenty Cities Utilizing the EL
- CHP Enforcement Summary

Furger notified the Board that there were three incidents in the last three days that affected the EL. Furger noted that to the best of his knowledge, prior to these incidents, only two other incidents occurred since the EL opened on September 20, 2010.

Incident #1 - February 9, 2012 (9:30am) Big rig accident blocked two southbound General Purposes (GP) lanes:

- CHP directed traffic onto the EL
- GP Lanes speed dropped to 10 MPH at North End
- EL speed remained about 60 MPH
- JPA maintenance field personnel informed staff of incident
- Staff changed toll rate signs to display "OPEN TO ALL"
- Caltrans, TMC and CHP were informed of the change
- Incident was cleared around 11:00 am
- Tolling of full facility resumed at 11:10 am

Incident #2 – February 10, 2012 (10:00am) Motorcycle breaks down in EL:

- CHP directed traffic out of the EL in the accident area
- Vehicles were allowed to re-enter the EL just past the accident site
- EL speed remained about 60 MPH
- Accident was cleared within 30 minutes

Incident #3 – February 13, 2012 (5:15am) Accident in EL near Vargas Rd.:

- CHP closes EL to all traffic north of the area
- Vehicles were allowed to re-enter the EL just past the accident site
- Accident was cleared around 6:00 am

Questions

- Haggerty inquired whether any of the accidents occurred due to users incorrectly entered in and out of the Express Lane. Furger responded that he did not believe so and added that JPA staff meets with the CHP once a month to fine tune communications, and each of the three incidents went as smooth as they could have gone.
- Hosterman inquired why we were seeing higher EL usage on Fridays. Furger clarified and responded that it is a small increase observed during p.m. commute hours on Fridays when compared to Monday through Thursday travel and/or usage. His understanding is that the increase is attributed to out of town travel.
- Haggerty inquired whether the Friday p.m. usage increase has been analyzed (i.e. events at H.P. Pavilion etc. influenced the increase). Haggerty requested additional information for confirming why more people are using EL on Friday afternoons for

marketing purposes.

- Green added that Castro Valley being on the top twenty users list may be an indication that I-880 is so congested that users are using I-680 to access the South Bay instead of using I-880.
- Haggerty requested number of users from the top twenty cities.
- Hosterman asked if the facility will generate enough revenue to take care of future maintenance in the corridor. Furger responded that before the facility opened resurfacing and paving were done to current standards and the pavement should last up to 10 years, with the exception of minor pot hole repairs. JPA does set aside a token amount of \$200,000 a year for future maintenance and rehab, an additional \$200,000 - \$300,000 a year for future equipment replacement. Hosterman noted that to the extent we can set aside moneys for future maintenance it is a direction we should go in, as future funding from the State and Federal government lessens.
- Haggerty expressed concerned regarding CHP's enforcement track record for this month, more verbal warning provided while fewer citations issued; Furger has asked the CHP to put together another strike force scheduled for February 21, 2012.
- Harrison asked if it is worth bringing out the media to draw attention to the strike force, Furger did not suggest involving the media.
- Furger introduced Brian Zukowski as a consultant staff member who helped put together the presentation materials for the JPA.

- 6B. Review of I-680 SB HOV Widening Monthly Update:** Landin-Lowe reviewed the status update of the I-680 SB HOV Widening Project, this was an informational item. She indicated that all construction contracts are within budget and most are indeed complete. The last remaining on-going contract (Contract #2) is expected to be closed out ahead of the planned June 2012 close out date. A 3-year plant establishment period commenced on the Mitigation Contract, and the follow-on Landscape design is on-hold to coordinate with the timing of Freeway Performance Initiate project, planned within the corridor.

Questions

- Haggerty spoke about the transition from I-580 to I-680 Express Lanes, and asked if we were planning for this transition. Dao responded that nothing is planned at this moment regarding the I-580 / I-680 transition; he however stated that there is \$20M included in the Transportation Expenditure Plan (TEP) and the staff will look at options, including a direct connector at that location. Dao also suggested conducting a feasibility study for Route 84 express lane.
- Furger suggested that there needs to be a future policy discussion/decision to give users a toll break those intend to use both the I-680 EL and I-580 EL. The JPA should think about optimizing usage and balance the revenues and give users an incentive to use both facilities.

7 COMMITTEE MEMBER REPORTS (Verbal)

None this month.

8 STAFF REPORTS (Verbal)

Dao acknowledged this meeting as Furger's last meeting with the committee, and thanked him for his hard work and dedication to the Agencies over the last 12 years. Furger credited the Board members for standing behind the Express Lanes and for their support.

9 ADJOURNMENT/NEXT MEETING: March 12, 2012

Attested by:

A handwritten signature in black ink that reads "Christina Ramos". The signature is written in a cursive, flowing style.

Christina Ramos
JPA Secretary



**SUNOL SMART CARPOOL LANE
JOINT POWERS AUTHORITY GOVERNING BOARD**

February 13, 2012

Alameda County Transportation Commission
Conference Room A & B, Third Floor
1333 Broadway, Suite 300, Oakland, CA

JURISDICTION/AGENCY	COMMISSIONERS	Initials	ALTERNATES	Initials
Alameda County, District 1	Scott Haggerty, Chair	<i>[Signature]</i>		
City of Fremont	William Harrison, Vice Chair	<i>[Signature]</i>		
City of Union City	Mark Green	<i>[Signature]</i>		
City of Pleasanton	Jennifer Hosterman	<i>[Signature]</i>	John Marchand (City of Livermore)	
Santa Clara VTA	Gail A. Price	<i>[Signature]</i>		
JURISDICTION/AGENCY	CONTACT NAME	Initials	CONTACT NAME	Initials
ALAMEDA CTC STAFF / CONSULTANTS	Arthur L. Dao, Executive Director	<i>and</i>		
	Stewart Ng, Director of Programming and Project Management	<i>[Signature]</i>		
	Patricia Reavey, Director of Finance	<i>prk</i>		
	Kanda Raj, SSCLJPA Operations Manager	<i>K.R.</i>	Frank R. Furger, SSCLJPA Operations Manager	<i>[Signature]</i>
	Christina Ramos, I-680 SSCLJPA Secretary	<i>CR</i>		
LEGAL COUNSELS	Zack Wasserman, WRBD	<i>[Signature]</i>		
	Pamela Shock Mintzer, WRBD	<i>[Signature]</i>		
	Neal Parish, WRBD	<i>[Signature]</i>		
CALTRANS	Emily Landin -Lowe	<i>[Signature]</i>	Mark Zabaneh	
OTHERS	Gladys V. Parmela	<i>[Signature]</i>		

**SUNOL SMART CARPOOL LANE
JOINT POWERS AUTHORITY GOVERNING BOARD
ROSTER OF ATTENDANCE
February 13, 2012**

Page 6



**I-680 SSCLJPA Meeting 3/12/12
Agenda Item 5A**

Memorandum

DATE: February 26, 2012

TO: Sunol SMART Carpool Lane JPA

FROM: Arthur L. Dao, Executive Director
Patricia M. Reavey, Director of Finance

SUBJECT: **Fiscal Year 2011-2012 Mid-Year Budget Update**

Recommendation

It is recommended that the Sunol Smart Carpool Lane JPA (JPA) Board review and approve the attached FY2011-12 mid-year Express Lane operating budget update (Attachment A).

Summary of Adjustments

Since the JPA Board approved the audited financial statements in November, 2011, the actual FY2010-11 unrestricted net asset roll forward balance of \$628,567 is available to include in the updated budget. This is an increase over the projected roll forward balance of \$33,567. It is important to update this information in order to project the most accurate unrestricted net asset balance possible for the year ended June 30, 2012.

Due to the format of the funding contract entered into between the JPA and the CMA TIP Exchange Fund to fund the Executive Director and other consultant contracts, this operating expense which is projected to be up to \$200,000 for FY2011-12 will be paid through the JPA and appear on the JPA's financial statements along with the corresponding CMA TIP revenues. The proposed updated budget has been adjusted to include this amount as both revenue and expense.

The projection for Express Lane Maintenance has also been increased from \$100,000 to \$150,000 to include all projected Caltrans maintenance expenses through the end of the fiscal year.

As in the current adopted budget, the budget update includes a \$150,000 reserve for replacement of toll system equipment, software and hardware at the end of the projected useful lifecycle of the components for a cumulative balance of \$300,000. The reserve will also serve as an emergency contingency to address costs associated with unanticipated equipment failure or damage. The budget update also includes a \$100,000 reserve for future roadway rehabilitation for a cumulative balance of \$200,000. This reserve will set aside funding for the Express Lanes share of costs for rehabilitation of the roadway at the end of the pavement lifecycle. The reserve will also serve as a contingency to address costs associated with unanticipated emergency roadway repairs that may be required.

Fiscal Impact

The impact of the Proposed Update to the FY2011-12 Budget would be to provide additional resources of \$200,000 and authorize additional expenses of \$250,000 which would reflect an overall

decrease in unrestricted net assets of \$50,000 for a projected Ending Unrestricted Net Asset balance of \$1,281,567.

Attachments

Attachment A - Sunol Smart Carpool Lane JPA FY2011-12 Mid-Year Budget Update

**SUNOL SMART CARPOOL LANE
Fiscal Year 2011-12
Mid-Year Budget Adjustment**

	FY 11-12 Adopted Budget	FY 11-12 Proposed Adjustments	FY 11-12 Proposed Updated Budget
Beginning Unrestricted Net Assets	\$ 595,000	\$33,567	\$ 628,567
<u>OPERATING REVENUES</u>			
Toll Revenue	850,000		850,000
CMA TIP Revenue	-	200,000	200,000
Interest Income	3,000		3,000
Total Operating Revenues	853,000		1,053,000
<u>OPERATING EXPENSES</u>			
Express Lane Maintenance (Caltrans)	100,000	50,000	150,000
Other Consultant Costs	50,000	200,000	250,000
Total Operating Expenses	150,000		400,000
Operating Surplus/(Deficit)	\$ 703,000		\$ 653,000
Ending Unrestricted Net Assets	\$ 1,298,000		\$ 1,281,567
Less Cumulative Reservations for:			
Toll System/Software/Hardware Replacement	300,000		300,000
Roadway Rehabilitation	200,000		200,000
Total Reserves	500,000		500,000
Ending Net Assets Available	\$ 798,000		\$ 781,567

This page intentionally left blank.



I-680 SSCLJPA Meeting, 3/12/2012
Agenda Item 6B

Date: March 5, 2012

To: Sunol Smart Carpool Lane JPA

From: Arthur L. Dao, Executive Director

Subject: Express Lane Operations Summary

The following summarizes the operations of the I-680 Express Lane through February 2012:

YTD Revenue (Actual Gross vs. Forecasted)

	Actual Gross	Vs.	Forecasted
Total Revenue in FY 2010/11 (Sept. 2010 – June 2011)	\$657,607		\$595,000
YTD Revenue in FY 2011/12 (July 2011 – Feb. 2012)	\$700,790		\$566,667 *
			(July 2011 – Feb. 2012)

* - Forecasted FY 12 Revenue is \$850,000

Year Over Year Comparison by Month

	February 2011	February 2012
Total Monthly Revenue	\$79,806.75	\$98,389.20
Average Daily Revenue	\$3,990.34	\$4,685.20
Highest Daily Revenue	\$11,372.65	\$6,659.50
Total Monthly Trips (EL)	28,860	40,734
Average Daily Trips (EL)	1,443	1,940
Highest Daily Trips (EL)	2,324	2,540
Average Peak Hour Toll Rate	\$3.17	\$2.77
Highest Toll Rate	\$7.50	\$7.50

- February 2011 represents 20 days of toll collection.
- February 2012 represents 21 days of toll collection.

Attachments:

Average Travel Speed During Morning Commute Hours
 Average Travel Time During Morning Commute Hours
 Average Daily Express Lane Revenue & Trip Comparison
 Average Monthly/Daily Express Lane Trip Comparison
 Average Monthly/Daily Express Lane Revenue Comparison

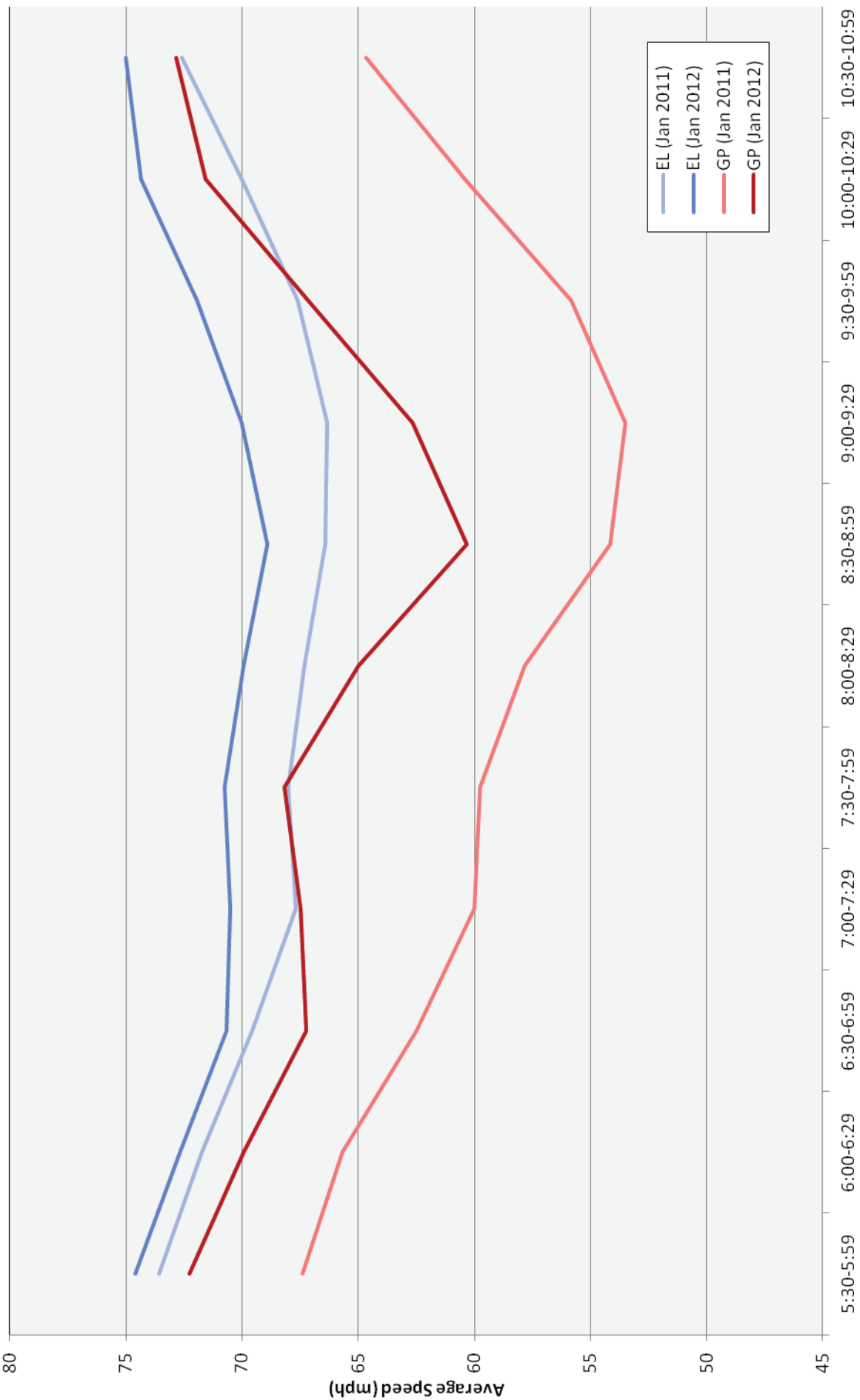


Figure 1 – Average Travel Speed During Morning Commute Hours

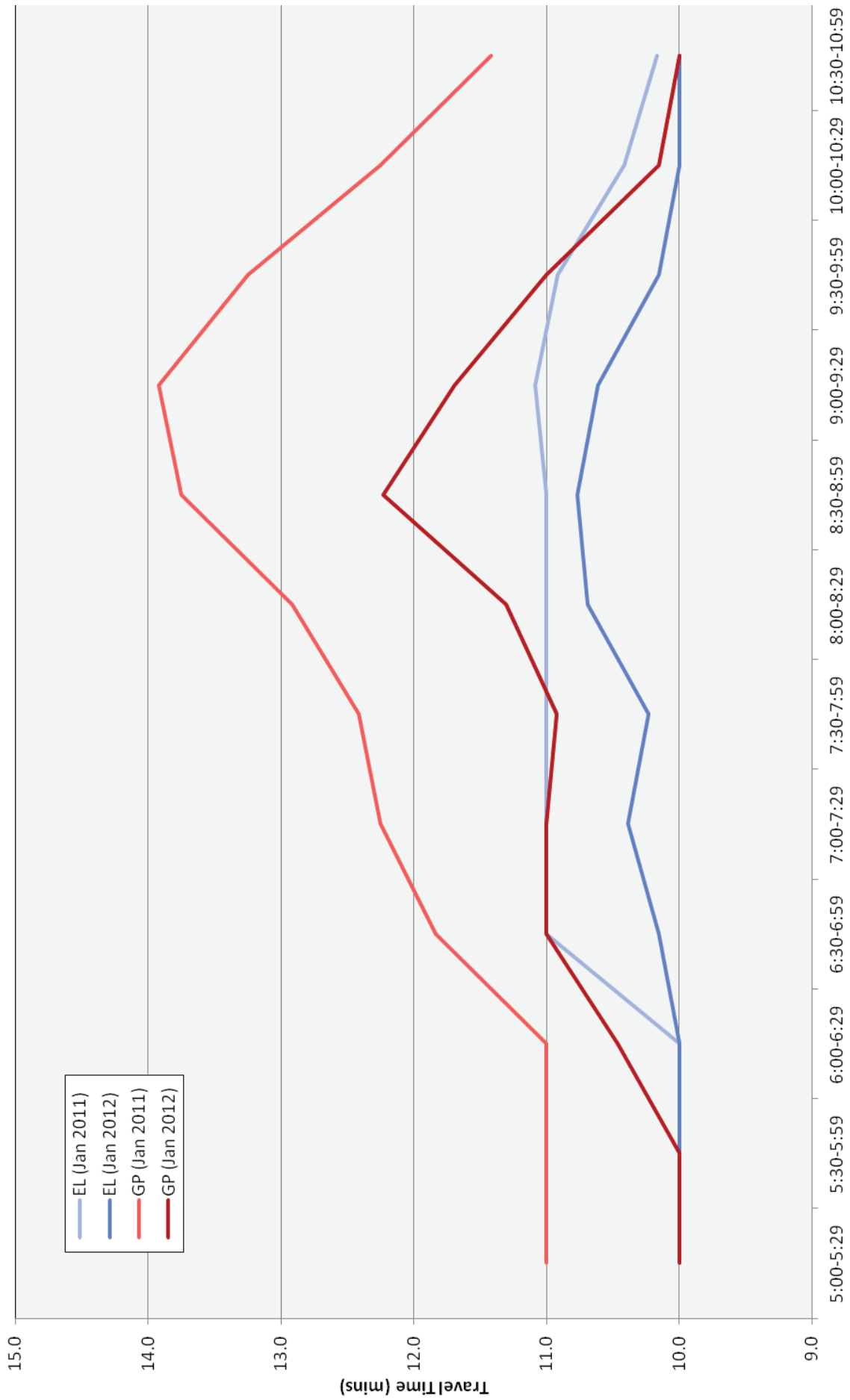


Figure 2 – Average Travel Time During Morning Commute Hours

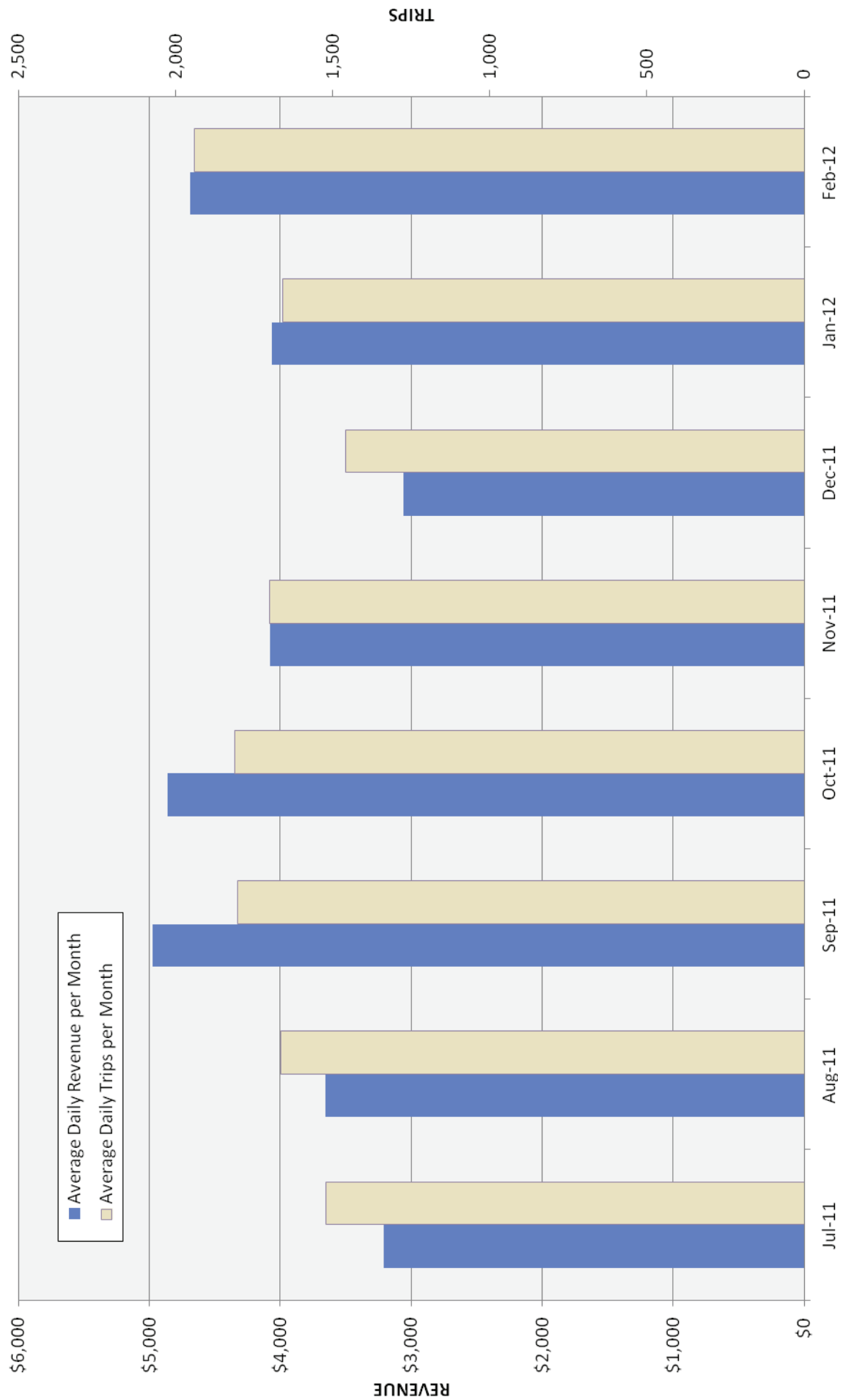


Figure 3 – Average Daily Express Lane Revenue & Trip Comparison

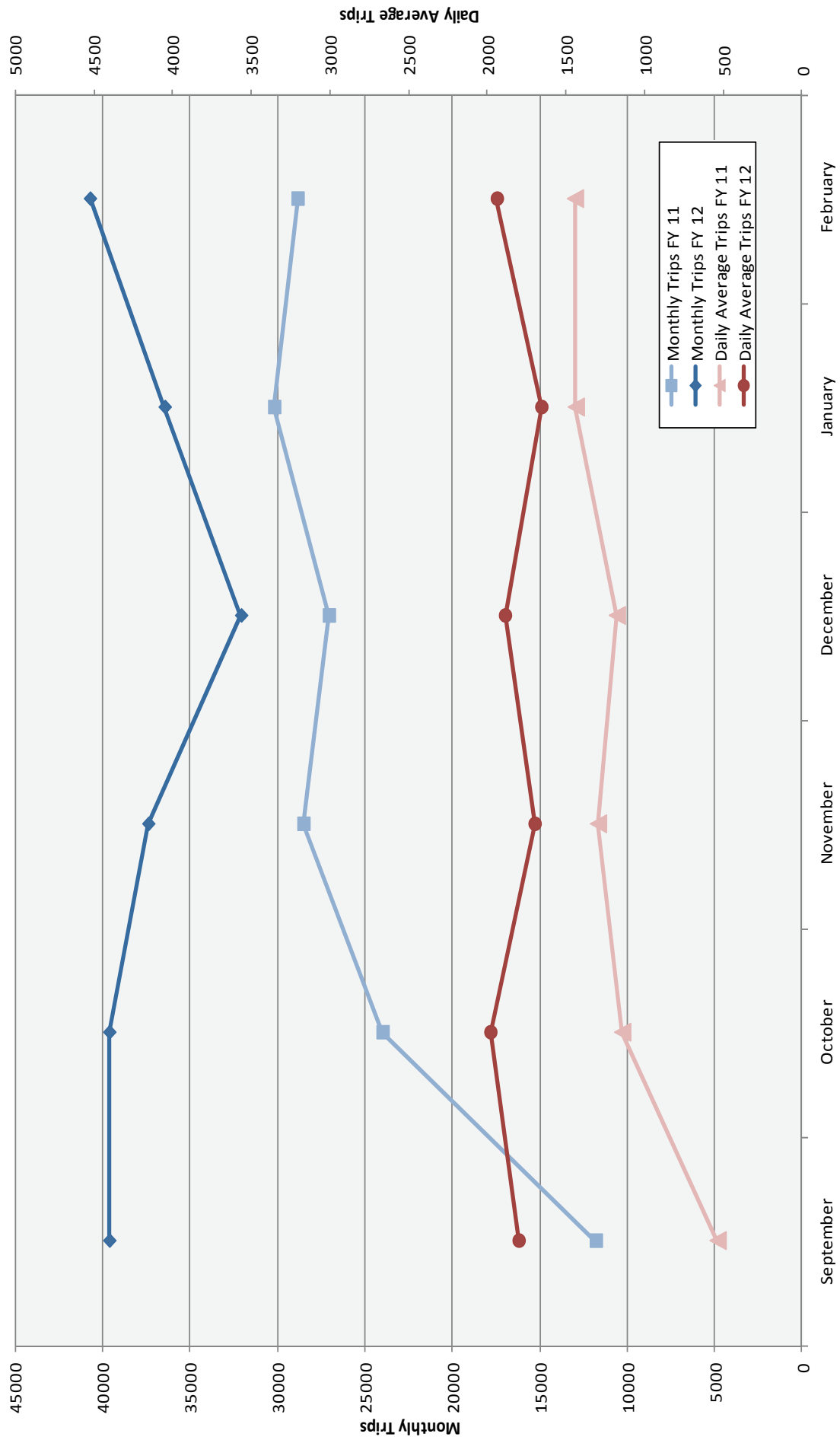


Figure 4 – Average Monthly/Daily Express Lane Trips Comparison

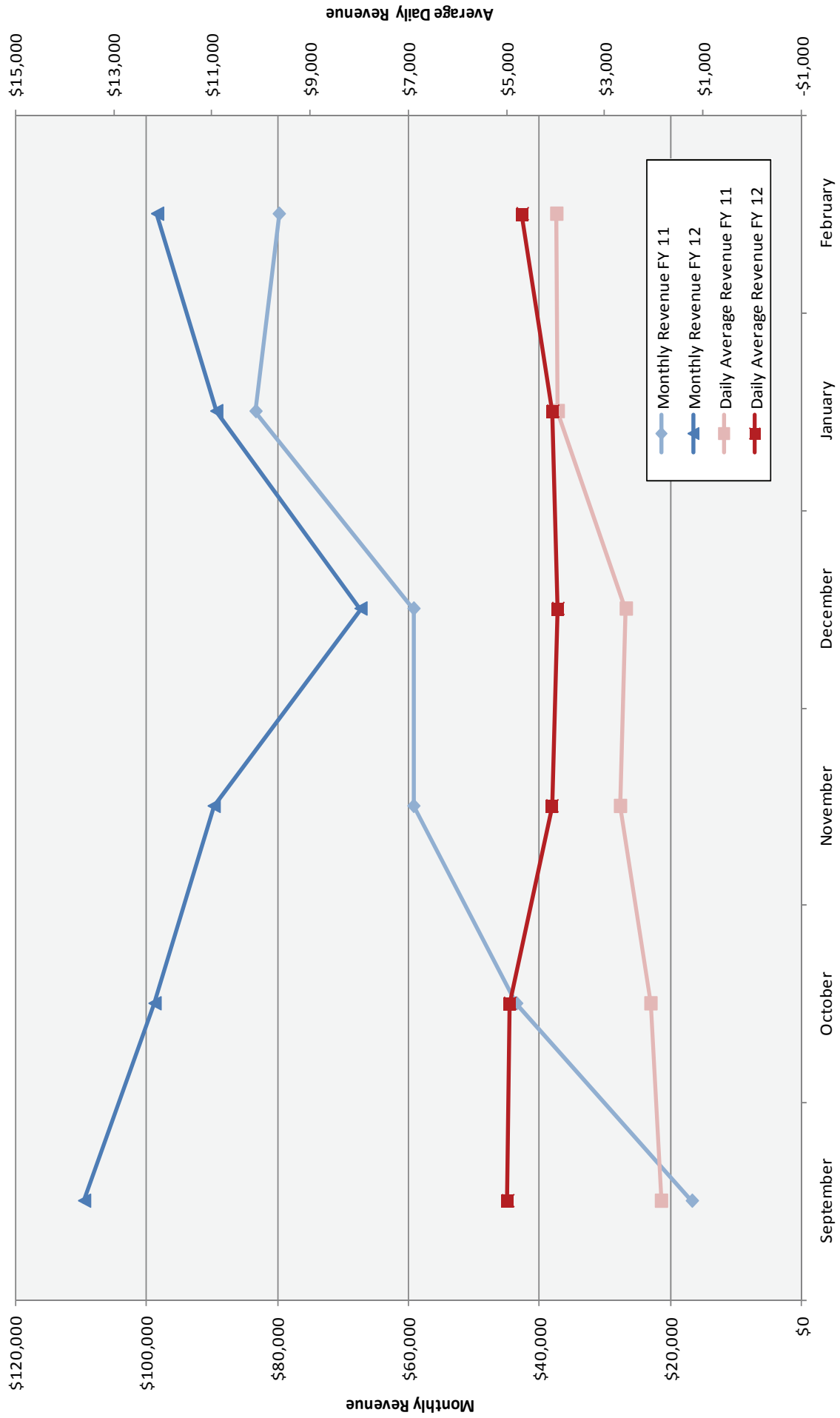


Figure 5 – Average Monthly/Daily Express Lane Revenue Comparison



**I-680 SSCLIPA Meeting, 3/12/2012
Agenda Item 6C**

Memorandum

DATE: February 28, 2012

TO: Sunol Express Lane Joint Powers Authority

FROM: Emily Landin-Lowe, Regional Project Manager - Caltrans
Kanda Raj, Project Controls Team – Alameda CTC

SUBJECT: I-680 SB HOV Widening Status Update

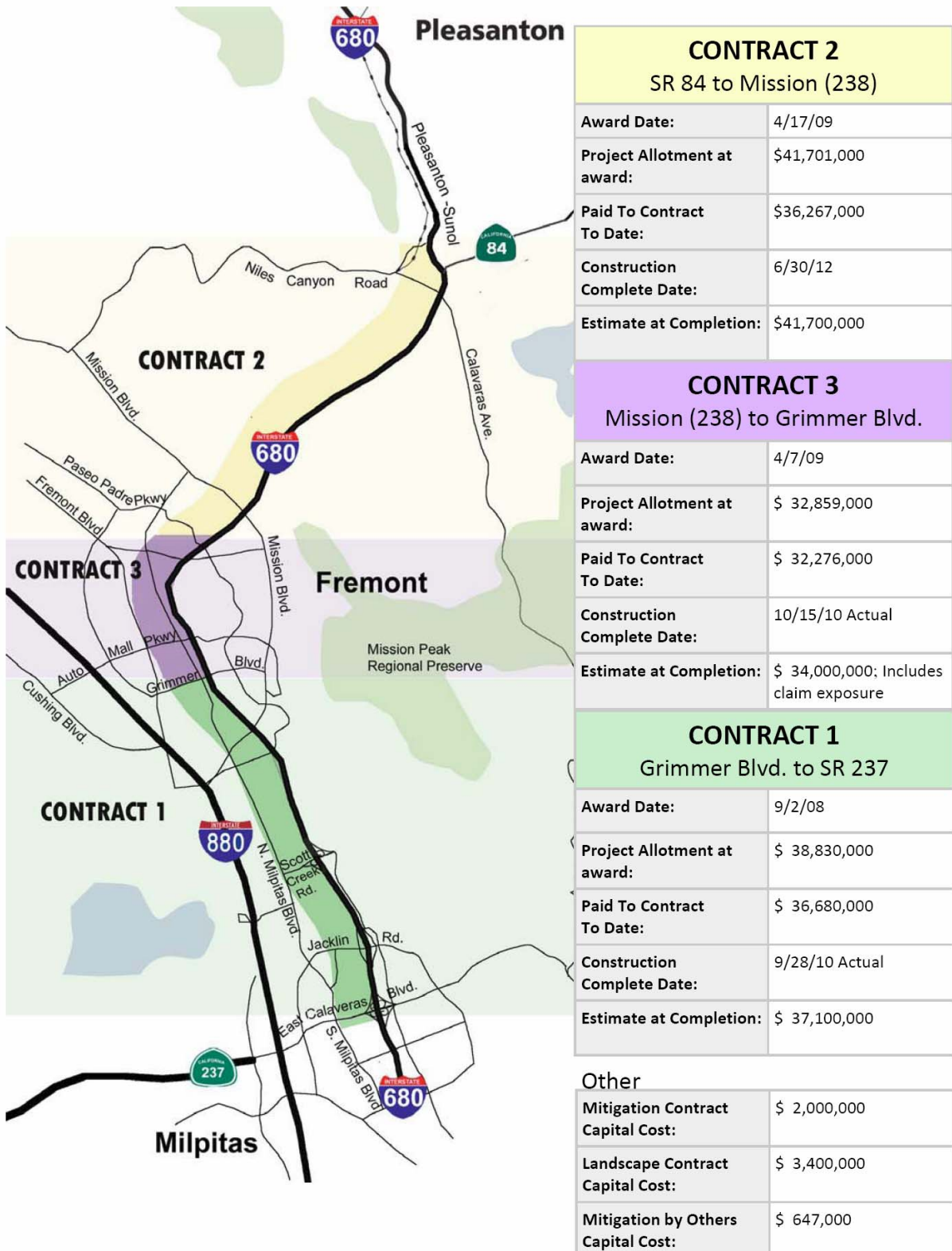
Action

Attached for the Board's review and information is the status update for the I-680 SB HOV/Express Lane project – Caltrans administered Civil Elements. The CMA is the sponsor of the HOT element of the I-680 Express Lane. However, the construction phase of the civil elements of this project is administered by Caltrans. The status report covers all activities through February 28, 2012.

Background

The 14 mile I-680 Express Lane extends from Highway 84 in the City of Pleasanton to Highway 237 in the City of Milpitas. The project widened the existing facility to allow the conversion of the HOV lane to Express (HOT) Lane. When the express lane opened it allowed carpools to travel free of charge and charged a toll for single occupancy vehicles to use the excess capacity in the High Occupancy Toll (HOT) lane. The scope of the project consists of two elements; the Civil Element, widening to accommodate HOT; and the Electronic Toll System Element that includes the Dynamic Pricing.

I-680 EXPRESS LANE CONTRACT STATUS DIAGRAM





I-680 HOV/EXPRESS LANE PROJECT
Construction of Civil Elements
Status Report
For
February 2012

PROJECT DESCRIPTION

The I-680 Express Lane project allows carpools to travel free of charge and charges a toll for single occupancy vehicles to use the excess capacity in the High Occupancy Toll (HOT) lane. This project widened I-680 to accommodate the existing High Occupancy Vehicle (HOV) lane and HOT lane; constructed improvements to provide a HOT lane along southbound I-680 from State Route (SR) 84 to Santa Clara County SR 237; and rehabilitated the existing pavement. The Civil Elements of the project was divided into five Contracts. Below is the update of each contract:

CONTRACT 2 (Caltrans administered) - HOV/HOT Lane & Rehabilitation, from SR 238 to Stoneridge Drive.

CONTRACT STATUS

All contract work is complete. Minor change order will be completed in February. Contract is within budget. Expected completion is ahead of the previously reported 6/30/12 date.

CONTRACT 1 (Caltrans administered) - HOV/HOT Lane & Rehabilitation, from Grimmer Boulevard to SR 238.

CONTRACT STATUS

Construction was completed September 27, 2010. Closeout in process, most issues have been resolved.

CONTRACT 3 (Caltrans administered) - HOV/HOT Lane & Rehabilitation, from SR 237 to Grimmer Boulevard

CONTRACT STATUS

Construction was completed October 15, 2010. Claims have been resolved. Closeout is in process.

CONTRACT 5 (Caltrans administered) – Mitigation at Sabercat

CONTRACT STATUS

Construction work is complete. Planting is complete. Plant establishment will continue for 3 years.

CONTRACT 6 (Caltrans design & administered) – Landscape

CONTRACT STATUS

Design on hold due to better coordinate the timing of a Freeway Performance Initiative Project. Project will be rescheduled to avoid rework.

OTHER ISSUES:

There is an additional contract under a cooperative agreement with the City of Dublin administering for required mitigation. Construction is complete and the City of Dublin will monitor for 20 years. Final invoice to City of Dublin was paid and project is within budget.

CTC approved the payback of \$10M in LONP/TCRP funds to ACTC for Contract 2, and ACTC already received payment from Caltrans. A second 2011/12 LONP/TCRP request for payback is anticipated to go to CTC for an allocation in April 2012.