



Meeting Notice

1111 Broadway, Suite 800, Oakland, CA 94607

• 510.208.7400

• www.AlamedaCTC.org

Commission Chair
Supervisor Scott Haggerty, District 1

Commission Vice Chair
Councilmember Rebecca Kaplan,
City of Oakland

AC Transit
Director Elsa Ortiz

Alameda County
Supervisor Richard Valle, District 2
Supervisor Wilma Chan, District 3
Supervisor Nate Miley, District 4
Supervisor Keith Carson, District 5

BART
Director Thomas Blalock

City of Alameda
Mayor Marie Gilmore

City of Albany
Vacant

City of Berkeley
Councilmember Laurie Capitelli

City of Dublin
Mayor Tim Sbranti

City of Emeryville
Vice Mayor Ruth Atkin

City of Fremont
Mayor Bill Harrison

City of Hayward
Councilmember Marvin Peixoto

City of Livermore
Mayor John Marchand

City of Newark
Councilmember Luis Freitas

City of Oakland
Vice Mayor Larry Reid

City of Piedmont
Mayor Margaret Fujioka

City of Pleasanton
Mayor Jerry Thorne

City of San Leandro
Councilmember Michael Gregory

City of Union City
Mayor Carol Dutra-Vernaci

Executive Director
Arthur L. Dao

I-680 Sunol Smart Carpool Lane Joint Powers Authority

Monday, July 14, 2014, 9:30 a.m.

**1111 Broadway, Suite 800
Oakland, CA 94607**

Mission Statement

The mission of the Alameda County Transportation Commission (Alameda CTC) is to plan, fund, and deliver transportation programs and projects that expand access and improve mobility to foster a vibrant and livable Alameda County.

Public Comments

Public comments are limited to 3 minutes. Items not on the agenda are covered during the Public Comment section of the meeting, and items specific to an agenda item are covered during that agenda item discussion. If you wish to make a comment, fill out a speaker card, hand it to the clerk of the Commission, and wait until the chair calls your name. When you are summoned, come to the microphone and give your name and comment.

Recording of Public Meetings

The executive director or designee may designate one or more locations from which members of the public may broadcast, photograph, video record, or tape record open and public meetings without causing a distraction. If the Commission or any committee reasonably finds that noise, illumination, or obstruction of view related to these activities would persistently disrupt the proceedings, these activities must be discontinued or restricted as determined by the Commission or such committee (CA Government Code Sections 54953.5-54953.6).

Reminder

Please turn off your cell phones during the meeting. Please do not wear scented products so individuals with environmental sensitivities may attend the meeting.

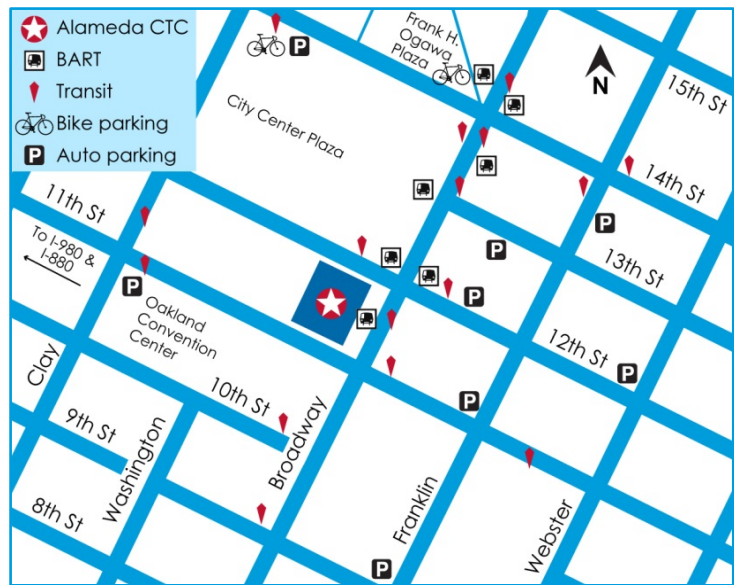
Glossary of Acronyms

A glossary that includes frequently used acronyms is available on the Alameda CTC website at www.AlamedaCTC.org/app_pages/view/8081.

Location Map

★ Alameda CTC
1111 Broadway, Suite 800
Oakland, CA 94607

Alameda CTC is accessible by multiple transportation modes. The office is conveniently located near the 12th Street/City Center BART station and many AC Transit bus lines. Bicycle parking is available on the street and in the BART station as well as in electronic lockers at 14th Street and Broadway near Frank Ogawa Plaza (requires purchase of key card from bikelink.org).



Garage parking is located beneath City Center, accessible via entrances on 14th Street between 1300 Clay Street and 505 14th Street buildings, or via 11th Street just past Clay Street. To plan your trip to Alameda CTC visit www.511.org.

Accessibility

Public meetings at Alameda CTC are wheelchair accessible under the Americans with Disabilities Act. Guide and assistance dogs are welcome. Call 510-893-3347 (Voice) or 510-834-6754 (TTD) five days in advance to request a sign-language interpreter.



Meeting Schedule

The Alameda CTC meeting calendar lists all public meetings and is available at www.AlamedaCTC.org/events/upcoming/now.

Paperless Policy

On March 28, 2013, the Alameda CTC Commission approved the implementation of paperless meeting packet distribution. Hard copies are available by request only. Agendas and all accompanying staff reports are available electronically on the Alameda CTC website at www.AlamedaCTC.org/events/month/now.

Connect with Alameda CTC

www.AlamedaCTC.org



facebook.com/AlamedaCTC

[@AlamedaCTC](https://twitter.com/AlamedaCTC)

youtube.com/user/AlamedaCTC



I-680 Sunol SMART Carpool Lane Joint Powers Authority Meeting Agenda Monday, July 14, 2014, 9:30 a.m.

1111 Broadway, Suite 800, Oakland, CA 94607

• PH: (510) 208-7400

• www.AlamedaCTC.org

1. Pledge of Allegiance

2. Roll Call

3. Public Comment

Chair: Mayor Bill Harrison, City of Fremont

Vice Chair: Mayor Jerry Thome, City of Pleasanton

Commissioners/Members: Scott Haggerty, Gail Price (Santa Clara Valley Transportation Authority), Tim Sbranti

Staff Liaison: Stewart D. Ng

Executive Director: Arthur L. Dao

Clerk: Vanessa Lee

4. Consent Calendar

Page A/I

4.1. [June 9, 2014 I-680 Sunol SMART Carpool Lane JPA Meeting Minutes](#)

1 A

Recommendation: Approve the June 9, 2014 meeting minutes.

5. Regular Matters

5.1. [I-680 Northbound Express Lane \(PN 721.0\): Monthly Status Update](#)

3 I

5.2. [I-680 Southbound Express Lane \(PN 710.5\): Monthly Operations Update](#)

7 I

6. Committee Member Reports (Verbal)

7. Staff Reports (Verbal)

8. Adjournment

Next Meeting: September 8, 2014

All items on the agenda are subject to action and/or change by the Commission.

This page intentionally left blank



I-680 Sunol SMART Carpool Lane Joint Powers Authority Meeting Minutes Monday, June 09, 2014, 9:30 a.m.

4.1

1111 Broadway, Suite 800, Oakland, CA 94607 • PH: (510) 208-7400 • www.AlamedaCTC.org

1. Pledge of Allegiance

2. Roll Call

The Clerk conducted a roll call. All members were present except Commissioner Tim Sbranti and Gail Price of VTA.

Subsequent to the roll call

Commissioner Sbranti arrived during item 6 on the agenda.

3. Public Comment

There were no public comments.

4. Consent Calendar

4.1. May 12, 2014 I-680 Sunol SMART Carpool Lane JPA Meeting Minutes

Commissioner Haggerty moved to approve the Consent Calendar. Commissioner Thorne seconded the motion. The motion passed unanimously (Sbranti and Price absent).

5. Regular Matters

5.1. I-680 Sunol SMART Carpool Lane JPA FY2014-15 Proposed Budget

Patricia Reavey recommended that the authority approve the I-680 Sunol SMART Carpool Lane JPA Proposed Budget for FY2014-15. Patricia stated that there were no changes to the budget since last month's presentation. She stated that the budget reflects a beginning net position balance of \$3,490,395 and includes projected toll revenues of \$1,449,000. She stated that the operating expense budget is \$2,150,000 and will be funded by current and prior year toll revenues and Measure B grant funds. Patricia also stated that the capital expense budget is \$1,400,000 which is funded by Measure B grant funds. She concluded by stating that the projected net position balance at the end of FY2014-15 is \$3,150,791 and is comprised of \$500,000 in reserves, \$1,891,692 of capital assets and \$759,099 of unrestricted net assets.

Commissioner Thorne moved to approve this item. Commissioner Haggerty seconded the motion. The motion passed unanimously (Price, Sbranti absent)

5.2. I-680 Northbound Express Lane (PN 721.0): Monthly Status Update

Gary Sidhu presented the I-680 Northbound Express lane monthly status update. He covered completed activities, upcoming project approval and environmental document activities. Gary provided information on key focus areas, traffic study limits including local approval on study approval. Gary concluded by covering the project schedule over the next three years.

This item was for information only.

5.3. I-680 Southbound Express Lane (PN 710.5): Monthly Operations Update

Arun Goel presented the I-680 Southbound Express Lane Monthly Operations Update. He covered express lane performances, including year-over-year traffic and revenue comparison by month, and highlighted the average travel speed and speed differentials. Arun covered revenue and trips by day of the week and toll range during peak commute hours.

Commissioner Haggerty requested that more comprehensive information about enforcement be brought to the committee. Arun stated that staff brings a detailed presentation on CHP enforcement to the committee on a quarterly basis.

This item was for information only.

6. Committee Member Reports

There were no committee member reports.

7. Staff Reports

There were no staff reports.

8. Adjournment/ Next Meeting

The next meeting is:

Date/Time: Monday, July 14, 2014 @ 9:30 a.m.

Location: Alameda CTC Offices, 1111 Broadway, Suite 800, Oakland, CA 94607

Attested by:

A handwritten signature in blue ink, appearing to read "Vanessa Lee", is written over a horizontal line.

Vanessa Lee,
Clerk of the Commission



Memorandum

5.1

1111 Broadway, Suite 800, Oakland, CA 94607

• PH: (510) 208-7400

• www.AlamedaCTC.org

DATE: July 7, 2014

SUBJECT: I-680 Northbound Express Lane (PN 721.0): Monthly Status Update

RECOMMENDATION: Receive a monthly status update the I-680 Northbound Express Lane Project.

Summary

The I-680 Northbound Express Lane Project will widen I-680 from SR 237 in Santa Clara County to SR 84 in Alameda County and construct a northbound HOV/Express Lane in the corridor. The purpose of this item is to provide the Commission with a monthly status update of project development activities which are either completed or planned for the project. This item is for information only.

Background

The I-680 Northbound Express Lane Project will widen I-680 from SR 237 in Santa Clara County to SR 84 in Alameda County and construct a northbound HOV/Express Lane in the corridor. The project is intended to provide a number of benefits including: 1) enhanced mobility by reducing traffic congestion; 2) reduced travel time and improved travel reliability; 3) reduced congestion related accidents; thereby enhancing safety. The Express Lane facility will utilize available HOV lane capacity by offering solo drivers the choice to pay a toll electronically to access the lane, while regular carpool users continue to use the lane at no cost.

Based on the August 2011 Alameda County Superior Court's ruling on a previously approved project within the same corridor, the project team consulted Caltrans and local cities and determined that the current phase studies should complete a Project Initiation Document and a higher level of environmental analyses for the project. The higher level environmental document requires expanded preliminary engineering, traffic analysis, and technical studies, to obtain environmental clearance for the project.

The Project Team continues to make progress toward completing a final environmental document by summer 2015. The following is a detailed discussion of in progress and/or upcoming major tasks.

Environmental, Traffic and Engineering Studies & Reports

All environmental, traffic and engineering studies & reports are complete, reviewed and approved by Caltrans

Environmental Document

Administrative Draft Environmental Document (DED) is under Caltrans review. Various cycles of internal agency reviews by both Alameda CTC and Caltrans, are expected prior to publishing the DED for public review and comment. Public circulation of the DED and completion of a final document are expected in September 2014 and August 2015, respectively.

Project Approval

The Project Report (PR) process is underway. The Draft PR will document the need for the project and summarize the studies, cost, scope, and overall impact of project alternatives; and its approval is required prior to releasing a DED for public circulation and agency reviews. A Draft PR is planned for completion in September 2014. After the public and agency review process is complete and a preferred alternative is selected by the project development team, the Draft PR will be updated to become the Final PR. Completion of a Final PR indicates Caltrans, FHWA and Alameda CTC approval of the project. Final PR approval for this project is anticipated in August 2015.

Project Implementation Approach

The Project Report and Environmental Document include studies and analysis for both the full project limits (SR 237 to SR 84) and an initial phase of construction (Auto Mall Parkway to SR 84). The limits for the initial phase of construction are based on immediate operational benefits and projected funding availability. Staff is exploring project delivery and funding options to expedite the implementation of the initial phase.

Fiscal Impact: There is no fiscal impact.

Attachments

- A. List of Planned Project Tasks/Technical Studies

Staff Contact

[Stewart Ng](#), Deputy Director of Programming and Projects

[Gary Sidhu](#), Project Controls Team

ATTACHMENT A: LIST OF PLANNED PROJECT TASKS/TECHNICAL STUDIES

ID	DELIVERABLE	STATUS
PRELIMINARY ENGINEERING		
1	PSR-PDS	Approved
TRAFFIC STUDIES		
2	Traffic Data Collection	Complete
3	Existing Conditions Assessment	Approved
4	Model Validation	Approved
5	Traffic Forecasts	Approved
6	Preliminary Traffic Operations Sensitivity Analysis	Approved
7	Traffic Operations Analysis	Approved
8	Traffic Operations Analysis Report (TOAR)	Approved
9	Traffic & Revenue Study	Complete
ENVIRONMENTAL STUDIES		
10	Public Scoping Report	Approved
11	Biological Field Surveys	Approved
12	Bat Species Study	Approved
13	Jurisdictional Wetlands Report	Approved
14	California Red Legged Frog Study	Approved
15	Special Status Plant Species Study	Approved
16	Natural Environment Study (NES)	Approved
17	Biological Assessment	Complete
18	Biological Opinion	
19	Water Quality Assessment	Approved
20	Location Hydraulic Study	Approved
21	Initial Site Assessment	Approved
22	Air Quality PM 2.5 Assessment	Complete
23	Air Quality and Greenhouse Gas Analysis Report	Approved
24	Noise Surveys	Approved
25	Noise Impact Report	Approved
26	Noise Abatement Decision Report (NADR)	Approved
27	Visual Impact Assessment	Approved
28	Community Impact Assessment	Approved
29	APE Mapping	Approved
30	Archaeological Survey Report (ASR)	Approved
31	Historic Architectural History/Built Resources Report (HRER)	Approved
32	Historic Property Survey Report (HPSR)	Approved
33	Paleontological Identification and Evaluation Report	Approved
34	Preliminary Geological Assessment	Approved

ID	DELIVERABLE	STATUS
ENVIRONMENTAL DOCUMENT		
35	Project Description	Complete
36	1 st Admin DEIR/EA	Complete
37	2 nd Admin DEIR/EA	Complete
38	3 rd Admin DEIR/EA	Complete
39	DEIR/EA	
40	1 st Draft FEIR/EA	
41	2 nd Draft FEIR/EA	
42	3 rd Draft FEIR/EA	
43	FEIR/EA	
PROJECT APPROVAL		
44	Geometric Design	Complete
45	Roadway Plans	Complete
46	Traffic Safety Assessment	Complete
47	Fact Sheets (Mandatory and Advisory)	Complete
48	Value Analysis Study	Complete
49	Storm Water Data Report	Approved
50	Pavement Life Cycle Cost Analysis	Approved
51	Hydromodification Assessment Report (included in Item 19)	Approved
52	Utility Coordination	Ongoing
53	R/W Engineering	Complete
54	Advance Planning Study - Bridges	2 nd Draft Underway
55	Advance Planning Study - Special Retaining Walls	2 nd Draft Complete
56	Preliminary Foundation Report	2 nd Draft Underway
57	Preliminary Geotechnical Report	Approved
58	Encroachment Policy Variance Request (Utilities)	Complete
59	Structures Aesthetics Guidelines	Complete
60	Conceptual Landscape Plan	Complete
61	Cost Estimate	Complete
62	1 st Administrative Draft Project Report	Complete
63	2 nd Administrative Draft Project Report	Complete
64	3 rd Administrative Draft Project Report	Complete
65	DPR	Underway
66	Final Project Report	



Memorandum

5.2

1111 Broadway, Suite 800, Oakland, CA 94607

• PH: (510) 208-7400

• www.AlamedaCTC.org

DATE: July 7, 2014

SUBJECT: I-680 Southbound Express Lane (PN 710.5): Monthly Operations Update

RECOMMENDATION: Receive a monthly operations update on the I-680 Southbound Express Lane.

Summary

The purpose of this item is to provide the JPA Board with the May 2014 Monthly Operations Update of the express lane facility. This item is for information only.

Review of May 2014 daily trip and revenue reports indicates that the express lane facility continued to provide travel reliability in the lane, improve traffic congestion and operations within the corridor, including in the general purpose lanes, and thereby increase the overall corridor traffic throughput.

While comparing the year over year performance matrices, it is noted that the average daily number of toll paying trips has increased by approximately 20 percent. This is an indication that more solo drivers are choosing to utilize the Express Lane, to experience the travel reliability and time savings. While it appears that traffic congestion has returned to the corridor with upward economic activities noted in Silicon Valley, the average travel speed in the Express Lane continues to remain steady and stay above the posted speed limit, while core commute hours are extending.

Background

The I-680 Southbound Express Lane opened to traffic in September 2010 and is the first operational express lane facility in Northern California; it is one of a few in the nation to have a shared toll and non-toll facility. The express lane facility spans over 14 miles from SR 84, near Pleasanton, to SR 237 in the City of Milpitas, and admits toll-paying solo drivers in addition to carpoolers (who use the lane at no cost). The express lane optimizes capacity, reduces congestion and increases travel time reliability within the 14 mile corridor.

Constructed within the restricted right-of-way, the facility has no physical barrier between the General Purpose Lanes and the Express Lane, but is separated by a double white

stripe. The Alameda CTC, acting as the managing agency for the JPA has been operating the express lane facility since it has opened to traffic in September 2010.

Since the opening, approximate 1.94 Million solo drivers have reached their destinations by traveling at speeds that are typically 7-12 miles per hour faster (several segments within the 14 mile corridor experience speeds over 24 miles per hour faster) than which motorists experience in the general purpose lanes, during peak commute hour. Travel speeds throughout the corridor on average remained above the posted speed at all times during operational hours and the average work week trips continued to show increase in facility utilization. During traffic incidents and severe congestion the Express Lane remains with high performance and no degradation in reliability or travel time.

Tolls are collected via FasTrak® transponders that are automatically read by readers mounted on overhead gantries. Currently, the I-680 Express Lane includes five FasTrak® readers: one at each toll zone (at Andrade, Washington and Mission), and two at stand-alone enforcement zones (south of Vargas and south of Scott Creek). Readers at the toll zones are linked to the Toll Data Center (TDC). The accounts of vehicles passing through with valid FasTrak® transponders are charged the appropriate toll for the length of their trip, based on the toll rates published via dynamic message signs. Toll rates are calculated by a computerized real-time dynamic pricing model. The enforcement zone readers are not linked to the TDC and are used to aid CHP enforcement by determining if a vehicle has a valid FasTrak® transponder.

The May 2014 operational update (daily/monthly trip, travel time and revenue information) is included as Attachment A.

Fiscal Impact: There is no fiscal impact.

Attachments

A. I-680 Southbound Express Lane May 2014 Operations Update

Staff Contact

[Stewart Ng](#), Deputy Director of Programming and Projects

[Arun Goel](#), Express Lane Operations

Express Lane May 2014 Highlights

- Since 2010: **1.94 million** solo drivers
- Average Speed: **>65 MPH**
- Average Work Week Trips: **Steadily increase**
- Max GP Comparison: **>24 MPH**
- Toll Paying Users: **>2,977 (avg. daily)**
- Monthly Revenue: **>\$187,000**
- **>76% Repeat Customer** → **>92% Revenue**



Year Over Year Comparison by Month

May 2013 May 2014

↑ 20% Users

Average Daily Toll Paying Trips 2,479 vehicles 2,977 vehicles

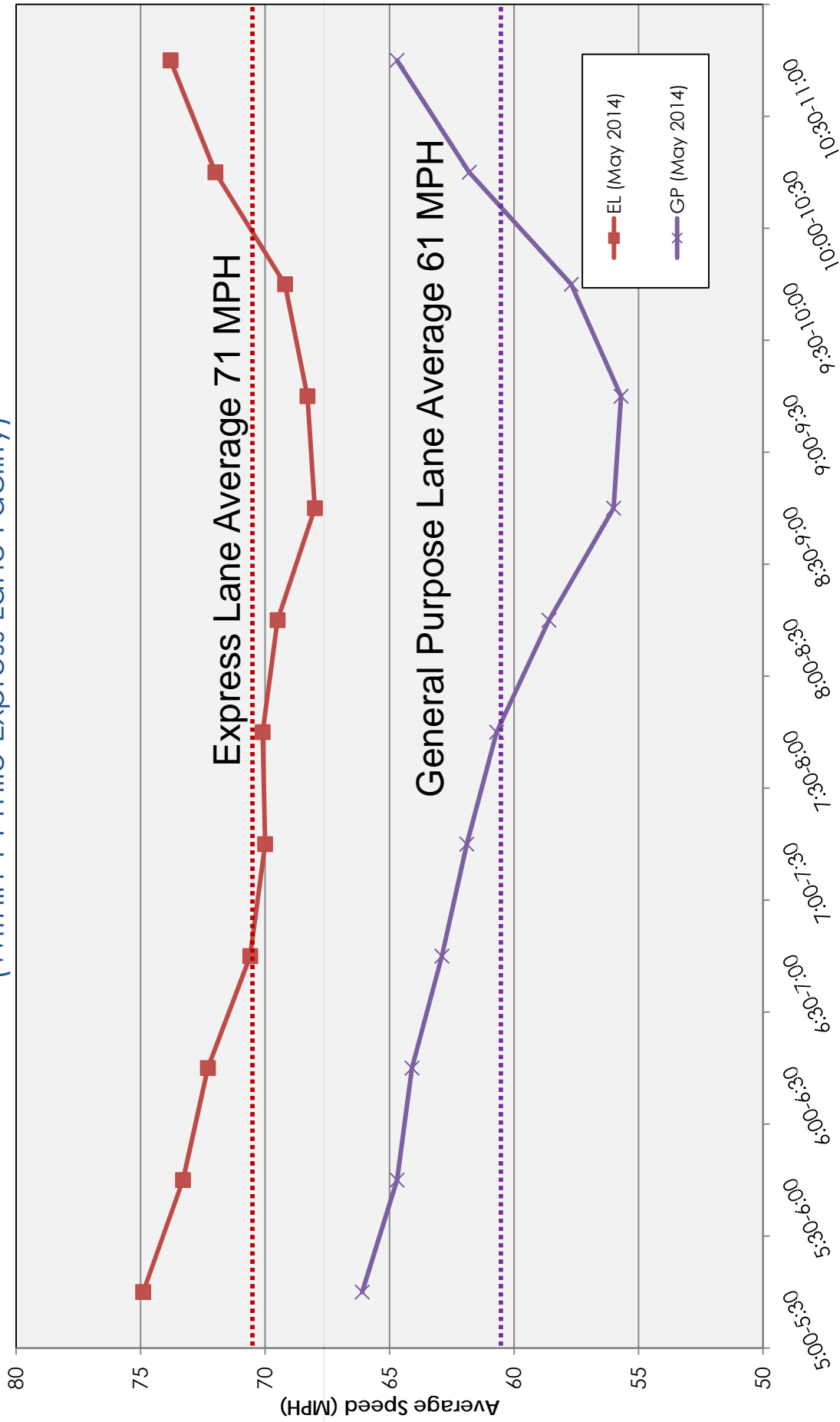
Average Daily Toll Revenue \$5,098 ↑ \$8,920

Average Toll Rate \$2.06 ↑ \$3.00

Average Peak Period Toll Rate
M-F 5AM to 11AM \$2.60 ↑ \$3.84

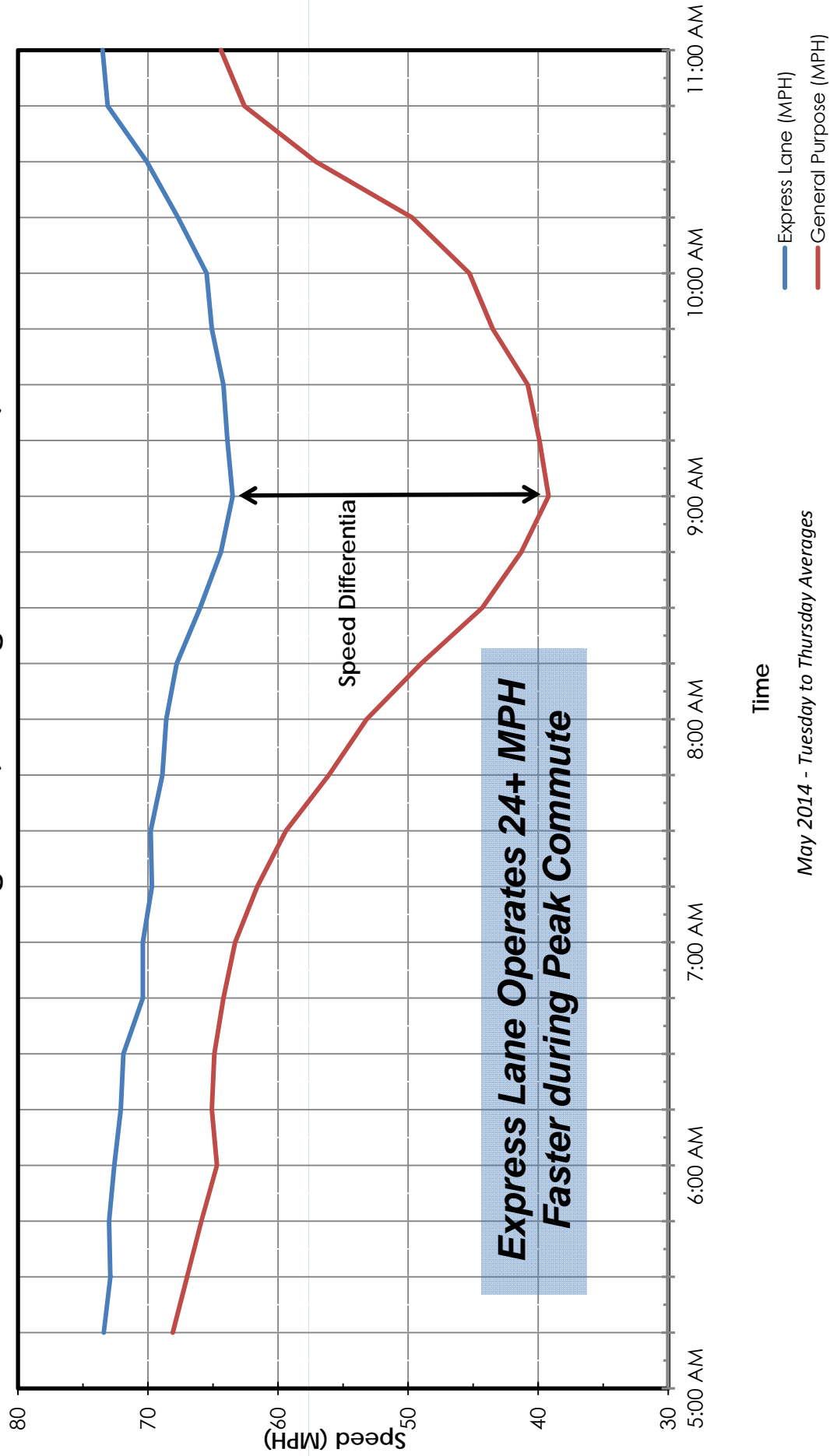
Average Peak Period Toll Rate
M-Th 5AM to 9AM \$2.62 ↑ \$3.75

May 2014 Average Travel Speed (Within 14-mile Express Lane Facility)



Average Daily Speed Curves During Peak Commute Period

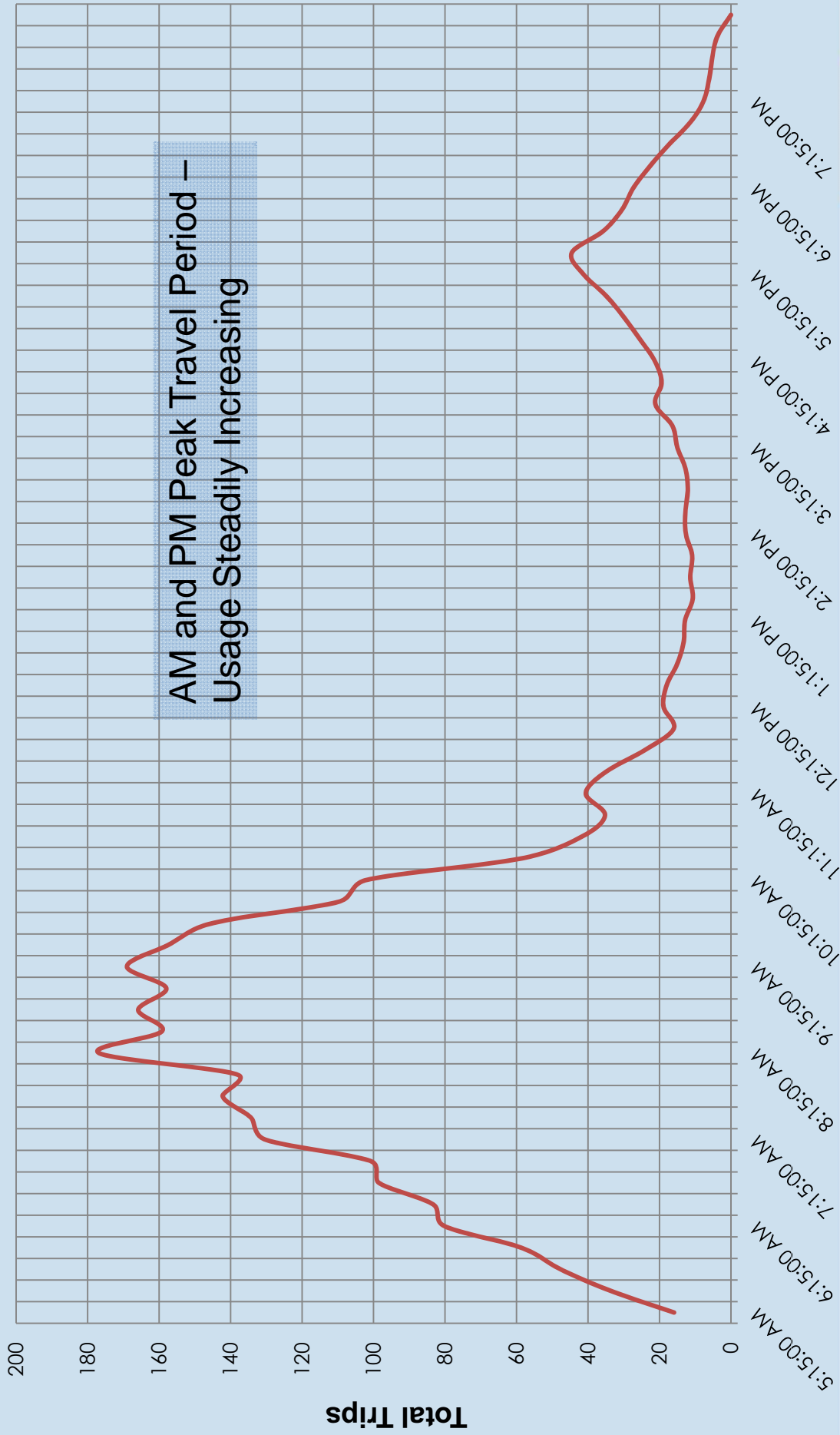
Central Segment (Washington to Mission)



Average Daily Toll Trips

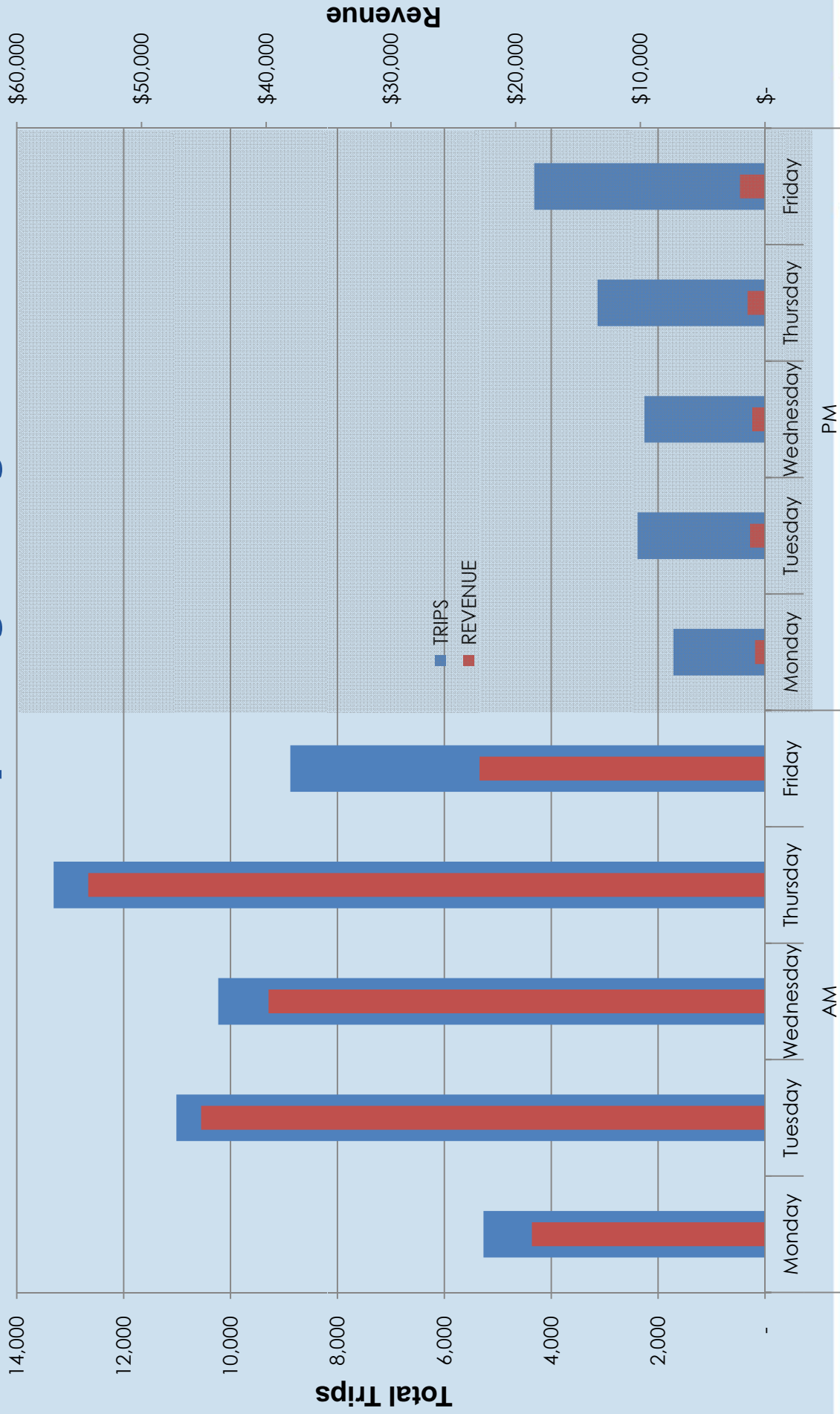
May 2014

(Tuesday to Thursday from 5 AM to 8 PM)



I-680 Sunol SMART Carpool Lane Joint Powers Authority

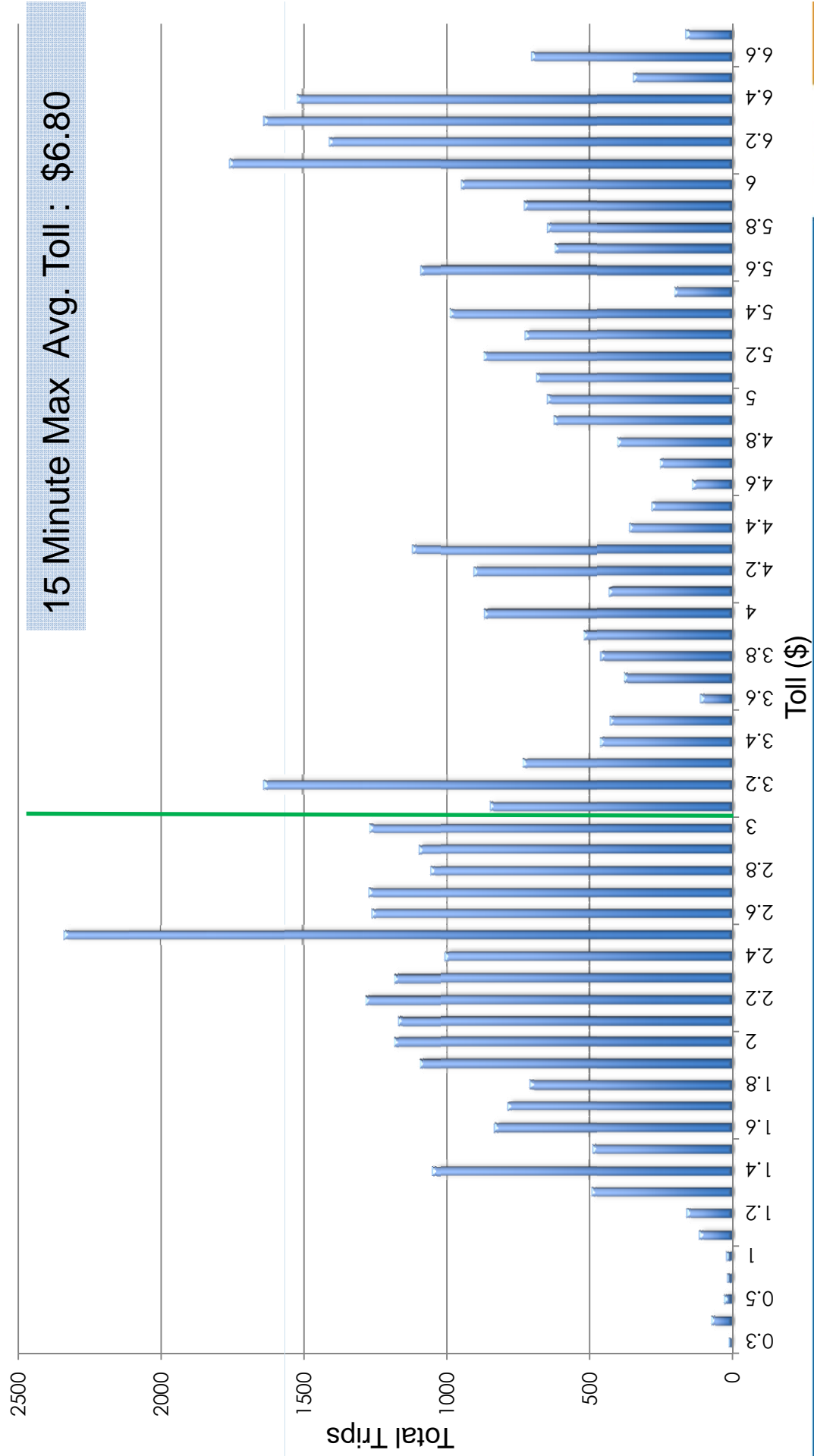
Revenue and Trips by Day of Week



I-680 Sunol SMART Carpool Lane Joint Powers Authority



May 2014 Toll Range During Peak Commute (5AM to 11AM)



Revenue (Estimated Gross vs. Forecasted)

Revenue in FY 2013/14
(July 2013 to May 2014)

Estimated Gross Revenue **\$1,493,900** **20%**

Forecasted* **\$1,243,400**

* Forecasted revenue for the full FY 13/14 is \$1,350,000

