



ALAMEDA COUNTY TRANSPORTATION COMMISSION  
Countywide Transit Plan and  
Integrated Community-Based  
Transportation Plans Update  
Final Scopes of Work

A presentation to the  
Planning, Policy and Legislation Committee (PPLC)  
September 9, 2013



## Overview

2

- Needs, Challenges and Opportunities
- Key Outcomes and Objectives
- Governance and Advisory Structure
- ACTAC Comments
- Scope of Work
- Proposed Schedule
- Actions Requested

COUNTYWIDE TRANSIT PLAN AND INTEGRATED COMMUNITY-BASED  
TRANSPORTATION PLANS UPDATE FINAL SCOPES OF WORK

## Needs | TRANSIT

3

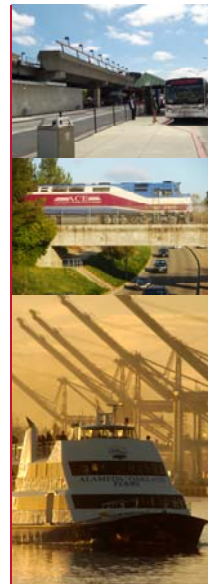
- Improving transit connectivity
- Addressing transit system expansion versus system maintenance and enhancement
- Providing rapid, high-quality service that is frequent and reliable
- Integrating with and facilitating land-use and economic development goals and objectives
- Ensuring financial sustainability
- Providing adequate capacity

COUNTYWIDE TRANSIT PLAN AND INTEGRATED COMMUNITY-BASED  
TRANSPORTATION PLANS UPDATE FINAL SCOPES OF WORK

## Challenges | TRANSIT

4

- Limited funding
- Lack of physical integration of services
- Multiple operators
- Diverse needs
- Identifying and aligning priorities



COUNTYWIDE TRANSIT PLAN AND INTEGRATED COMMUNITY-BASED  
TRANSPORTATION PLANS UPDATE FINAL SCOPES OF WORK

- Coordinate transit, land use and economic development priorities
- Improve coordination of fares and schedules
- Prioritize investments that improve connectivity and reduce operating costs
- Identify cost-effective strategies for providing Americans with Disabilities Act (ADA) paratransit service

COUNTYWIDE TRANSIT PLAN AND INTEGRATED COMMUNITY-BASED  
TRANSPORTATION PLANS UPDATE FINAL SCOPES OF WORK

- Use new technologies for the provision, management and use of transit services
- Build on the work of the Transit Sustainability Project, Inner East Bay Comprehensive Operations Analysis, BART Metro and Tri-City Transit Study



COUNTYWIDE TRANSIT PLAN AND INTEGRATED COMMUNITY-BASED  
TRANSPORTATION PLANS UPDATE FINAL SCOPES OF WORK

## Primary Objectives

TRANSIT

7

- Identify near- and long-term transit needs
  - Relationship to land-use and economic development goals and objectives
  - Congestion relief and other environmental needs
  - Expanding access and improving mobility for all
- Develop our 25-year Alameda County transit network vision
  - All transit modes: rail, bus, ferry and shuttles
  - Inter-regional, inter-city and local service
  - High-frequency network and connecting local routes
  - Roles of private and public shuttles

COUNTYWIDE TRANSIT PLAN AND INTEGRATED COMMUNITY-BASED  
TRANSPORTATION PLANS UPDATE FINAL SCOPES OF WORK

## Primary Objectives

TRANSIT

8

- Develop a near- and long-term strategy to implement the 25-year vision
  - Fiscally-constrained near- and long-term implementation strategy
  - Identifying funding priorities and potential funding sources



COUNTYWIDE TRANSIT PLAN AND INTEGRATED COMMUNITY-BASED  
TRANSPORTATION PLANS UPDATE FINAL SCOPES OF WORK

## Key Outcomes and Objectives

COMMUNITY-BASED  
TRANSPORTATION PLANS (CBTPs)

9

- Update five existing CBTPs in Alameda County:
  - Central Alameda County (Ashland and Cherryland, as well as portions of Hayward and South Hayward)
  - City of Alameda
  - West and South Berkeley
  - Central and East Oakland
  - West Oakland
- Update existing conditions
- Assess progress to date and current and future needs

COUNTYWIDE TRANSIT PLAN AND INTEGRATED COMMUNITY-BASED  
TRANSPORTATION PLANS UPDATE FINAL SCOPES OF WORK

## Key Outcomes and Objectives

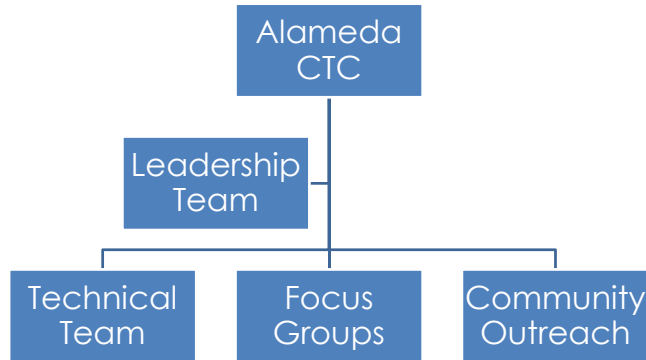
CBTPs

10

- Integrate CBTPs with Countywide Transit Plan
- Address transit costs for low-income households
- Develop and implement successful pilot programs
- Focus on integrated strategy and implementation



COUNTYWIDE TRANSIT PLAN AND INTEGRATED COMMUNITY-BASED  
TRANSPORTATION PLANS UPDATE FINAL SCOPES OF WORK



COUNTYWIDE TRANSIT PLAN AND INTEGRATED COMMUNITY-BASED TRANSPORTATION PLANS UPDATE FINAL SCOPES OF WORK

- Consider long-term needs for shuttle implementation and funding and the relationship of shuttles to park and ride and parking
- Consider the outcomes of on-going shuttle and transit feasibility studies underway in the County
- Consider the different roles transit will play in different areas
- Explore potential institutional and/or administrative structures and arrangements that could help us better meet needs
- Need to determine CBTP criteria

COUNTYWIDE TRANSIT PLAN AND INTEGRATED COMMUNITY-BASED TRANSPORTATION PLANS UPDATE FINAL SCOPES OF WORK

- Develop performance levels and standards for Lifeline transit service, especially service span and frequency
- Consider the link between bicycles and transit
- Performance measures should address safety for facilities that accommodate more than one mode
- Examine how auto congestion impacts transit level of service:
  - Develop measures so that negative impacts on transit operations can be identified and addressed
  - Include a process for cities and transit operators to collaborate

COUNTYWIDE TRANSIT PLAN AND INTEGRATED COMMUNITY-BASED  
TRANSPORTATION PLANS UPDATE FINAL SCOPES OF WORK

1. Inventory of existing plans, studies data and potential new technologies
2. Existing and future conditions and needs analysis
3. Vision, goals and objectives
4. Performance measures and standards for assessing transit performance and level of service
5. Initial recommendations for an integrated transit network in Alameda County
6. Policy framework and performance-based methodology for prioritizing corridors and transit investments
7. Final near- and long-term transit network recommendations

COUNTYWIDE TRANSIT PLAN AND INTEGRATED COMMUNITY-BASED  
TRANSPORTATION PLANS UPDATE FINAL SCOPES OF WORK

## Scope of Work | TRANSIT

15

8. Complementary ADA paratransit recommendations
9. Strategies for better agency coordination
10. Design guidelines and identification of transit supportive infrastructure improvements
11. Implementation and financial plan
12. Administrative, draft and final plan
13. Stakeholder input, governance and public outreach
14. Project management and coordination with other Countywide planning efforts

COUNTYWIDE TRANSIT PLAN AND INTEGRATED COMMUNITY-BASED  
TRANSPORTATION PLANS UPDATE FINAL SCOPES OF WORK

## Scope of Work | CBTPs

16

1. Inventory and status of existing CBTP implementation and completed projects and programs
2. Existing conditions and needs analysis
3. Development of an integrated CBTP for Alameda County
4. Strategy for reducing transit cost for low-income individuals
5. Implementation and financial plan
6. Administrative, draft and final plan
7. Stakeholder input, governance and public outreach
8. Project management and coordination with other Countywide planning efforts

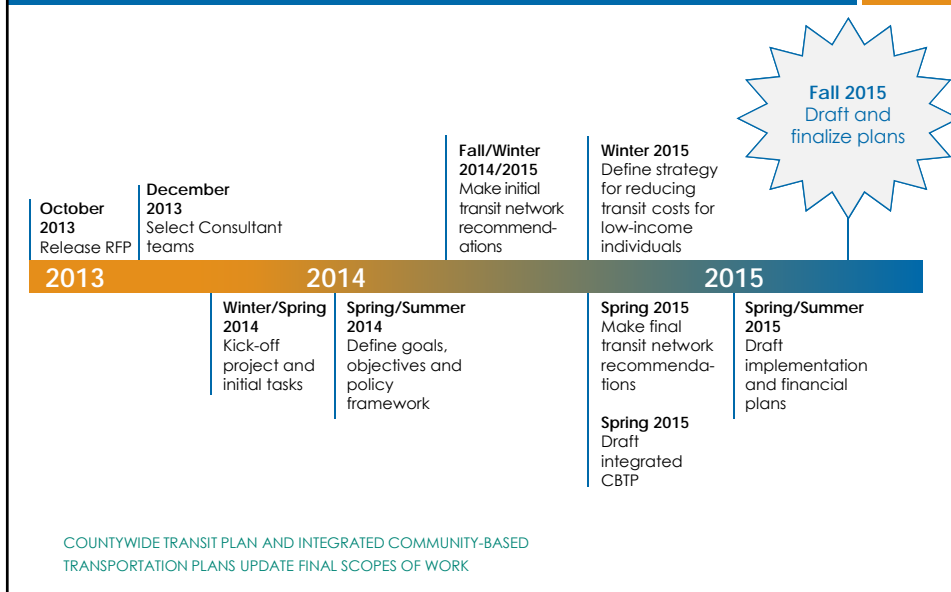
COUNTYWIDE TRANSIT PLAN AND INTEGRATED COMMUNITY-BASED  
TRANSPORTATION PLANS UPDATE FINAL SCOPES OF WORK



# Proposed Schedule

TRANSIT AND  
CBTPs

17



# Actions Requested

TRANSIT AND  
CBTPs

18

- Authorize the release of a Request for Proposals for development of a Countywide Transit Plan
- Authorize the release of a Request for Proposals for development of an Integrated Community-based Transportation Plans Update
- Authorize the Executive Director, or designee, to negotiate and execute professional services agreements with consultants for both plans



# We Moved!

19

1111 Broadway, Suite 800  
Oakland, CA 94607  
P | 510.208.7400



Alameda CTC is still conveniently located near the 12<sup>th</sup> Street/City Center BART station and many AC Transit bus lines, as well as car and bicycle parking.

