

I-880 Integrated Corridor Management Project (ICM)



September 4, 2014



METROPOLITAN TRANSPORTATION COMMISSION

MTC Projects

1. Freeway Performance Initiative (FPI)
2. Express Lanes Network (ELN)
3. Integrated Corridor Management (ICM)



Regional ICM Projects

In addition to I-880 ICM...

- US 101 Smart Corridor (San Mateo)
- I-80 Integrated Corridor Mobility (ACTC)

Statewide Projects

- I-15 Integrated Corridor Management (SANDAG)
- Connected Corridors (Caltrans D7)

...ICM is one tool in the ATM toolbox



METROPOLITAN TRANSPORTATION COMMISSION

3

Regional ICM Projects

	Freeway Gantries/ Variable Speed Advisory	Adaptive Ramp Metering	Transit Signal Priority	Arterial CCTV Cameras	Arterial Trailblazer Signs	Freeway CMS	Arterial Signal Coord.
I-880 ICM (MTC) \$14M				●	●		●
101 Smart Corridor (San Mateo) \$20M				●	●		●
I-80 ICM (ACTC) \$80M	●	●	●	●	●	●	●



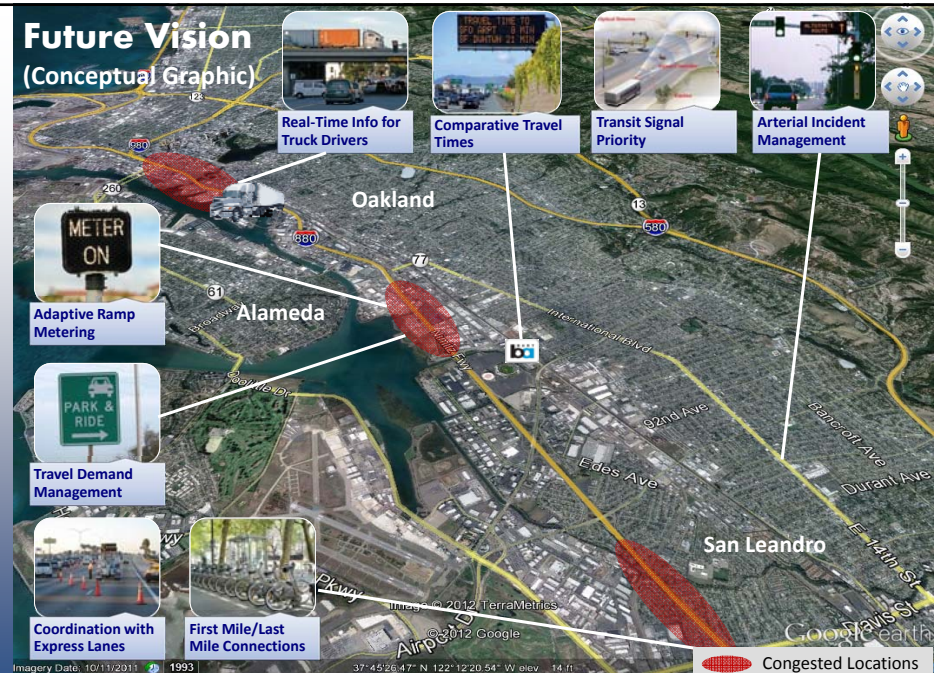
METROPOLITAN TRANSPORTATION COMMISSION

4

I-880 Corridor



Future Vision (Conceptual Graphic)



NB I-880 JSO Marina Blvd

- How to manage traffic that naturally diverts from the freeway due to major incidents?



METROPOLITAN TRANSPORTATION COMMISSION

7

I-880 North Segment Project Map



METROPOLITAN TRANSPORTATION COMMISSION

8

I-880 Arterial Incident Management Strategy

- 12 mile stretch from 980/880 to Davis St in Oakland & San Leandro
- Emphasis on arterial network
 - Traffic Signal Interconnection
 - Trailblazer signs, cameras, detectors
 - Communication Network
- PSR/PR (Approved 12/30/13)
- Caltrans Agreement for PS&E (Signed)
- Coordination with other ITS Projects



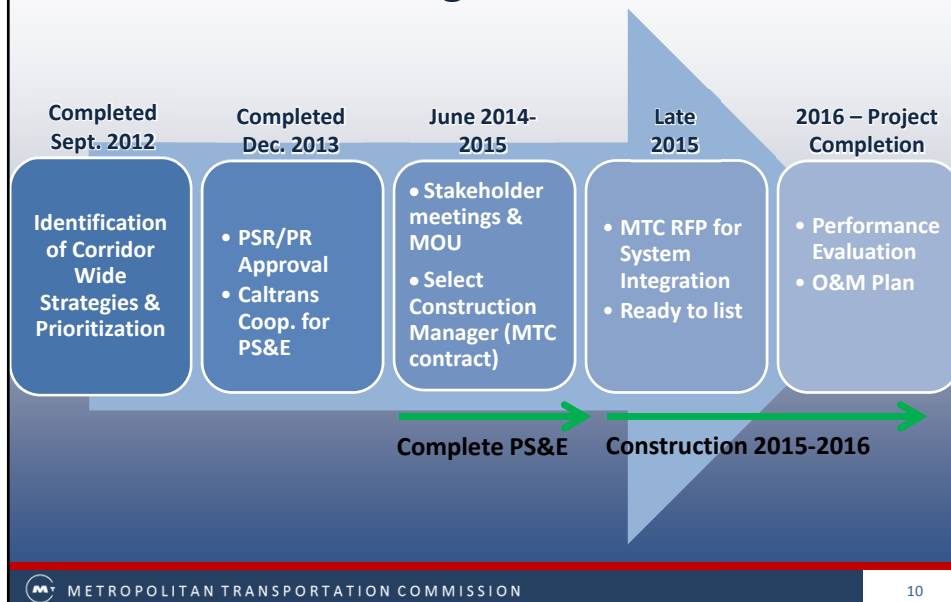
*Graphic
Not to Scale



METROPOLITAN TRANSPORTATION COMMISSION

9

I-880 ICM North Segment Schedule



METROPOLITAN TRANSPORTATION COMMISSION

10

Next Steps (I-880 North Segment PS&E)

- **Reconvene I-880 North Segment Stakeholders**
 - Individual stakeholder meetings
 - Develop public outreach materials
- **Develop MOU**
- **Construction Management**
- **System Integration RFP**
- **Performance Evaluation and O&M Planning**
- **Estimated Project Completion 2016**



METROPOLITAN TRANSPORTATION COMMISSION

11

I-880 ICM Stakeholders



METROPOLITAN TRANSPORTATION COMMISSION

12

Sarah Burnworth

Incident Management Program Coordinator

Metropolitan Transportation Commission

sburnworth@mtc.ca.gov 510-817-5947



