

I-680 Northbound Express Lane (HOV/Toll)

*Sunol Smart Carpool Lane
Joint Powers Authority*

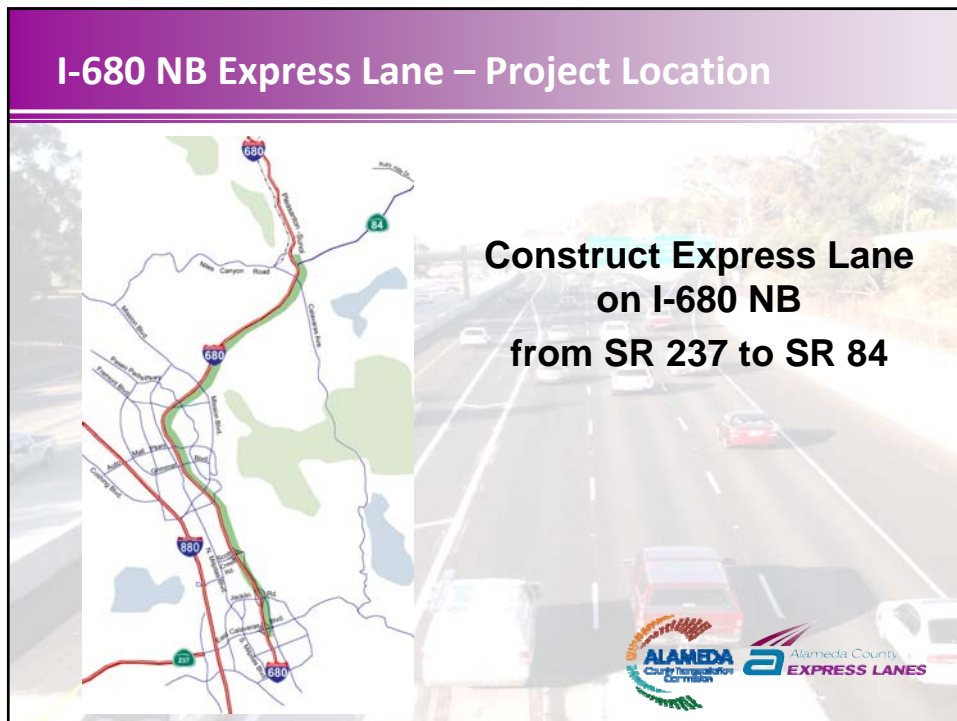
October 10, 2011



The map shows the I-680 corridor from Milpitas to the north. Key features include the Mission Peak Regional Preserve to the east, and various local roads such as Jackson Rd, Calaveras Blvd, and SR 237. The project area is highlighted in blue and green. Logos for Alameda County Transportation Commission and Alameda County Express Lanes are present, along with a large Interstate 680 shield.

I-680 NB Express Lane – Project Location

**Construct Express Lane
on I-680 NB
from SR 237 to SR 84**



The slide features a map on the left showing the project location on I-680 Northbound between SR 237 and SR 84. The project area is highlighted in red and green. On the right, an aerial view shows the multi-lane highway with traffic. Logos for Alameda County Transportation Commission and Alameda County Express Lanes are at the bottom.

I-680 NB Express Lane – Project Need & Purpose

NEED

- ❖ One of the Most Congested Corridors
- ❖ Congestion is Expected to Increase
- ❖ Frequent Congestion-related Accidents



PURPOSE

- ❖ Enhance Mobility
- ❖ Encourage Carpool/Transit Use
- ❖ Improve Travel Time/Reduce Delays
- ❖ Enhance Safety
- ❖ Generate Revenue



I-680 NB Express Lane – Project Benefits

Toll Facility Benefits:

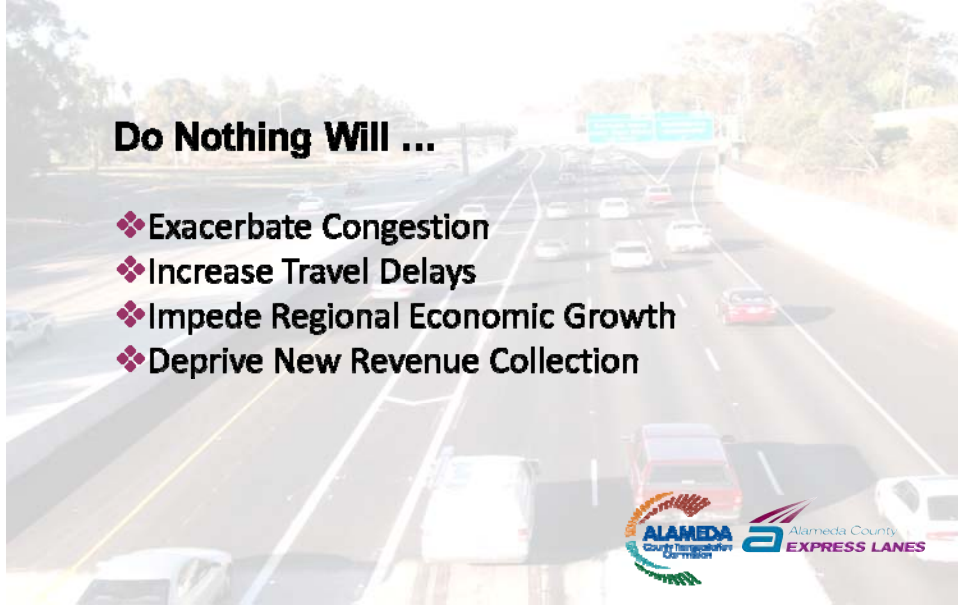
- ❖ Offsets the O&M Costs of Express Lane Facility
- ❖ Fits in MTC's Proposed Express Lane Network
- ❖ Provides New Revenue Source



No Build Conditions

Do Nothing Will ...

- ❖ Exacerbate Congestion
- ❖ Increase Travel Delays
- ❖ Impede Regional Economic Growth
- ❖ Deprive New Revenue Collection

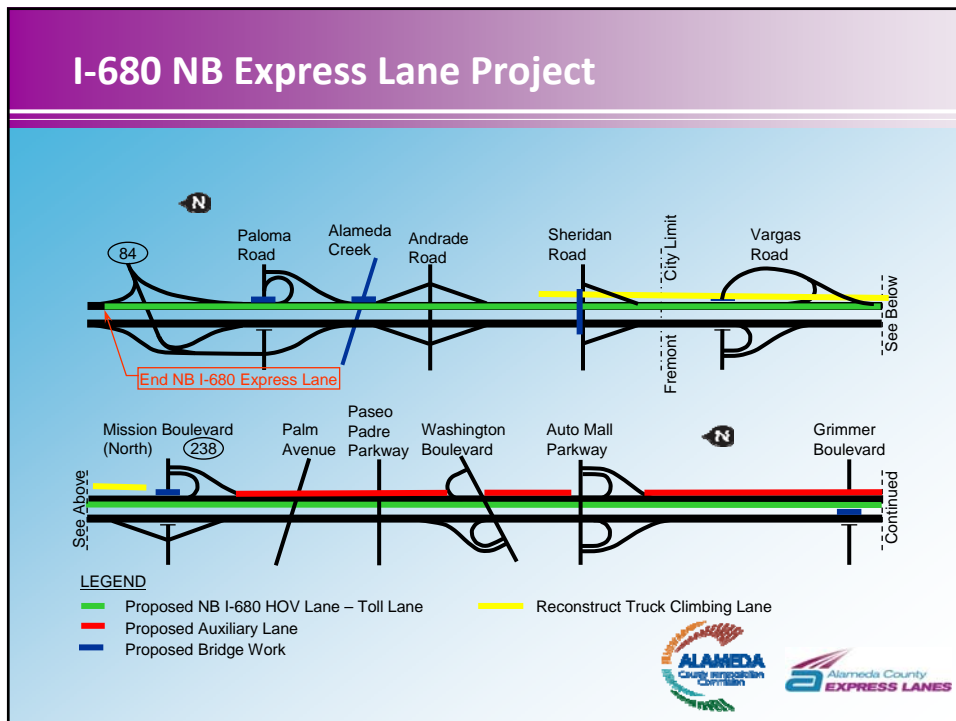
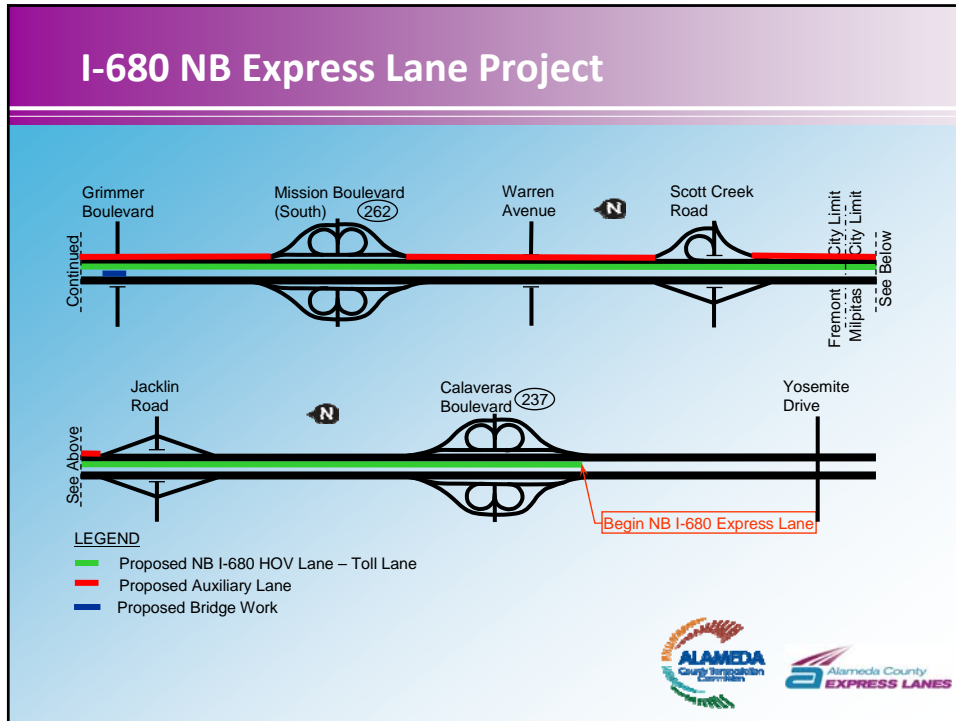


I-680 NB Express Lane – Project Scope

Project Improvements Will Require;

- ❖ Roadway Widening
- ❖ Bridge Widening
- ❖ Bridge Replacement
- ❖ Retaining Wall and Sound Wall Construction
- ❖ Toll Collection Lane Facilities
- ❖ New R/W Acquisition





I-680 NB Express Lane – Initial PA&ED Approach

Assumed Converting HOV Lane to Toll Lane

- ❖ In 2005, Caltrans Completed IS/EA for NB HOV Lane
- ❖ In early 2011, Began Processing Toll Conversion Project
 - Limited Studies & Widening for Toll Conversion
 - Complete Traffic Studies to Determine Tolling Limits
 - Complete a ND/FONSI for Conversion

However,

- ❖ In August 2011, a Court Writ Voided HOV Lane Project



I-680 NB Express Lane – Revised PA&ED Approach

- ❖ Perform Environmental Studies, Complete Technical Documents for HOV-Toll Lane Project
- ❖ Complete TOAR to Determine Limits, Traffic Impacts
- ❖ Complete a BO, an Final EIR/EA
- ❖ Takes 3 Years
- Process Would be Similar for an Interim Project



I-680 NB Express Lane – Revised Delivery Plan

- ❖ Complete PID & PA&ED Phases September 2014
- ❖ Begin Construction January 2016
- ❖ Open Toll Facility February 2018



I-680 NB Express Lane – Revised Delivery Plan

Next Steps:

1. Perform Environmental and Engineering Studies
2. Embark on a Robust Public Outreach Program
3. Employ Early Consultation with Regulatory Agencies
4. Complete an EIR/EA
5. Verify Agreements



Questions ...?

