

ALAMEDA COUNTY TRANSPORTATION COMMISSION
Goods Movement Collaborative
and Goods Movement Plan Update



A presentation by
Tess Lengyel, Deputy Director Planning and Policy
Michael Fischer, Cambridge Systematics Project Manager

Goods Movement Collaborative and Plan Update

- Update on Collaborative and Plan Actions
- Introduction of Consultant Team
- Overview of Implementation Schedule

Goods Movement Collaborative and Plan – An Integrated Approach

Goods Movement Collaborative

- Bring together partners/stakeholders
- Serve as organized structure for the Goods movement
 - Policy development
 - Planning in Alameda County and the region
 - Advocacy for goods movement projects and programs

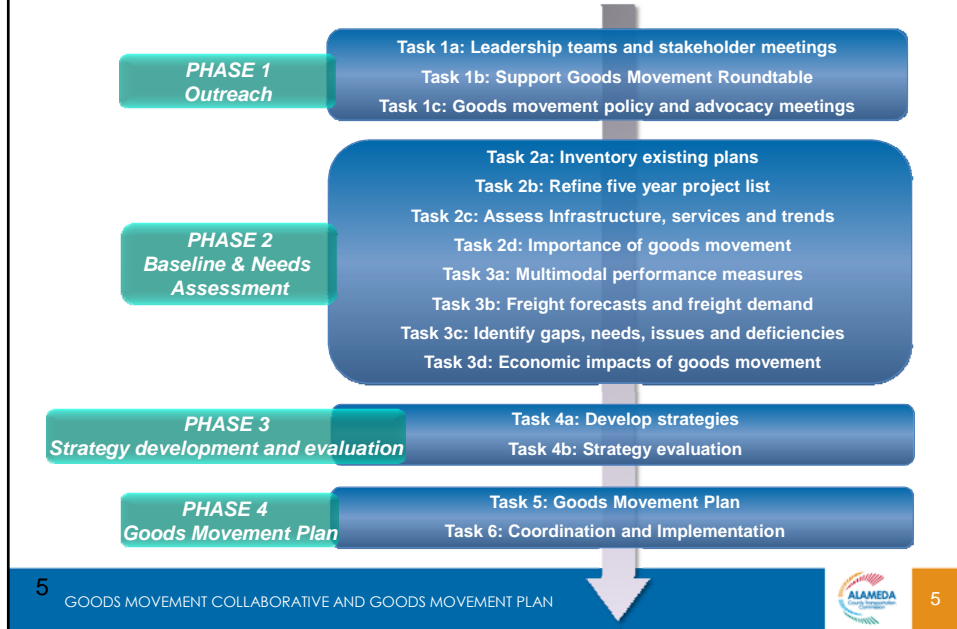
Goods Movement Plan

- Develop long-range vision and identify the following:
 - Needs and short- and long-term priorities
 - Benefits goods movement in Alameda County brings to the nation, state and region

Update on Collaborative and Plan Progress

- Completed inventory of Plans as first step in needs assessment
- Provided initial list to MTC/Caltrans for state plan process
- Selection of Consultant Team Complete and approved by Commission on October 24, 2013
- Consultant work commenced in October

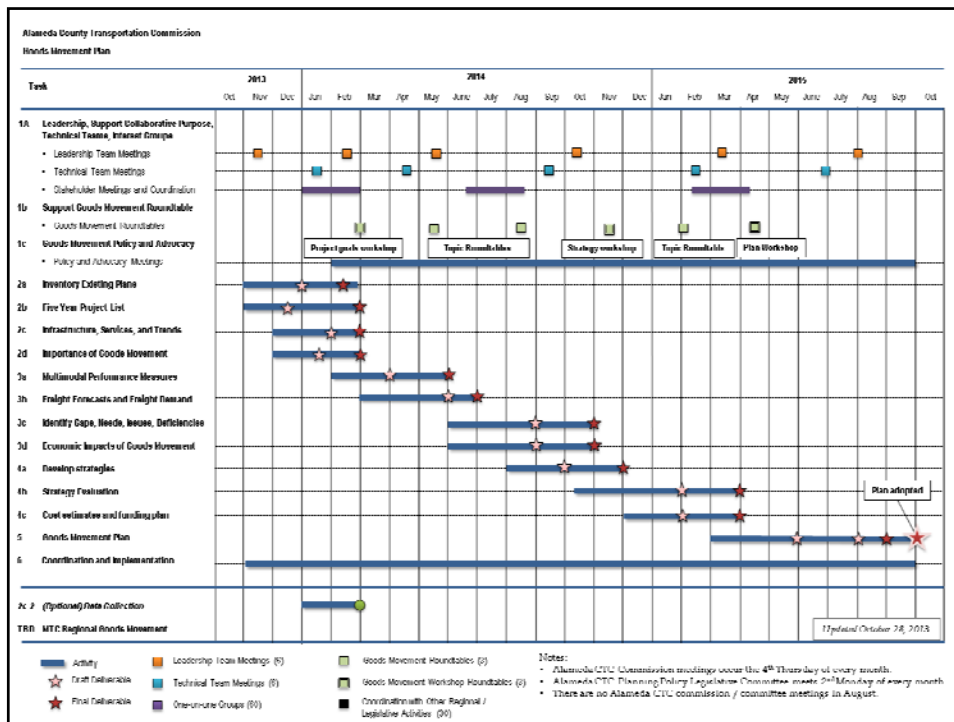
Project Approach



Collaborative Outreach

- Leadership Team – Guidance and advocacy
 - *Executive level from key partner agencies*
- Technical Team – technical review and input
 - *Staff from cities, transit agencies, MTC, BAAQMD, Port, Caltrans*
- Interest groups – meaningful and frequent input
 - *Private sector, economic development and business groups, environmental groups, public health groups, community groups*
- Roundtables – building stakeholder collaboration
 - *Representatives from interest groups*





Next Immediate Steps

- November 2013: Leadership Team Meeting
- November – December 2013: Establish technical team and identify stakeholders; begin baseline assessment
- January 2014: Commence outreach; prepare making the case materials



Questions?