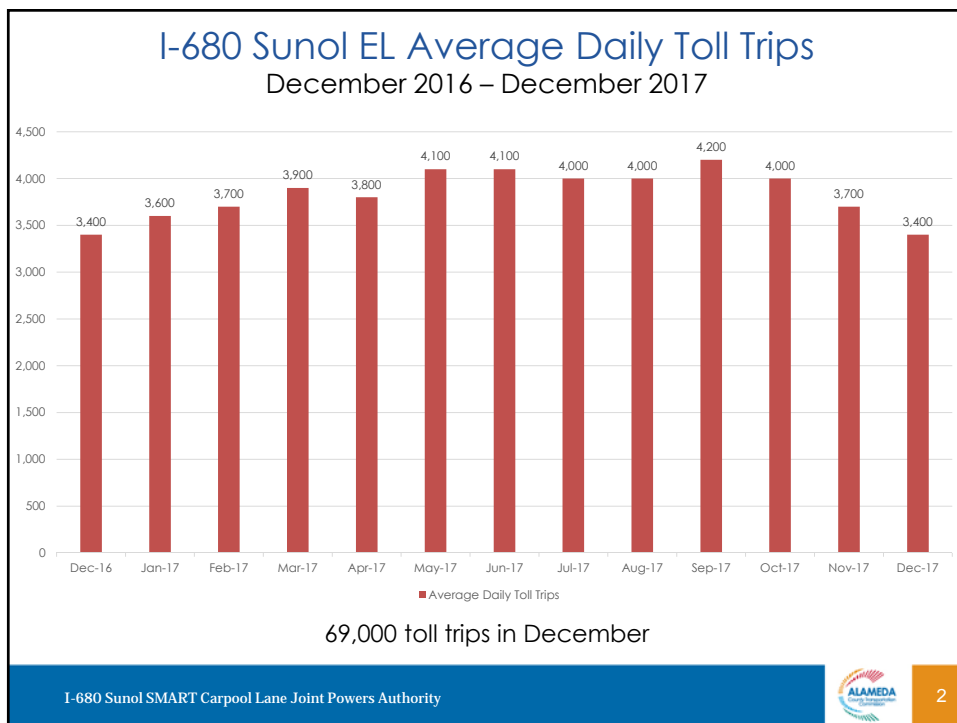


EXPRESS LANE
FASTRAK TOLL TO
 262 Mission \$1.50
 237 Calaveras \$1.75
 HOV 2+ NO TOLL

**I-680 Sunol Express Lane
 Monthly Operations Update**

A Presentation for the
 I-680 Sunol Smart Carpool Lane Joint Powers Authority (Sunol JPA)
 February 12, 2018



I-680 Sunol Corridor

Monday – Friday, December 2017
5 am - 11 am

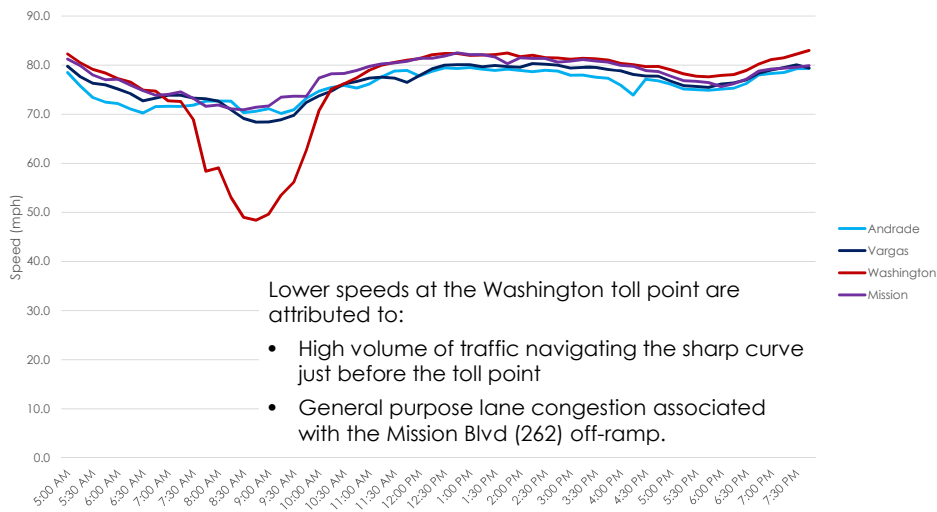
Toll Point Location	Express Lane Speed (mph)	Express Lane LOS
Andrade	73	B
Vargas	73	B
Washington	68	B
Mission	75	A

The Central Segment from Washington Blvd to South Mission Blvd (SR 262) is generally the most congested portion of the corridor.



I-680 Sunol Corridor Average Speed Graph

Monday-Friday, December 2017

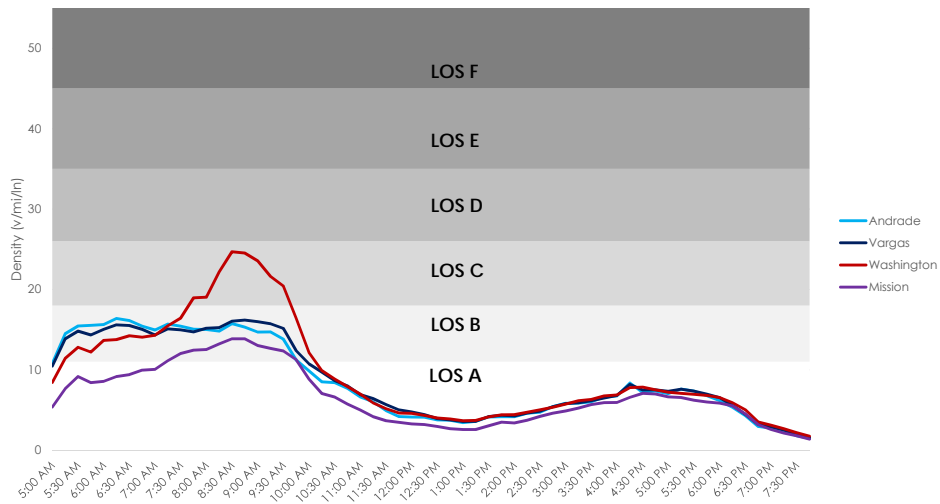


Lower speeds at the Washington toll point are attributed to:

- High volume of traffic navigating the sharp curve just before the toll point
- General purpose lane congestion associated with the Mission Blvd (262) off-ramp.



I-680 Sunol Corridor Average Density Graph Monday-Friday, December 2017



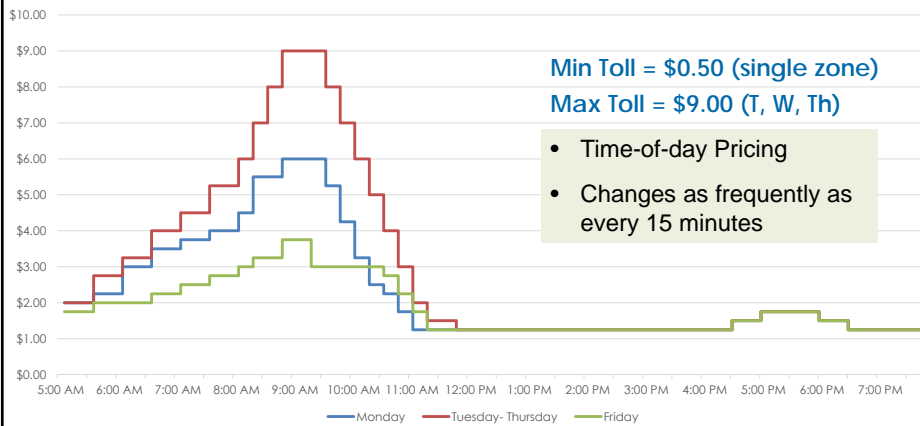
I-680 Sunol SMART Carpool Lane Joint Powers Authority



5

I-680 Sunol EL Static Toll Rate Full Corridor Travel, December 2017

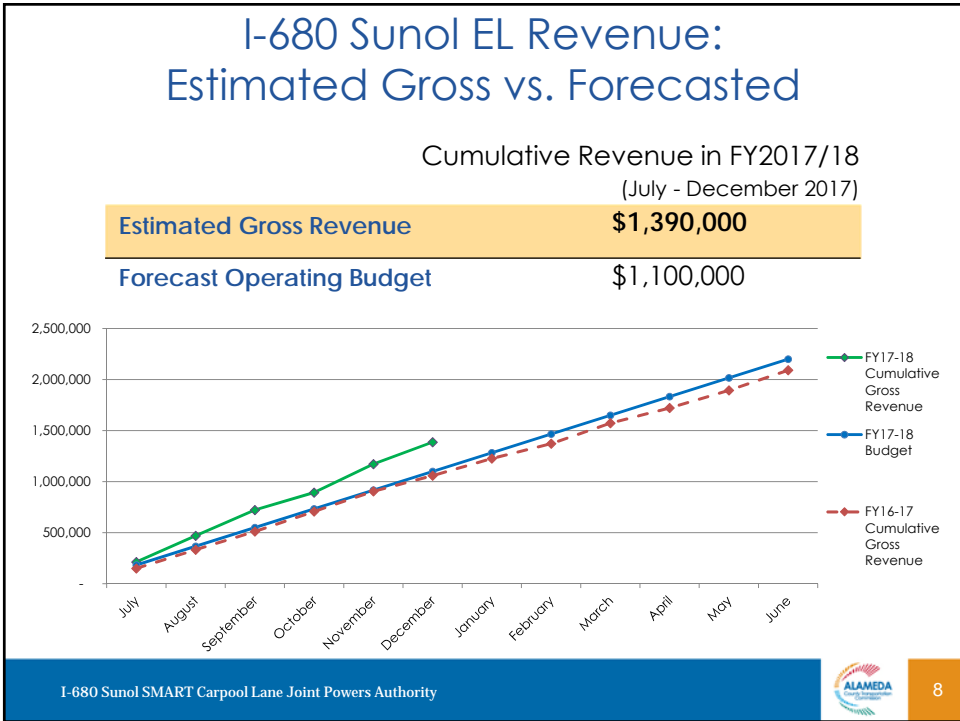
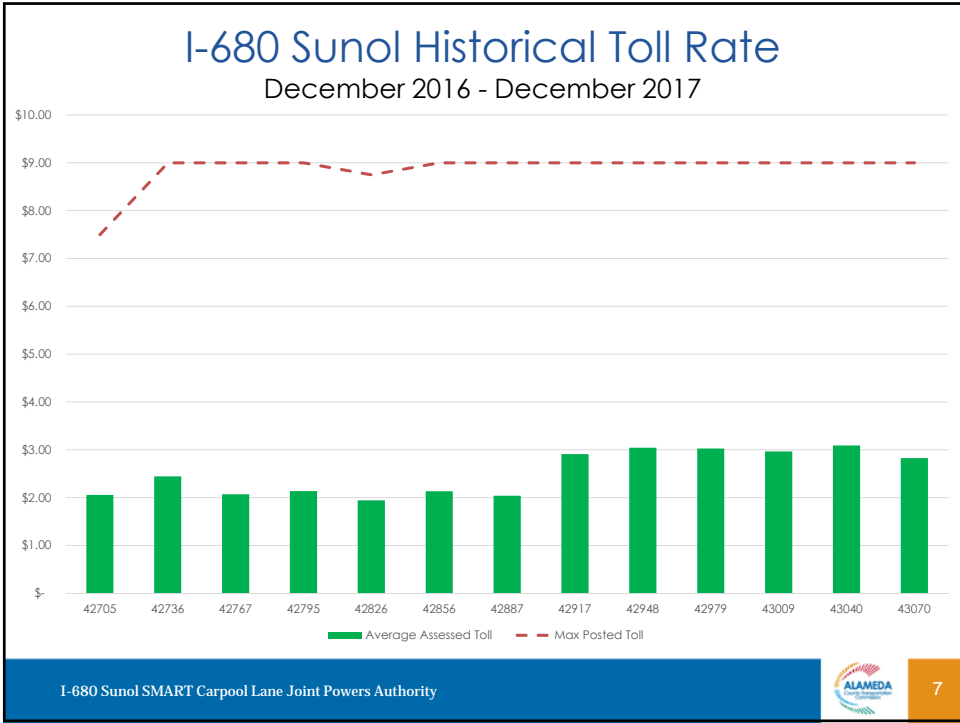
Toll Trips	69,000
Average Assessed Toll	\$2.83

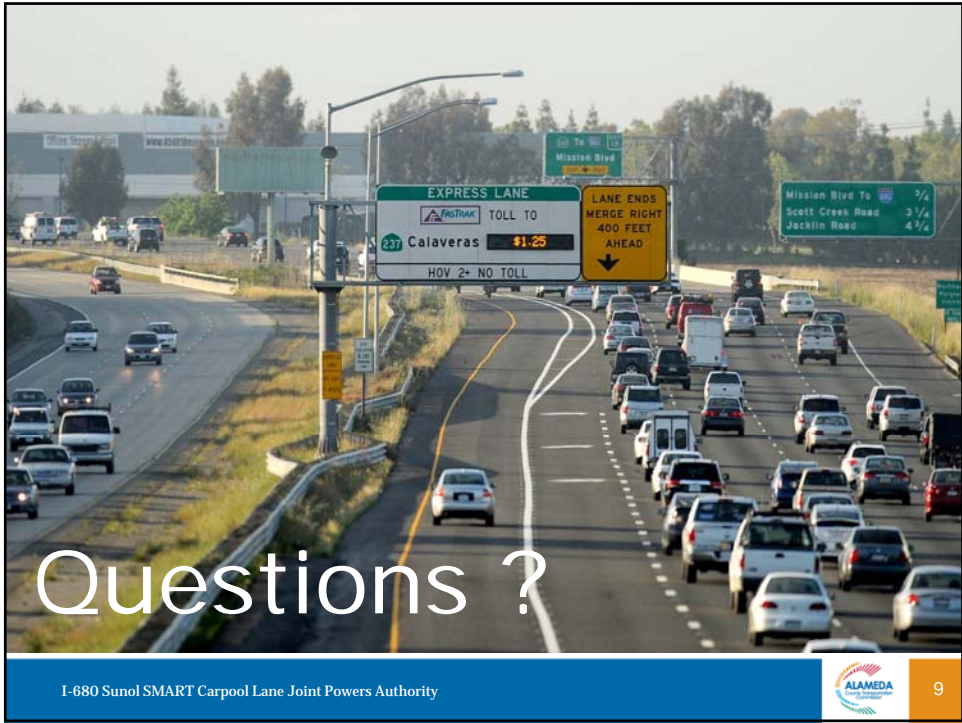


I-680 Sunol SMART Carpool Lane Joint Powers Authority



6





This page intentionally left blank