



Niles Canyon Trail

Presentation by Supervisor Richard Valle

Alameda County Transportation Commission | July 10, 2017

Niles Canyon

Many historic, cultural, and environmental resources

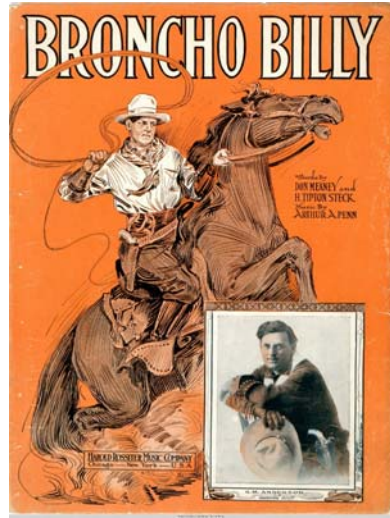
Bike accidents

Major gap between tri-cities and tri-valley regions

Trail gap closure identified in the EBRPD Master Plan as well as the Alameda County Bike/Ped Plan



Charlie Chaplin

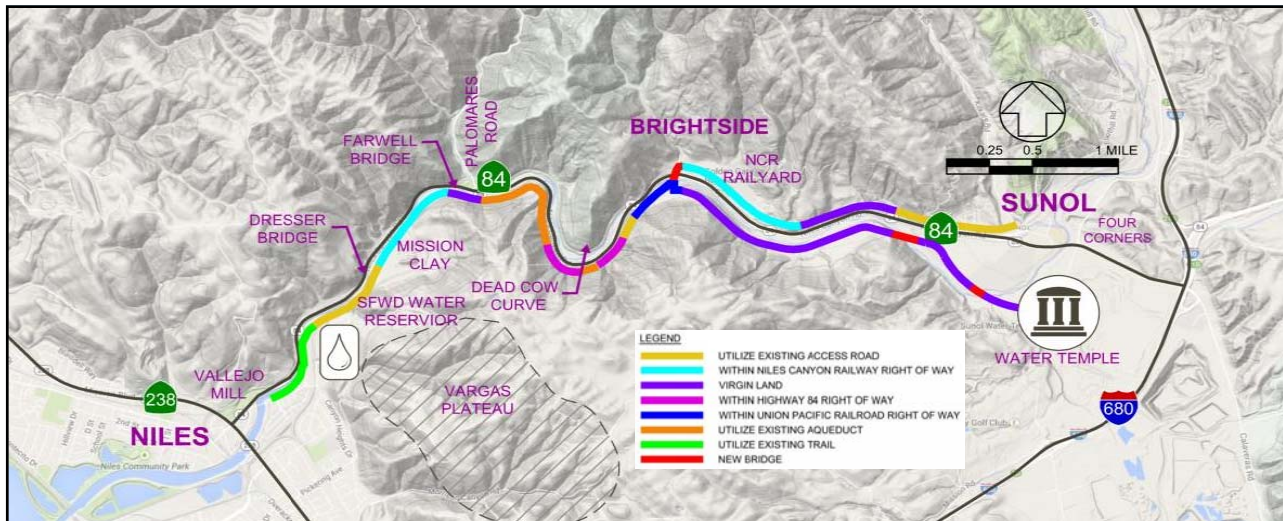
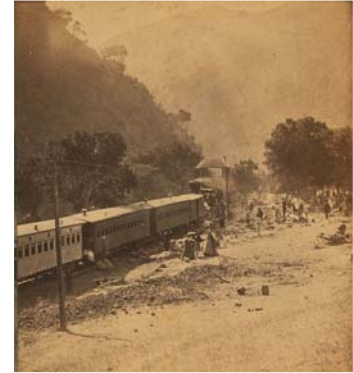


Broncho Billy

Niles Canyon Railway

Christmas tradition -
Train of Lights

Transcontinental Railroad -
View from Farwell, CA in 1866



Feasibility Study – Niles to Sunol Multi-Use Trail

6 mile-long, 10 feet wide, paved pathway from Niles to the Town of Sunol
3 potential trail options were identified
North Canyon Trail; South Canyon Trail; Rails with Trails

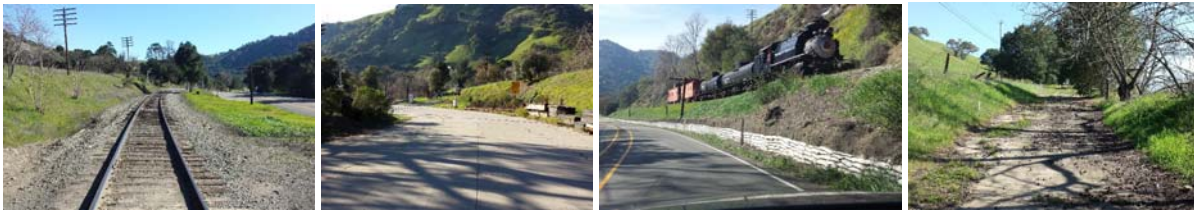
Project Study Report

Completed in April 2017

Report identified a preferred alternative – North Canyon Trail Option

Based on assessment of user experience, impact to environmental and historical resources, and cost to implement

The PSR recommends a phased trail development and provides more detailed engineering for preferred alignment than the Feasibility Study



Niles Canyon Stroll & Roll

October 11, 2015

Fremont Police Department estimated 10,000 participants attended
 Most received comment: **Build the trail and hold events like this until it's built!**



NILES CANYON STROLL & ROLL

**SEPT 30
2017**



**6 AM to
12 PM**

Bike, walk, or run through Niles Canyon without any vehicle traffic!



(510) 272-6692

www.84strollroll.com

