



East Bay Regional Conservation Investment Strategy (RCIS)

Regional Advance Mitigation Planning (RAMP)

Alameda County Technical Advisory Committee



Liz O'Donoghue
The Nature Conservancy

October 5, 2017



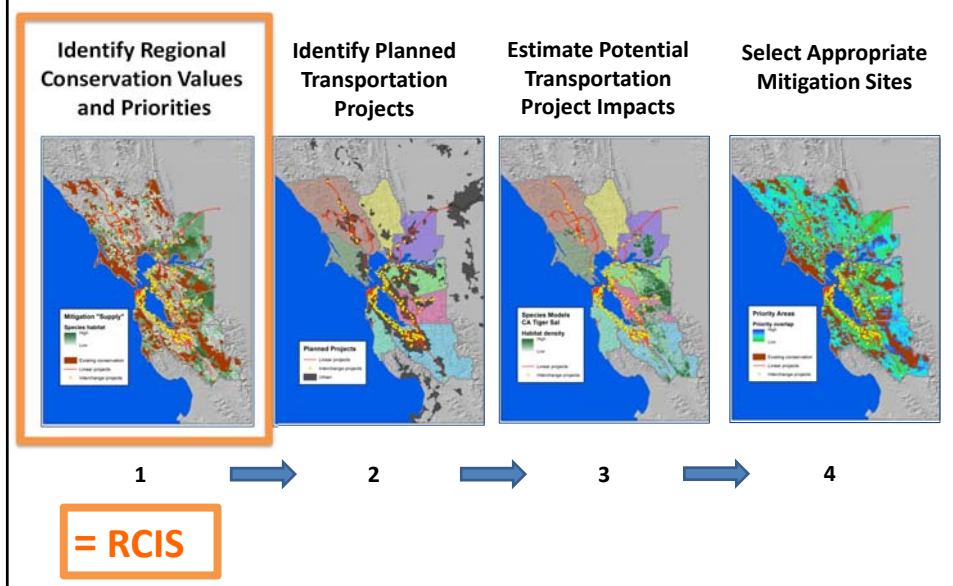


Regional Advance Mitigation Planning

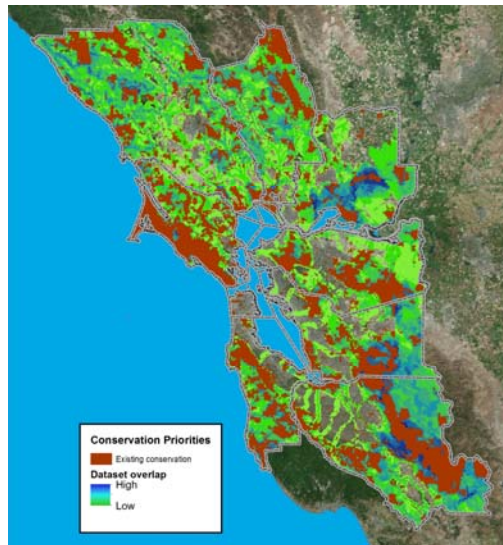
■ Dual Goals:

- Achieve meaningful conservation outcomes
- Expedite infrastructure project delivery

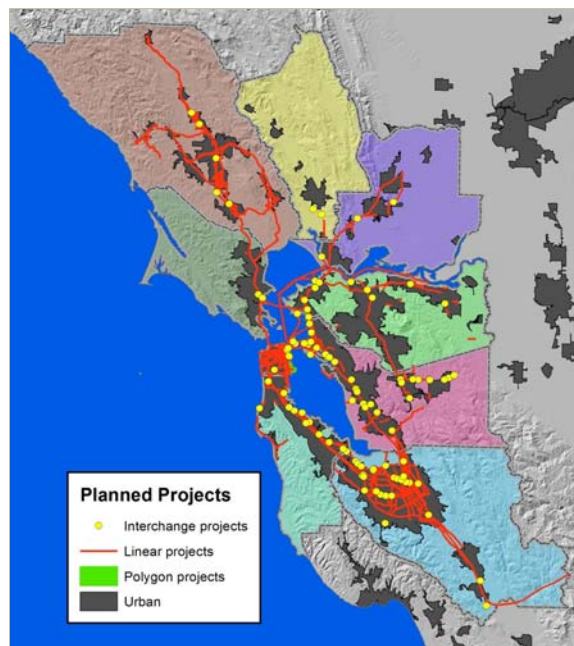
RAMP Planning Methodology

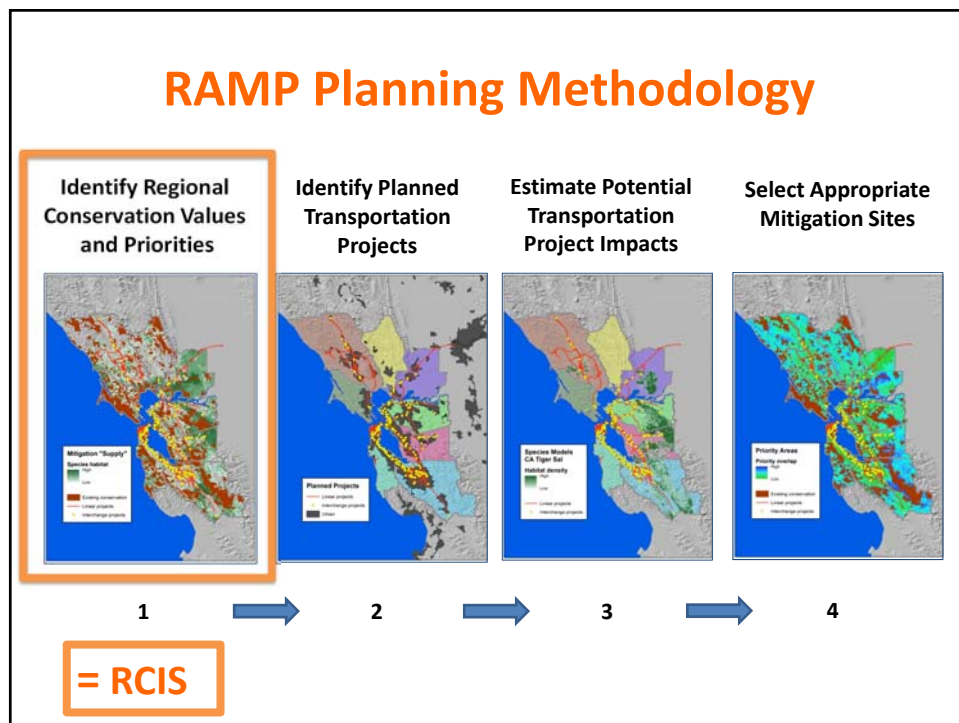
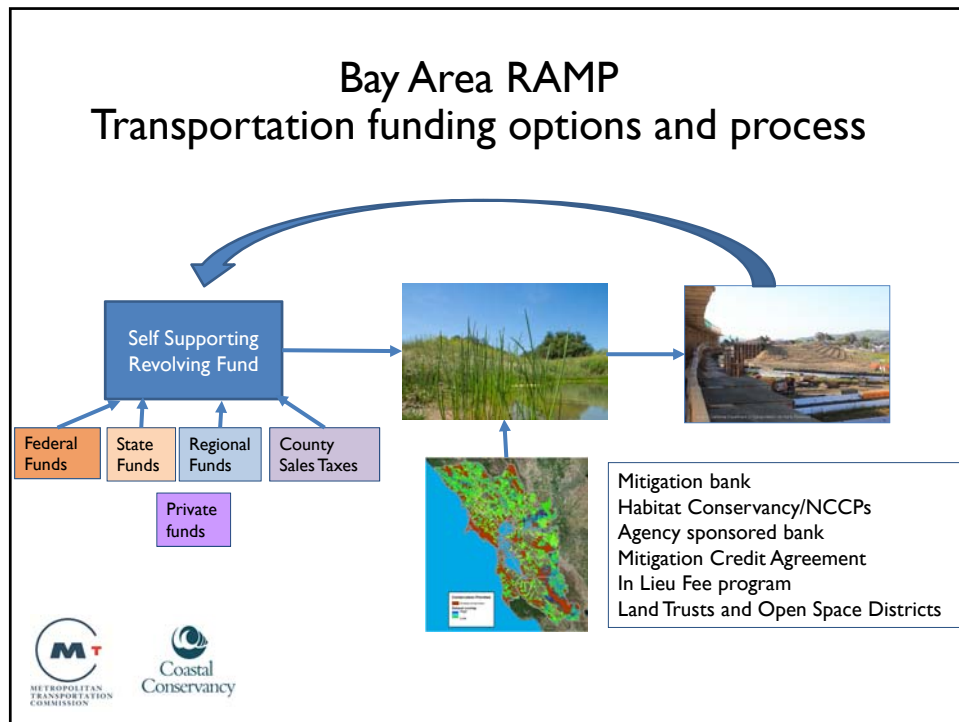


Regional Conservation Assessment



Regional Transportation Assessment





New law: AB 2087

- Encourages *Regional Conservation Investment Strategies*
- Enables Mitigation Credit Agreements: advance mitigation
- Bay Area Pilots: Santa Clara and East Bay



AB 2087 – Regional Conservation Investment Strategies

- Establishes goals and content of an RCIS
- Identifies conservation actions to support the RCIS
 - Protect, restore, enhance
- Enables Mitigation Credit Agreements (MCA)
- Outlines process for obtaining MCAs when entities invest in conservation consistent with an RCIS
- Provides assurances for RAMP investments



East Bay RCIS

- **Goal:** Strategy to inform science-based conservation actions to advance conservation priorities and enable advance mitigation
- Consistent with habitat conservation plans and approved recovery plans
- Voluntary, non-binding and led by public agencies
- Includes habitat connectivity, climate adaptation

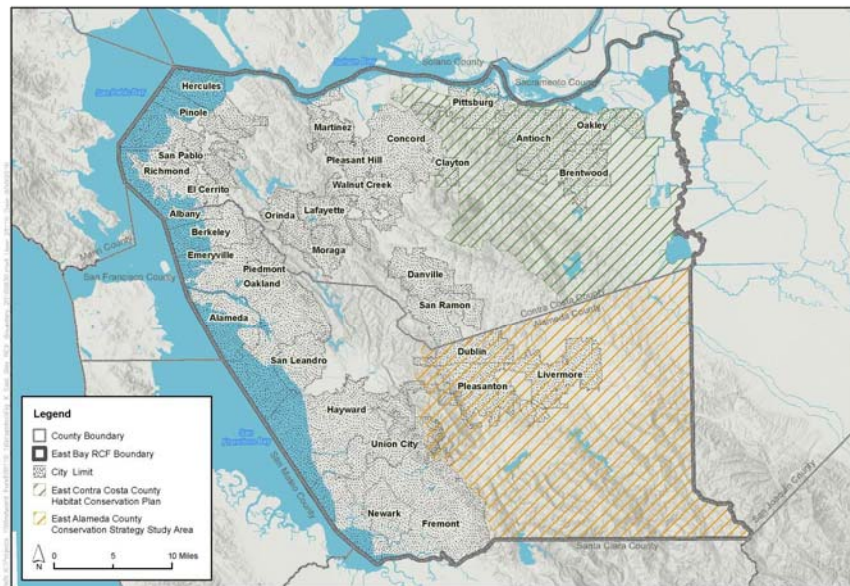


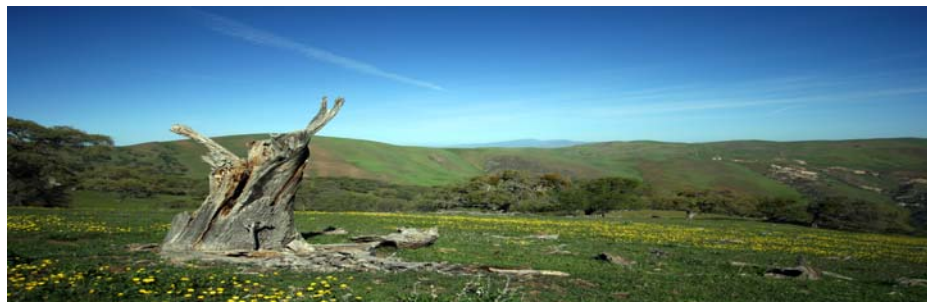
Figure X
East Bay RCF Boundary

RCIS Project Team and Engagement

Core Team:



Stakeholder Advisors:



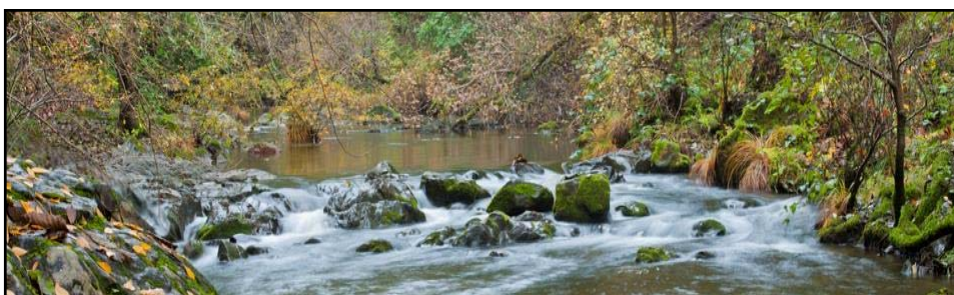
RCIS Outline

- Chapter 1. Introduction
- Chapter 2. Environmental Setting
- Chapter 3. Conservation Strategy
- Chapter 4. Implementation Strategy
- Chapter 5. References
- Appendices



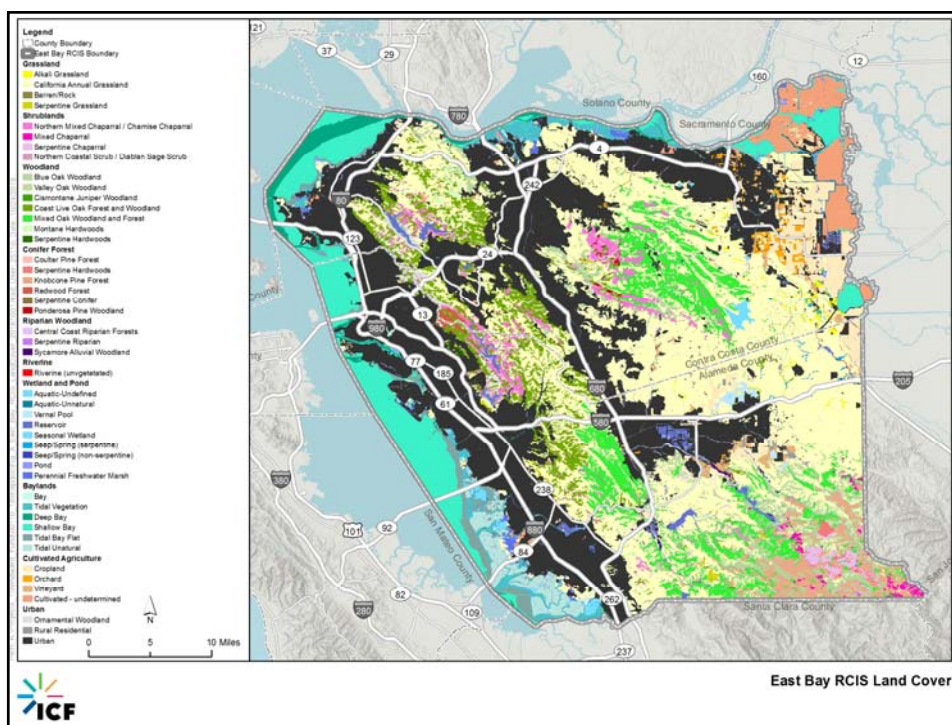
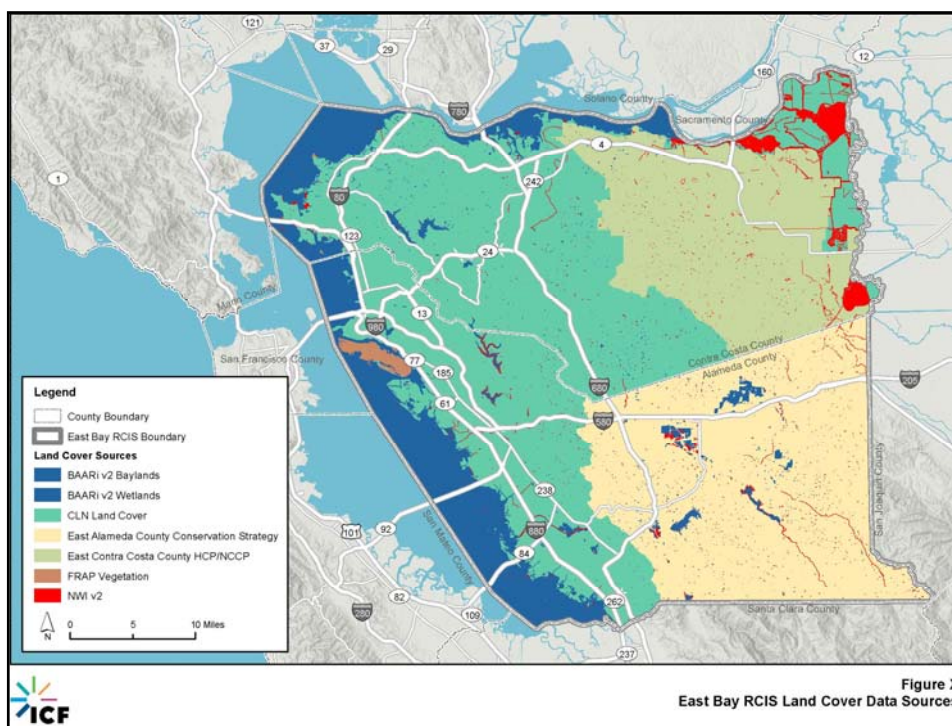
RCIS Focal Species

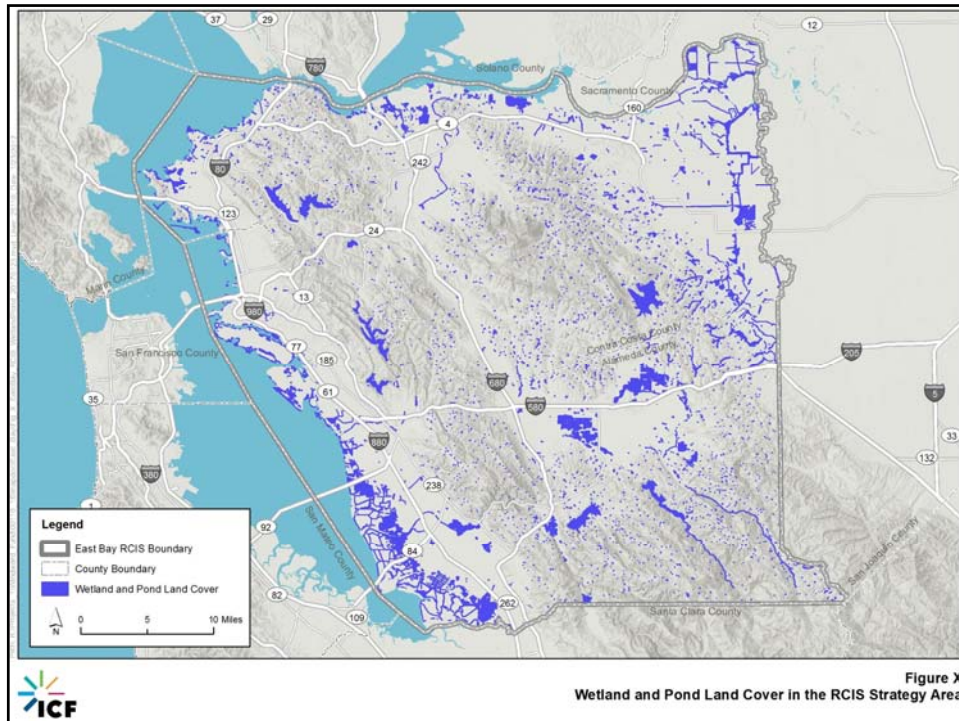
- Species that could require mitigation
- Other species of conservation importance
- Approx. 25 fish/wildlife species
- Approx. 25 plant species



RCIS Natural Communities Analysis

- **Step 1.** Identify land cover in the region
- **Step 2.** Review/update urban and cultivated agriculture
- **Step 3.** Incorporate aquatic resources





RCIS Conservation Actions

- Conservation value analysis
- Focal species models, land cover, connectivity, adjacency to protected lands, and other environmental benefits
- Preservation, enhancement, restoration, stewardship



RCIS Application:

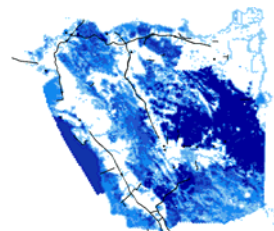
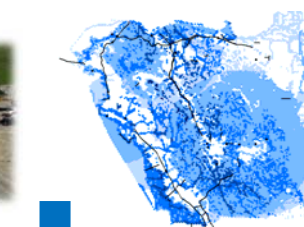
Our Focus: Transportation Mitigation

- Transportation Impacts Analysis to forecast potential mitigation needs
- RCIS guides conservation investments to secure mitigation credit
- Included in MTC's Plan Bay Area 2040

Other applications

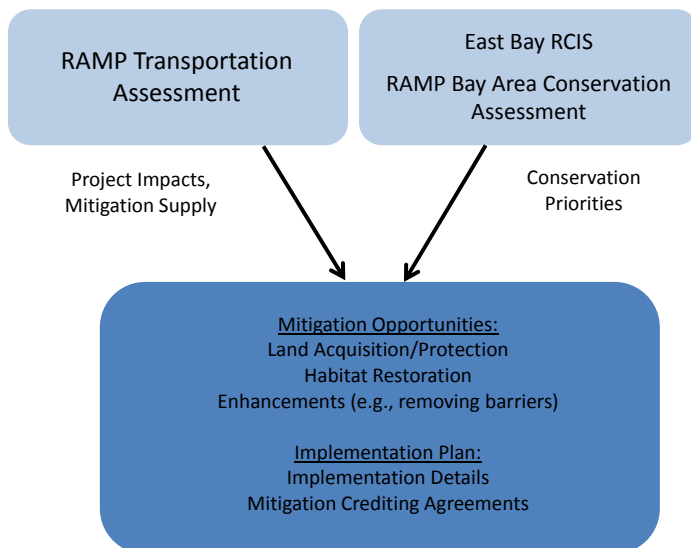
- Mitigation for public infrastructure projects like energy, water, and housing
- Credit for enhancement projects
- Advise for mitigation for private infrastructure projects

East Bay Subregional Assessment: Putting the Pieces Together

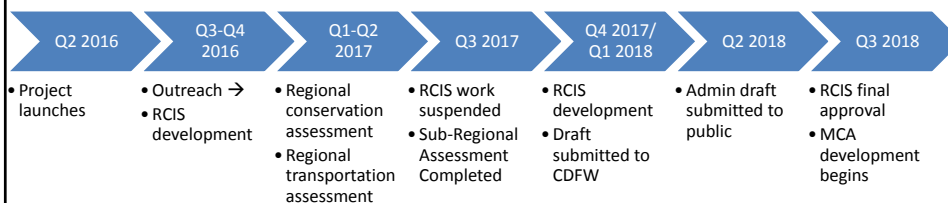


- Match conservation actions with mitigation demand
- Guide implementation
- Tool for transportation agencies

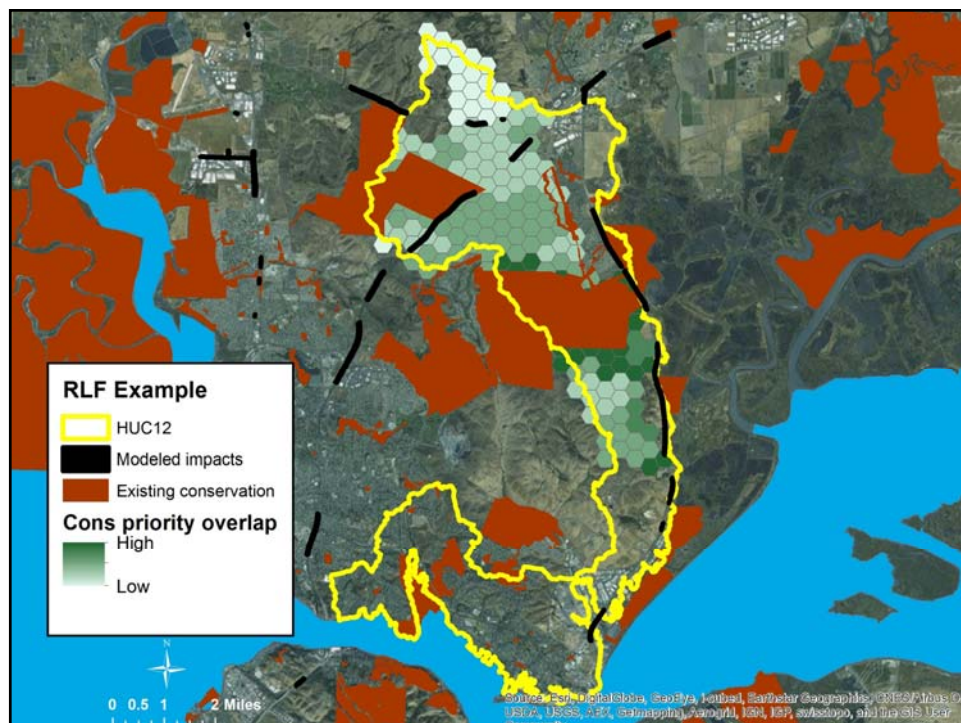
East Bay Subregional Assessment



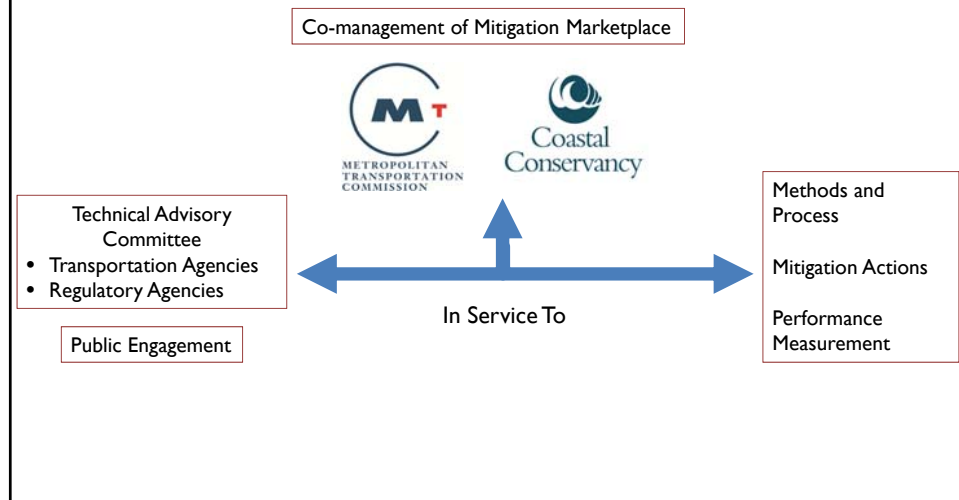
RCIS Timeline



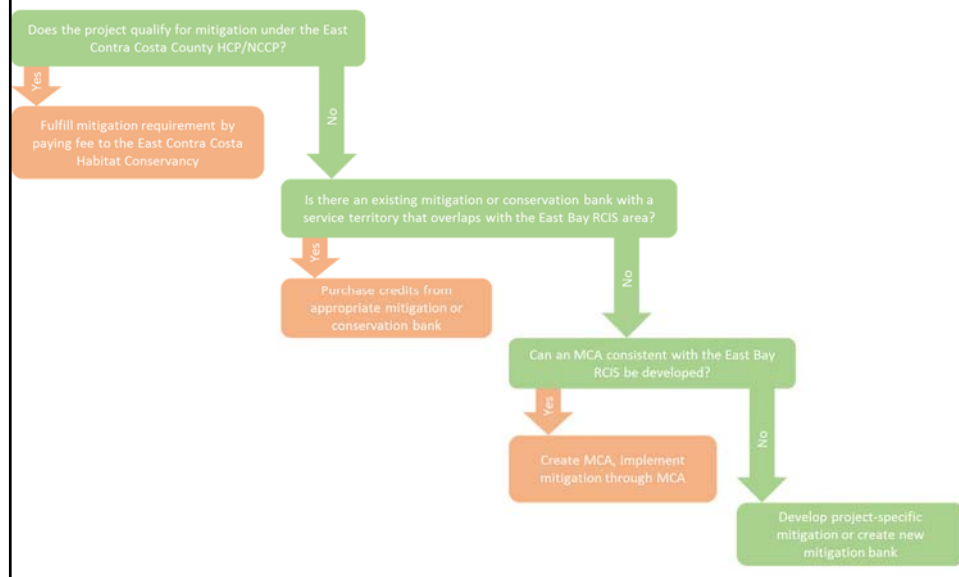
Questions?

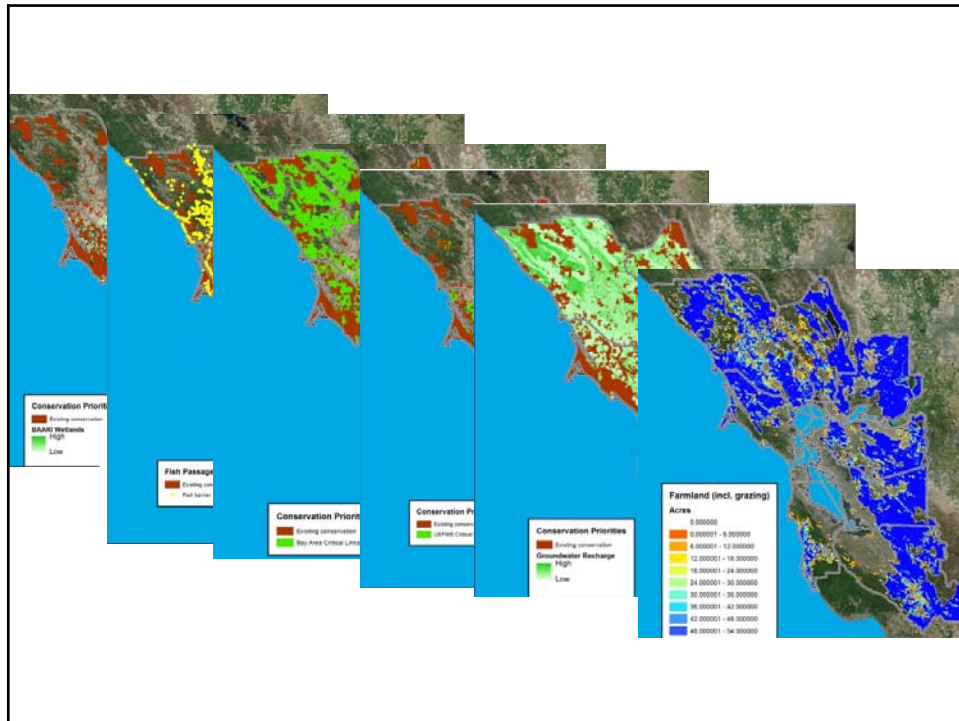


Bay Area RAMP Organization and Administration

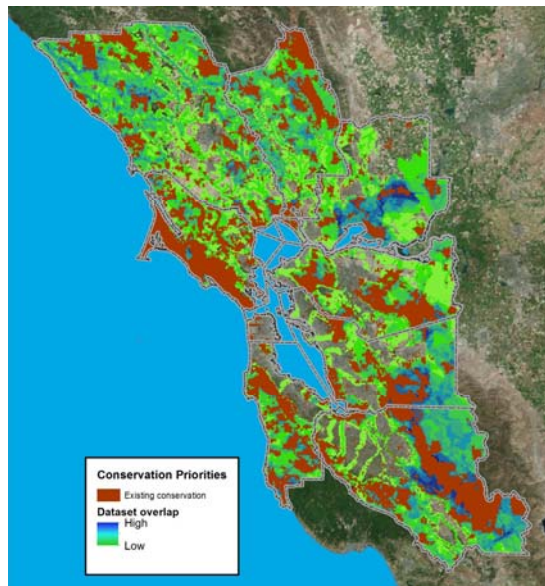


Identifying Mitigation Opportunities





Regional Conservation Assessment



This page intentionally left blank