

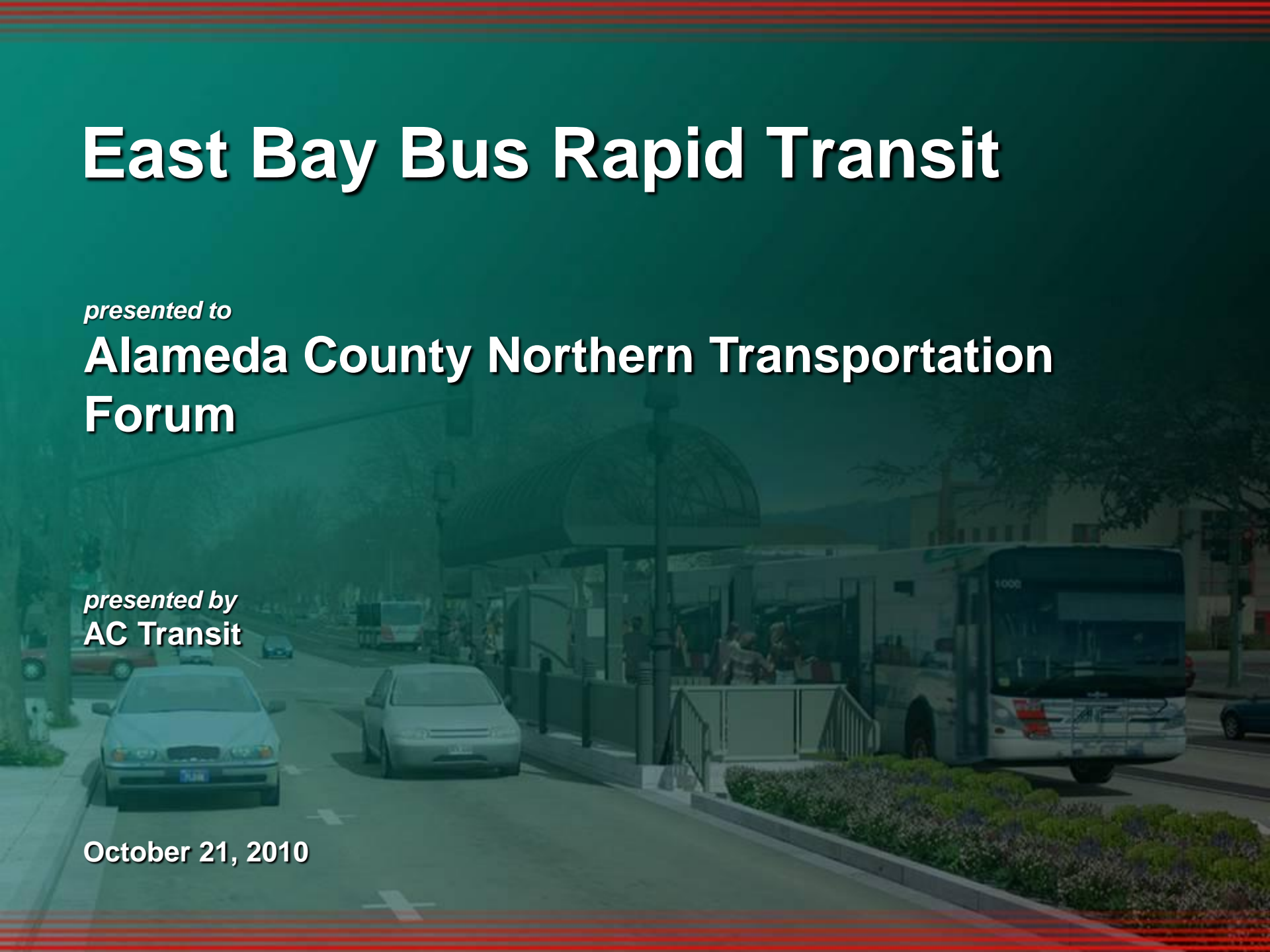
East Bay Bus Rapid Transit

presented to

Alameda County Northern Transportation Forum

presented by
AC Transit

October 21, 2010

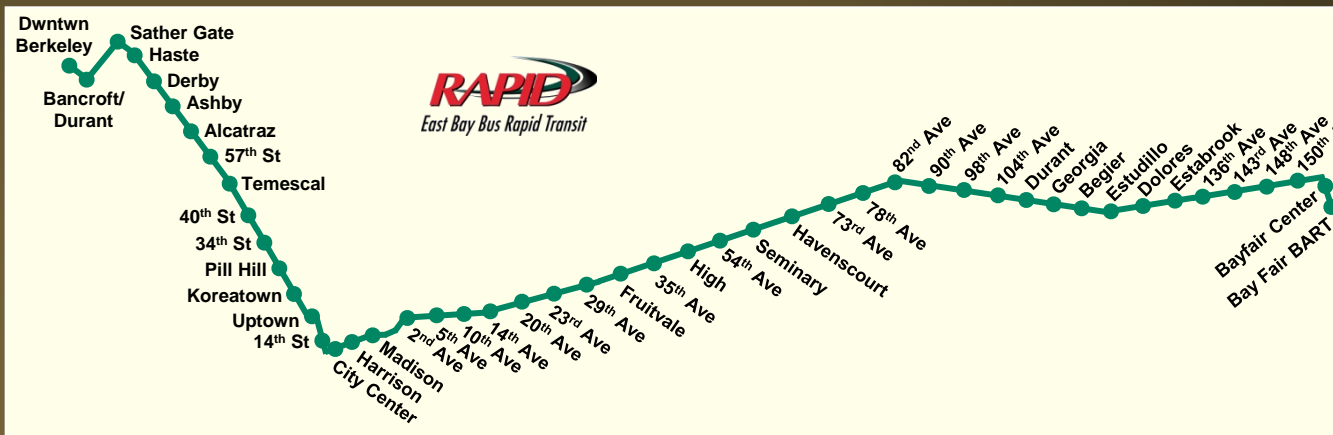


BRT Provides Fast, Reliable Transit Service

Bus
Lanes



Traffic
signal
priority



Efficient station spacing (average 4 blocks)

BRT is designed like rail systems

Ticket machines



Shelter, lighting, security



Level boarding

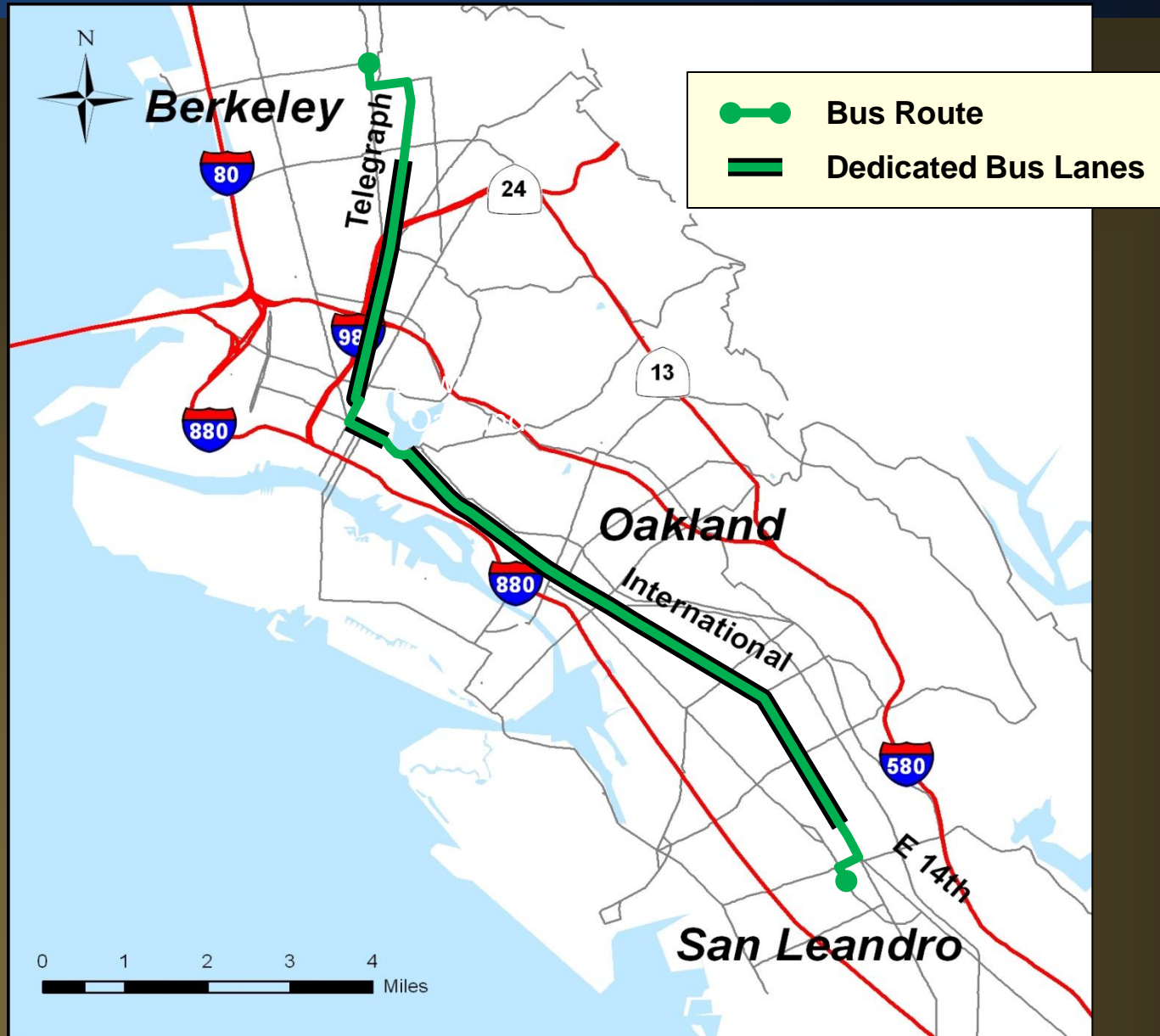
Real-time arrival signs



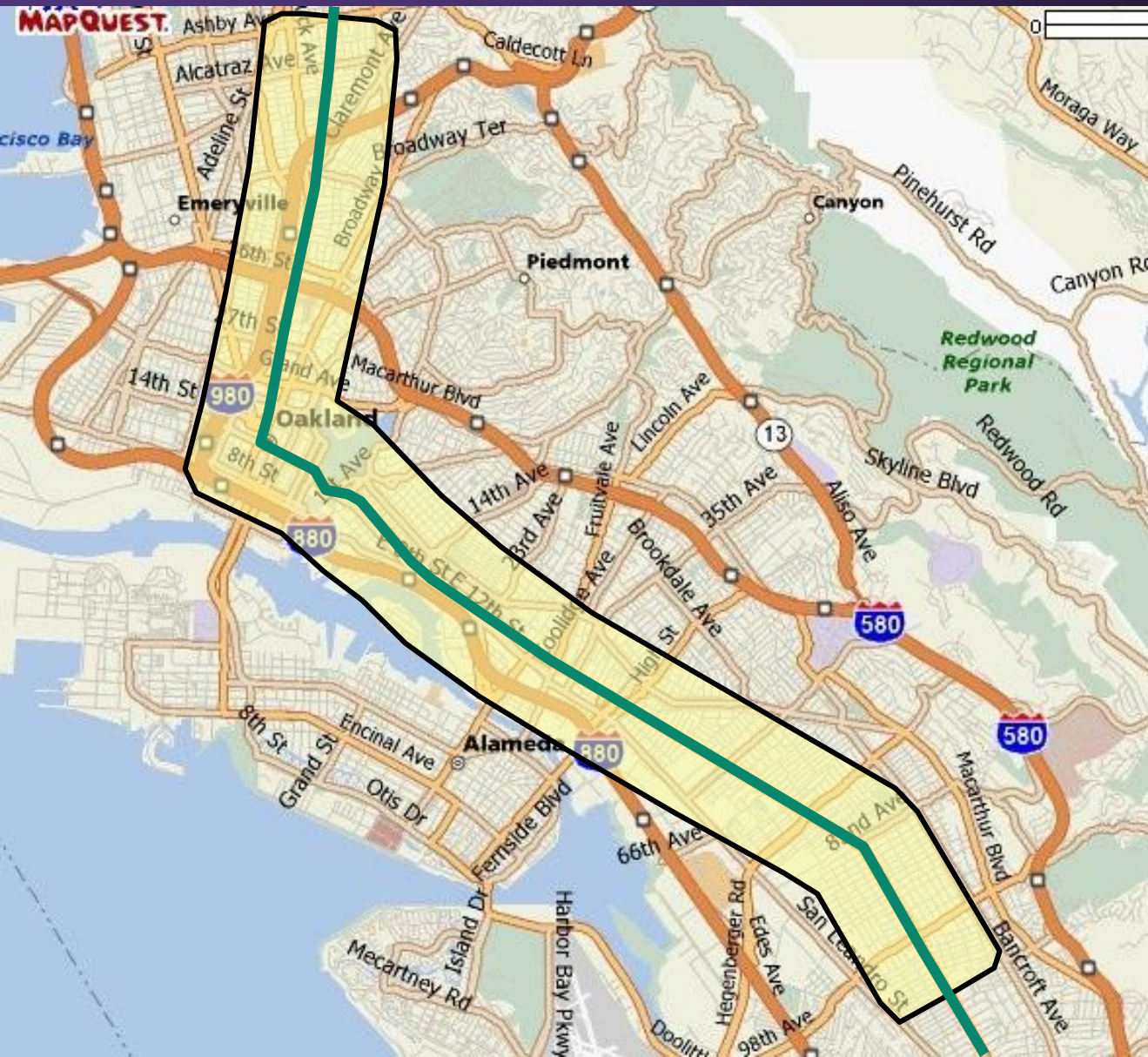
BRT in the United States




East Bay BRT Project



Centrally located - 40% of Oakland Residents Live Within ½ Mile of BRT

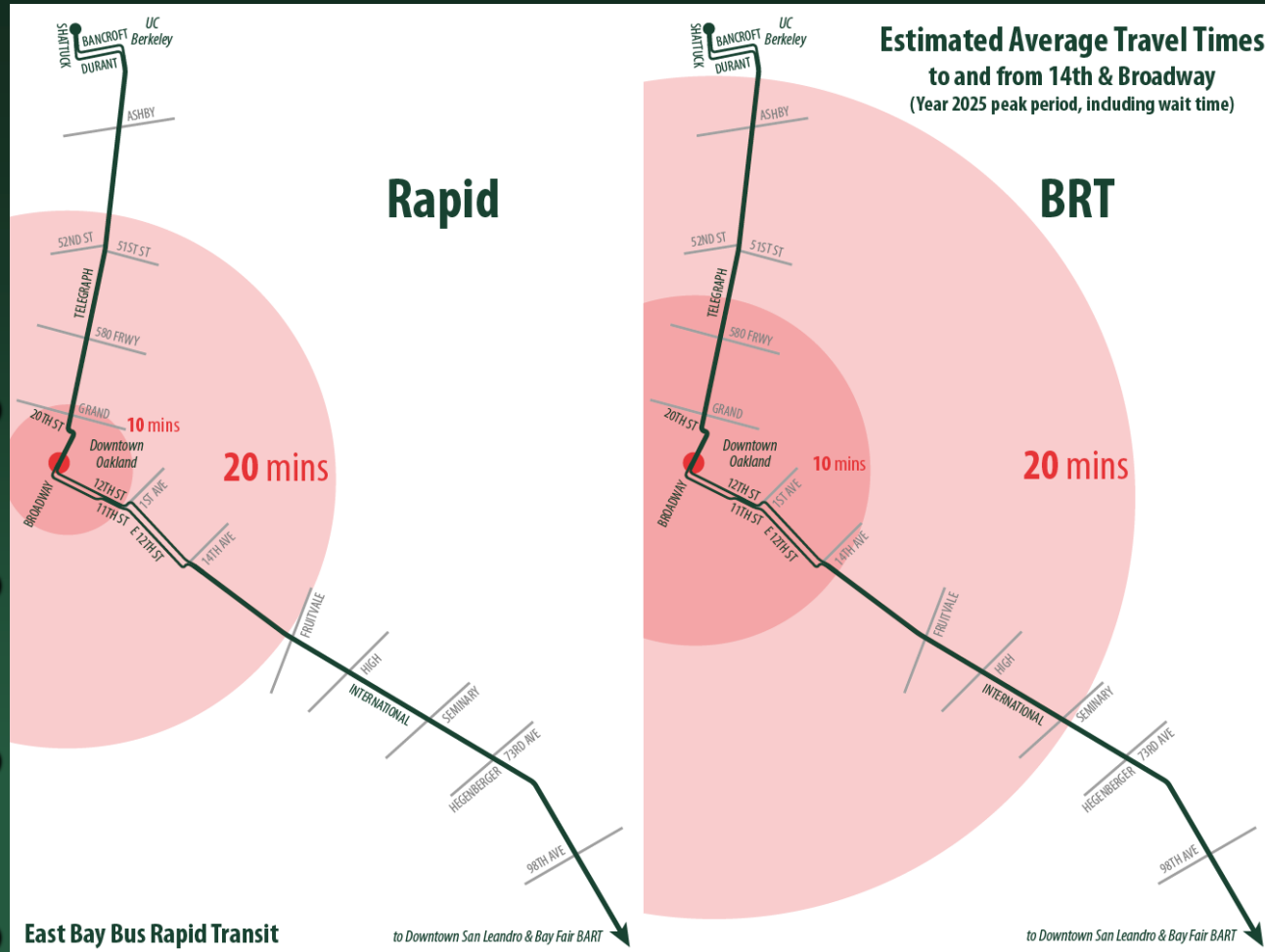


Key
 BRT Route

Reach More Places Quickly

More places within 20 minutes of Downtown Oakland

- > Easier access to jobs
- > Easier access to schools
- > Easier access to shopping
- > Easier access to entertainment and recreation



And More Reliably



Bus lanes



Remove interference from traffic



Level boarding



Quicker and easier to get on and off the bus



Off-bus fare payment



Eliminate hassles and delays at farebox



Traffic signal priority



Reduce delays at signals

Supports Pedestrian Friendly Cities & Attracts Investment

Provides focal points for pedestrian scale development

MacArthur Transit Village

Uptown Project

Fruitvale Transit Village

Neighborhood Revitalization



Telegraph Avenue

Existing Building

Building A



Supports Oakland & redevelopment programs

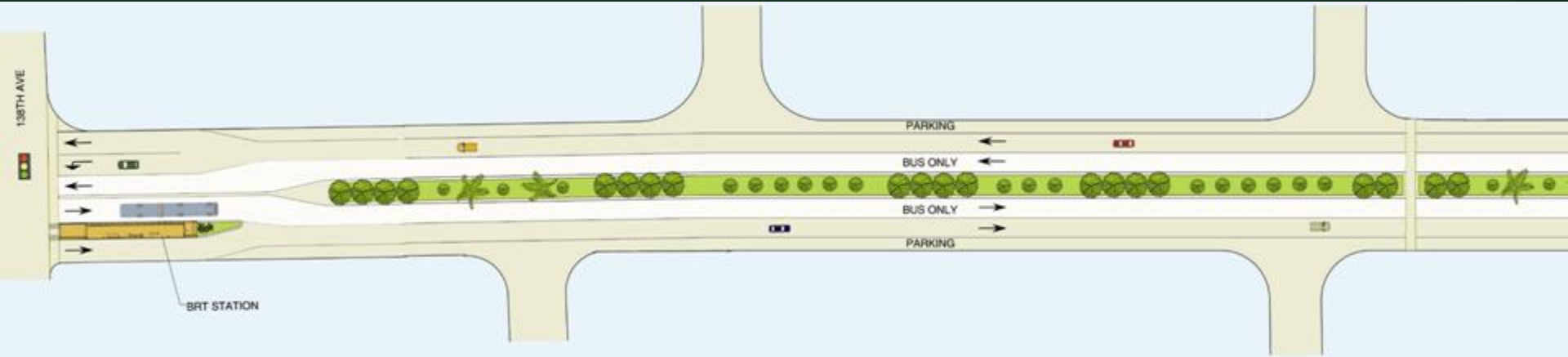
Broadway/MacArthur/San Pablo

Central District

Central City East

Coliseum

Beautify Street & Increase Pedestrian Safety



- > Refurbish or expand landscaping medians
- > Improves all existing and planned crosswalks & creates safe pedestrian refuges
- > Adds new traffic & pedestrian signals
- > Reduces car crashes and pedestrian injuries

Creates Well-Paying Green Jobs

- > Over \$200 million invested in East Bay communities
- > Fully employs 300 construction workers for a 3-year construction period
- > Creates 2,200 person-years of total employment (Includes, services, retail, manufacturing, etc.)
- > Preserves permanent jobs for bus drivers, mechanics and other workers
- > Attracts private and public investment in neighborhoods

Helps the Environment

- > BRT reduces vehicle travel by 9,300 trips per day
- > Reduces vehicle travel by 21,000 miles per day
- > Reduces pollutants that contribute to asthma & other diseases

Fuel Consumption

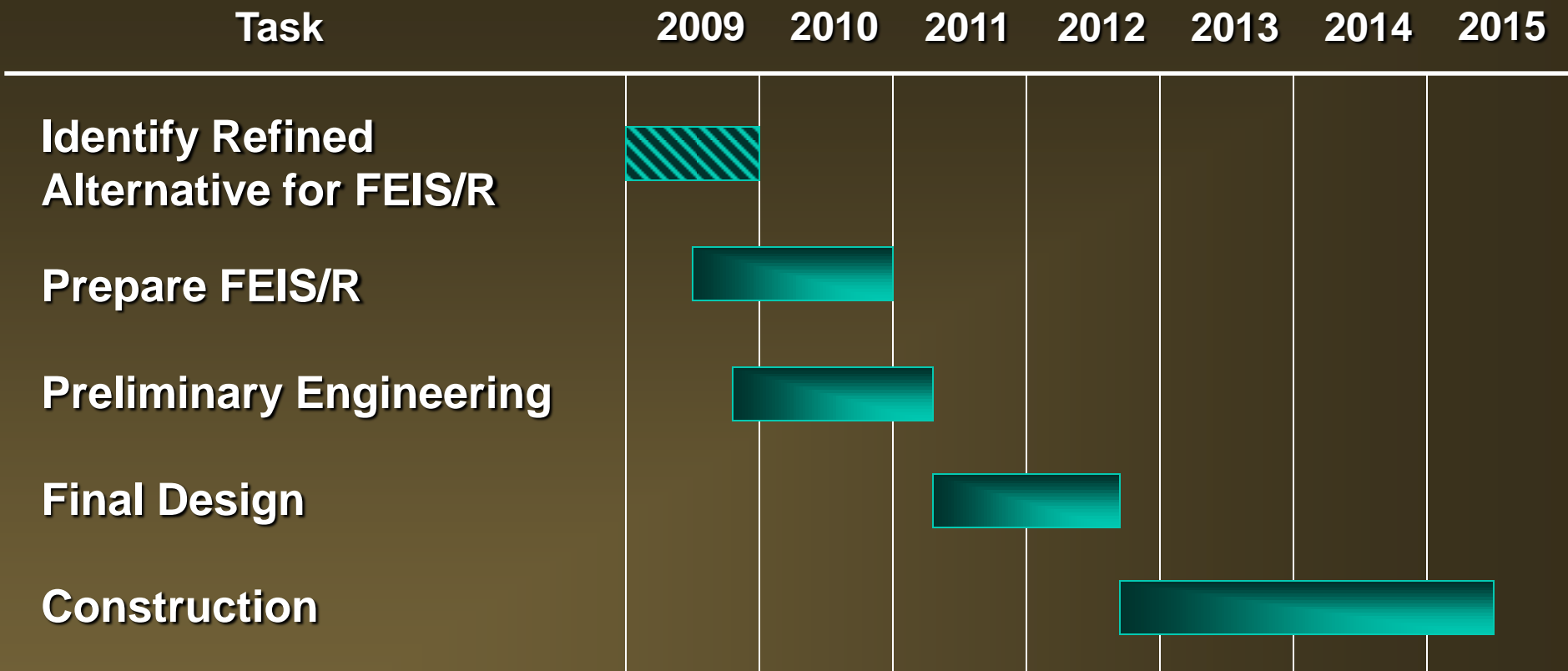
Down
210,000
gallons
per year*

Greenhouse Gas Production

Down
1,900 tons
of CO₂ per
year**

* CO₂ and CO₂ equivalents; estimated using US EPA methodology.

East Bay BRT Timeline



Thank You!

For more information, see:

www.actransit.org

or

www.actforme.org