



EXPRESS LANE
 FASTRAK TOLL TO
 262 Mission \$1.50
 237 Calaveras \$1.75
 HOV 2+ NO TOLL

I-680 SB Express Lane Monthly Operations March 2013 Update


A Presentation for the
 I-680 Sunol Smart Carpool Lane Joint Powers Authority (SSCLJPA)
 May 13, 2013



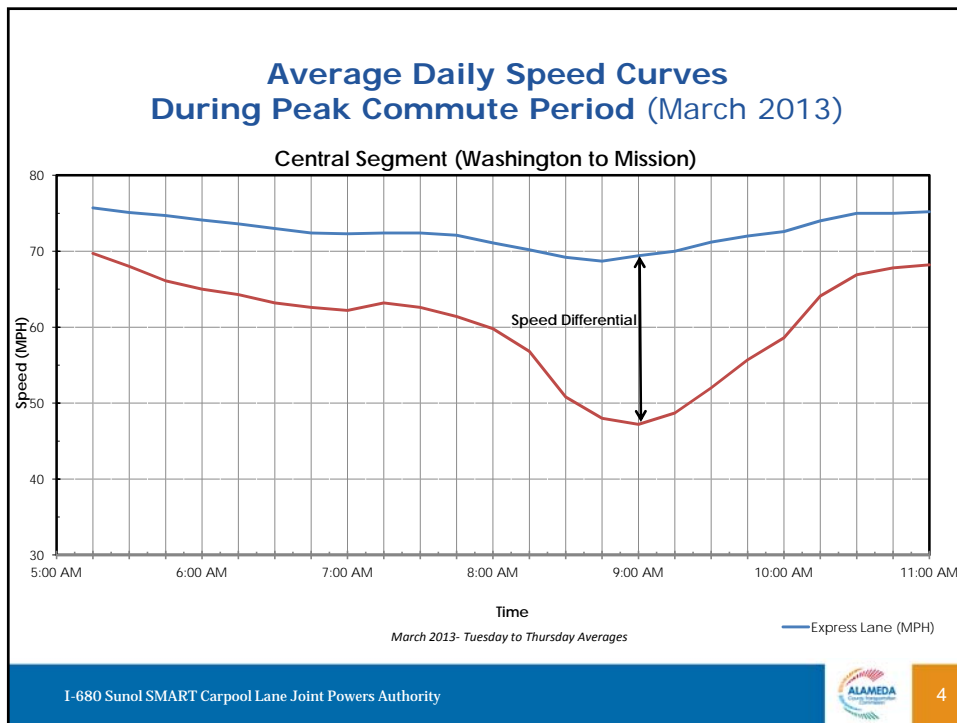
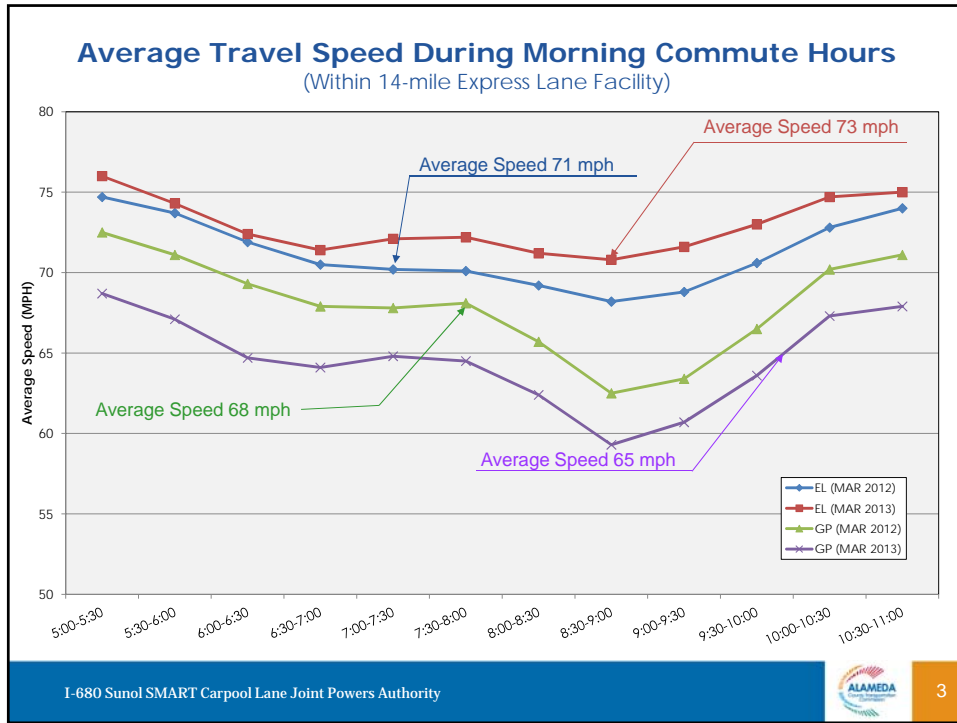
Year Over Year Comparison by Month

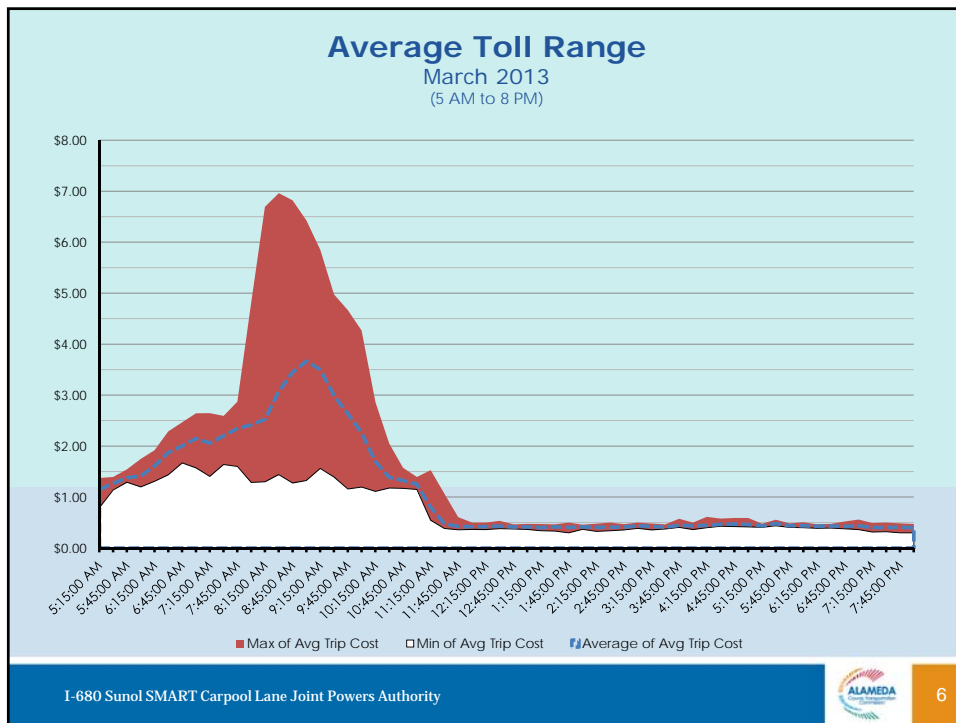
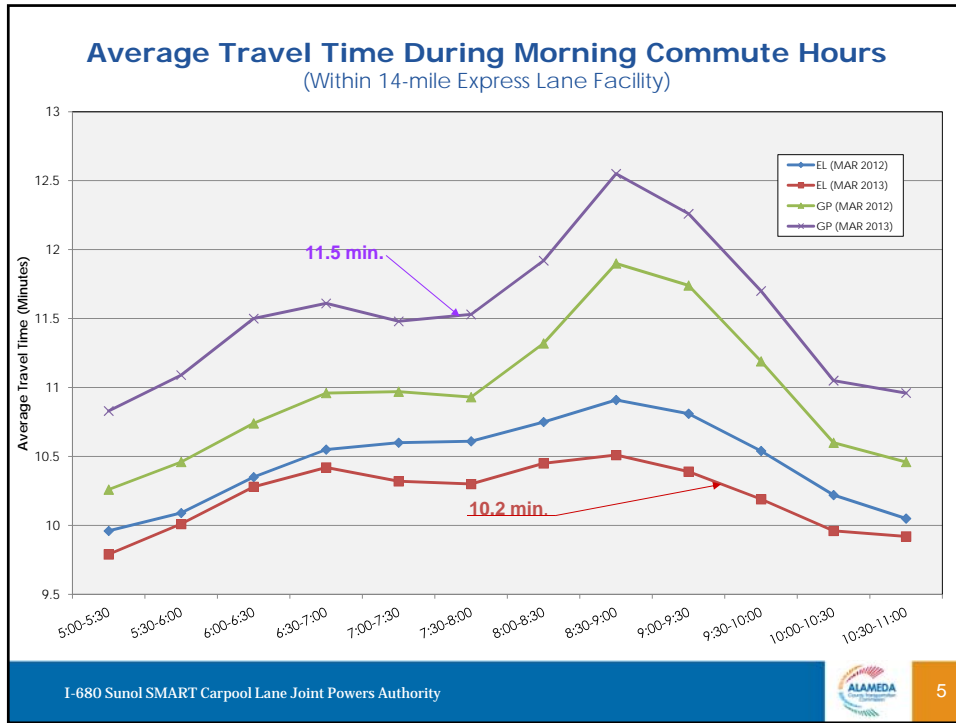
	March 2012	March 2013
Average Daily Toll Paying Trips	1,881 vehicles	2,330 vehicles
Average Daily Toll Revenue	\$4,525	\$4,925
Average Peak Period Toll Rate	\$2.41	\$2.11

I-680 Sunol SMART Carpool Lane Joint Powers Authority



2





Revenue (Actual Gross vs. Forecasted)

Revenue in FY 2012/13
(July 2012 – March 2013)

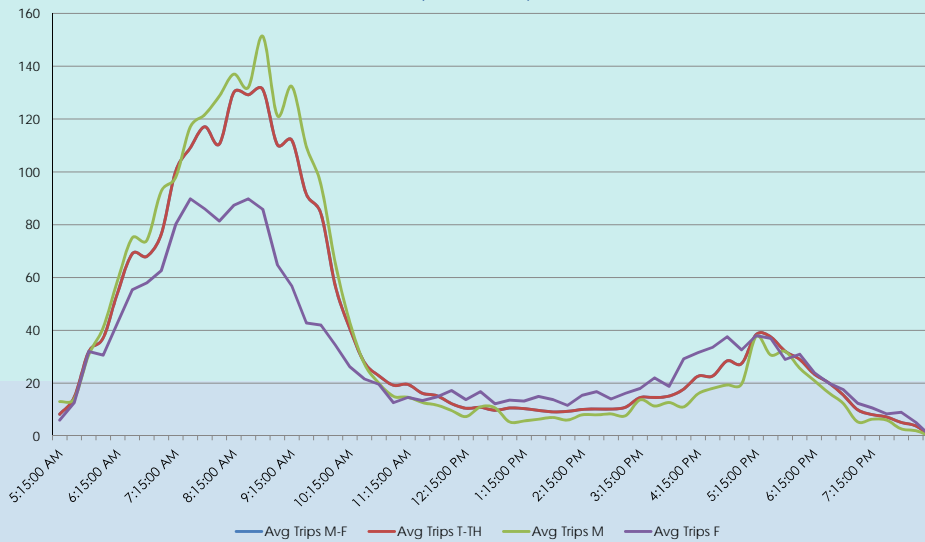
Actual Gross	\$996,300
Forecasted*	\$787,500

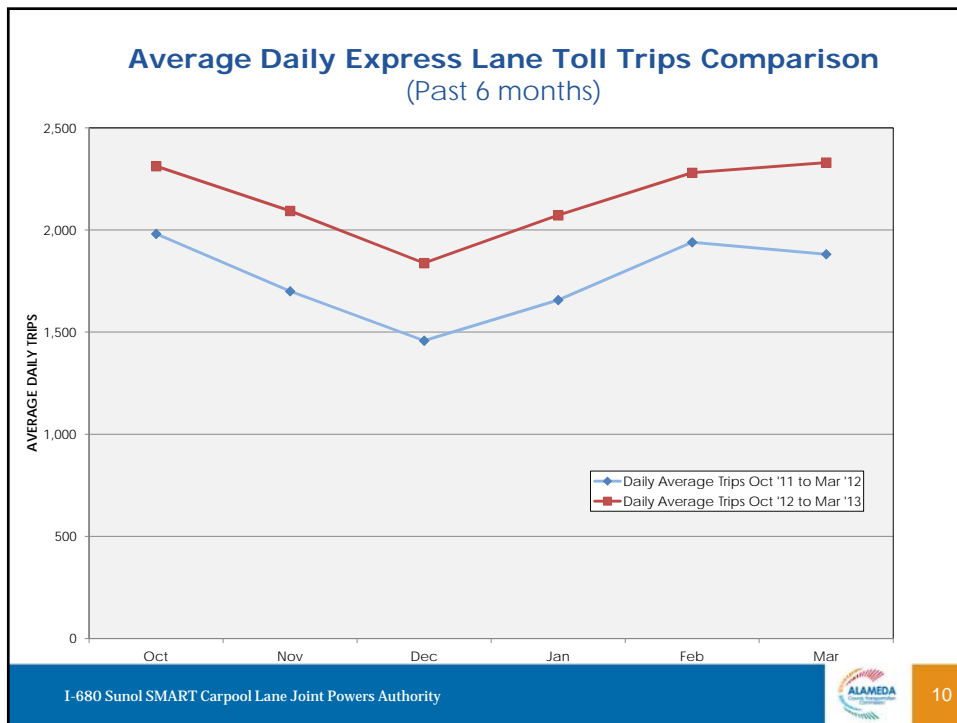
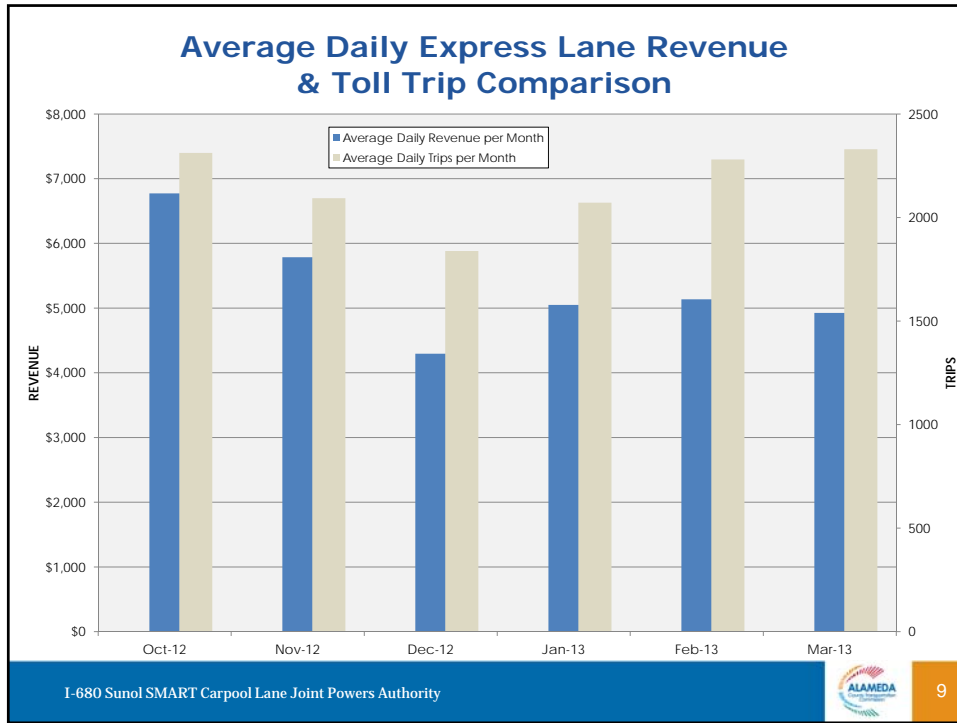
* Forecasted revenue for the full FY 13 is \$1,050,000



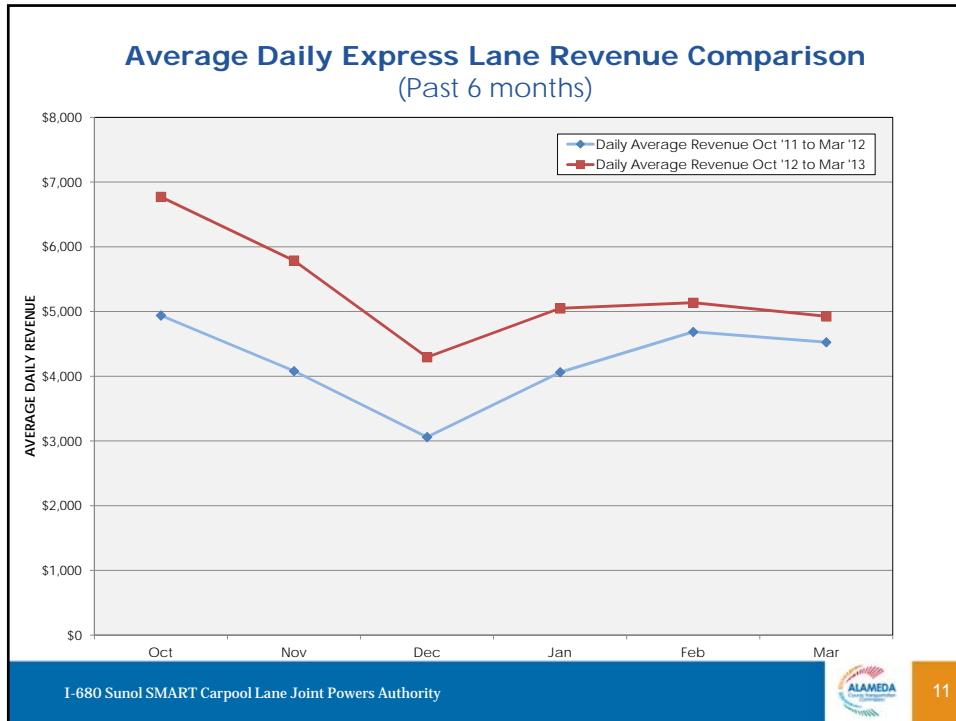


Average Daily Revenue Trips by Hour


March 2013
(5 AM to 8 PM)








California Highway Patrol Enforcement Quarter 1 Update January to March 2013

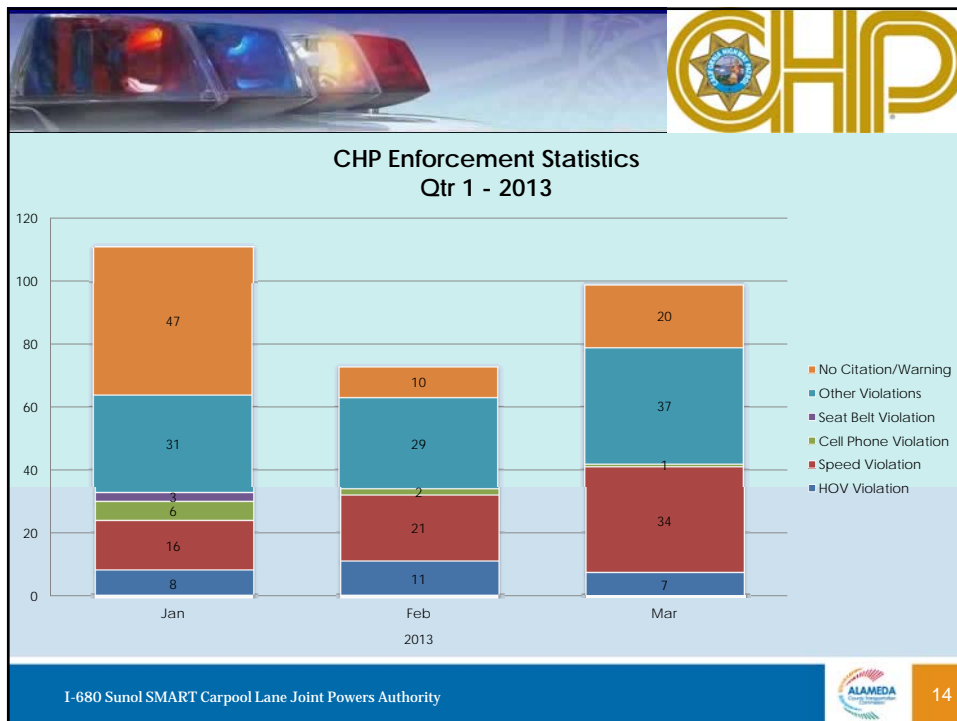
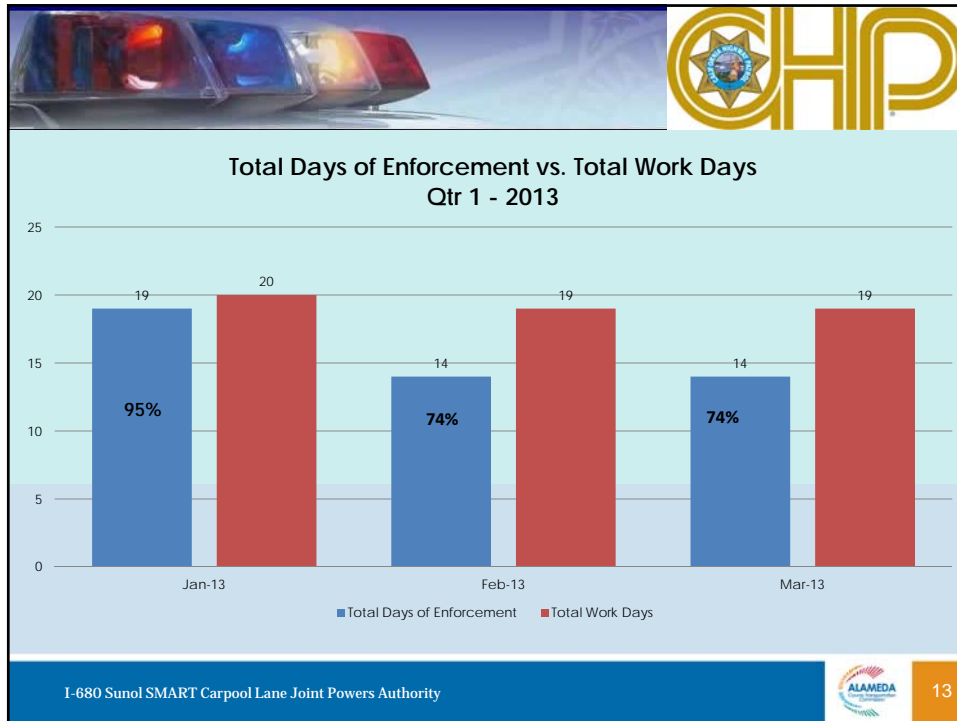


CHP Dublin – Lt. Libby

I-680 Sunol SMART Carpool Lane Joint Powers Authority



12



Questions ?

I-680 Sunol SMART Carpool Lane Joint Powers Authority

ALAMEDA

15