


Semi-Annual Programs Status Update on Pass-through Funds and Grant Programs FY 12-13

A Presentation by
Alameda County Transportation Commission Staff
April 2013



Total Dollars (FY 12-13) (in millions)

Measure B Funds	\$60.0
VRF Funds	\$6.1
<hr/>	
Total Funds	\$66.1



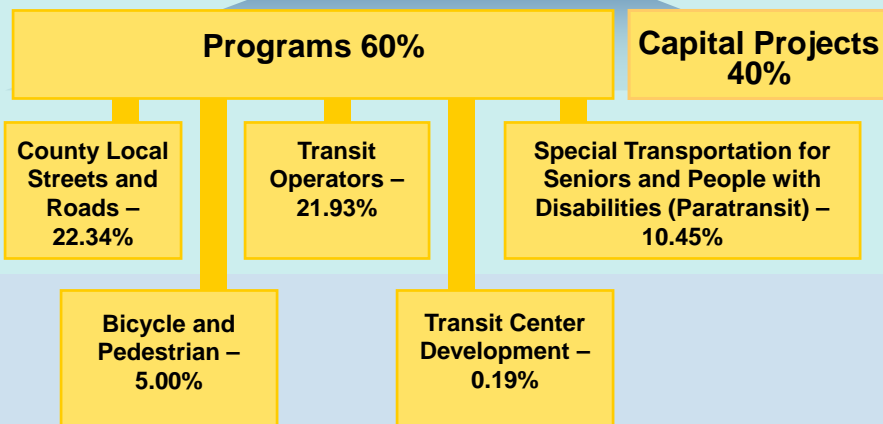
A Brief History: Measure B

- Measure B half-cent sales tax approved by voters in 1986
- Alameda County was one of the first California Self-Help Counties
 - Self-help Counties generate approximately \$4 billion per year for California transportation and mobility
- In 2000: Measure B was reauthorized with 81.5% voter approval rate
- In 2002: Tax collection and program allocations began
- In 2004: Grant allocations began



Measure B Makes a Difference

Measure B Sales Tax Revenue



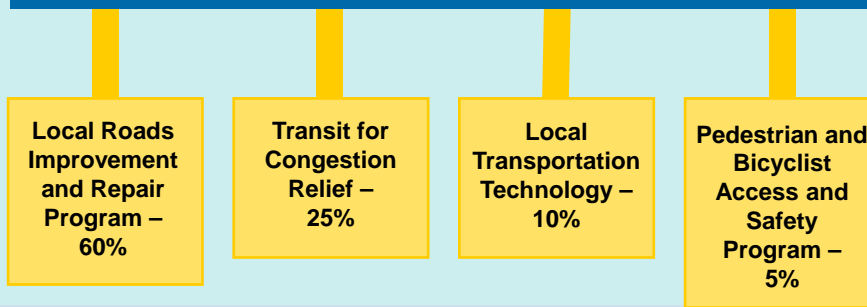
A Brief History: Vehicle Registration Fee

- Voters approved Measure (F) and the Vehicle Registration Fee (VRF) in November, 2010
- Collection of the annual \$10 per vehicle fee started with registrations due in May, 2011
- First VRF funds distributed in Spring 2012 as Local Streets and Roads pass-through funds



VRF Makes a Difference

VRF Sales Tax Revenue



Measure B-Funded Programs

Pass-through Fund Program

- Allocates funds to 21 jurisdictions
- Funds four types of programs
 - *Local Street and Roads*
 - *Mass Transit*
 - *Special Transportation for Seniors & People with Disabilities (Paratransit)*
 - *Bicycle and Pedestrian Safety*
- First half of FY 12-13, actual net sales tax revenue is \$58.1 million
 - Higher than initially projected
 - Alameda CTC distributed \$32.7 million as Measure B pass-through

Grant Programs

- Funds four types of programs
 - *Bicycle and Pedestrian Safety*
 - *Paratransit*
 - *Express Bus*
 - *Transit Center Development*
- Since 2004, 118 projects have been awarded Measure B funding totaling \$31.3 million
- \$31.3 million of Measure B funds leveraged \$87.6 million of other funds for a total investment of \$119.0 M
- New Grants to be Awarded in June 2013
 - Applications for Bicycle/Pedestrian and Express Bus funds are under review as part of the Coordinated Funding Program.
 - Applications for Paratransit Gap Grant Cycle 5 Program are also under review.



Vehicle Registration Fee Programs

Pass-through Fund Program

- Allocates funds to 15 jurisdictions
- Funds one program
 - *Local Streets and Roads*
- First half of FY 12-13, actual VRF receipts is \$6.5 million
 - Higher than initially projected
 - Alameda CTC distributed \$3.9 million as VRF pass-through

Grant Programs

- Funds three types of programs
 - *Bicycle and Pedestrian Safety*
 - *Transit for Congestion Relief*
 - *Local Transportation Technology*
- *Bicycle/Pedestrian and Transit Call for Projects is underway as part of the Coordinated Funding Program*
 - Over 60 applications received on March 15th
 - Final Program recommendation in June 2013



Measure B Pass-through Funds and Grants Distribution

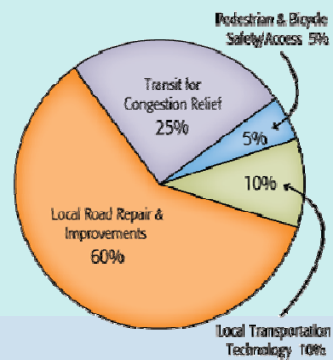
60% of annual Measure B Revenues for five programs:

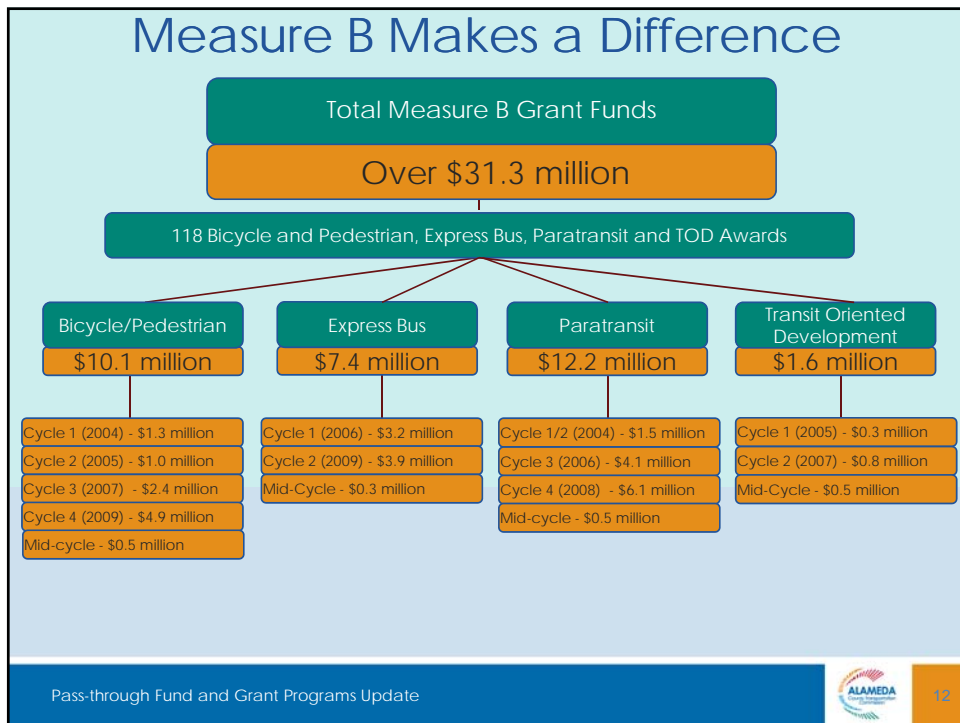
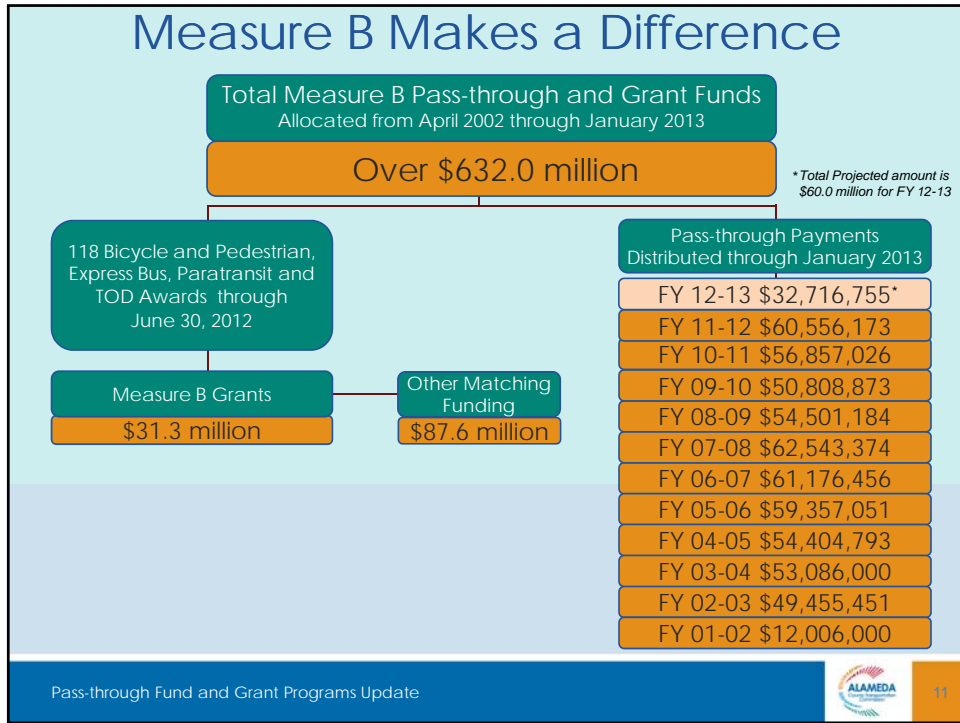
- Local Streets and Roads (22.34%)
- Mass Transit (21.92%)
 - Countywide Local and Feeder Bus Service (16.86%)
 - AC Transit Welfare to Work Program (1.46%)
 - Alameda/Oakland Ferry Service (0.78%)
 - Countywide Express Bus Service (0.70%)
 - Altamont Commuter Express (2.12%)
- Paratransit (10.45%)
- Bicycle and Pedestrian Safety (5%)
 - 25% regional planning and regional projects
 - 75% local jurisdictions
- Transit Center Development (0.19%)
 - Local Match
 - TCD-Technical Assistance Program

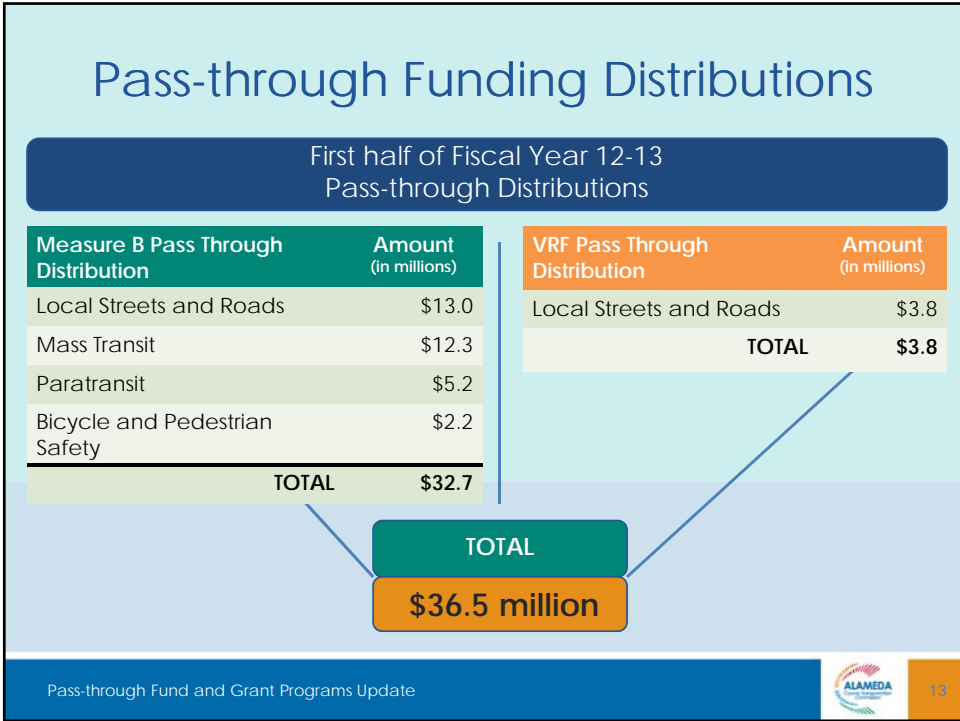


VRF Pass-through Funds and Grants Distribution

- 60% of annual VRF revenues
 - Distributed as pass-through funds for the Local Streets and Roads Program
- 40% of annual VRF revenues
 - Distributed as discretionary grants to three programs
 - Transit for Congestion Relief
 - Local Transportation Technology
 - Bicycle and Pedestrian Safety







- ## Pass-through Fund Compliance Reporting Requirements
- Road miles served
 - Population numbers
 - Complete Streets Policy by June 2013
 - Article in Recipient's or Alameda CTC's newsletter
 - Website coverage of the project
 - Signage about Measure B/VRF funding
 - End-of-year financial audit due in December 2013
 - End-of-year compliance report due in December 2013
 - Audits and compliance reports posted on Alameda CTC web page
- Pass-through Fund and Grant Programs Update
-

Grant Program Overview

- Competitive programs that improve transportation
 - 37 active projects
 - 81 complete projects
- Improve transportation access for the diverse population in Alameda County
- Provide improvements that encourage Alameda County residents to walk, bike, take public transportation and live in transit oriented developments



Bicycle and Pedestrian Countywide Discretionary Fund (CDF) Grant Program

- Updates to Countywide Pedestrian and Bicycle Plans
- City and County bicycle and pedestrian plans
- Gap closures
- Education and safety programs
- Capital projects



East Bay Bicycle Coalition (EBBC) Bicycle Safety Education Project

- East Bay Bicycle Coalition provides Bicycle Safety Education to youth and adults throughout Alameda County
- To date, 4,800 participants in 185 education classes in English, Spanish, and Cantonese.
 - Conducted Urban Cycling 101
 - On-the-Bike Road
 - Train-the-Trainer Session
 - Family Cycling Workshops,
 - Kids Bike Rodeos,
 - Lunchtime Commute Workshops
 - Adult How-to-Ride-a-Bike classes,
 - Police Diversion Outreach, including Bicycle Diversion Program on campus at UC Berkeley and a new "Bike Traffic School" program in the City of Alameda.



Express Bus Service Grant Program

- Expansion and enhancement of transit operations
- Express bus services
 - Dynamic message signage
 - Real-time information systems
 - Accessibility improvements



Livermore Amador Valley Transportation Authority (LAVTA) Express Bus Operating Assistance

- Measure B supports the operation of LAVTA's only WHEELS Express Bus Service Routes:
 - Route 20X - Service between Pleasanton and Livermore
 - Route 70X - Service between Dublin and Walnut Creek
 - Route 12V - Service between Hacienda Road/I-580 and Airway Blvd/I-580
- Project increases transit connectivity to BART stations, transit centers, and local transit services
- Project expands and enhances express bus services countywide



Paratransit Gap Grant Programs

- Largest paratransit allocation of any Bay Area sales tax measure
- Approximately one million rides reported annually during Paratransit Program Plan Review
- Wheelchair and Scooter Breakdown Transportation Service
- Hospital Discharge Services
- Supports Americans with Disabilities Act (ADA) paratransit programs and city based programs



Alzheimer's Services of the East Bay (ASEB) Special Transportation Services for Individuals with Dementia Transportation and Escorts

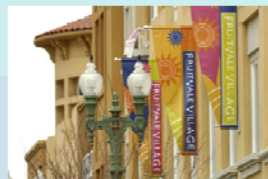
- Project implements specialized transportation for individuals with Alzheimer's disease and provides rides to the ASEB's Hayward and Berkeley care facilities.
- Measure B funds the operation of six daily vehicles.
- Three vans originate from the Berkeley facility, and three operate from the Hayward facility.
- The program supports transportation services Monday through Friday in the morning and afternoon hours.



Transit Center Development Grant Program

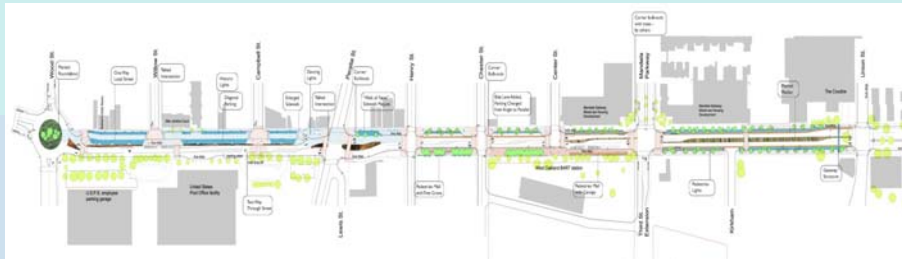


- Focus on residential and retail development near transit centers
- Mode shift away from cars to encourage walking, biking, and using public transportation
- Accessibility improvements



City of Oakland West Oakland Seventh Street Transit Village Streetscape Project

- Improves bicycle and pedestrian access to the West Oakland BART Station
- Area beautification
- Enhances sense of community and transit oriented transportation



Pass-through Fund and Grant Programs Update



23

Future Tasks

Continue to implement new Master Program Fund Agreement Requirements, including

- Complete Streets Resolutions
- Reserve Policy
 - FY 11/12 - Year 1 included identifying Reserve Projects and financial commitments
 - FY 12/13 - Year 2 of the policy implementation will include tracking identified projects and commitments
- Incorporate Measure B and VRF programs into the Strategic Planning and Programming Policy effort, including a Capital Improvement Program and Programs Investment Program

