



**I-680 SB Express Lane  
Monthly Operations  
Update**

A Presentation for the  
Sunol Smart Carpool Lane Joint Powers Authority (SSCLJPA)  
**July 9, 2012**



### Revenue (Actual Gross vs. Forecasted)

FY 2011/12 Year End Revenue  
(July 2011 – June 2012)

Actual Gross	\$1,086,000
Forecasted	\$850,000

I-680 Sunol SMART Carpool Lane Joint Powers Authority



2

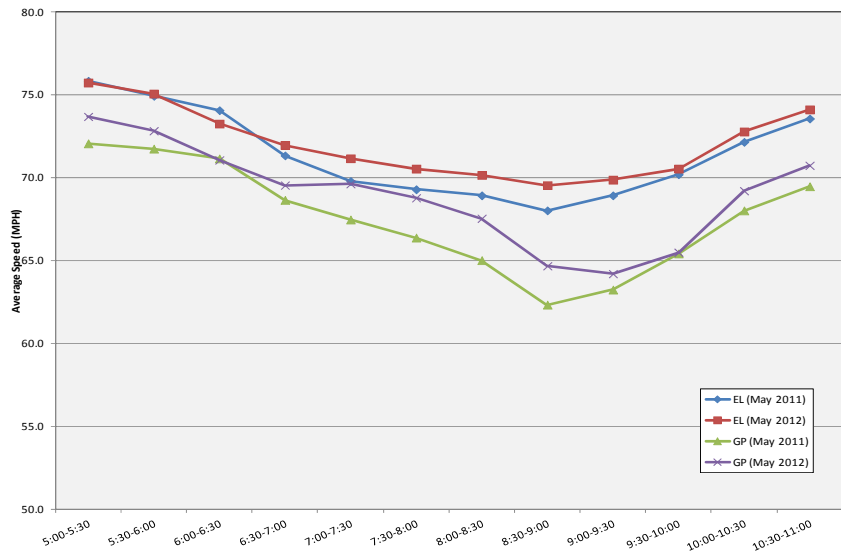
## Comparison of FY11 and FY12 Metrics

	FY 2010/11 (Sept 2010 – June 2011)	FY 2011/12 (Sept 2011 – June 2012)
Actual Gross Revenue	\$641,700	\$945,200
... during the morning commute hours (5:00 to 11:00 a.m.) ...		
Average Daily Toll Users	1,030	1,390
Average Daily Throughput	29,220	29,820
Average Speed (EL)	70 mph	72 mph
Average Speed (GP)	63 mph	69 mph

## Year Over Year Comparison by Month

	June 2011	June 2012
Average Daily Revenue	\$3,630	\$4,470
Average Daily Trips (EL)	1,570	2,050
Average Peak Hour Toll Rate	\$2.78	\$2.61

### Average Travel Speed During Morning Commute Hours (Within 14-mile Express Lane Facility)

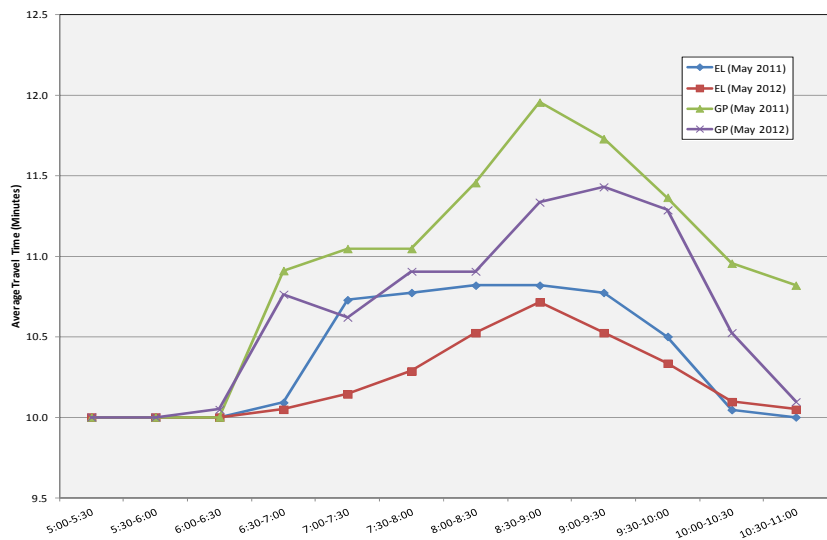


I-680 Sunol SMART Carpool Lane Joint Powers Authority



5

### Average Travel Time During Morning Commute Hours (Within 14-mile Express Lane Facility)

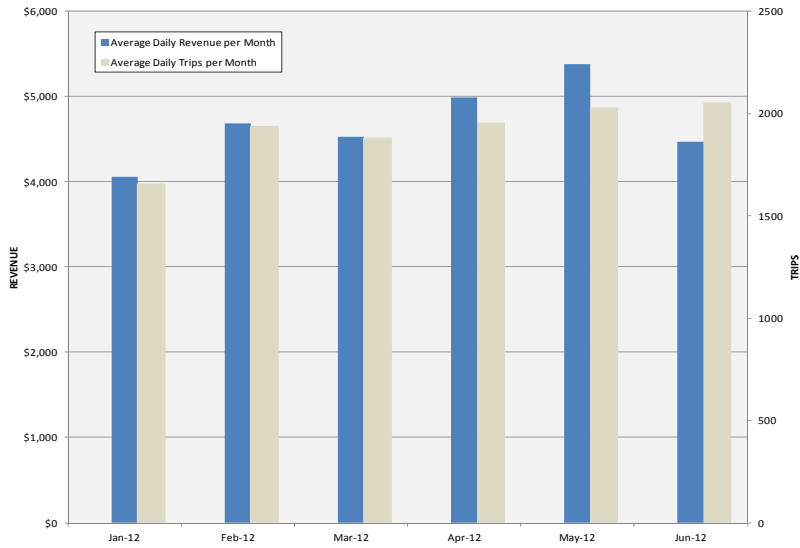


I-680 Sunol SMART Carpool Lane Joint Powers Authority



6

## Average Daily Express Lane Revenue & Trip Comparison

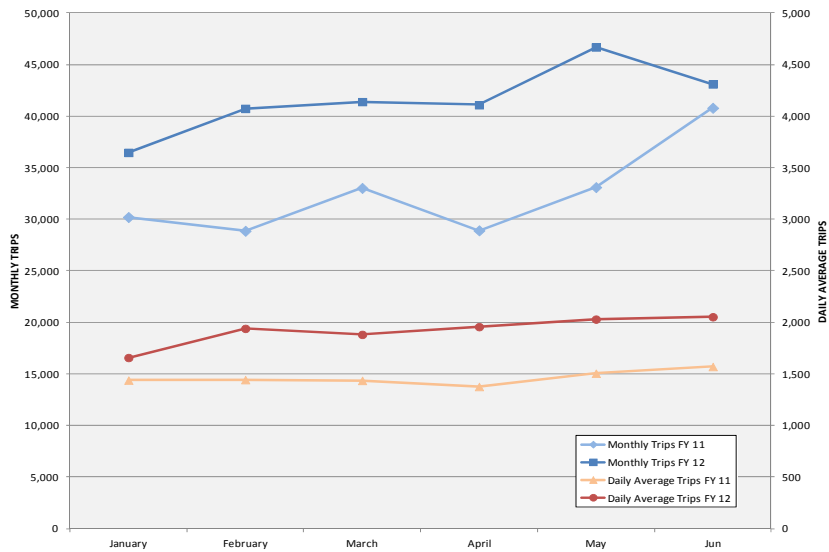


I-680 Sunol SMART Carpool Lane Joint Powers Authority



7

## Average Monthly/Daily Express Lane Trips Comparison

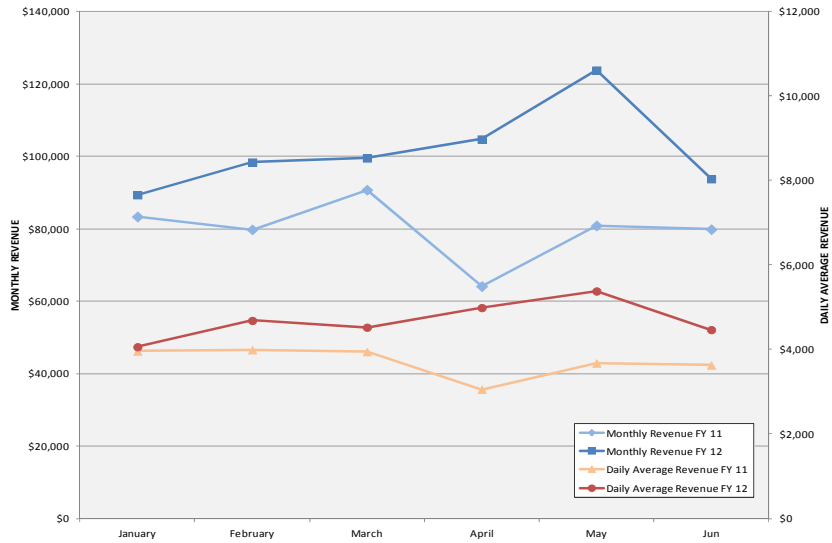


I-680 Sunol SMART Carpool Lane Joint Powers Authority



8

### Average Monthly/Daily Express Lane Revenue Comparison



I-680 Sunol SMART Carpool Lane Joint Powers Authority



### Comparison between SB 680 & 237/880 Express Lanes

	I - 680	237/880 I/C
<b>Opened on</b>	September 2010	March 2012
<b>Direction</b>	Southbound only	Bi-directional
<b>Length of Facility</b>	14 miles	11 miles
<b>Hours of Operation</b>	5:00 – 20:00	5:00-10:00 & 15:00-19:00
<b>Number of Toll Zones</b>	3	2
<b>Toll Collection</b>	FasTrak®	FasTrak®

I-680 Sunol SMART Carpool Lane Joint Powers Authority



## Comparison between SB 680 & 237/880 Express Lanes

	I- 680	237/880 I/C
Violation Enforcement	CHP	CHP
Average Daily EL Traffic	15,500	10,000
Daily Toll Users (% of EL Traffic)	12%	20%
Daily Toll Revenue	\$4,600	\$3,200



Questions ?