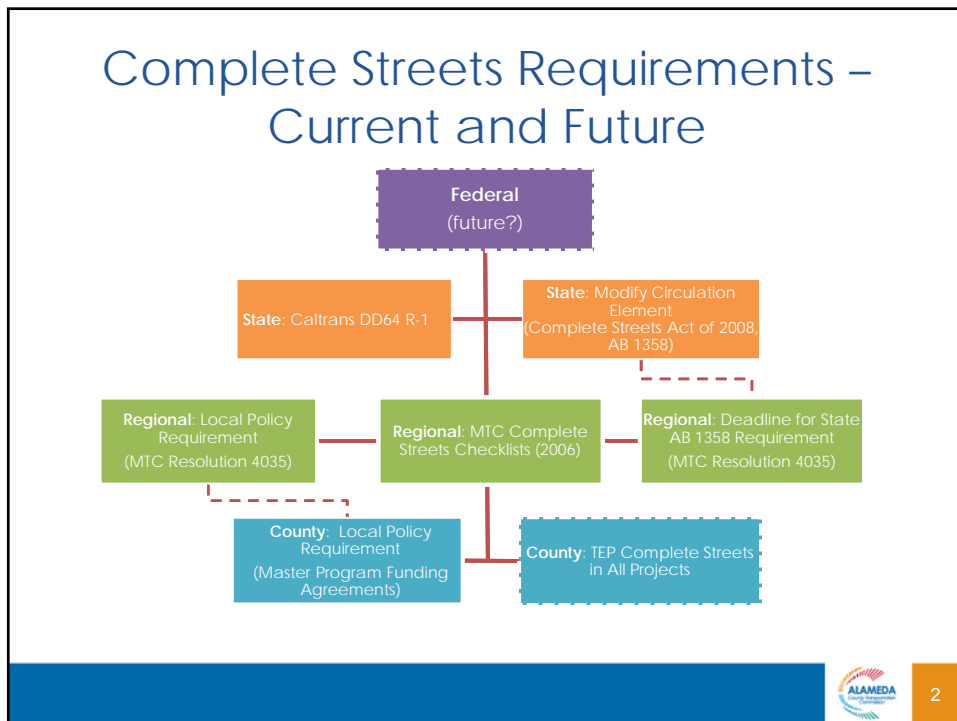




Plan Bay Area Implementation: Complete Streets

January 9, 2014

Presentation to Alameda County Technical
Advisory Committee (ACTAC)



Local Circulation Element Update

Complete Streets Act of 2008

"Commencing January 1, 2011, upon any substantial revision of the circulation element, the legislative body shall modify the circulation element to plan for a balanced, multimodal transportation network that meets the needs of all users of the streets, roads, and highways for safe and convenient travel in a manner that is suitable to the rural, suburban, or urban context of the general plan."

MTC Resolution 4035*

"For the OBAG cycle subsequent to FY 2015-16, jurisdictions must adopt housing elements by **January 31, 2015** ~~October 31, 2014~~ (based on a **July April** 2013 SCS adoption date); therefore, jurisdictions will be required to have General Plans with approved housing elements and that comply with the Complete Streets Act of 2008 by that time to be eligible for funding. This schedule allows jurisdictions to meet the housing and complete streets policies through one general plan amendment."

* Amended November 14, 2013



3

Circulation Element Update Tools

- AB 1358 does not give any agency responsibility for defining a compliant circulation elements
- Several documents containing guidance:
 - *Governor' Office of Planning and Research update to General Plan Guidelines – focuses on possible topics to address, links to case studies*
www.opr.ca.gov/docs/Update_GP_Guidelines_Complete_Streets.pdf
 - *ChangeLab Solutions Model Language*
http://changelabsolutions.org/sites/default/files/CalGeneralPlanCompletesStreets_rebrand_201201008.doc
 - *Alameda CTC White Paper – anticipated Spring 2014, focuses on examples of strong language from case studies*



4

Local Complete Streets Implementation

Local Policy Implementation:

- Policies have 10 required components including Stakeholder Consultation and Exception Process
- Many policies state that these components will be developed (see next slide)
- Alameda CTC to ensure these components fulfilled via compliance reporting

Broader Complete Streets shift:

- Complete Streets involves rethinking “business as usual” – revisiting policies, procedures, ordinances, maintenance/enforcement practices, etc.
- Integrate complete streets principles throughout city departments and functions



Local Policy Implementation

Jurisdiction	Stakeholder Consultation	Exception Process
Alameda County		
City of Alameda		
City of Albany	X	X
City of Berkeley		
City of Dublin	X	X
City of Emeryville		
City of Fremont		
City of Hayward	X	
City of Livermore		
City of Newark	X	
City of Oakland	X	
City of Piedmont		
City of Pleasanton	X	
City of San Leandro	X	X
City of Union City	X	X

“X” indicates that policy submitted to Alameda CTC explicitly states that a process will be developed.



Alameda CTC Complete Streets policy

- TEP implementing guidelines state that all investments will conform to Complete Streets requirements and Alameda County guidelines
- “Practice what we preach”
- Complementary not duplicative of local and regional policies/requirements



7

Next Steps

- Monitor development of local Stakeholder Consultation and Exceptions processes
- Engage Countywide BPAC in project review
- Develop Alameda CTC Complete Streets policy to implement TEP requirement
- Support pilot local complete streets implementation efforts with countywide applicability using SC-TAP



8