



A presentation to Projects and Programs Committee  
September 14, 2015

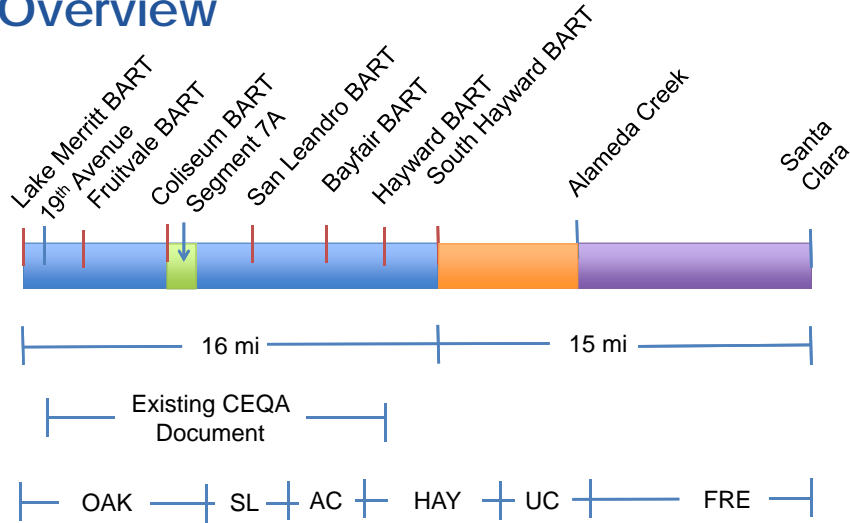


East Bay Greenway: Lake Merritt BART Station to South  
Hayward BART Station - Project Approval and  
Environmental Document Phase

## Presentation Overview

- Corridor overview
- Project history
- Project opportunities
- Project Approval/Environmental Document (PA/ED) work approach
- Project challenges
- Lessons learned from Segment 7A

# East Bay Greenway Corridor Overview



# Project History

Past Studies	Pilot Segment (7A)	Lake Merritt to South Hayward
<ul style="list-style-type: none"> <li>East Bay Greenway Concept Plan (Urban Ecology, 2008)</li> <li>UPRR Oakland Subdivision Corridor Improvement Plan (ACPWA, 2010)</li> <li>CEQA Document for 12-mile project (Alameda CTC, 2012)</li> </ul>	<ul style="list-style-type: none"> <li>Federal TIGER II grant awarded to East Bay Regional Park District for five regional trail segments (2012)</li> <li>NEPA clearance for half-mile segment (2012)</li> <li>Advertised for construction (2013)</li> <li>Construction complete (2015)</li> </ul>	<ul style="list-style-type: none"> <li>State Active Transportation Program grant awarded for PA/ED phase (2014)</li> <li>Measure BB passes including \$264 for three major trails (2014)</li> </ul>



## Opportunities

- High quality active transportation corridor
  - *Direct route*
  - *Connects to destinations*
  - *Maximize separation from vehicle traffic*
- Support BART station modernization, TODs, and PDAs
- Competitiveness for grant funds



5

## PA/ED Phase Outcomes

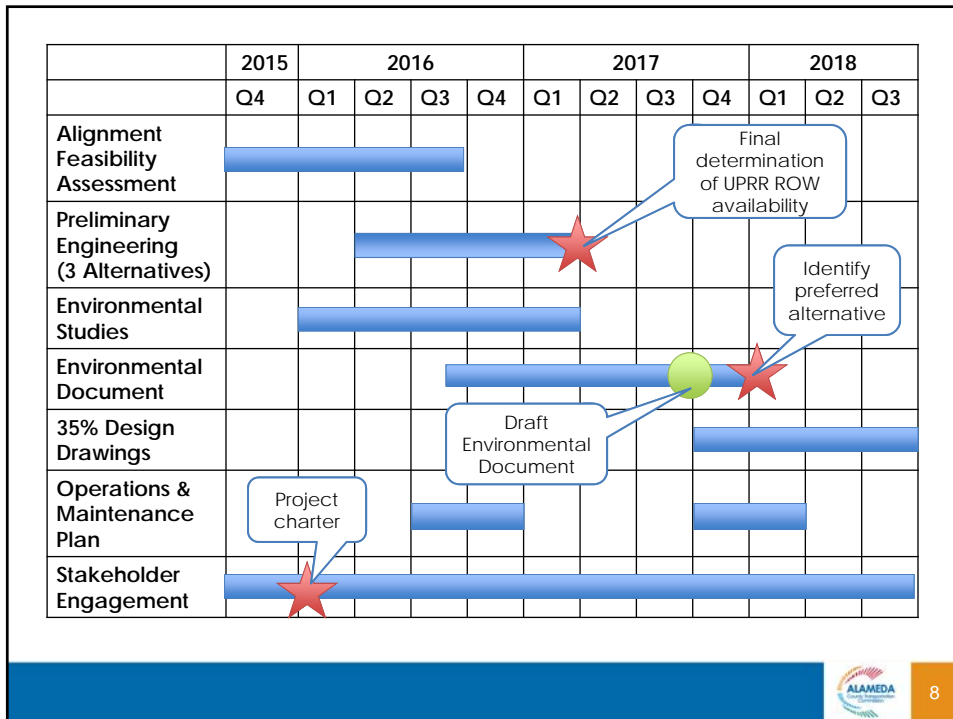
- Determine preferred project alignment and cross-section
- Achieve CEQA and NEPA clearance
- Complete Preliminary Design
- Determine operations and maintenance roles and responsibilities



6

## PA/ED Phase Approach

- “Fresh look” at project alignment
  - *Assess feasibility of rail-to-trail concept*
  - *Leverage past environmental studies, concept plans*
- Early and proactive engagement with UPRR
- Stakeholder coordination at all levels
  - *Project charter*
- Integrate operations & maintenance discussion with project development



## Challenges

- Union Pacific Railroad ROW option
- Multi-agency coordination
  - *Design consensus*
  - *Operations & maintenance responsibilities*
- Environmental impacts
- Ensuring safety/security
- Phasing/implementation



## Lessons Learned from Pilot Segment 7A

Issue	Strategy to Address
Design Approval	<ul style="list-style-type: none"> <li>• Convene PDT regularly</li> <li>• Build consensus on design criteria before beginning design work</li> <li>• Engage decision makers in design review</li> <li>• Project charter</li> </ul>
Operations & Maintenance	<ul style="list-style-type: none"> <li>• Dedicated task in scope of work</li> <li>• Integrate design and O&amp;M decision-making</li> </ul>
Hazardous materials	<ul style="list-style-type: none"> <li>• Anticipate and budget for hazardous material clean-up costs from outset</li> </ul>



# Questions and Answers

