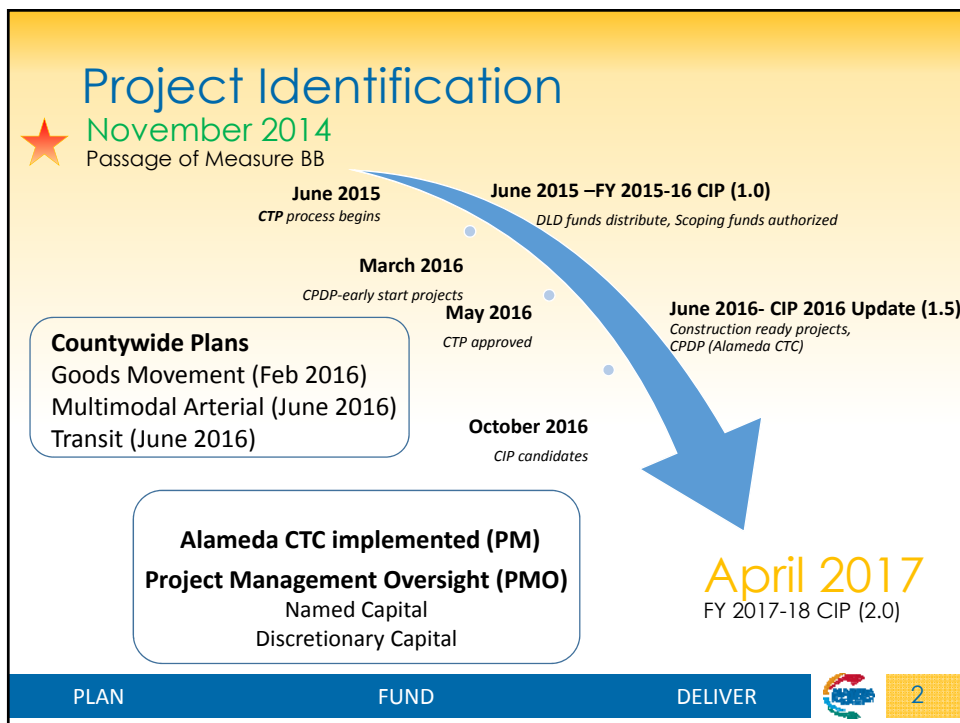


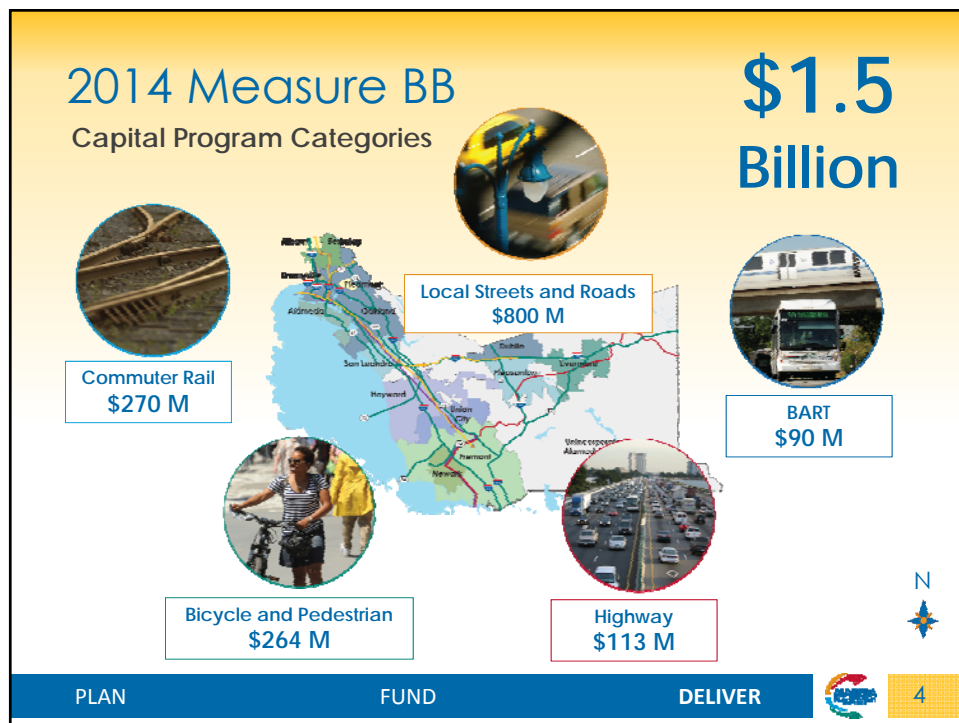
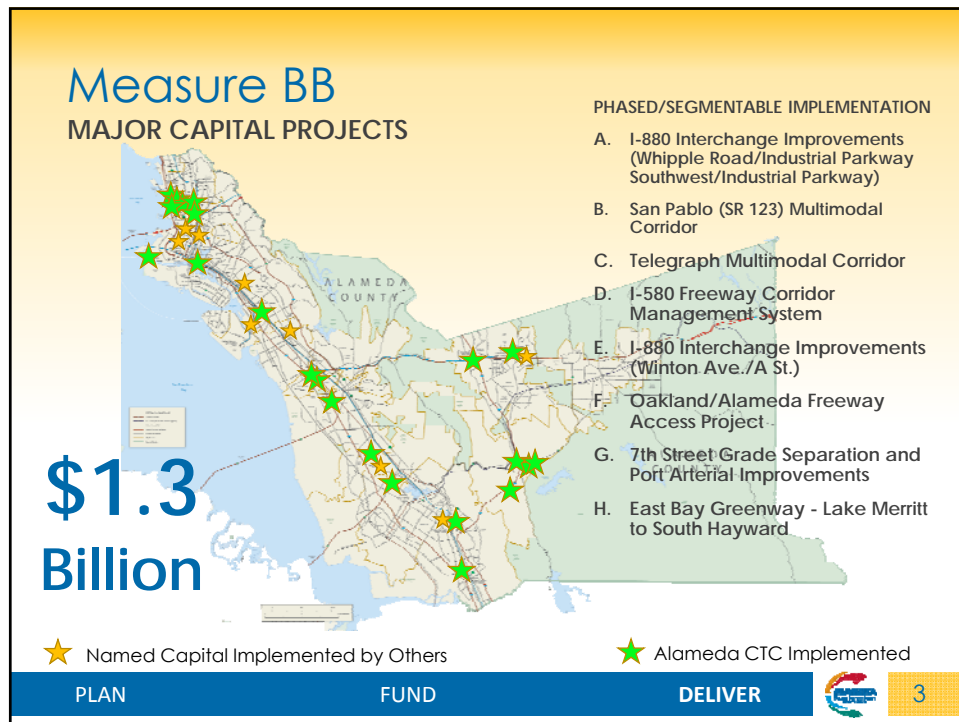
ALAMEDA COUNTY TRANSPORTATION COMMISSION
Measure BB
Capital Project Delivery Plan Update

A presentation to the Programs and Projects Committee



Presented by Trinity Nguyen, Director of Project Delivery
 April 10, 2017





Capital Program

Project Management and Delivery Guideline

Program Strategies

Alameda CTC's roles and responsibilities during the environmental process.

Consistent **stakeholder engagement** for projects during the environmental phase and development of tools.

Methodology to determine which projects should have **an early investment to complete the environmental phase** in order to position for leveraging opportunities.

Establishment of a **Capital Risk Reserve** to address risk areas that are difficult to estimate or the range of the cost is significant.

Updating Alameda CTC's existing **guidelines** including: Construction Management Guidelines and Estimating Guidelines

Evaluation of the **applicability of alternative delivery methods** (ADM) for Alameda CTC's capital program.

Methodology to determine **level of investment into a future phase that is not fully funded**.

PLAN

FUND

DELIVER



5

Capital Program

Project Phases

Initiation

SCOPING
Initiating the project and determining project scope, schedule, and cost estimates for funding and programming.

(12-18 months)



PRELIMINARY ENGINEERING/ ENVIRONMENTAL
Preparing and obtaining approval of the project report and environmental document, and obtaining approval of a preferred alternative.

(18-36 months)



FINAL DESIGN
Complete design of preferred alternative and obtain permits, ensure funding adequate to begin construction. Includes Right-of-Way Clearance.

(12-24 months)



CONSTRUCTION
Construct per plans and specifications. Includes close-out activities.

(12-36 months)



Close-out

PLAN

FUND

DELIVER



6

Capital Program

Environmental Delivery Summary

PROJECT	2015	2016	2017	2018	2019
I-80 Gilman Interchange Improvements					
I-80 Ashby Interchange Improvements					
Route 84 - Pigeon Pass to I-680 & SR84/I-680 Interchange					
Oakland/Alameda Freeway Access					
7th Street Grade Separation and Port Arterial Improvements					
East Bay Greenway - Lake Merritt to South Hayward					
PLAN	FUND		DELIVER		7

I-80 Gilman Interchange Improvements



- Improve congestion and mobility
- Shorten queues
- Improve turn conflicts and merging
- Improve local and regional biking facilities
- Provide safe access for pedestrian and bicyclists

Project Purpose and Benefits

<http://www.alamedactc.org/i80gilman>



8

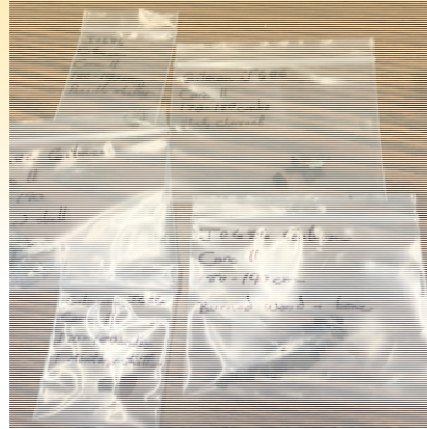
I-80 Gilman Interchange Improvements

Stakeholders

FHWA
Caltrans
City of Berkeley
City of Albany
East Bay Regional Parks
Golden Gate Fields



EBMUD
PG&E
UPRR

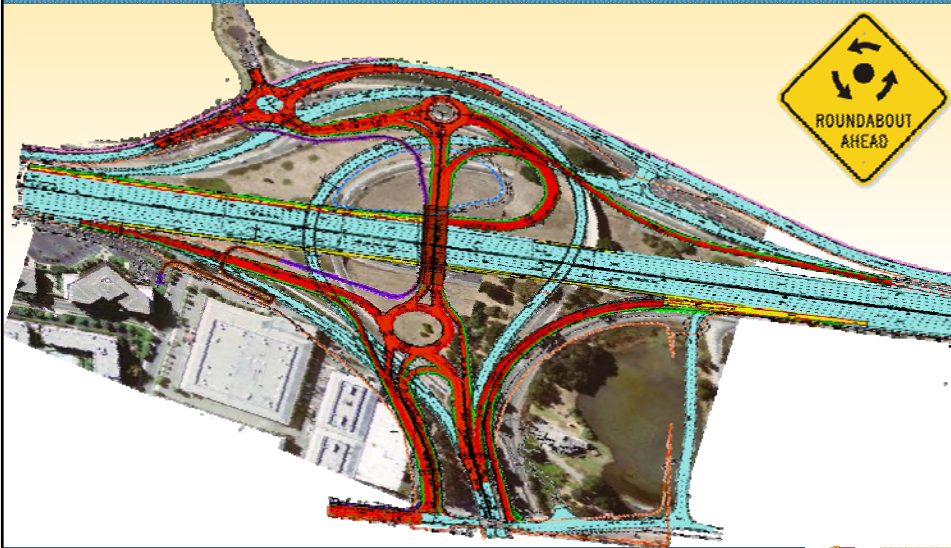


Challenges and Risks



9

I-80/Ashby Avenue Interchange



10

Route 84 - Pigeon Pass to I-680 & SR84/I-680 Interchange



- Improves regional connectivity
- Improves interregional connectivity
- Relieves congestion
- Improves safety

Project Purpose and Benefits

http://www.alamedactc.org/app_pages/view/18932



11

Route 84 - Pigeon Pass to I-680 & SR84/I-680 Interchange

Stakeholders

FHWA
Caltrans
City of Pleasanton
City of Livermore
Sunol



Challenges and Risks



12

Oakland/Alameda Freeway Access



- Reduce local and regional traffic congestion
- Improve connectivity and safety for bicyclists and pedestrians
- Improve multi-modal mobility
- Reduce barrier effect of I-880 freeway between downtown Oakland/ Chinatown on the east side and Jack London/Alameda on the west

Project Purpose and Benefits

<http://www.alamedactc.org/freewayaccessproject>



13

Oakland/Alameda Freeway Access

Stakeholders

FHWA
 Caltrans
 City of Alameda
 City of Oakland
 Chinatown Coalition
 Chinatown Chamber of Commerce
 Downtown Oakland Chamber of Commerce
 Jack London District Association
 West Alameda Business Association
 Alameda Chamber of Commerce



Challenges and Risks



14

7th Street Grade Separation and Port Arterial Improvements



- **Congestion Relief** - Upgrade technology to improve truck travel and street wait time and Reduce Port area traffic congestion
- **Efficiency Improvements** Improve Port and Rail Yard efficiencies and Promote intermodal yard connectivity and development
- **Sustainability and Economic Stimulation**

Project Purpose and Benefits

<http://www.alamedactc.org/goport>



15

7th Street Grade Separation and Port Arterial Improvements



Stakeholders

Port of Oakland
Caltrans
City of Oakland,
Union Pacific Railroad,
BNSF Railway,
Bay Area Rapid Transit (BART) District
Metropolitan Transportation Commission (MTC)



Challenges and Risks



16

East Bay Greenway: Lake Merritt BART to South Hayward BART



- Improve bicycle and pedestrian network connectivity in communities along the BART line
- Improve access to regional transit, schools, downtown areas and other destinations
- Support promotion of a multimodal transportation system and reduction of greenhouse gas emissions

Project Purpose and Benefits

<http://www.alamedactc.org/eastbaygreenway>



17

East Bay Greenway: Lake Merritt BART to South Hayward BART

Stakeholders

Caltrans
City of Oakland
City of San Leandro
City of Hayward
Alameda County
BART
East Bay Regional Park District



Challenges and Risks



18

Risk Management



PLAN

FUND

DELIVER



19