



I-680 SB Express Lane Monthly Operations September 2015 Update

A Presentation for the
I-680 Sunol Smart Carpool Lane Joint Powers Authority (SSCLJPA)
November 9, 2015




Average Hourly Traffic Volume - During Peak Period

September 2014 & 2015
Year over Year Comparison
(7:00 – 10:00 am, Mon - Fri)

	September 2014	September 2015	2014 vs. 2015
Corridor	6,914 vph	7,277 vph	↑ 5%
HOV/Express Lane	1,019 vph	1,237 vph	↑ 21%
Toll-Paying Users	526 vph	569 vph	↑ 8%

VPH = Vehicles Per Hour

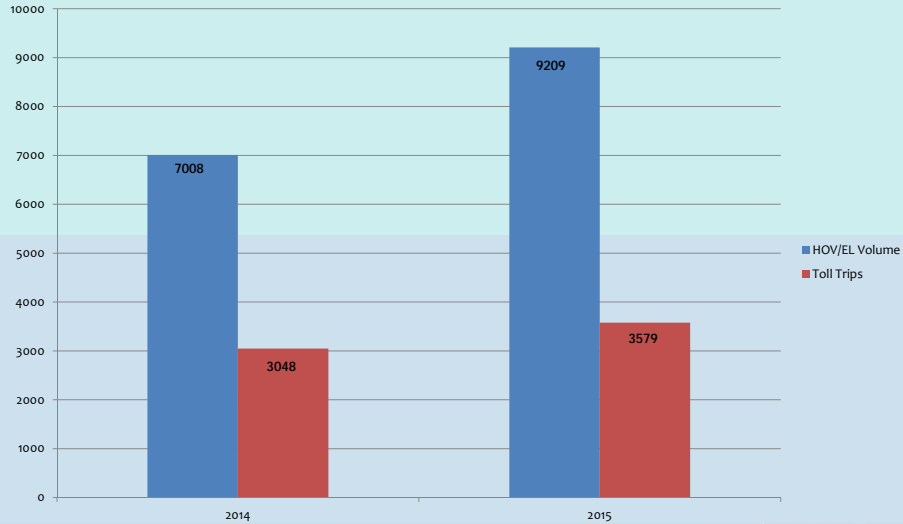
I-680 Sunol SMART Carpool Lane Joint Powers Authority



2

Average Daily HOV/EL Volume vs. Toll Trips

September 2014 & 2015
Year over Year Comparison



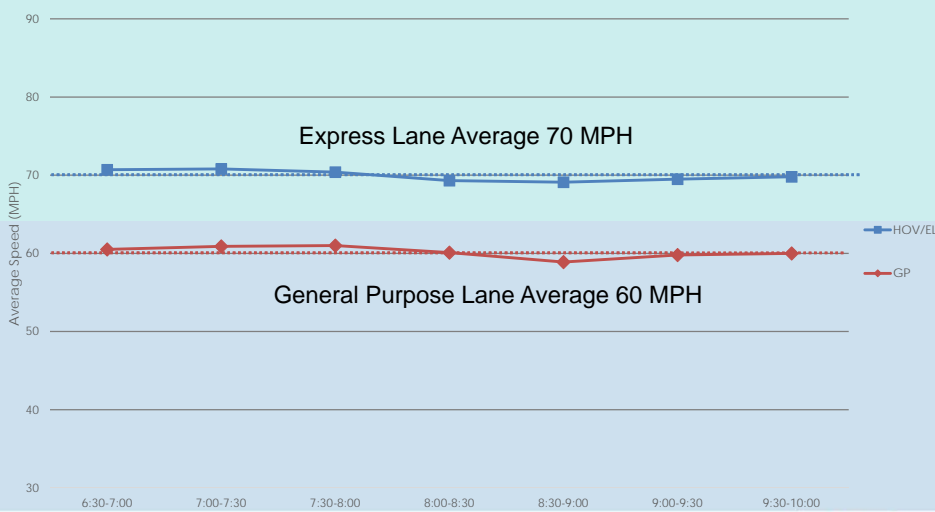
I-680 Sunol SMART Carpool Lane Joint Powers Authority



3

Average Travel Speed - During Peak Period

Throughout the Corridor in September 2015 (7:00 – 10:00am, Mon - Fri)



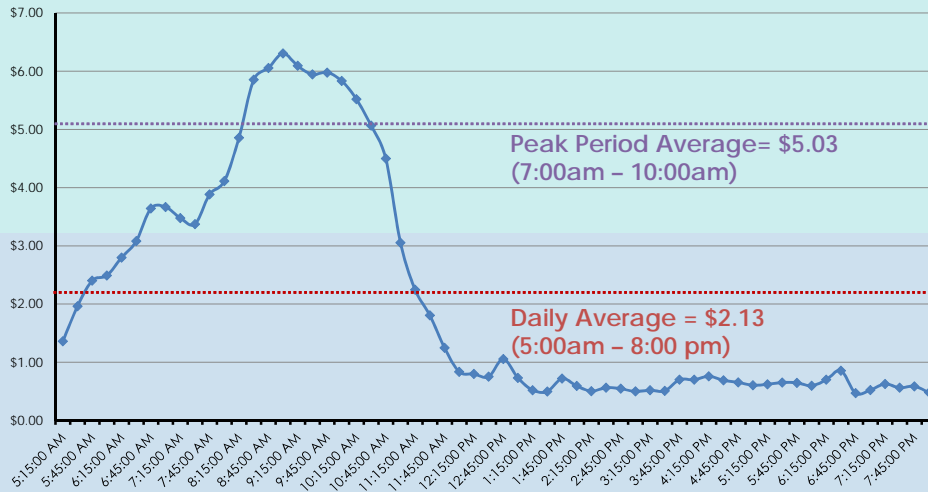
I-680 Sunol SMART Carpool Lane Joint Powers Authority



4

Average Toll Rate - Throughout the Corridor

September 2015 (Mon-Fri)



I-680 Sunol SMART Carpool Lane Joint Powers Authority



5

Most Congested Segment/Hour

In September 2015

Washington Blvd. to South Mission Blvd. / 8:15 – 9:15 a.m. (Mon-Thurs)

Average Hourly;

- Toll Rate = \$6.25
- HOV/EL Volume = 1,250 vph
- Toll Paying Users = 650 vph
- Speed Differential (GP vs. EL)= 15 mph



I-680 Sunol SMART Carpool Lane Joint Powers Authority



6

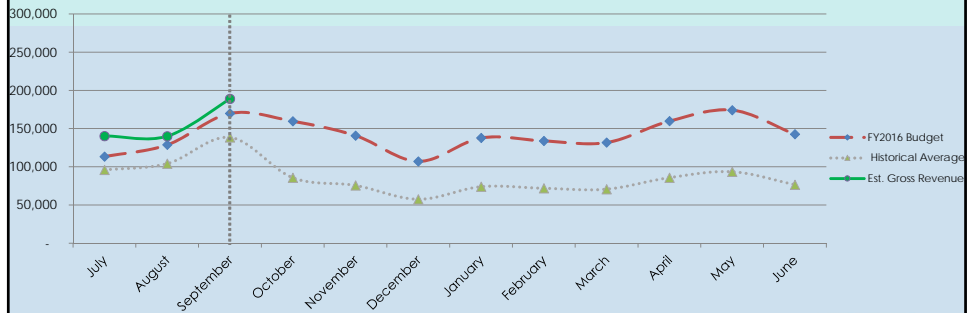
Revenue - Estimated Gross vs. Forecasted

Cumulative Revenue in FY 2015/16
(July - September 2015)

Estimated Gross Revenue **\$469,316** **↑ 14%**

Forecasted* **\$412,119**

* Forecasted revenue for the full FY 15/16 is \$1,700,000



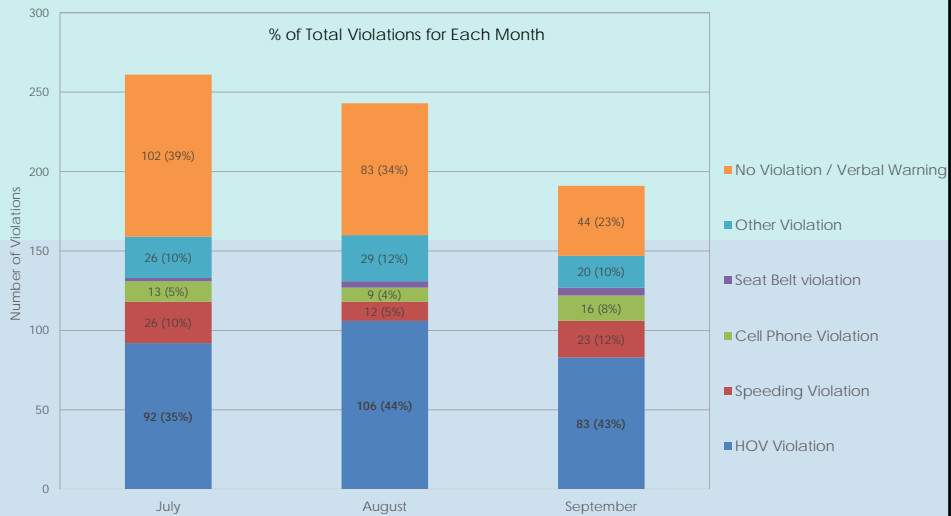
I-680 Sunol SMART Carpool Lane Joint Powers Authority



7

CHP Enforcement Statistics

Q1 FY 15/16 (July - September 2015)



I-680 Sunol SMART Carpool Lane Joint Powers Authority



8



I-680 Sunol SMART Carpool Lane Joint Powers Authority



9